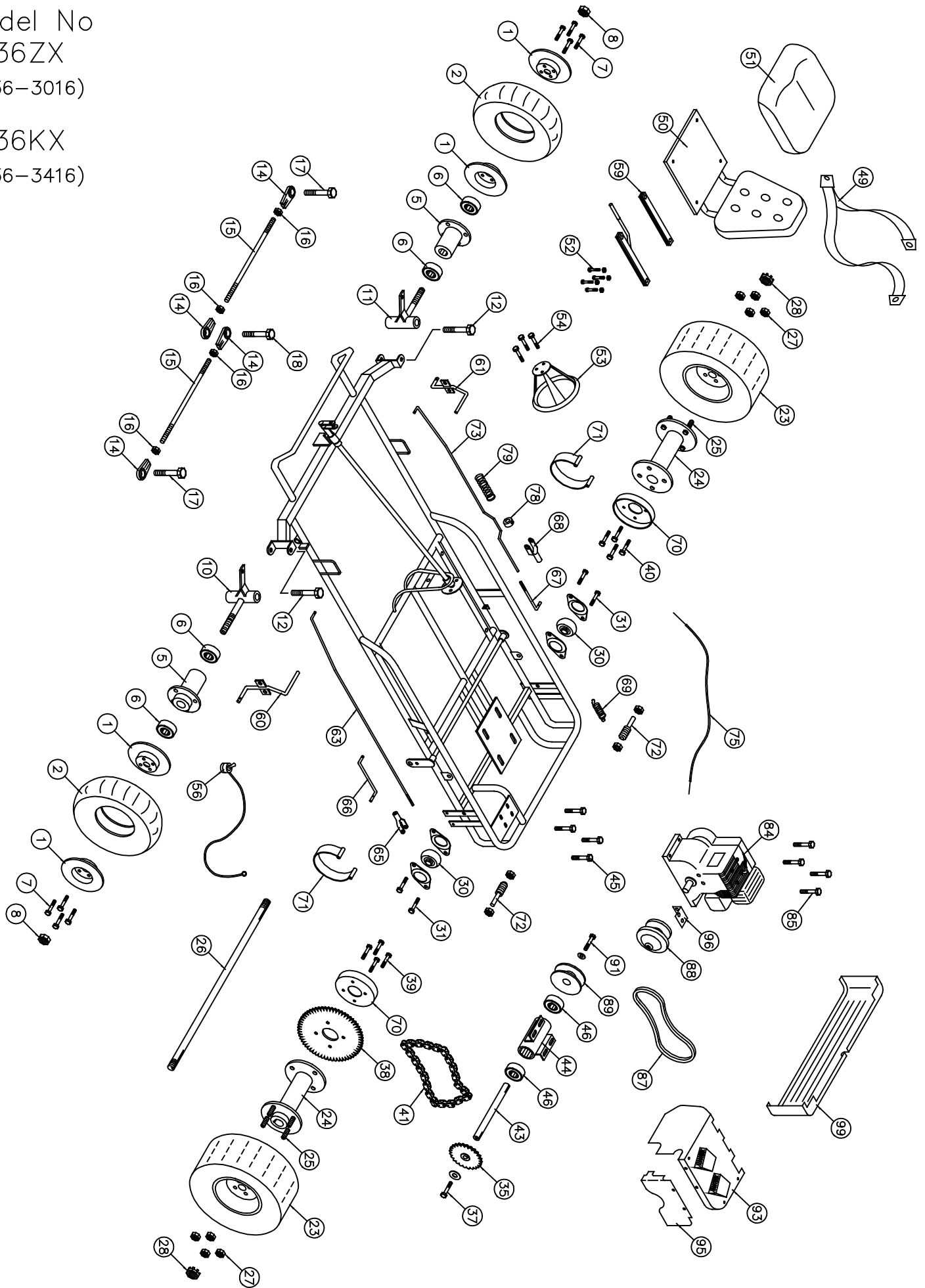


Model No
1736ZX
(1736-3016)

1736KX
(1736-3416)



Go-Kart Item No 1736-3016, 1736-3416

| No. | Partno | Description | Qty | No. | Partno | Description | Qty |
|-----------------------------------|--------|---|-----|--|---------|---|-----|
| <u>Front Wheel Section</u> | | | | <u>Frame Section</u> | | | |
| (1) | G251 | Split rim wheel 6" (Set) | 2 | (49) | G695 | Seat Belt 3-Point | 1 |
| (2) | G276 | Tire & tube assembly (14.5 x 7.00 x 6") | 2 | (50) | G696 | Seat w/ Molded Back | 1 |
| (3) | G277* | Tire (14.5 x 7.00 x 6") | 2 | (51) | G697 | Molded Seat Bottom S/S | 1 |
| (4) | G278* | Tube (14.5 x 7.00 x 6") | 2 | (52) | F810 | Carriage Bolt 5/16" x 3/4" NC w/ LN | 4 |
| (5) | G264 | Steel Flange hub 1 3/8" bore | 2 | (53) | G647 | Steering Wheel 10" (Deep dish) | 1 |
| (6) | G204 | Bearing (1 3/8" OD x 5/8" ID) | 4 | (54) | F924 | Bolt 1/4" x 3/4" w/L.W. & H.Nut | 3 |
| (7) | F908 | Bolt 3/8" x 1 1/4" w/ L.W. & H. Nut | 8 | (55) | I229* | Cable Tie | 1 |
| (8) | F327 | Slotted Hex Nut 5/8" | 2 | (56) | G642 | Toggle Kill Switch w/ wire (48") | 1 |
| (9) | F501* | Cotter Pin 1/8" x 1 1/4" | 2 | (57) | G155* | Flag | 1 |
| (10) | G283 | Spindle (left) | 1 | (58) | G121* | Flag holder | 1 |
| (11) | G284 | Spindle (right) | 1 | (59) | G690 | Seat Adjuster | 1 |
| (12) | F996 | King Pin Bolt (1/2" x 3 3/4" w/ (2)FW & LN) | 2 | <u>Throttle & Brake Section</u> | | | |
| (13) | I215* | Grease Fitting 1/4" (Spindles) | 2 | (60) | G435 | Brake Pedal | 1 |
| (14) | G257 | Tie rod end bearing 3/8" - Heavy Duty | 4 | (61) | G436 | Gas Pedal | 1 |
| (15) | G280 | Tie rod 3/8" x 12 5/8" | 2 | (62) | F504* | Cotter pin 1/8" x 1" | 8 |
| (16) | F309 | Hex nut 3/8" NF | 4 | (63) | G486 | Brake rod #16B | 1 |
| (17) | F949 | Bolt 3/8" x 1 1/4" (w/F.W. & L.Nut) | 2 | (65) | F510 | Clevis pin 5/16" (w/ yoke) | 1 |
| (18) | F948 | Bolt 3/8" x 2" w/(3) F.W. & (1) L.Nut | 1 | (66) | G461 | Brake band rod (left) | 1 |
| <u>Rear Wheel Section</u> | | | | (67) | G462 | Brake band rod (right) | 1 |
| (22) | G781* | Axle Guard | 1 | (68) | F511 | Clevis pin 3/8" (w/ yoke) | 1 |
| (23) | G331 | Tire (18 x 9.50 x 8") Mounted | 2 | (69) | G476 | Spring (short) | 1 |
| (24) | G352 | Drive Hub Cast 1" bore w/ 1/4" keyway | 2 | (70) | G428 | Brake Drum | 2 |
| (25) | F805 | Bolt 1/2" x 1 1/2" (T.A.W.) w/ Lock washer | 8 | (71) | G449 | Brake Band | 2 |
| (26) | G364 | Axle 1" OD x 44" (2 - keyways) | 1 | (72) | F994 | Bolt 5/8" x 3" Stud w/ (2) Nut & (1) L.W. | 2 |
| (27) | F326 | Lock Nut 1/2" | 8 | (73) | G582 | Throttle Rod 11tz | 1 |
| (28) | F312 | Slotted Hex nut 1" | 2 | (75) | G489 | Throttle wire & conduit (37" Wire) | 1 |
| (29) | F507* | Cotter pin (5/32" x 2") | 2 | (76) | G418* | Conduit Clip | 1 |
| (30) | G338 | Flange bearing (1" I.D.) | 2 | (77) | F935* | Bolt 3/16" x 3/4" w/L.W. & H.Nut | 1 |
| (31) | F906 | Bolt 5/16" x 1" w/L.W. & nut | 4 | (78) | F252 | Nyloc Nut | 1 |
| (32) | I110* | Key, Axle 1/4" x 2 1/4" | 2 | (79) | I206 | Spring | 1 |
| (33) | G339* | Bearing Flagettes | 4 | <u>Engine Section</u> | | | |
| <u>Jack Shaft Section</u> | | | | (84) | E138 | Tecumseh 6HP Engine w/Alt | 1 |
| (35) | G501 | Sprocket 12T(40B) (3/4" bore) | 1 | (85) | F970 | Bolt 5/16" x 1 3/4" w/ Flange Nut | 4 |
| (36) | I113* | Key 3/16" x 7/8" | 1 | (86) | G756* | Series 20 Torque Converter Comp. | 1 |
| (37) | F967 | Bolt 5/16" x 1" w/F.W. & L.W. | 1 | (87) | G759 | Series 20 Belt | 1 |
| (38) | G541 | Sprocket 54T(41A) | 1 | (88) | G757 | Series 20 Driver unit | 1 |
| (39) | F954 | Bolt 3/8" x 1 1/4" w/ L.W. | 4 | (89) | G758 | Series 20 Driven unit | 1 |
| (40) | F947 | Bolt 3/8" x 1" w/ Lock washer | 4 | (90) | F961* | Bolt 5/16" x 1 1/4" NF w/ FW. & L.W. | 1 |
| (41) | G567 | Drive chain #40-62 Pitches | 1 | (91) | F967 | Bolt 5/16" x 1" w/ L.W. & F.W. | 1 |
| (42) | G514* | Connector link #40 | 1 | (92) | I114* | Key 3/16" x 2" | 1 |
| (43) | G548 | Jack Shaft (3/4" x 11 11/16") | 1 | (93) | 3371108 | Clutch Cover | 1 |
| (44) | G549 | Jack Shaft Housing (1 5/8" x 8 1/2") | 1 | (94) | F111* | Bolt 5/16" x 3/4" NF | 2 |
| (45) | F951 | Bolt 5/16" x 1" w/Flange Nut | 4 | (95) | 3371122 | Sprocket Cover | 1 |
| (46) | G903 | Bearing (1 5/8" OD x 3/4" ID) | 2 | (96) | G778 | Guard Bracket | 1 |
| | | | | (97) | F808* | Bolt 3/16" x 1/2" w/10-24 Speed Nut | 2 |
| | | | | (98) | G107* | Light Kit | 1 |
| | | | | (99) | 3371134 | Bumper Guard | 1 |

* Not Shown on Drawing