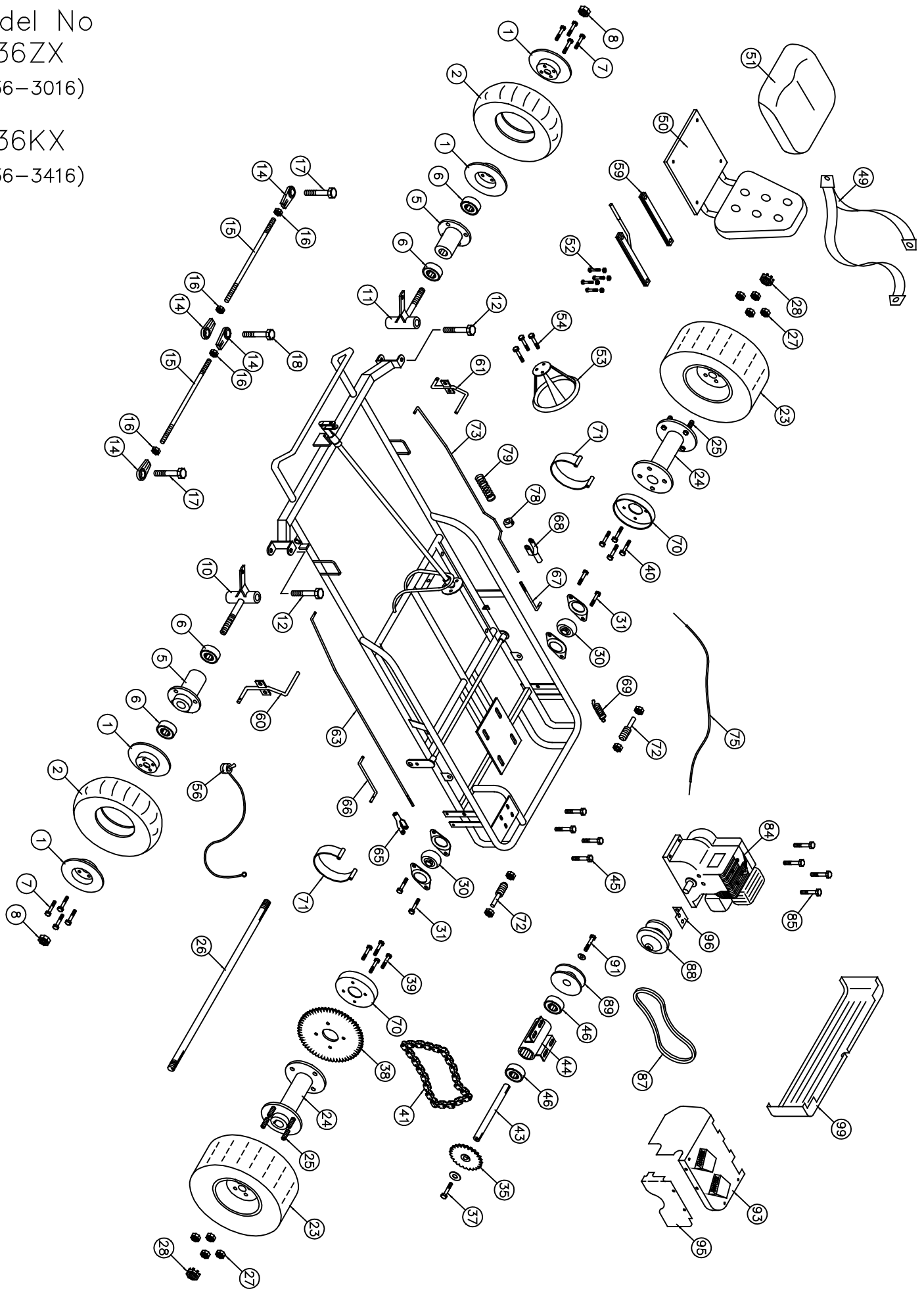


Model No
1736ZX
(1736-3016)

1736KX
(1736-3416)



Go-Kart Item No 1736-3016, 1736-3416

No.	Partno	Description	Qty	No.	Partno	Description	Qty
<u>Front Wheel Section</u>				<u>Frame Section</u>			
(1)	G251	Split rim wheel 6" (Set)	2	(49)	G695	Seat Belt 3-Point	1
(2)	G276	Tire & tube assembly (14.5 x 7.00 x 6")	2	(50)	G696	Seat w/ Molded Back	1
(3)	G277*	Tire (14.5 x 7.00 x 6")	2	(51)	G697	Molded Seat Bottom S/S	1
(4)	G278*	Tube (14.5 x 7.00 x 6")	2	(52)	F810	Carriage Bolt 5/16" x 3/4" NC w/ LN	4
(5)	G264	Steel Flange hub 1 3/8" bore	2	(53)	G647	Steering Wheel 10" (Deep dish)	1
(6)	G204	Bearing (1 3/8" OD x 5/8" ID)	4	(54)	F924	Bolt 1/4" x 3/4" w/L.W. & H.Nut	3
(7)	F908	Bolt 3/8" x 1 1/4" w/ L.W. & H. Nut	8	(55)	I229*	Cable Tie	1
(8)	F327	Slotted Hex Nut 5/8"	2	(56)	G642	Toggle Kill Switch w/ wire (48")	1
(9)	F501*	Cotter Pin 1/8" x 1 1/4"	2	(57)	G155*	Flag	1
(10)	G283	Spindle (left)	1	(58)	G121*	Flag holder	1
(11)	G284	Spindle (right)	1	(59)	G690	Seat Adjuster	1
(12)	F996	King Pin Bolt (1/2" x 3 3/4" w/ (2)FW & LN)	2	<u>Throttle & Brake Section</u>			
(13)	I215*	Grease Fitting 1/4" (Spindles)	2	(60)	G435	Brake Pedal	1
(14)	G257	Tie rod end bearing 3/8" - Heavy Duty	4	(61)	G436	Gas Pedal	1
(15)	G280	Tie rod 3/8" x 12 5/8"	2	(62)	F504*	Cotter pin 1/8" x 1"	8
(16)	F309	Hex nut 3/8" NF	4	(63)	G486	Brake rod #16B	1
(17)	F949	Bolt 3/8" x 1 1/4" (w/F.W. & L.Nut)	2	(65)	F510	Clevis pin 5/16" (w/ yoke)	1
(18)	F948	Bolt 3/8" x 2" w/(3) F.W. & (1) L.Nut	1	(66)	G461	Brake band rod (left)	1
<u>Rear Wheel Section</u>				(67)	G462	Brake band rod (right)	1
(22)	G781*	Axle Guard	1	(68)	F511	Clevis pin 3/8" (w/ yoke)	1
(23)	G331	Tire (18 x 9.50 x 8") Mounted	2	(69)	G476	Spring (short)	1
(24)	G352	Drive Hub Cast 1" bore w/ 1/4" keyway	2	(70)	G428	Brake Drum	2
(25)	F805	Bolt 1/2" x 1 1/2" (T.A.W.) w/ Lock washer	8	(71)	G449	Brake Band	2
(26)	G364	Axle 1" OD x 44" (2 - keyways)	1	(72)	F994	Bolt 5/8" x 3" Stud w/ (2) Nut & (1) L.W.	2
(27)	F326	Lock Nut 1/2"	8	(73)	G582	Throttle Rod 11tz	1
(28)	F312	Slotted Hex nut 1"	2	(75)	G489	Throttle wire & conduit (37" Wire)	1
(29)	F507*	Cotter pin (5/32" x 2")	2	(76)	G418*	Conduit Clip	1
(30)	G338	Flange bearing (1" I.D.)	2	(77)	F935*	Bolt 3/16" x 3/4" w/L.W. & H.Nut	1
(31)	F906	Bolt 5/16" x 1" w/L.W. & nut	4	(78)	F252	Nyloc Nut	1
(32)	I110*	Key, Axle 1/4" x 2 1/4"	2	(79)	I206	Spring	1
(33)	G339*	Bearing Flagettes	4	<u>Engine Section</u>			
<u>Jack Shaft Section</u>				(84)	E138	Tecumseh 6HP Engine w/Alt	1
(35)	G501	Sprocket 12T(40B) (3/4" bore)	1	(85)	F970	Bolt 5/16" x 1 3/4" w/ Flange Nut	4
(36)	I113*	Key 3/16" x 7/8"	1	(86)	G756*	Series 20 Torque Converter Comp.	1
(37)	F967	Bolt 5/16" x 1" w/F.W. & L.W.	1	(87)	G759	Series 20 Belt	1
(38)	G541	Sprocket 54T(41A)	1	(88)	G757	Series 20 Driver unit	1
(39)	F954	Bolt 3/8" x 1 1/4" w/ L.W.	4	(89)	G758	Series 20 Driven unit	1
(40)	F947	Bolt 3/8" x 1" w/ Lock washer	4	(90)	F961*	Bolt 5/16" x 1 1/4" NF w/ FW. & L.W.	1
(41)	G567	Drive chain #40-62 Pitches	1	(91)	F967	Bolt 5/16" x 1" w/ L.W. & F.W.	1
(42)	G514*	Connector link #40	1	(92)	I114*	Key 3/16" x 2"	1
(43)	G548	Jack Shaft (3/4" x 11 11/16")	1	(93)	3371108	Clutch Cover	1
(44)	G549	Jack Shaft Housing (1 5/8" x 8 1/2")	1	(94)	F111*	Bolt 5/16" x 3/4" NF	2
(45)	F951	Bolt 5/16" x 1" w/Flange Nut	4	(95)	3371122	Sprocket Cover	1
(46)	G903	Bearing (1 5/8" OD x 3/4" ID)	2	(96)	G778	Guard Bracket	1
				(97)	F808*	Bolt 3/16" x 1/2" w/10-24 Speed Nut	2
				(98)	G107*	Light Kit	1
				(99)	3371134	Bumper Guard	1

* Not Shown on Drawing

Carter Brothers Mfg. Co., Inc. Route 1, Box 42 Brundidge, AL 36010-9148
 Tele: (334) 735-2301 Fax: (334) 735-3500

07/23/01