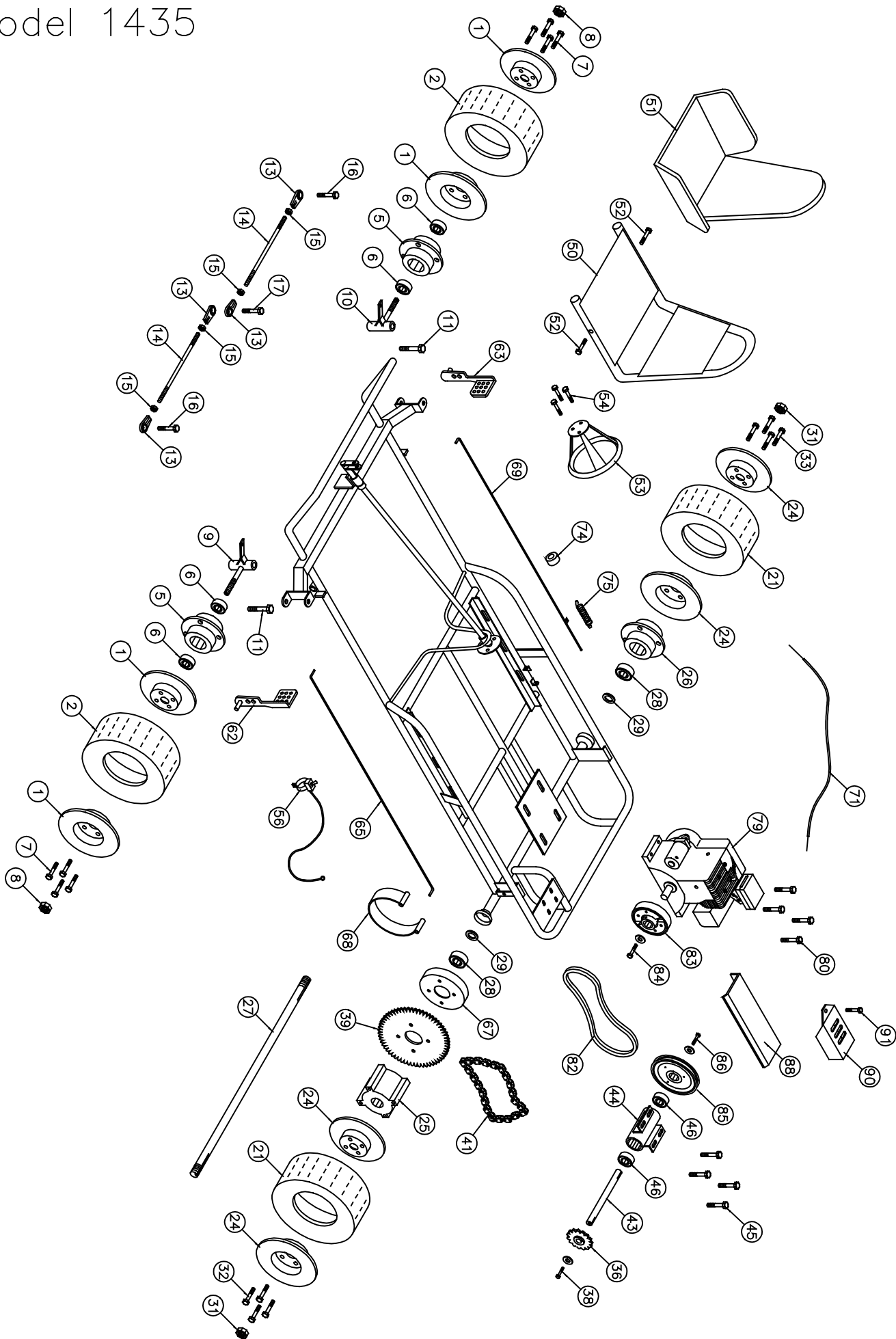


Model 1435



Hot Bodies®

Go-Kart Parts List - Model 1435

No	Partno	Description	Qty	No	Partno	Description	Qty
Front Wheel Section				(46)	G903	Bearing (1 5/8" OD x 3/4" ID)	2
(1)	G251	Split rim wheel 6" (Set)	2	Frame Section			
(2)	G276	Tire & Tube Assembly (14.5 x 7.00 x 6")	2	(49)	G689*	Seat Belt	1
(3)	G277*	Tire (14.5 x 7.00 x 6")	2	(50)	G686	Metal Seat	1
(4)	G278*	Tube (14.5 x 7.00 x 6")	2	(51)	G656	Cushion seat #4	1
(5)	G216	Flange hub 1 3/8" bore	2	(52)	F958	Bolt 5/16" x 1 1/2" w/ F.W., L.W. & H.Nut	2
(6)	G204	Bearing (1 3/8" OD x 5/8" ID)	4	(53)	G647	Steering Wheel 10" (Deep Dish)	1
(7)	F962	Bolt 3/8" x 3/4" w/Lock washer	8	(54)	F924	Bolt 1/4" x 3/4" w/L.W. & H.Nut	3
(8)	F328	Lock nut 5/8"	2	(55)	I229*	Cable tie	1
(9)	G227	Spindle (left)	1	(56)	G642	Toggle Kill Switch w/ wire (48")	1
(10)	G228	Spindle (right)	1	(57)	G101*	Flag	1
(11)	F996	King pin bolt (1/2" x 3 3/4" w/(2)FW & LN)	2	(58)	G121*	Flag holder	1
(12)	I215*	Grease fitting 1/4" (Spindles)	2	(59)	G690*	Seat Adjuster	1
(13)	G207	Tie rod bearing 3/8"	4	Throttle & Brake Section			
(14)	G236	Tie rod 3/8" x 11 3/8"	2	(62)	G433	Brake pedal	1
(15)	F309	Nut 3/8" NF	4	(63)	G434	Gas pedal	1
(16)	F949	Bolt 3/8" x 1 1/4" w/F.W. & L.Nut	2	(64)	F504*	Cotter Pin 1/8" x 1"	4
(17)	F948	Bolt 3/8" x 2" w/(3)F.W. & (1)L.Nut	1	(65)	G410	Brake rod #27B	1
Rear Wheel Section				(67)	G428	Brake drum	1
(21)	G276	Tire & Tube Assembly (14.5 x 7.00 x 6")	2	(68)	G449	Brake band	1
(22)	G277*	Tire (14.5 x 7.00 x 6")	2	(69)	G582	Throttle rod #11T-Z	1
(23)	G278*	Tube (14.5 x 7.00 x 6")	2	(71)	G489	Throttle Wire & conduit (37" Wire)	1
(24)	G251	Split rim wheel 6" (Set)	2	(72)	G418*	Conduit clip	1
(25)	G308	Drive hub 3/4" bore	1	(73)	F935*	Bolt 3/16" x 3/4" w/L.W. & H.Nut	1
(26)	G310	Flange hub 3/4" bore	1	(74)	F252	Nyloc Nut	1
(27)	G314	Axle 3/4" x 38 1/4"	1	(75)	I206	Spring	1
(28)	G903	Bearing (1 5/8" OD x 3/4" ID)	2	Engine Section			
(29)	G237	Wear Ring 3/4"	2	(79)	E104	Briggs & Stratton 5 hp Engine (136212)	1
(30)	I112*	Key 3/16" x 2 3/4"	2	(80)	F970	Bolt 5/16" x 1 3/4" w/Flange Nut	4
(31)	F330	Lock nut 3/4"	2	(82)	G755	V-Belt (5L 300)	1
(32)	F947	Bolt 3/8" x 1" w/Lock washer	4	(83)	G704	Centrifugal Belt Clutch	1
(33)	F962	Bolt 3/8" x 3/4" w/Lock washer	4	(84)	F111	Bolt 5/16" x 3/4"	2
Jack Shaft Section				(85)	G566	Pulley (B) 5 3/4" w/ 3/4" Bore	1
(36)	G501	Sprocket 12T (40B)	1	(86)	F967	Bolt 5/16" x 1" w/ L.W.& F.W.	1
(37)	I113*	Key 3/16" x 7/8"	1	(87)	I104*	Key 3/16" x 1 1/2"	1
(38)	F967	Bolt 5/16" x 1" w/F.W. & L.W.	1	(88)	G737	Belt Guard	1
(39)	G541	Sprocket 54T (41A)	1	(89)	G778*	Belt Guard Bracket	1
(40)	F954*	Bolt 3/8" x 1 1/4" w/Lock washer	4	(90)	G762	Muffler Guard	1
(41)	G567	Drive Chain #40-62 Pitches	1	(91)	F902	Bolt 1/4" x 1/2" w/ L.W.	1
(42)	G514*	Connector Link #40	1	(92)	F961*	Bolt 5/16" x 1 1/4" w/ FW & LW	1
(43)	G529	Jack shaft (3/4" X 12 5/16")	1	(93)	G533*	Spacer 1/4"	1
(44)	G531	Jack Shaft Housing (1 5/8" x 9 1/8")	1	(94)	F808*	Screw 3/16" x 1/2" w/10-24 Speed Nut	2
(45)	F951	Bolt 5/16" x 1"	4				

* Not Shown on Drawing

Carter Brothers Mfg. Co., Inc. Route 1, Box 42 Brundidge, AL 36010-9148
 Tele: (334) 735-2301 Fax: (334) 735-3500

06/07/01