

# Illustrated Parts List

## Model Series

### 93400 to 93499

#### TYPE NUMBERS

0010, 0011, 0015,  
0024,  
0035 through 0041,  
0049, 0060,  
0136 through 0141,  
0144 through 0155,  
0157, 0158, 0168,  
0169, 0172, 0174,  
0315 through 0360,  
0636, 0654, 0669,  
1015,  
1035 through 1060,  
1236 through 1278.

#### TO FIND

#### THE CORRECT NUMBER OF THE PART YOU NEED: FOLLOW THE INSTRUCTIONS BELOW

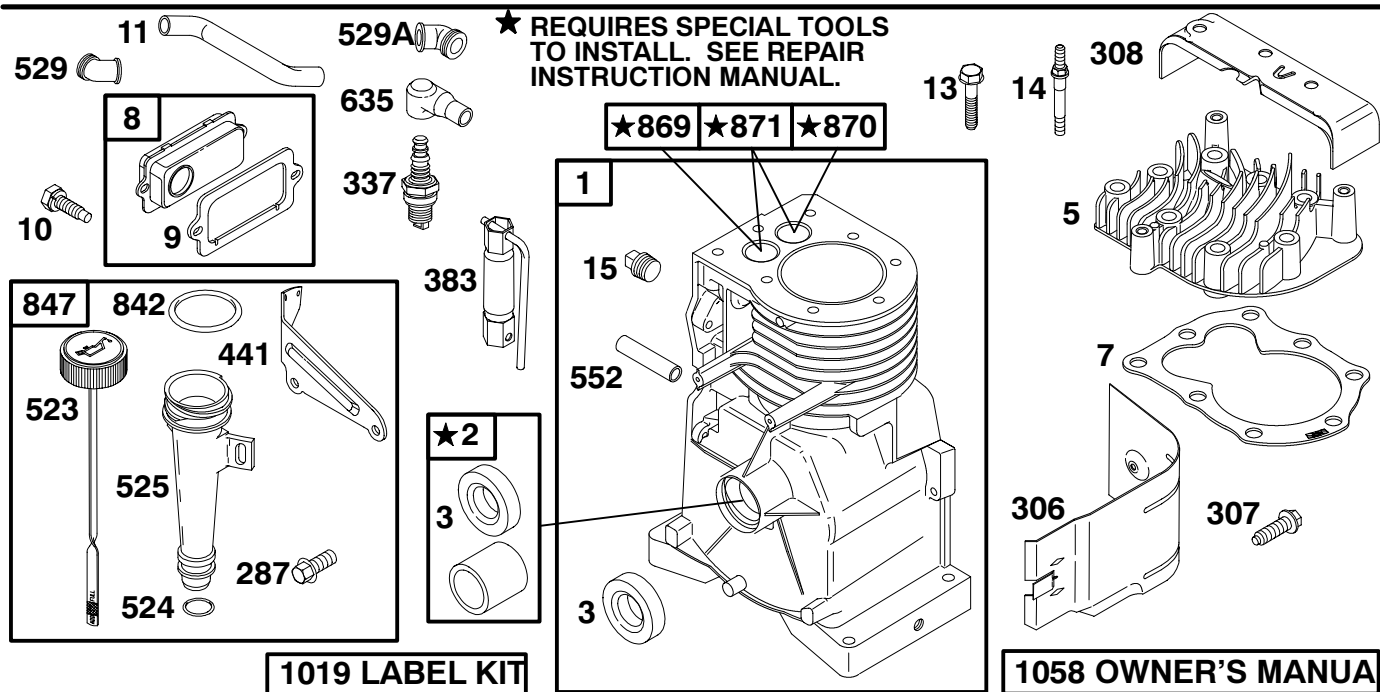
- A. Refer to Engine Model, Type and Code Number that is stamped on the blower housing of engine. Engine type numbers such as 0123 01 are listed only as 0123 in most instances. The two digits (01 or 02, etc.) to the right of the space may be required for more accurate parts identification in some instances. Select the Illustrated Parts List covering the correct Model Series and Type Number.
- B. Refer to the Illustrations and compare the original part with Illustration. The number next to the illustration is the Reference Number. Assemblies include all parts shown in frames. All parts shown in assembly frames having individual reference numbers can be purchased separately.
- C. After the Reference Number has been identified, refer to the Numerical text, where Reference and Primary Part Number are listed. **THE PRIMARY PART IS USED ON ALL TYPE NUMBERS EXCEPT THOSE TYPE NUMBERS UNDER "NOTE."**
- D. If a "Note" appears below the Primary Part Number, it means that this part differs from the Primary Part for certain types. If your Type number is listed under "Note," order the part referred to at the "Note."
- E. If your Engine Type Number does not appear after any part number listed under "Note," use the Primary Part Number.
- F. For Engine Type Numbers not covered by this book, check other Parts Lists having the same engine model or contact your source of supply.

PRINTED IN U.S.A.



COPYRIGHT by BRIGGS & STRATTON CORPORATION  
All rights reserved. No part of this material may be reproduced or transmitted, in any form or by any means, electronic or mechanical, including photocopying, recording or by any information storage and retrieval system, without permission in writing from Briggs & Stratton Corporation.

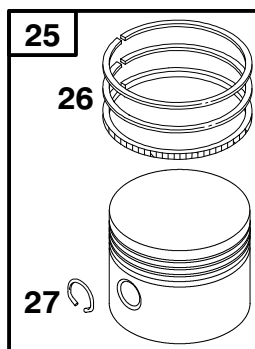
# 93400 to 93499



REF. NO.	PART NO.	DESCRIPTION	REF. NO.	PART NO.	DESCRIPTION	REF. NO.	PART NO.	DESCRIPTION
1	695165	Cylinder Assembly (Used After Code Date 99103100). ----- Note ----- 496864 Cylinder Assembly (Used Before Code Date 99110100).	287	94929	Screw (Dipstick Tube) (Used After Code Date 94041700). ----- Note ----- 691693 Screw (Dipstick Tube) (Used Before Code Date 94041800).	529	66578	Tube-Dipstick (Used Before Code Date 99031500).
2	399269	Kit-Bushing/Seal (Magneto Side)	306	690461	Shield-Cylinder	529A	67838	Grommet
3	★299819	Seal-Oil (Magneto Side)	307	94680	Screw (Cylinder Shield)	552	690508	Grommet
5	690384	Head-Cylinder ----- Note ----- 690386 Head-Cylinder Used On Type No(s). 0136, 0636, 1236.	308	690462	Cover-Cylinder Head	552	690508	Bushing-Governor Crank
7 ★	272694	Gasket-Cylinder Head	337	496018	Sparkplug ----- Note ----- 802592 Sparkplug Used On Type No(s). 0136, 0636.	635	66538	Boot-Sparkplug
8	495774	Breather Assembly	383	89838	Wrench-Sparkplug	842	★270920	Seal-Dipstick/Tube
9 ★	27549	Gasket-Breather	441	690484	Bracket-Oil Fill	847	690848	Dipstick/Tube Assembly
10	691666	Screw (Breather Assembly)	523	495264	Dipstick (Used After Code Date 99031400). ----- Note ----- 691395 Dipstick (Used Before Code Date 99150300).	869	211172	Seat-Valve (Intake)
11	691246	Tube-Breather	524	★271485	Seal-Dipstick Tube	870	211291	Seat-Valve (Exhaust)
13	94960	Screw (Cylinder Head)	525	694426	Tube-Dipstick (Used After Code Date 99031400). ----- Note -----	871	262001	Bushing-Valve Guide
14	690361	Stud (Cylinder Head Used in Positions 6 & 8)				1019	496905	Kit-Label
15	94916	Plug-Oil Drain				1058	274261	Owner's Manual (Emissions Engines) ----- Note ----- 273124 Owner's Manual (Emissions Engines) Used On Type No(s). 0315, 0335, 0336, 0337, 0338, 0339, 0349, 0360, 0636, 0654, 0669. 272663 Owner's Manual (Non Emissions Engines)

★ Included in Engine Gasket Set-Ref. No. 358.  
● Included in Carburetor Overhaul Kit-Ref. No. 121.

◆ Included in Carburetor Gasket Set-Ref. No. 977.  
Included in Valve Gasket Set-Ref. No. 1095.

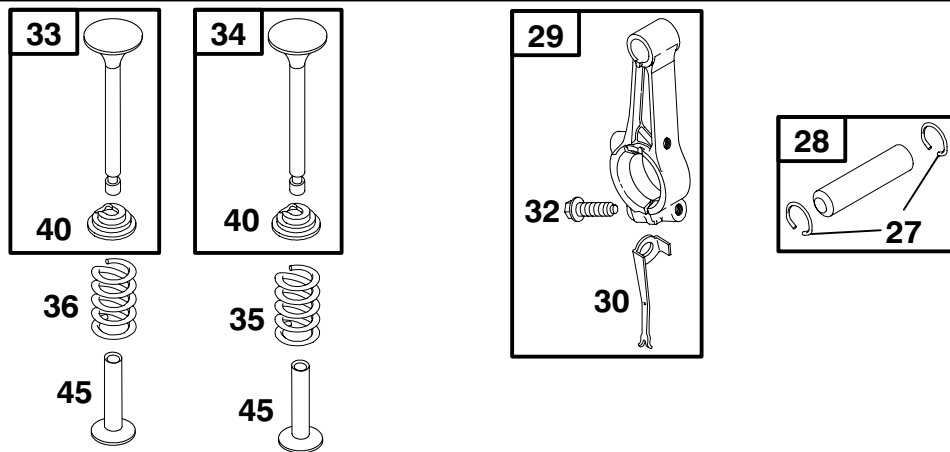


REF. NO.	PART NO.	DESCRIPTION	REF. NO.	PART NO.	DESCRIPTION	REF. NO.	PART NO.	DESCRIPTION
25	695636	Piston Assembly (Standard) (Used After Code Date 99103100). ----- <b>Note</b> ----- <b>498676</b> Piston Assembly (Standard) (Used After Code Date 96012800 and Before Code Date 99110100). <b>496869</b> Piston Assembly (Standard) (Used Before Code Date 96012900).  <b>695637</b> Piston Assembly (.010 O.S.) (Used After Code Date 99103100). <b>498677</b> Piston Assembly (.010 O.S.) (Used After Code Date 96012800 and Before Code Date 99110100). <b>393820</b> Piston Assembly (.010 O.S.) (Used Before Code Date 96012900).  <b>695638</b> Piston Assembly (.020 O.S.) (Used After Code Date 99103100).			<b>498678</b> Piston Assembly (.020 O.S.) (Used After Code Date 96012800 and Before Code Date 99110100). <b>393821</b> Piston Assembly (.020 O.S.) (Used Before Code Date 96012900).  <b>695639</b> Piston Assembly (.030 O.S.) (Used After Code Date 99103100). <b>498679</b> Piston Assembly (.030 O.S.) (Used After Code Date 96012800 and Before Code Date 99110100). <b>393822</b> Piston Assembly (.030 O.S.) (Used Before Code Date 96012900).  <b>26</b> <b>695169</b> Ring Set (Standard) (Used After Code Date 99103100). ----- <b>Note</b> ----- <b>498680</b> Ring Set (Standard) (Used After Code Date 96012800 and Before Code Date 99110100). <b>399067</b> Ring Set (Standard) (Used Before Code Date 96012900).			<b>695171</b> Ring Set (.010 O.S.) (Used After Code Date 99103100). <b>498681</b> Ring Set (.010 O.S.) (Used After Code Date 96012800 and Before Code Date 99110100). <b>399014</b> Ring Set (.010 O.S.) (Used Before Code Date 96012900).  <b>695172</b> Ring Set (.020 O.S.) (Used After Code Date 99103100). <b>498682</b> Ring Set (.020 O.S.) (Used After Code Date 96012800 and Before Code Date 99110100). <b>399015</b> Ring Set (.020 O.S.) (Used Before Code Date 96012900).  <b>695173</b> Ring Set (.030 O.S.) (Used After Code Date 99103100). <b>498683</b> Ring Set (.030 O.S.) (Used After Code Date 96012800 and Before Code Date 99110100). <b>399016</b> Ring Set (.030 O.S.) (Used Before Code Date 96012900).  <b>27</b> <b>26026</b> Piston Pin Lock

★ Included in Engine Gasket Set-Ref. No. 358.  
● Included in Carburetor Overhaul Kit-Ref. No. 121.

◆ Included in Carburetor Gasket Set-Ref. No. 977.  
Included in Valve Gasket Set-Ref. No. 1095.

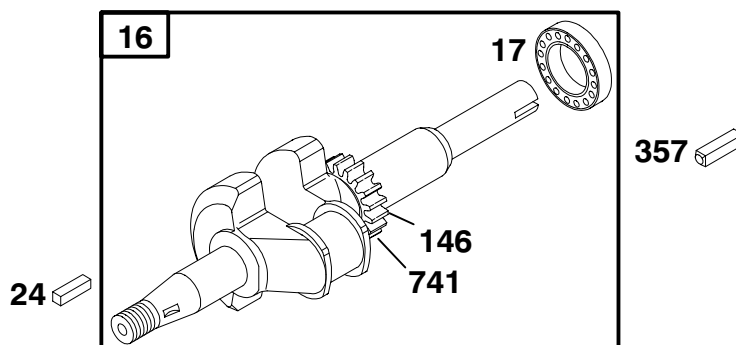
# 93400 to 93499



REF. NO.	PART NO.	DESCRIPTION	REF. NO.	PART NO.	DESCRIPTION	REF. NO.	PART NO.	DESCRIPTION
27	26026	Piston Pin Lock	30	220670	Dipper-Connecting Rod	35	260552	Spring-Valve (Intake)
28	298909	Piston Pin (Standard)	32	94699	Screw (Connecting Rod)	36	260552	Spring-Valve (Exhaust)
		----- <b>Note</b> -----	33	497871	Valve-Exhaust	40	93312	Retainer-Valve
		298908 Piston Pin (.005 O.S.)	34	296677	Valve-Intake	45	230173	Tappet-Valve
29	294367	Connecting Rod						
		----- <b>Note</b> -----						
		296079 Connecting Rod (.020 Undersize)						

- ★ Included in Engine Gasket Set-Ref. No. 358.
- Included in Carburetor Overhaul Kit-Ref. No. 121.

- ◆ Included in Carburetor Gasket Set-Ref. No. 977.
- ◆ Included in Valve Gasket Set-Ref. No. 1095.

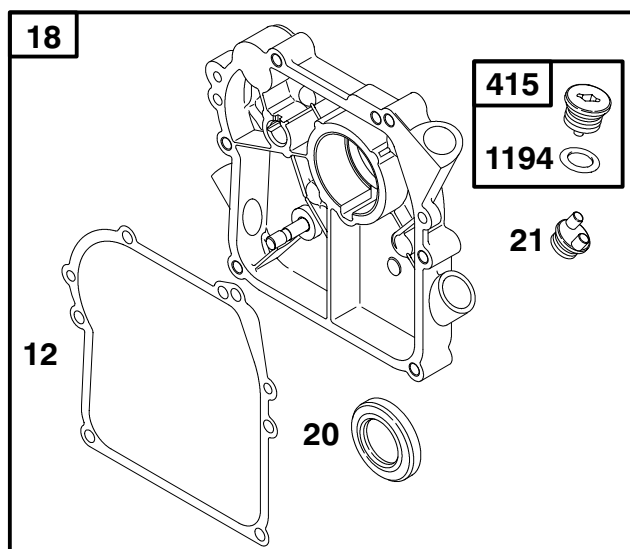


REF. NO.	PART NO.	DESCRIPTION	REF. NO.	PART NO.	DESCRIPTION	REF. NO.	PART NO.	DESCRIPTION
16	399006	Crankshaft ----- <b>Note</b> ----- <b>492086</b> Crankshaft Used On Type No(s). 0060, 0360. <b>492095</b> Crankshaft Used on Type No(s). 0035, 0149, 0335. <b>492880</b> Crankshaft Used on Type No(s). 0015, 0315, 1015. <b>493599</b> Crankshaft Used on Type No(s). 0024, 0049, 0141, 0168, 0349. <b>493632</b> Crankshaft Used on Type No(s). 0011, 0150, 0169, 0172, 0669, 1269, 1278. <b>690821</b> Crankshaft Used On Type No(s). 0036, 0137, 0140, 0145, 0336. <b>690836</b> Crankshaft Used On Type No(s). 0041, 0158, 1258.			<b>497232</b> Crankshaft Used On Type No(s). 0037, 0144, 0154, 0654, 0337. <b>691474</b> Crankshaft Used On Type No(s). 1254. <b>690673</b> Crankshaft Used On Type No(s). 1049, 1241, 1277. <b>691475</b> Crankshaft Used On Type No(s). 1060. <b>691488</b> Crankshaft Used On Type No(s). 1037. <b>692145</b> Crankshaft Used On Type No(s). 1038, 1257. <b>691489</b> Crankshaft Used On Type No(s). 1035. <b>692146</b> Crankshaft Used On Type No(s). 1036, 1240.			<b>17</b> <b>690824</b> Bearing-Ball <b>24</b> <b>222698</b> Key-Flywheel <b>146</b> <b>230978</b> Key-Timing <b>357</b> <b>91539</b> Key-Drive Pulley Used On Type No(s). 0140. <b>741</b> <b>261533</b> Gear-Timing

★ Included in Engine Gasket Set-Ref. No. 358.  
● Included in Carburetor Overhaul Kit-Ref. No. 121.

◆ Included in Carburetor Gasket Set-Ref. No. 977.  
Included in Valve Gasket Set-Ref. No. 1095.

# 93400 to 93499

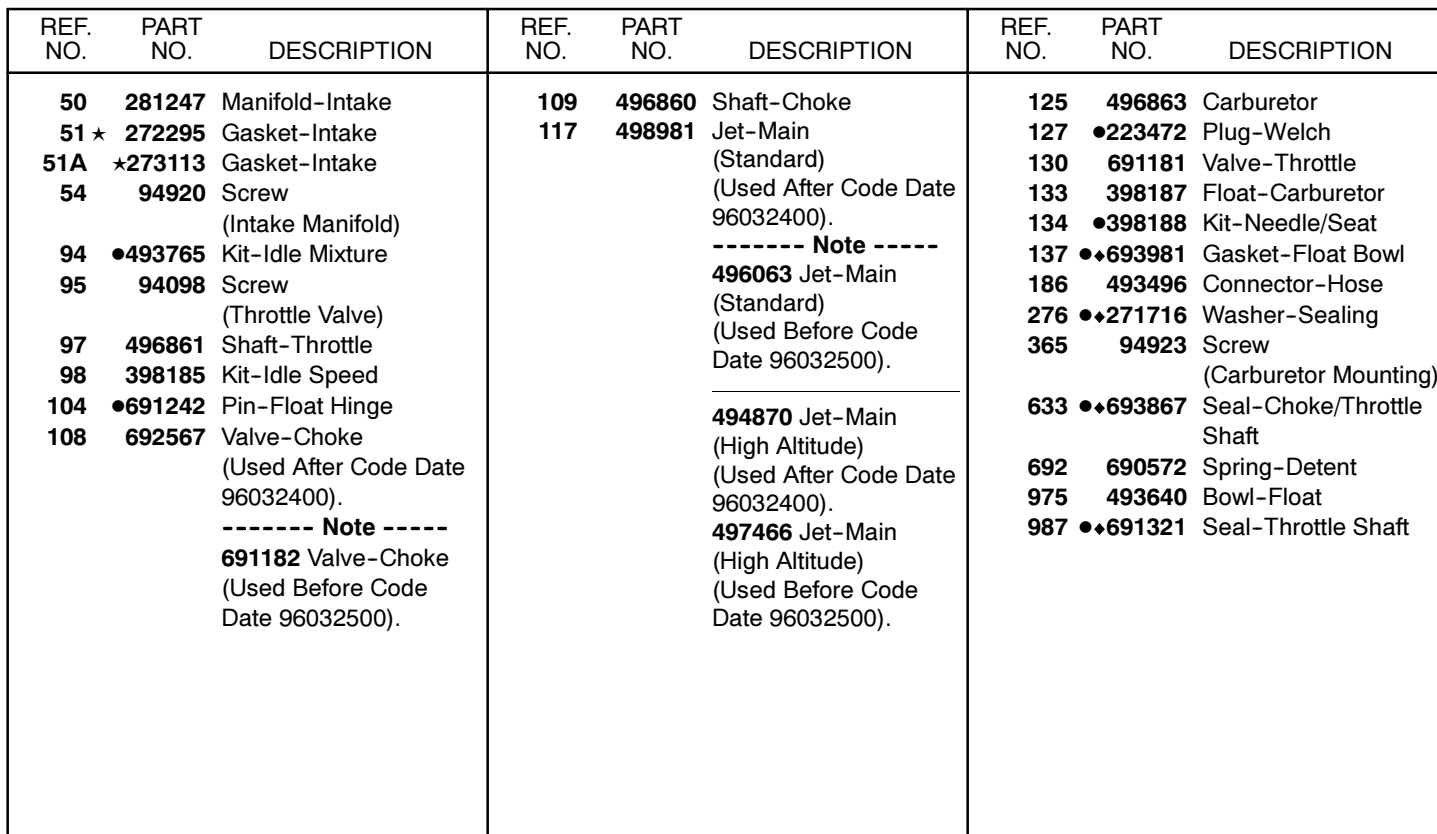


★ **REQUIRES SPECIAL TOOLS TO INSTALL. SEE REPAIR INSTRUCTION MANUAL.**

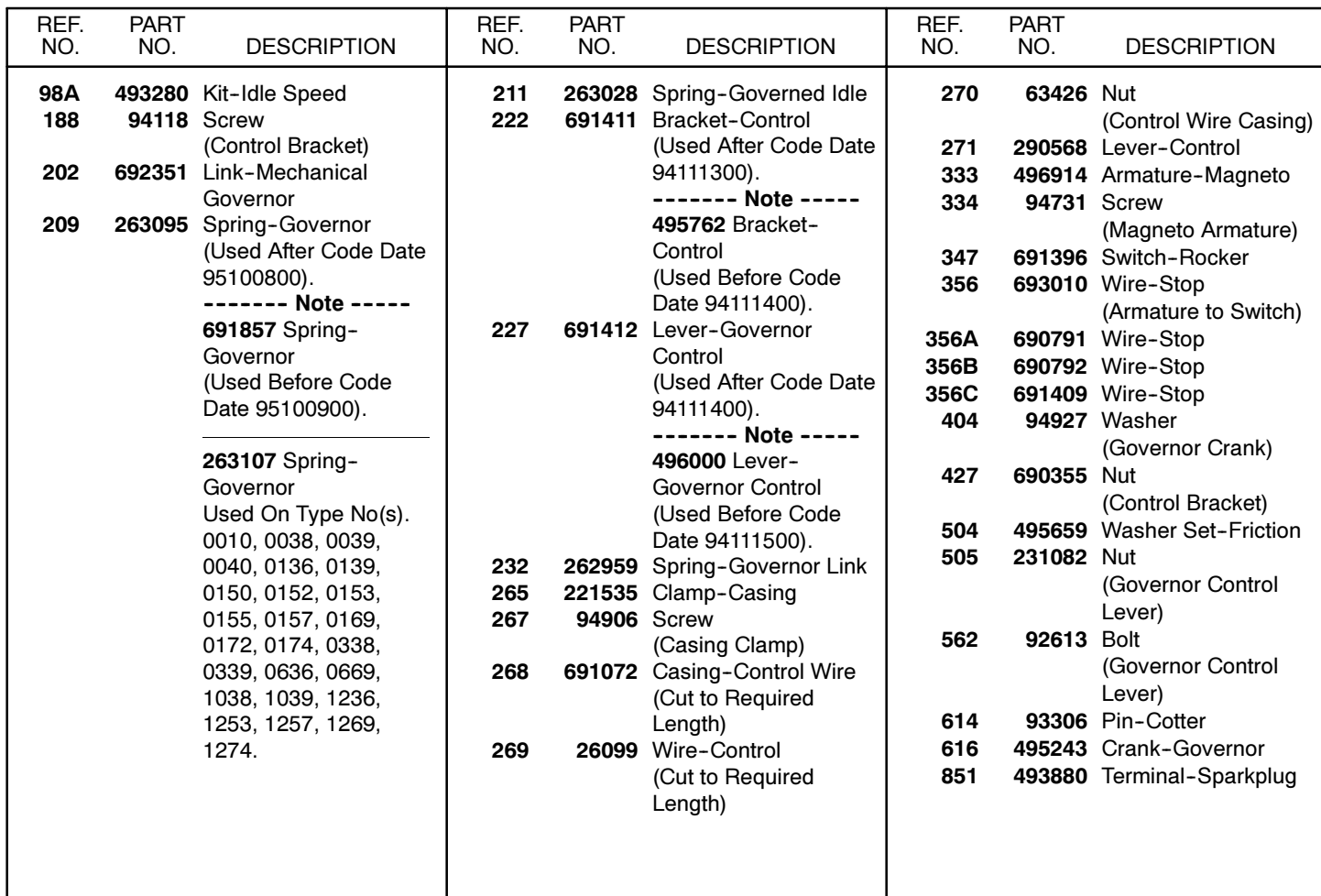
REF. NO.	PART NO.	DESCRIPTION	REF. NO.	PART NO.	DESCRIPTION	REF. NO.	PART NO.	DESCRIPTION
12	★270833	Gasket-Crankcase (.015 Thick, Standard) ----- <b>Note</b> ----- ★270895 Gasket-Crankcase (.005 Thick) ★270896 Gasket-Crankcase (.009 Thick)			<b>496788</b> Cover-Crankcase (Plain Bearing Cover-Flange Mount) Used On Type No(s). 0011, 0015, 0039, 0060, 0154, 0654, 0315, 0339, 0360, 1015, 1039, 1060, 1254, 1278. <b>496903</b> Cover-Crankcase Used on Type No(s). 0136, 0139, 0174, 0636, 1236, 1253, 1274.			Used On Type No(s). 0011, 0015, 0035, 0036, 0037, 0038, 0039, 0041, 0060, 0137, 0140, 0144, 0145, 0149, 0152, 0154, 0158, 0315, 0335, 0336, 0337, 0338, 0339, 0360, 0654, 1036, 1015, 1035, 1037, 1038, 1039, 1060, 1240, 1254, 1257, 1258, 1278. <b>693732</b> Screw (Crankcase Cover) (Used in Positions 1 and 6) Used On Type No(s). 0024, 0040, 0049, 0136, 0139, 0141, 0150, 0153, 0169, 0169, 0172, 0174, 0349, 0636, 0669, 1049, 1236, 1241, 1253, 1269, 1274, 1277.
18	497502	Cover-Crankcase Used On Model(s) 93432. ----- <b>Note</b> ----- <b>496679</b> Cover-Crankcase (Plain Bearing Cover-Flange Mount) Used on Type No(s). 0024, 0040, 0049, 0141, 0150, 0168, 0169, 0172, 0349, 0669, 1049, 1241, 1269, 1277.	20	★495355	Seal-Oil (PTO Side) ----- <b>Note</b> ----- <b>691356</b> Seal-Oil (PTO Side) (Includes Spacer) Used On Type No(s). 0136, 0139, 0174, 0636, 1236.	46	493747	Camshaft
			21	66768	Cap-Oil Fill	219	496786	Gear-Governor
			22	94682	Screw (Crankcase Cover) ----- <b>Note</b> ----- <b>691128</b> Screw (Crankcase Cover) (Used in Positions 1 and 6)	220	221551	Washer (Governor Gear)
						415	691363	Plug
						1194	★271485	Seal-O-Ring (Plug)

- ★ Included in Engine Gasket Set-Ref. No. 358.
- Included in Carburetor Overhaul Kit-Ref. No. 121.

- ◆ Included in Carburetor Gasket Set-Ref. No. 977.
- ◆ Included in Valve Gasket Set-Ref. No. 1095.

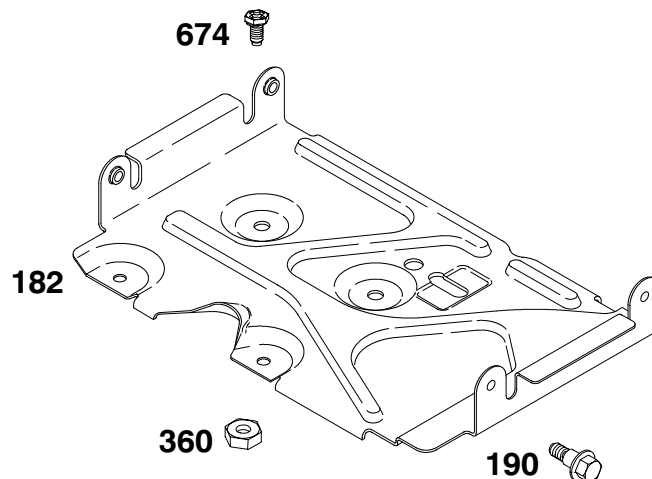
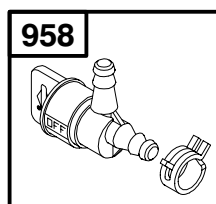
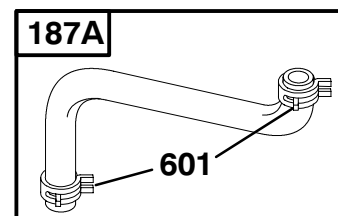
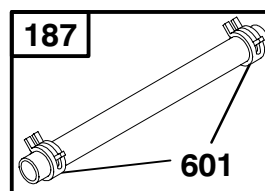
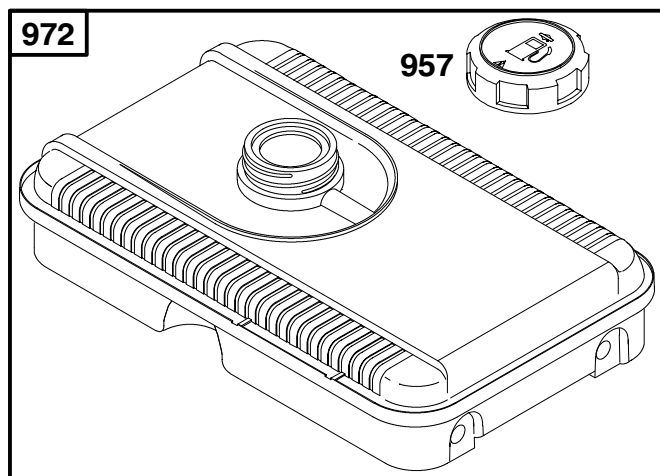


7



K&T Saw Shop 606-678-9623 or 606-561-4983



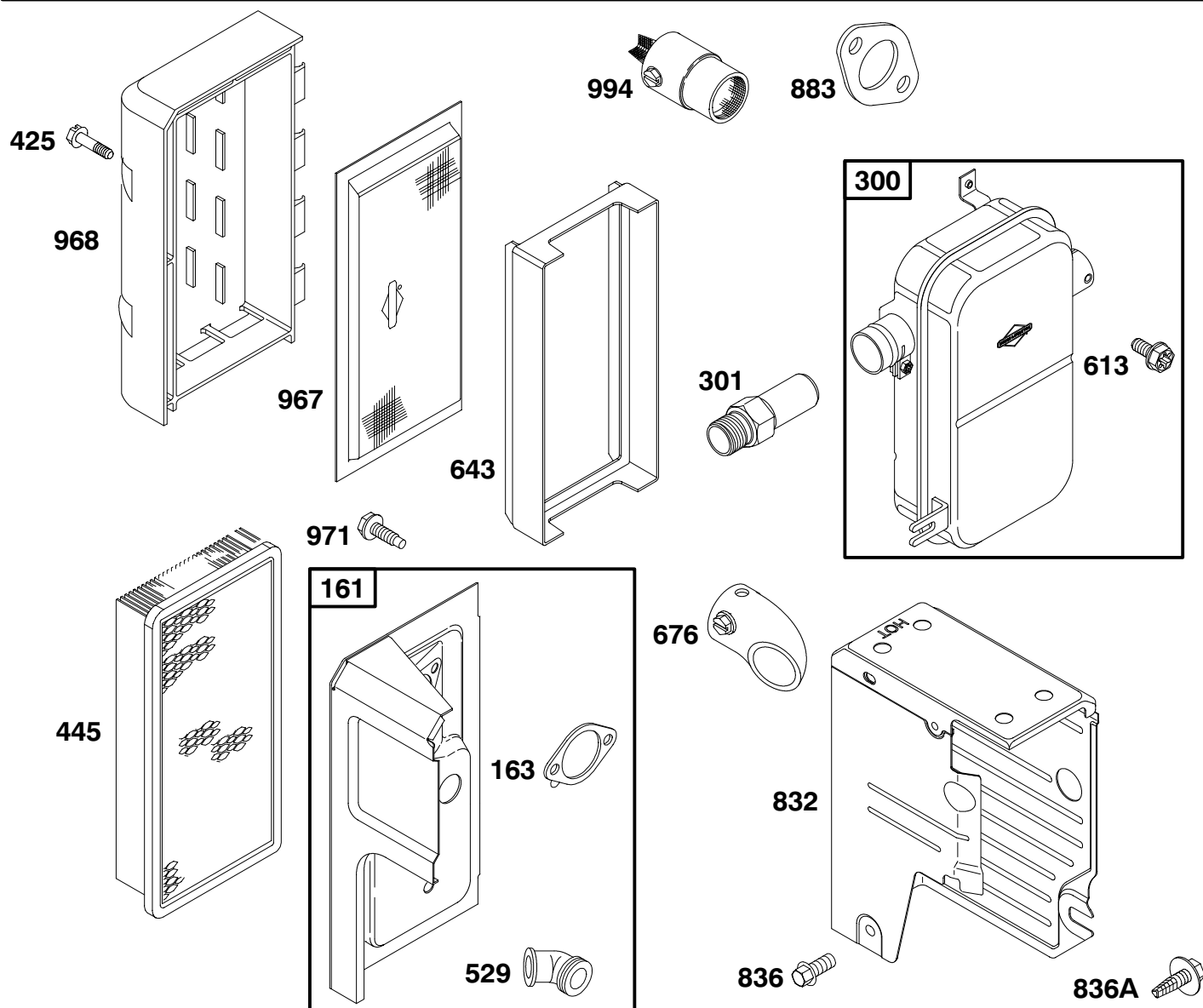


REF. NO.	PART NO.	DESCRIPTION	REF. NO.	PART NO.	DESCRIPTION	REF. NO.	PART NO.	DESCRIPTION
182	690485	Bracket-Fuel Tank	190	94895	Screw (Fuel Tank)	674	691108	Screw (Fuel Tank Bracket)
187	296004	Line-Fuel (Cut to Required-Length)	240	298090	Filter-Fuel	957	493988	Cap-Fuel Tank
187A	495218	Line-Fuel (Molded)	360	691105	Nut (Fuel Tank Bracket)	958	494769	Valve-Fuel Shut-Off
			601	93053	Clamp-Hose	972	690852	Tank-Fuel

- ★ Included in Engine Gasket Set-Ref. No. 358.
- Included in Carburetor Overhaul Kit-Ref. No. 121.

- ◆ Included in Carburetor Gasket Set-Ref. No. 977.
- ◆ Included in Valve Gasket Set-Ref. No. 1095.

# 93400 to 93499

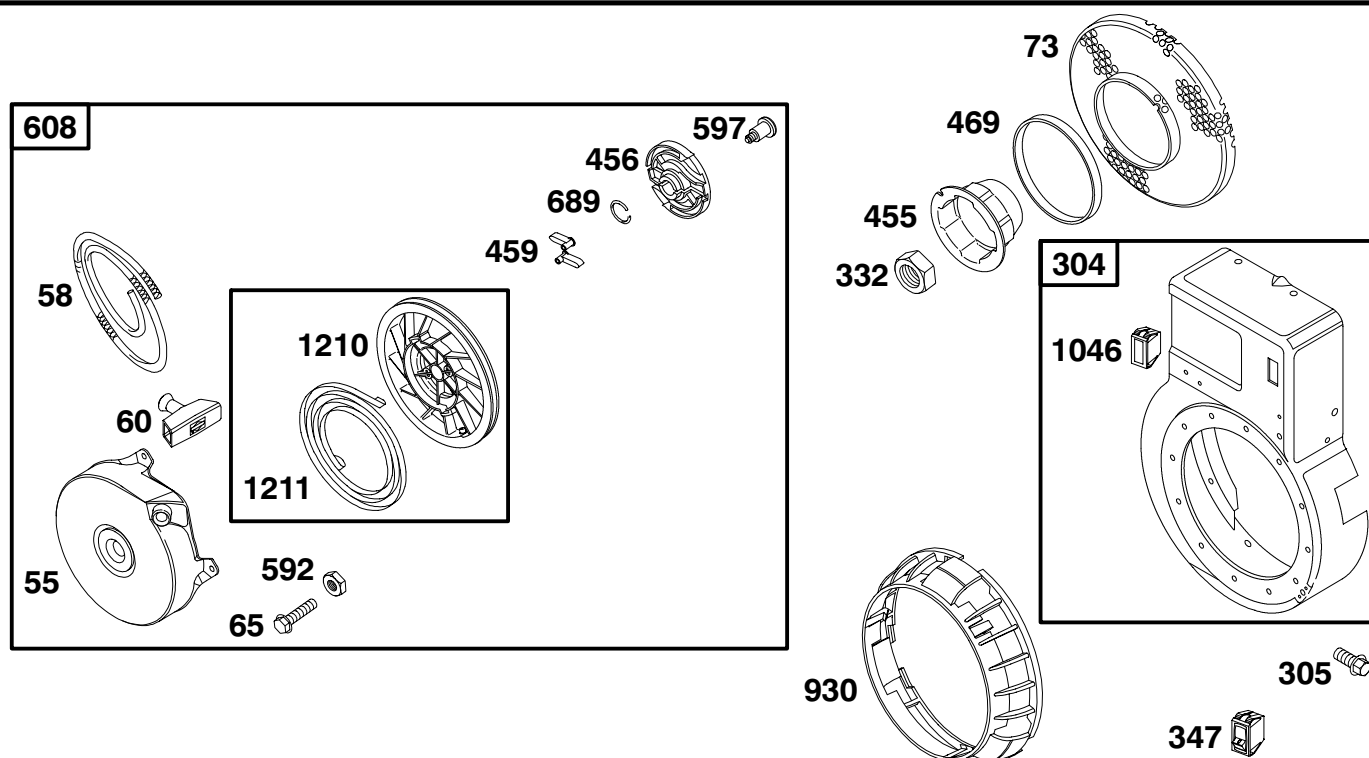


REF. NO.	PART NO.	DESCRIPTION	REF. NO.	PART NO.	DESCRIPTION	REF. NO.	PART NO.	DESCRIPTION
161	691393	Base-Air Cleaner	613	94905	Screw (Exhaust Muffler)	836A	94914	Screw (Muffler Guard)
163 ★	272948	Gasket-Air Cleaner	643	280871	Retainer-Air Filter	883 ★	272252	Gasket-Exhaust
300	692365	Muffler	676	495074	Deflector-Muffler	967	492889	Filter-Pre Cleaner
301	690526	Pipe-Exhaust	832	692368	Guard-Muffler	968	691327	Cover-Air Cleaner
425	94872	Screw (Air Cleaner Cover)	836	94929	Screw (Muffler Guard)	971	690370	Screw (Air Cleaner Base)
445	494511	Filter-Air Cleaner Cartridge				994	690813	Arrestor-Spark
529	66578	Grommet						

★ Included in Engine Gasket Set-Ref. No. 358.  
● Included in Carburetor Overhaul Kit-Ref. No. 121.

◆ Included in Carburetor Gasket Set-Ref. No. 977.  
Included in Valve Gasket Set-Ref. No. 1095.

# 93400 to 93499



## 1036 EMISSIONS LABEL

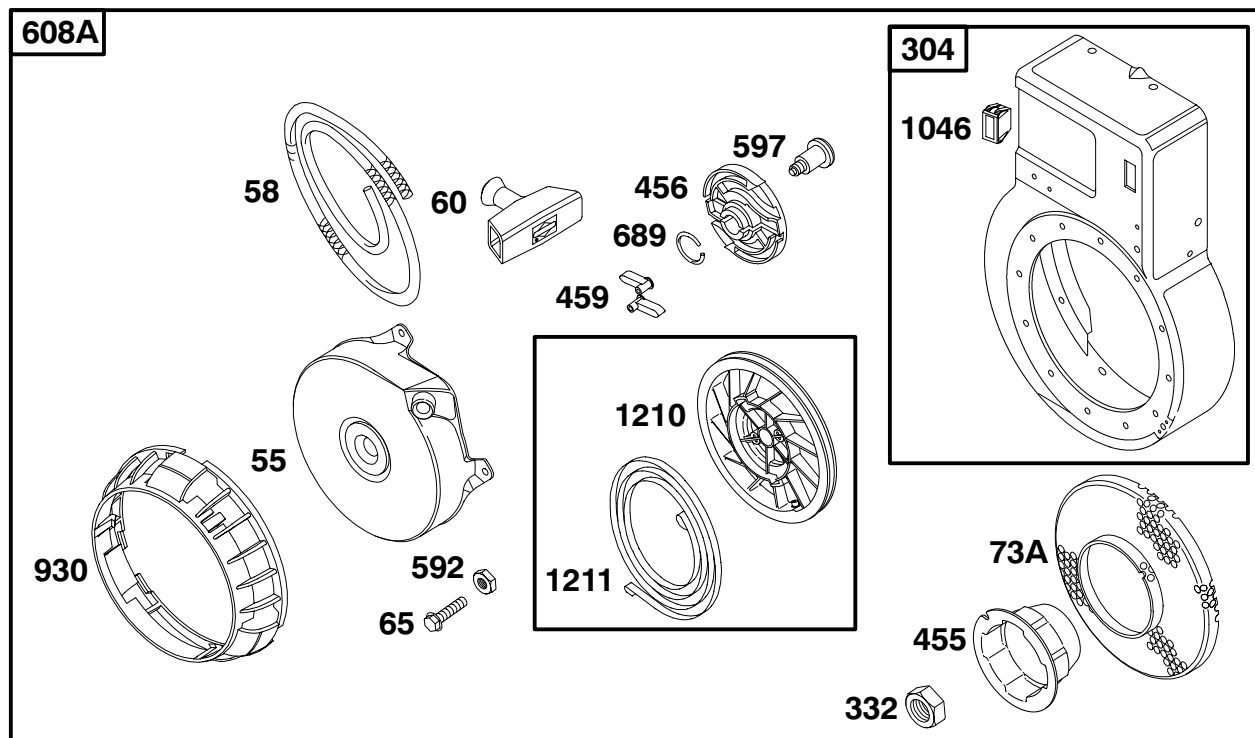
## 1036A EMISSIONS LABEL

REF. NO.	PART NO.	DESCRIPTION	REF. NO.	PART NO.	DESCRIPTION	REF. NO.	PART NO.	DESCRIPTION
55	692144	Housing-Rewind Starter	459	281505	Pawl-Ratchet	1036A	499333	Label-Emissions (Used Before Code Date 97070100).
58	281464	Rope-Starter (Cut to Required Length)	469	694420	Trim-Rotating Ring	1046	691337	Plug-Blower Housing
60	281101	Grip-Starter Rope	592	94908	Nut (Rewind Starter)	1210	499901	Pulley/Spring Assembly (Pulley)
65	94904	Screw (Rewind Starter)	597	94943	Screw (Pawl Friction Plate)	1211	499901	Pulley/Spring Assembly (Spring)
73	694018	Screen-Rotating (Used After Code Date 97071300).	608	499706	Starter-Rewind			
304	692622	Housing-Blower	689	263073	Spring-Friction			
305	94786	Screw (Blower Housing)	930	691348	Guard-Rewind			
332	94877	Nut (Flywheel)	1036	694427	Label-Emissions (Used After Code Date 98123100).			
347	691396	Switch-Rocker			----- Note -----			
455	691236	Cup-Flywheel			499334 Label-Emissions (Used After Code Date 97063000 and Before Code Date 99010100).			
456	281503	Plate-Pawl Friction						

- ★ Included in Engine Gasket Set-Ref. No. 358.
- Included in Carburetor Overhaul Kit-Ref. No. 121.

- ◆ Included in Carburetor Gasket Set-Ref. No. 977.
- ◆ Included in Valve Gasket Set-Ref. No. 1095.

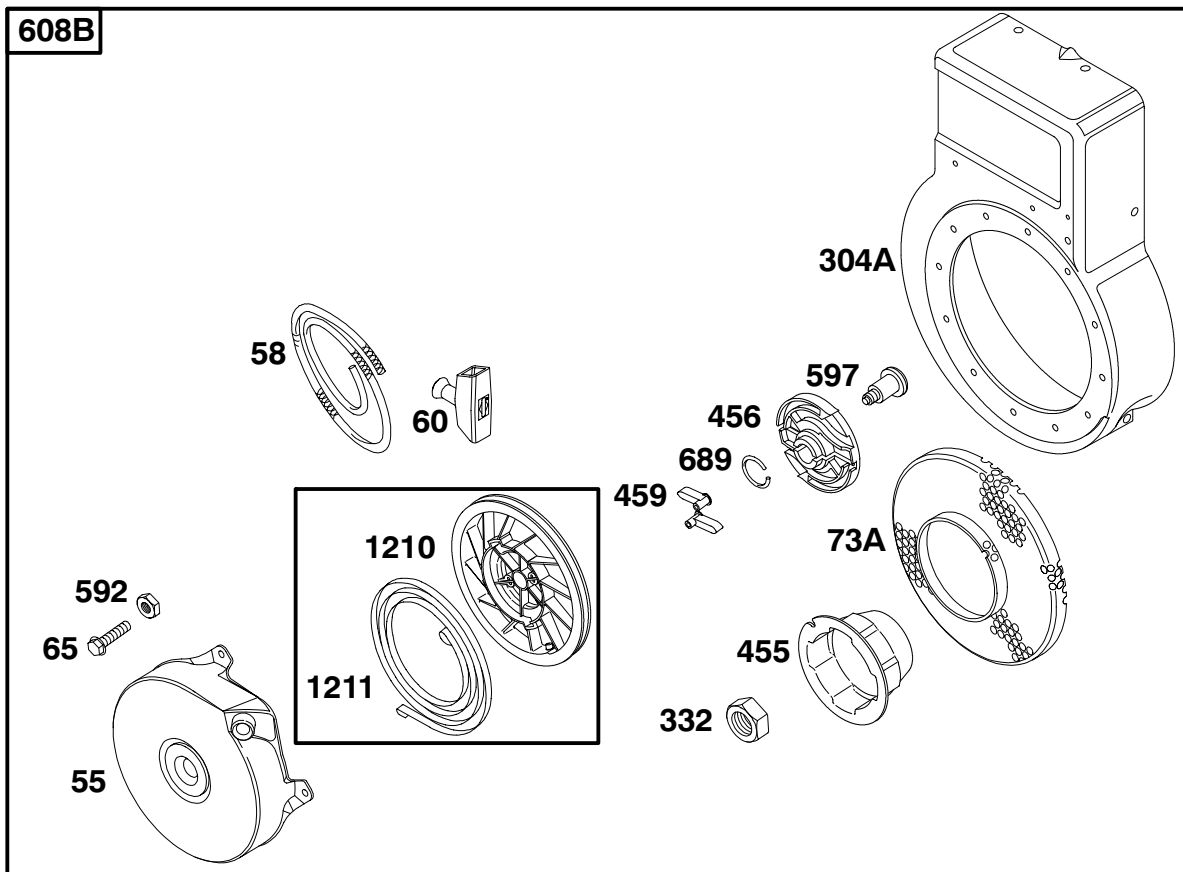
# 93400 to 93499



REF. NO.	PART NO.	DESCRIPTION	REF. NO.	PART NO.	DESCRIPTION	REF. NO.	PART NO.	DESCRIPTION
55	692144	Housing-Rewind Starter	332	94877	Nut (Flywheel)	689	263073	Spring-Friction
58	281464	Rope-Starter	455	691236	Cup-Flywheel	930	691348	Guard-Rewind
60	281101	Grip-Starter Rope	456	281503	Plate-Pawl Friction	1046	691337	Plug-Blower Housing
65	94904	Screw (Rewind Starter)	459	281505	Pawl-Ratchet	1210	499901	Pulley/Spring Assembly (Pulley)
73A	691235	Screen-Rotating	592	94908	Nut (Rewind Starter)	1211	499901	Pulley/Spring Assembly (Spring)
304	692622	Housing-Blower	597	94943	Screw (Pawl Friction Plate)			
			608A	690098	Starter-Rewind			

- ★ Included in Engine Gasket Set-Ref. No. 358.
- Included in Carburetor Overhaul Kit-Ref. No. 121.

- ◆ Included in Carburetor Gasket Set-Ref. No. 977.
- ◆ Included in Valve Gasket Set-Ref. No. 1095.

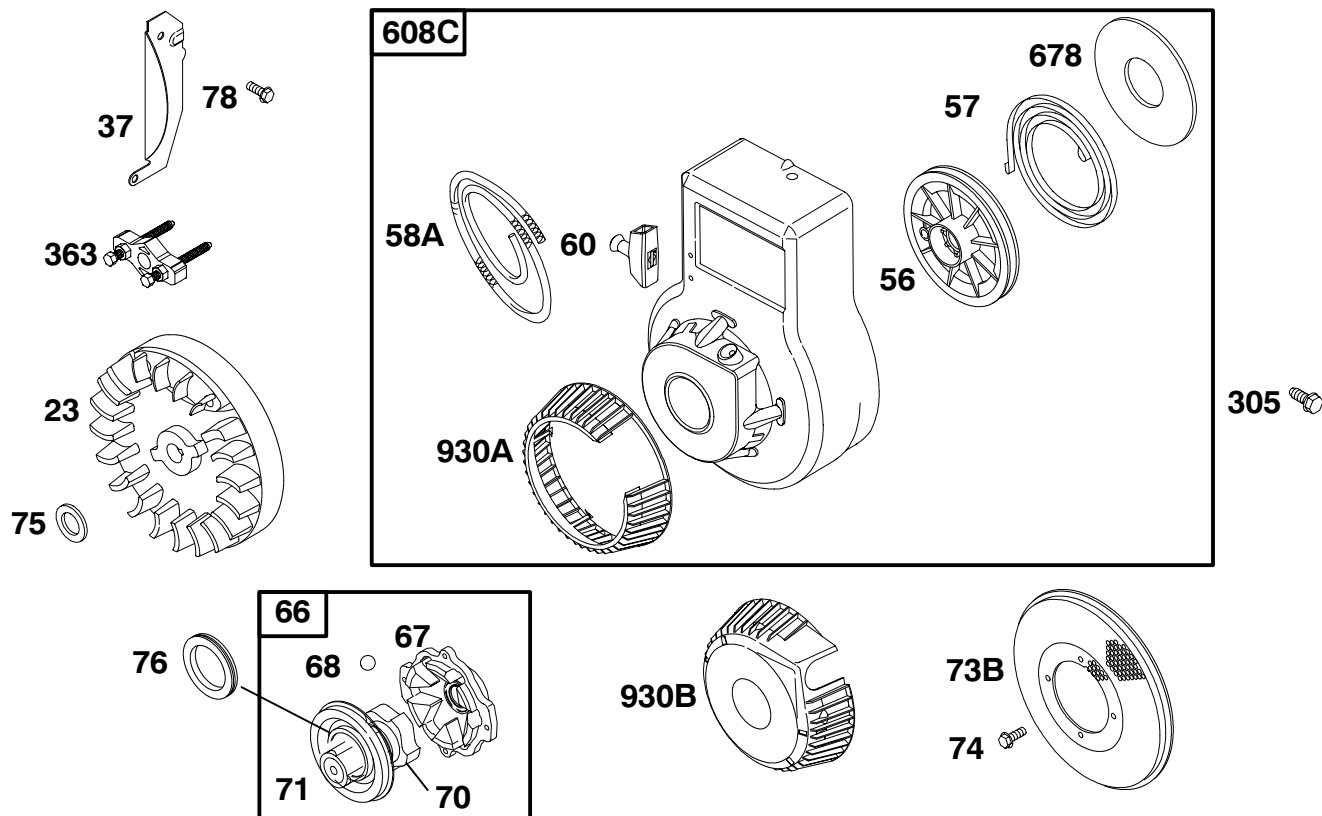
**608B**

REF. NO.	PART NO.	DESCRIPTION	REF. NO.	PART NO.	DESCRIPTION	REF. NO.	PART NO.	DESCRIPTION
55	692144	Housing-Rewind Starter	332	94877	Nut (Flywheel)	608B	690102	Starter-Rewind Used On Type No(s). 1236, 1253.
58	281464	Rope-Starter	455	691236	Cup-Flywheel	689	263073	Spring-Friction
60	281101	Grip-Starter Rope	456	281503	Plate-Pawl Friction	1210	499901	Pulley/Spring Assembly (Pulley)
65	94904	Screw (Rewind Starter)	459	281505	Pawl-Ratchet	1211	499901	Pulley/Spring Assembly (Spring)
73A	691235	Screen-Rotating	592	94908	Nut (Rewind Starter)			
304A	694144	Housing-Blower	597	94943	Screw (Pawl Friction Plate)			

★ Included in Engine Gasket Set-Ref. No. 358.  
 ● Included in Carburetor Overhaul Kit-Ref. No. 121.

◆ Included in Carburetor Gasket Set-Ref. No. 977.  
 Included in Valve Gasket Set-Ref. No. 1095.

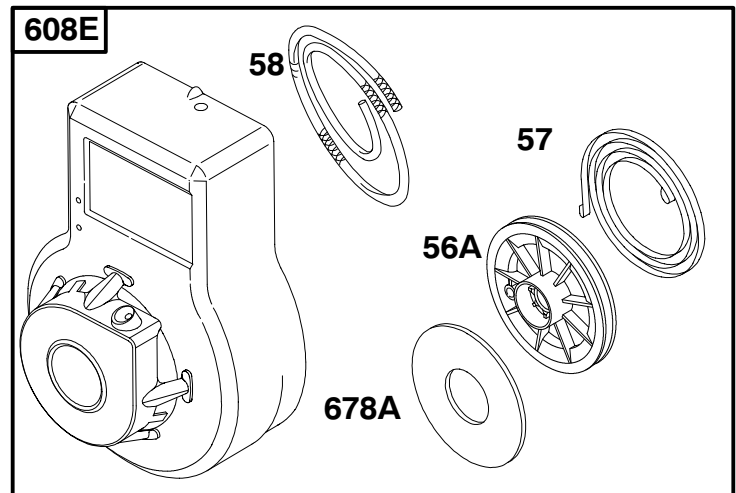
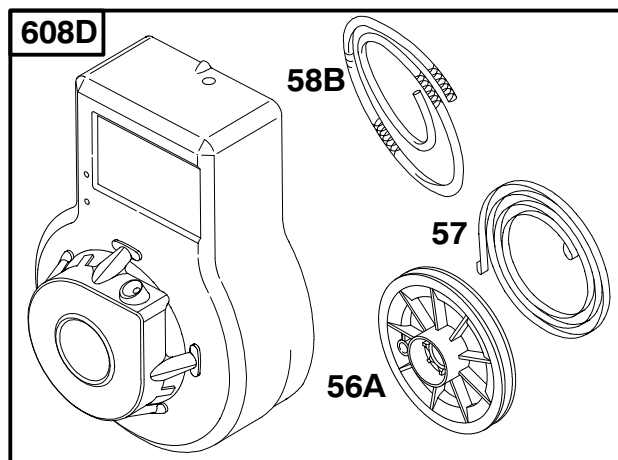
## 93400 to 93499



REF. NO.	PART NO.	DESCRIPTION	REF. NO.	PART NO.	DESCRIPTION	REF. NO.	PART NO.	DESCRIPTION
23	690843	Flywheel ----- Note ----- 495046 Flywheel Used On Type No(s). 0136, 0636, 1236. 496893 Flywheel Used On Type No(s). 0154, 0654, 1254.	67	394897	Housing-Clutch (Used Before Code Date 97060600).	78	690364	Screw (Flywheel Guard)
37	690463	Guard-Flywheel	68	63770	Ball-Clutch (Used Before Code Date 97060600).	305	94786	Screw (Blower Housing)
56	281336	Pulley-Starter	70	298799	Ratchet-Clutch (Used Before Code Date 97060600).	363	19069	Puller-Flywheel
57	490179	Spring-Rewind Starter	71	691359	Cover-Ratchet (Used Before Code Date 97060600).	608C	497584	Starter-Rewind (12 o'Clock) ----- Note ----- 690098 Starter-Re- wind (12 o'Clock) (Used Before Code Date 94082900).
58A	280406	Rope-Starter (Cut to Required Length)	73B	221661	Screen-Rotating	678	281353	Spacer-Rewind
60	281101	Grip-Starter Rope	74	93758	Screw (Rotating Screen)	930A	691330	Guard-Rewind
66	399671	Clutch-Starter (Used Before Code Date 97060600).	75	223047	Washer (Flywheel)	930B	690601	Guard-Rewind (Used Before Code Date 94082900).
			76	68238	Seal-Ratchet			

★ Included in Engine Gasket Set-Ref. No. 358.  
● Included in Carburetor Overhaul Kit-Ref. No. 121.

◆ Included in Carburetor Gasket Set-Ref. No. 977.  
Included in Valve Gasket Set-Ref. No. 1095.



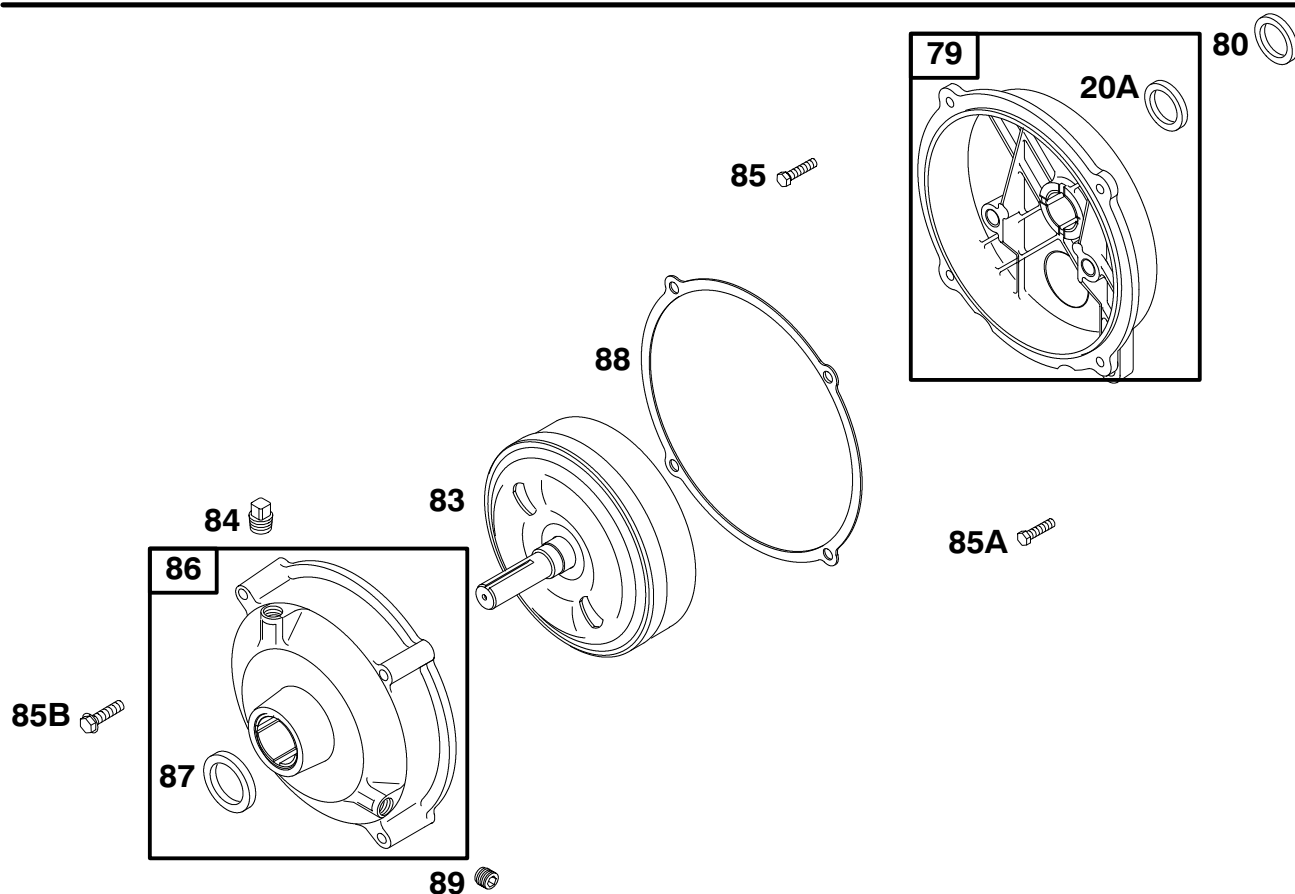
305

REF. NO.	PART NO.	DESCRIPTION	REF. NO.	PART NO.	DESCRIPTION	REF. NO.	PART NO.	DESCRIPTION
56A	280439	Pulley-Starter	608D		Starter-Rewind (12 o'Clock) (For Replacement Rewind Starter, See Ref 608B) (Used After Code Date 95071800). Used On Type No(s). 0136, 0139, 0153, 0636.	608E	498007	Starter-Rewind (10 o'Clock) Used On Type No(s). 0141, 0145, 0155, 0157, 0158.
57	490179	Spring-Rewind Starter				678A	490817	Starter-Rewind
58	281464	Rope-Starter (Cut to Required Length)						
58B	281228	Rope-Starter (Cut to Required Length)						
305	94786	Screw (Blower Housing)			----- Note ----- 493414 Starter-Rewind (12 o'Clock) (Used Before Code Date 95071900). Used On Type No(s). 0136, 0139.			

★ Included in Engine Gasket Set-Ref. No. 358.  
● Included in Carburetor Overhaul Kit-Ref. No. 121.

◆ Included in Carburetor Gasket Set-Ref. No. 977.  
Included in Valve Gasket Set-Ref. No. 1095.

## 93400 to 93499

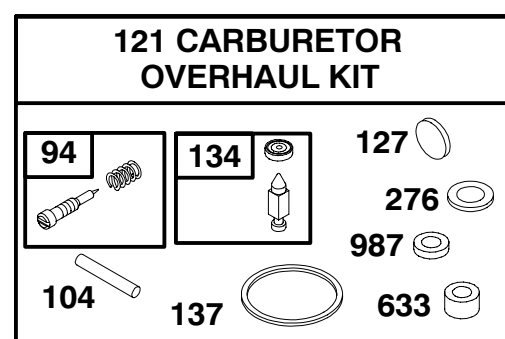
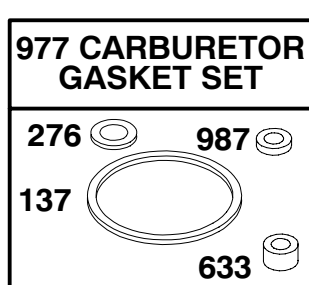
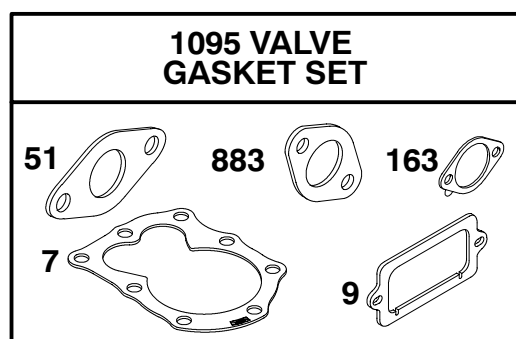
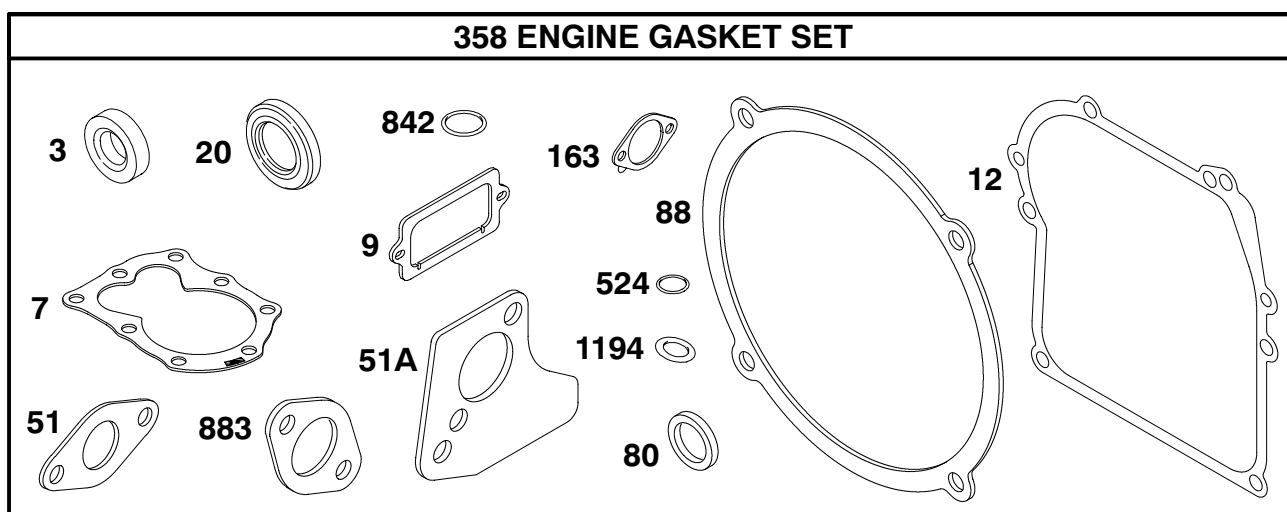


REF. NO.	PART NO.	DESCRIPTION	REF. NO.	PART NO.	DESCRIPTION	REF. NO.	PART NO.	DESCRIPTION
20A	299819	Seal-Oil	85	690369	Screw (Gear Cover to Gear Reduction) (7/8" Long)	86	690608	Cover-Gear
79	690605	Case-Reduction Gear	85A	691122	Screw (Gear Cover to Gear Reduction) (1 1/2" Long)	87	19011	Seal-Gear Reduction
80	★27667	Gasket-Gear Case	85B	691117	Screw (Gear Cover to Gear Reduction)	88	★27313	Gasket-Gear Reduction Cover
83	690374	Shaft-Auxiliary Drive				89	94886	Plug-Oil (Flush)
84	691121	Plug-Breather						

★ Included in Engine Gasket Set-Ref. No. 358.  
● Included in Carburetor Overhaul Kit-Ref. No. 121.

◆ Included in Carburetor Gasket Set-Ref. No. 977.  
Included in Valve Gasket Set-Ref. No. 1095.





REF. NO.	PART NO.	DESCRIPTION	REF. NO.	PART NO.	DESCRIPTION	REF. NO.	PART NO.	DESCRIPTION
3	★299819	Seal-Oil (Magneto Side)	20	★495355	Seal-Oil (PTO Side)	137	◆693981	Gasket-Float Bowl
7	★ 272694	Gasket-Cylinder Head	51	★ 272295	Gasket-Intake	163	★ 272948	Gasket-Air Cleaner
9	★ 27549	Gasket-Breather	51A	★273113	Gasket-Intake	276	◆271716	Washer-Sealing
12	★270833	Gasket-Crankcase (.015 Thick, Standard)	80	★27667	Gasket-Gear Case	358	496865	Gasket Set-Engine
----- Note -----			88	★27313	Gasket-Gear Reduction Cover	524	★271485	Seal-Dipstick Tube
	★270895	Gasket-Crankcase (.005 Thick)	94	◆493765	Kit-Idle Mixture	633	◆693867	Seal-Choke/Throttle Shaft
	★270896	Gasket-Crankcase (.009 Thick)	104	◆691242	Pin-Float Hinge	883	★ 272252	Gasket-Exhaust
			121	498260	Kit-Carburetor Overhaul	977	498261	Gasket Set-Carburetor
			127	◆223472	Plug-Welch	842	★270920	Seal-Dipstick/Tube
			134	◆398188	Kit-Needle/Seat	987	◆691321	Seal-Throttle Shaft
						1194	★271485	Seal-O-Ring (Plug)
						1095	498525	Gasket Set-Valve

★ Included in Engine Gasket Set-Ref. No. 358.

● Included in Carburetor Overhaul Kit-Ref. No. 121.

◆ Included in Carburetor Gasket Set-Ref. No. 977.

Included in Valve Gasket Set-Ref. No. 1095.