

**28A700 to 28A799**

# **Illustrated Parts List**

## **Model Series**

### **28A700 to 28A799**

**TYPE NUMBERS**

0101, 0102, 0112,  
0113, 0116, 0117,  
0118, 0121, 0122,  
0135, 0136, 0604,  
0625.

**TO FIND****THE CORRECT NUMBER OF THE PART YOU NEED:  
FOLLOW THE INSTRUCTIONS BELOW**

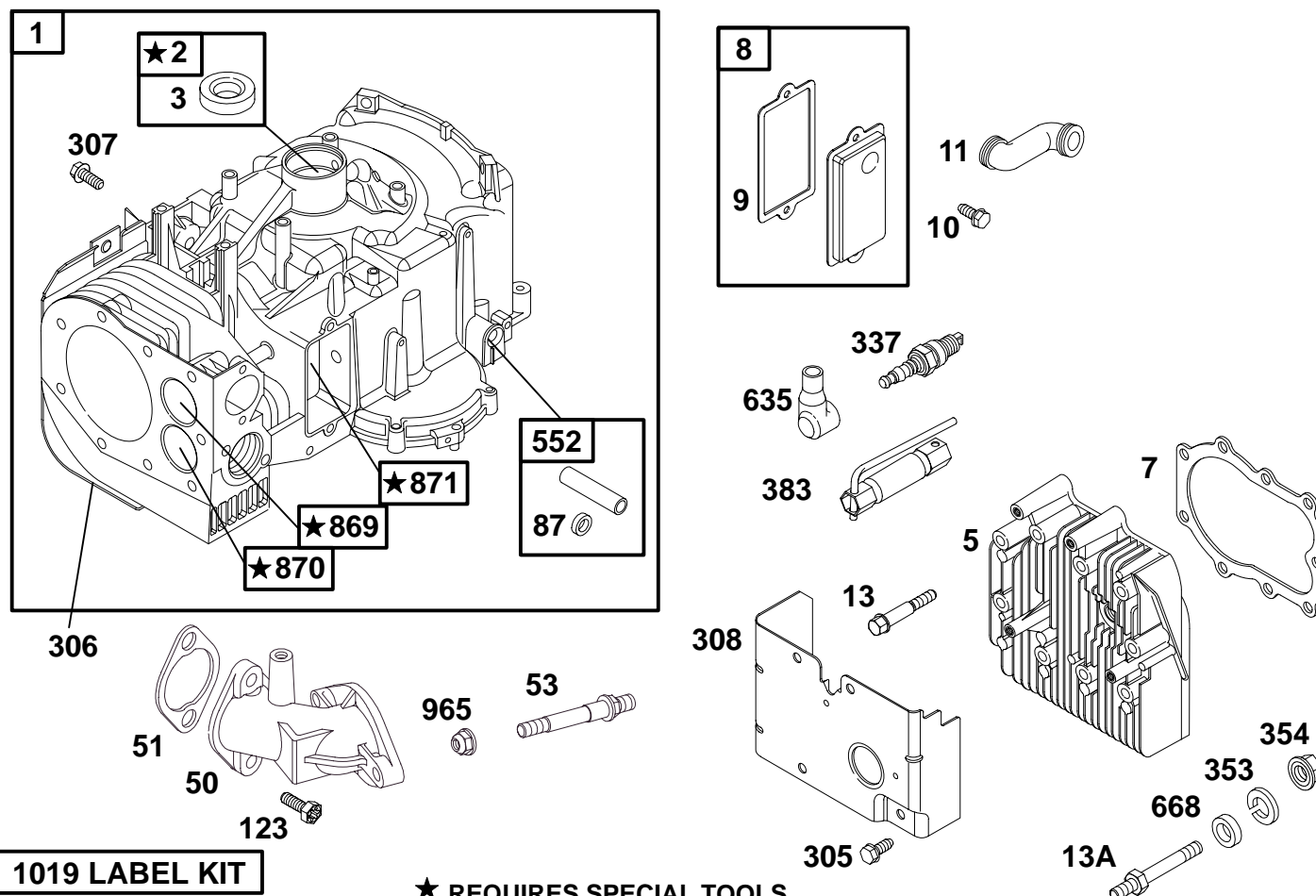
- A. Refer to Engine Model, Type and Code Number that is stamped on the blower housing of engine. Engine type numbers such as 0123 01 are listed only as 0123 in most instances. The two digits (01 or 02, etc.) to the right of the space may be required for more accurate parts identification in some instances. Select the Illustrated Parts List covering the correct Model Series and Type Number.
- B. Refer to the Illustrations and compare the original part with Illustration. The number next to the illustration is the Reference Number. Assemblies include all parts shown in frames. All parts shown in assembly frames having individual reference numbers can be purchased separately.
- C. After the Reference Number has been identified, refer to the Numerical text, where Reference and Primary Part Number are listed. **THE PRIMARY PART IS USED ON ALL TYPE NUMBERS EXCEPT THOSE TYPE NUMBERS UNDER "NOTE."**
- D. If a "Note" appears below the Primary Part Number, it means that this part differs from the Primary Part for certain types. If your Type number is listed under "Note," order the part referred to at the "Note."
- E. If your Engine Type Number does not appear after any part number listed under "Note," use the Primary Part Number.
- F. For Engine Type Numbers not covered by this book, check other Parts Lists having the same engine model or contact your source of supply.

PRINTED IN U.S.A.



COPYRIGHT by BRIGGS & STRATTON CORPORATION  
All rights reserved. No part of this material may be reproduced or transmitted, in any form or by any means, electronic or mechanical, including photocopying, recording or by any information storage and retrieval system, without permission in writing from Briggs & Stratton Corporation.

## 28A700 to 28A799



**1019 LABEL KIT**

**1058 OWNER'S MANUAL**

★ **REQUIRES SPECIAL TOOLS TO INSTALL. SEE REPAIR INSTRUCTION MANUAL.**

| REF. NO. | PART NO. | DESCRIPTION                               | REF. NO. | PART NO. | DESCRIPTION          | REF. NO. | PART NO. | DESCRIPTION                   |
|----------|----------|---|----------|----------|----------------------|----------|----------|-------------------------------|
| 1        | 496414   | Cylinder Assembly                         | 87       | ★491323  | Seal-Governor Shaft  | 871      | 261961   | Bushing-Guide (Exhaust)       |
| 2        | 399265   | Bushing                                   | 123      | 94616    | Screw-Torx® Hex.     |          |          | ———— <b>Note</b> ————         |
| 3        | ★391086  | Seal-Oil                                  | 305      | 94786    | Screw-Hex.           |          |          | 231218 Bushing-Guide (Intake) |
| 5        | 494240   | Head-Cylinder                             | 306      | 224545   | Shield-Cylinder      |          |          |                               |
| 7        | Ø★271866 | Gasket-Cylinder Head                      | 307      | 94386    | Screw-Hex.           |          |          |                               |
| 8        | 495735   | Breather Assembly                         | 308      | 491490   | Cover-Cylinder       |          |          |                               |
| 9        | Ø★27803  | Gasket-Breather                           | 337      | 802592   | Plug-Spark           | 965      | 94010    | Nut-Hex.                      |
| 10       | 94621    | Screw-Hex.                                | 353      | 94315    | Washer-Lock          | 1019     | 491254   | Label Kit                     |
| 11       | 280100   | Tube-Breather                             | 354      | 94314    | Nut-Hex.             | 1058     | 273131   | Owner's Manual                |
| 13       | 94622    | Screw-Hex.                                | 383      | 89838    | Wrench-Spark Plug    |          |          | Emission Engines              |
| 13A      | 94776    | Stud-Hex. Drive Used on Type No(s). 0136. | 552      | 491986   | Bushing-Gov. Crank   |          |          | ———— <b>Note</b> ————         |
|          |          |   | 635      | 66538    | Boot-Spark Plug      |          |          | 272697 Owner's Manual         |
| 50       | 213819   | Manifold-Intake                           | 668      | 231109   | Spacer               |          |          | Nonemission Engines           |
| 51       | Ø★272554 | Gasket-Intake                             | 869      | 261463   | Seat-Valve (Intake)  |          |          |                               |
| 53       | 94637    | Stud-Carburetor Mounting                  | 870      | 262924   | Seat-Valve (Exhaust) |          |          |                               |

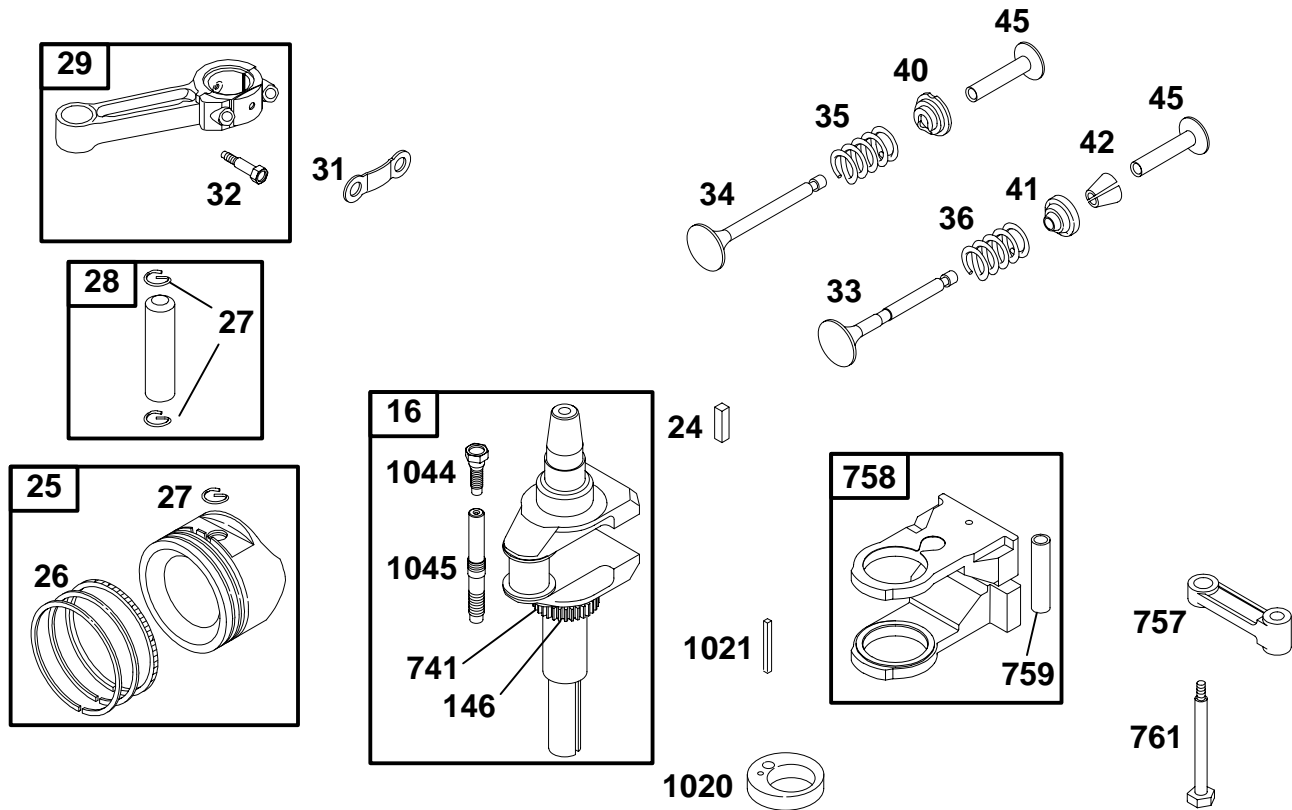
★ Included in Gasket Set-Part Number 494241.

● Included in Carburetor Kit-See Ref. 121.

◆ Included in Carburetor Gasket Set-Part No. 494385.

Ø Included in Valve Overhaul Gasket Set-Part No. 498539.

## 28A700 to 28A799



| REF. NO. | PART NO. | DESCRIPTION                      | REF. NO. | PART NO.    | DESCRIPTION                 | REF. NO. | PART NO. | DESCRIPTION          |
|----------|----------|----------------------------------|----------|-------------|-----------------------------|----------|----------|----------------------|
| 16       | 495162   | Crankshaft                       | 27       | 260924      | Lock-Piston Pin             | 146      | 94196    | Key-Timing           |
| 24       | 222698   | Key-Flywheel                     | 28       | 299691      | Pin-Piston (Standard)       | 741      | 262932   | Gear-Timing          |
| 25       | 391285   | Piston Assembly (Standard)       |          | <b>Note</b> |                             | 757      | 213998   | Link-Counterweight   |
|          |          | <b>Note</b>                      |          | 391286      | Pin-Piston (.005" O.S.)     | 758      | 399891   | Counterweight        |
|          |          | 391287 Piston Assy. (.010" O.S.) | 29       | 490348      | Rod-Connecting              | 759      | 230787   | Pin-Counterweight    |
|          |          | 391288 Piston Assy. (.020" O.S.) |          | <b>Note</b> |                             | 761      | 94593    | Screw-Hex            |
|          |          | 391289 Piston Assy. (.030" O.S.) |          | 490469      | Rod-Conn. (.020" Undersize) | 1020     | 262243   | Eccentric            |
| 26       | 391780   | Ring Set (Standard)              | 31       | 222299      | Lock-Rod Screw              | 1021     | 94160    | Pin-Groove           |
|          |          | <b>Note</b>                      | 32       | 94671       | Screw-Connecting Rod.       | 1044     | 94673    | Screw-Shoulder       |
|          |          | 392331 Ring Set (Chrome Std.)    | 33       | 262246      | Valve-Exhaust               | 1045     | 231828   | Extension-Crankshaft |
|          |          | 391781 Ring Set (.010" O.S.)     | 34       | 262247      | Valve-Intake                |          |          |                      |
|          |          | 391782 Ring Set (.020" O.S.)     | 35       | 65906       | Spring-Valve                |          |          |                      |
|          |          | 391783 Ring Set (.030" O.S.)     | 36       | 26828       | Spring-Valve                |          |          |                      |
|          |          |                                  | 40       | 221596      | Retainer-Valve              |          |          |                      |
|          |          |                                  | 41       | 292260      | Retainer-Valve              |          |          |                      |
|          |          |                                  | 42       | 494553      | Keeper-Valve                |          |          |                      |
|          |          |                                  | 45       | 262248      | Tappet-Valve                |          |          |                      |

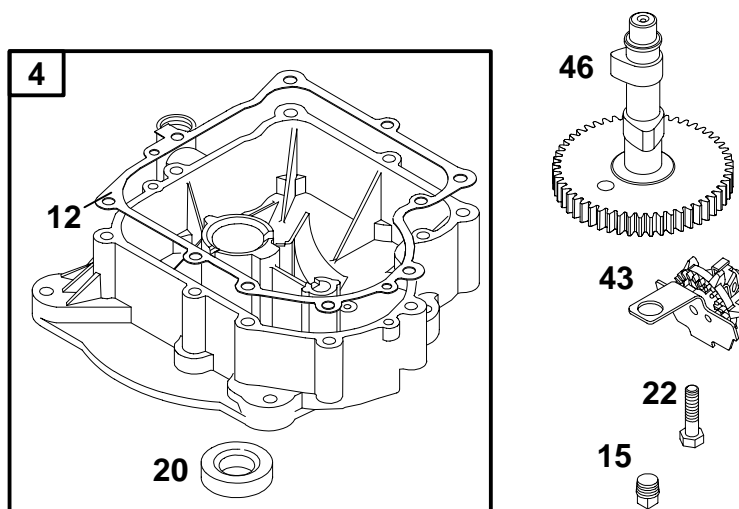
★ Included in Gasket Set-Part Number 494241.

● Included in Carburetor Kit-See Ref. 121.

◆ Included in Carburetor Gasket Set-Part No. 494385.

⊗ Included in Valve Overhaul Gasket Set-Part No. 498539.

## 28A700 to 28A799



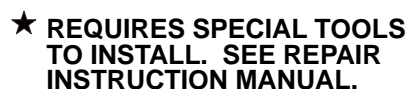
| REF. NO.  | PART NO.       | DESCRIPTION                               | REF. NO.  | PART NO.       | DESCRIPTION    | REF. NO.  | PART NO.      | DESCRIPTION          |
|-----------|----------------|---|-----------|----------------|----------------|-----------|---------------|----------------------|
| <b>4</b>  | <b>494238</b>  | Sump-Engine                               | <b>15</b> | <b>94239</b>   | Plug-Oil Drain | <b>43</b> | <b>490815</b> | Governor/Oil Slinger |
| <b>12</b> | <b>★271916</b> | Gasket-Crankcase<br>(.015" Thick)         | <b>20</b> | <b>★291675</b> | Seal-Oil       | <b>46</b> | <b>212897</b> | Gear-Cam             |
|           |                | <b>Note</b>                               | <b>22</b> | <b>94624</b>   | Screw-Hex.     |           |               |                      |
|           |                | ★271997 Gasket-Crankcase<br>(.005" Thick) |           |                |                |           |               |                      |
|           |                | ★271996 Gasket-Crankcase<br>(.009" Thick) |           |                |                |           |               |                      |

★ Included in Gasket Set-Part Number 494241.

● Included in Carburetor Kit-See Ref. 121.

◆ Included in Carburetor Gasket Set-Part No. 494385.

⌀ Included in Valve Overhaul Gasket Set-Part No. 498539.

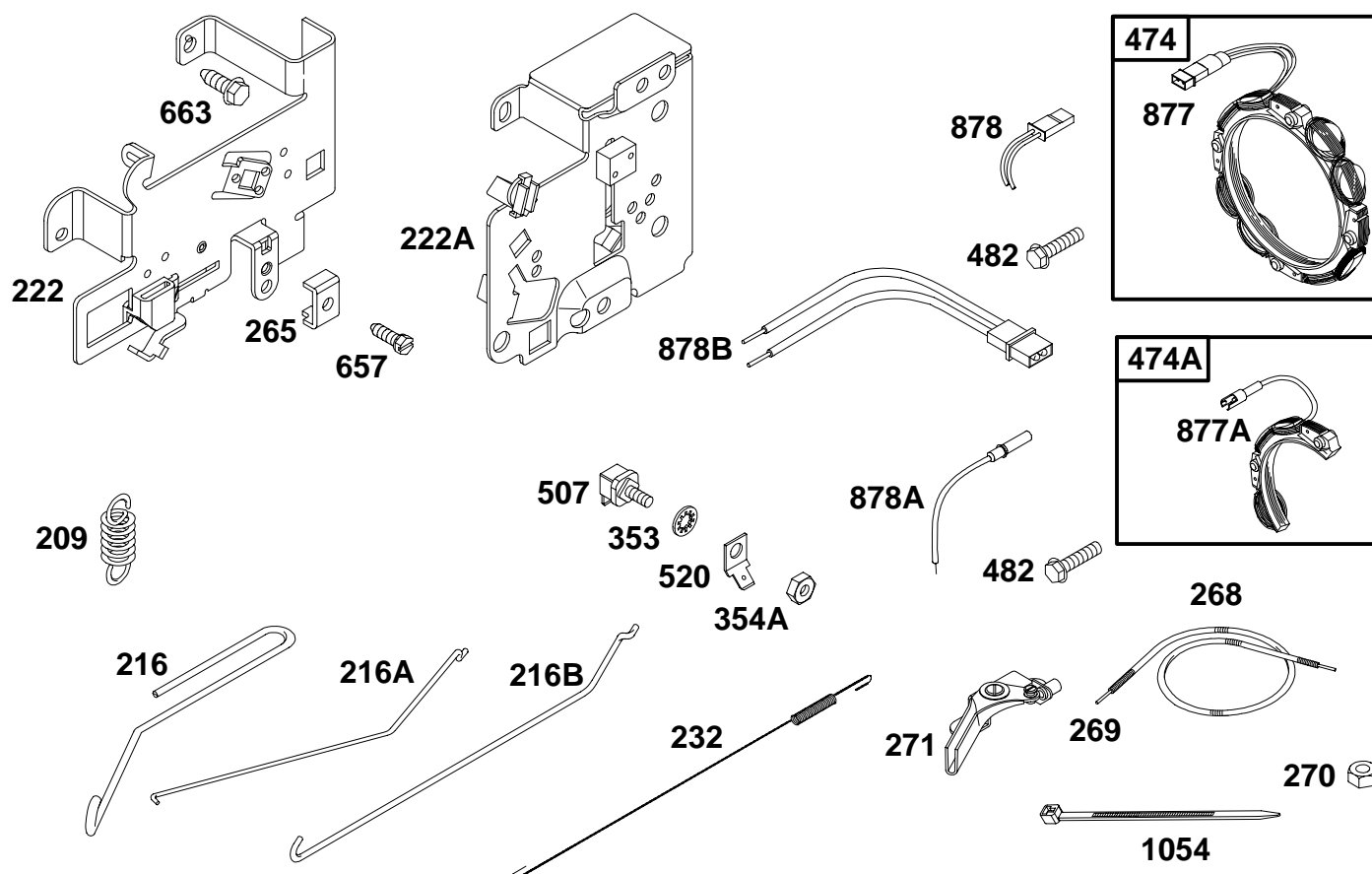


| REF. NO. | PART NO. | DESCRIPTION             | REF. NO. | PART NO. | DESCRIPTION             | REF. NO. | PART NO. | DESCRIPTION             |
|----------|----------|-------------------------|----------|----------|-------------------------|----------|----------|-------------------------|
| 51A      | ●272465  | Gasket—Intake           | 130      | 224668   | Valve—Throttle          |          |          | 499038 Nozzle—Carb.     |
| 93       | ●281346  | Bushing—Thr. Shaft      | 131      | 494885   | Throttle Shaft Kit      |          |          | (High Altitude—LMT      |
| 94       | 498030   | Valve—Idle Adjustment   | 133      | 494381   | Float—Carburetor        |          |          | 162, 165)               |
| 94A      | 496589   | Valve—Idle Adjustment   | 137      | ●281165  | Gasket—Float Bowl       |          |          | 499040 Nozzle—Carb.     |
| 95       | ●94098   | Screw—Choke/Throttle    | 138      | ●281164  | Washer                  |          |          | (High Altitude—LMT      |
| 98       | 495800   | Screw—Idle Speed        | 141      | 495097   | Choke Shaft Kit         |          |          | 166)                    |
| 104      | ●231789  | Pin—Float Hinge         |          |          | (Manual Choke)          |          |          | 497970 Nozzle—Carb.     |
| 105      | ●231855  | Valve—Needle            | 141A     | 495931   | Choke Shaft Kit         |          |          | (High Altitude—LMT 97   |
| 106      | ●231854  | Seat—Inlet              |          |          | (Choke A Matic)         |          |          | 100)                    |
|          |          | (Gravity Feed)          | 142      | ●499037  | Nozzle—Carburetor       |          |          | 498258 Nozzle—Carb.     |
| 108      | 224667   | Valve—Choke             |          |          | (Standard—LMT 162,      |          |          | (High Altitude—LMT 63   |
|          |          | (Manual Choke)          |          |          | 165)                    |          |          | 66, 100, 108, 111, 133, |
| 108A     | 224666   | Valve—Choke             |          |          | ————— <b>Note</b> ————— |          |          | 136)                    |
|          |          | (Choke A Matic)         |          |          | ●499039 Nozzle—Carb.    | 147      | ●497472  | Jet—Pilot               |
| 111      | 262820   | Spring—Friction         |          |          | (Standard—LMT 166)      |          |          | (LMT 63, 66, 97, 100)   |
| 125      | 499161   | Carburetor              |          |          | ●497568 Nozzle—Carb.    |          |          | ————— <b>Note</b> ————— |
|          |          | (LMT 162, 165, 166)     |          |          | (Standard—LMT 97,       |          |          | 231983 Jet—Pilot        |
|          |          | ————— <b>Note</b> ————— |          |          | 100)                    |          |          | (LMT 108, 111, 133,     |
|          |          | 498231 Carburetor       |          |          | ●496519 Nozzle—Carb.    |          |          | 136)                    |
|          |          | (LMT 108, 111)          |          |          | (Standard—LMT 63,       | 186      | 493496   | Connector—Hose          |
|          |          | (Used Before Code       |          |          | 66)                     | 634      | ●494453  | Seal—Spring Assembly    |
|          |          | Date 96072600).         |          |          | ●497860 Nozzle—Carb.    | 634A     | ●494455  | Seal—Spring Assembly    |
|          |          | Used on Type No(s).     |          |          | (Standard—LMT 108,      | 950      | 94642    | Screw—Bowl Mounting     |
|          |          | 0604.                   |          |          | 133, 136)               | 975      | 495933   | Bowl—Float              |
| 127      | ●        | Plug—Welch              |          |          | ●498545 Nozzle—Carb.    | 987      | ●281166  | Seal—Throttle Shaft     |
|          |          | (Sold in Kit Only)      |          |          | (Standard—LMT 111)      | 1091     | 281364   | Cap—Limiter             |

Ø Included in Valve Overhaul Gasket Set—Part No. 498539.

5

## 28A700 to 28A799



| REF. NO. | PART NO. | DESCRIPTION  | REF. NO. | PART NO. | DESCRIPTION                                       | REF. NO. | PART NO. | DESCRIPTION                       |
|----------|----------|--|----------|----------|---|----------|----------|-----------------------------------|
| 209      | 260871   | Spring-Governor<br><b>Note</b><br>260695 Spring-Gov. Used on Type No(s). 0117.<br>261126 Spring-Gov. Used on Type No(s). 0121.<br>261306 Spring-Gov. Used on Type No(s). 0113, 0116, 0118, 0122, 0625. | 222A     | 494041   | Bracket-Control<br>Used on Type No(s). 0136.      | 474A     | 391529   | Alternator                        |
| 216      | 262766   | Link-Choke   | 232      | 262785   | Spring-Link                                       | 482      | 93621    | Screw-Hex.                        |
| 216A     | 262778   | Link-Choke   | 265      | 221535   | Clamp-Casing                                      | 507      | 398525   | Insulator                         |
| 216B     | 262767   | Link-Choke   | 268      | 65616    | Casing-Wire<br>(72" Long Cut to Required Length)  | 520      | 93722    | Terminal                          |
| 222      | 495611   | Bracket-Control<br>(Choke A Matic®)  | 269      | 26633    | Wire-Control<br>(78" Long Cut to Required Length) | 657      | 93496    | Screw-Slotted Hex.                |
|          |          |  | 270      | 63426    | Locknut-Casing                                    | 663      | 94620    | Screw-Hex.                        |
|          |          |  | 271      | 290568   | Lever-Control                                     | 877      | 393456   | Wire-Alternator<br>(Dual Circuit) |
|          |          |  | 353      | 92791    | Washer-Lock                                       | 877A     | 393814   | Wire-Alternator                   |
|          |          |  | 354A     | 90576    | Nut-Hex.  | 878      | 393362   | Wire-Alternator                   |
|          |          |  | 474      | 393474   | Alternator  | 878A     | 393422   | Harness-Alternator                |
|          |          |  |          |          |   | 878B     | 399916   | Harness-Alternator                |
|          |          |  |          |          |   | 1054     | 280275   | Tie-Cable                         |

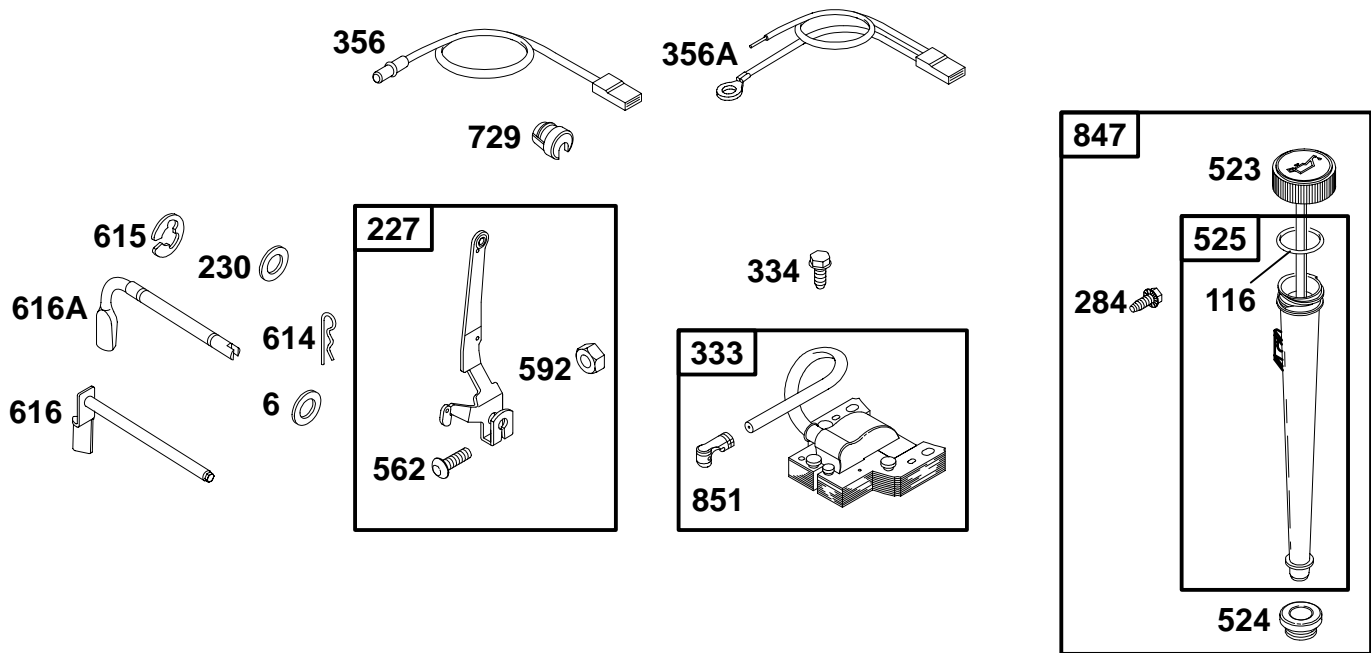
★ Included in Gasket Set-Part Number 494241.

● Included in Carburetor Kit-See Ref. 121.

◆ Included in Carburetor Gasket Set-Part No. 494385.

◊ Included in Valve Overhaul Gasket Set-Part No. 498539.

## 28A700 to 28A799



| REF. NO. | PART NO. | DESCRIPTION      | REF. NO. | PART NO. | DESCRIPTION         | REF. NO. | PART NO. | DESCRIPTION            |
|----------|----------|------------------|----------|----------|---------------------|----------|----------|------------------------|
| 6        | 94927    | Washer           | 356A     | 398808   | Wire-Stop           | 615      | 93307    | Retainer               |
| 116      | ★270920  | Seal-O-Ring      | 523      | 495229   | Dipstick            | 616      | 495157   | Crank-Governor         |
| 227      | 493935   | Lever-Governor   | 524      | ★281370  | Seal-Fill Tube      | 616A     | 231058   | Crank-Governor         |
| 284      | 94073    | Screw-Shoulder   | 525      | 496068   | Tube-Oil Fill       | 729      | 281159   | Clip-Wire              |
| 333      | 492341   | Armature-Magneto | 562      | 94907    | Bolt-Governor Lever | 847      | 496367   | Dipstick/Tube Assembly |
| 334      | 94731    | Screw-Hex.       | 592      | 231978   | Nut-Hex.            | 851      | 493880   | Terminal-Cable         |
| 356      | 494328   | Wire-Stop        | 614      | 93306    | Pin-Cotter          |          |          |                        |

★ Included in Gasket Set-Part Number 494241.

● Included in Carburetor Kit-See Ref. 121.

◆ Included in Carburetor Gasket Set-Part No. 494385.

◊ Included in Valve Overhaul Gasket Set-Part No. 498539.

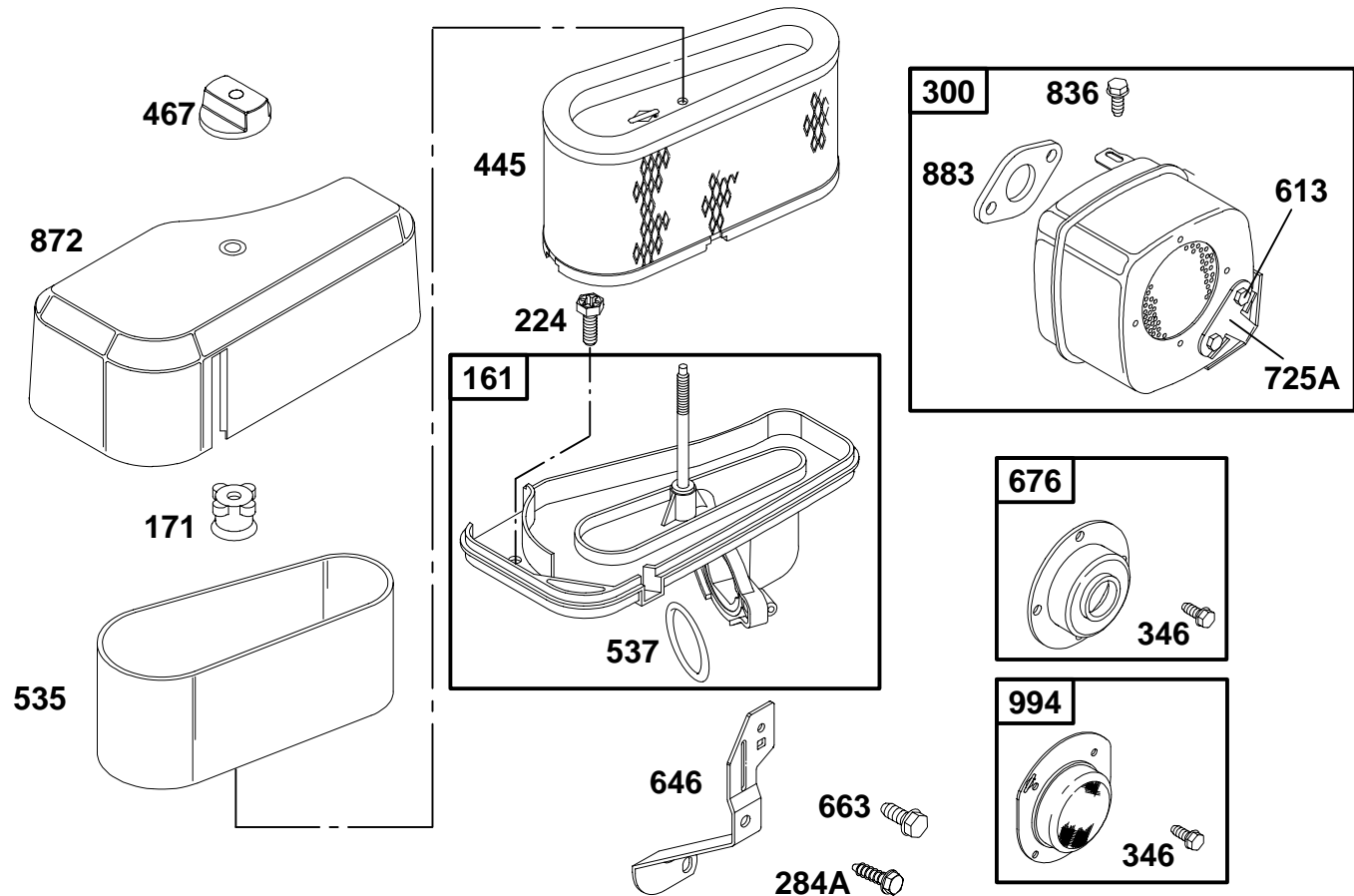
0070-7

Assemblies include all parts shown in frames.

117



## 28A700 to 28A799



| REF. NO. | PART NO. | DESCRIPTION      | REF. NO. | PART NO. | DESCRIPTION        | REF. NO. | PART NO. | DESCRIPTION       |
|----------|----------|------------------|----------|----------|--------------------|----------|----------|-------------------|
| 161      | 496368   | Base—Air Cleaner | 467      | 493903   | Knob               | 676      | 396903   | Deflector—Muffler |
| 171      | 281051   | Nut              | 535      | 272477   | Filter—Air         | 725A     | 223023   | Shield—Heat       |
| 224      | 94729    | Screw—Torx®Hex.  | 537      | Ø★281106 | Gasket—Air Cleaner | 836      | 94513    | Screw—Hex.        |
| 284A     | 94704    | Screw—Hex.       | 613      | 93927    | Screw—Shoulder     | 872      | 281105   | Cover—Air Cleaner |
| 300      | 491413   | Muffler—Exhaust  | 646      | 224546   | Brace              | 883      | Ø★272293 | Gasket—Exhaust    |
| 346      | 93705    | Screw—Hex        | 663      | 94620    | Screw—Hex.         | 994      | 392390   | Arrester—Spark    |
| 445      | 493910   | Filter—Air       |          |          |                    |          |          |                   |

★ Included in Gasket Set—Part Number 494241.

● Included in Carburetor Kit—See Ref. 121.

◆ Included in Carburetor Gasket Set—Part No. 494385.

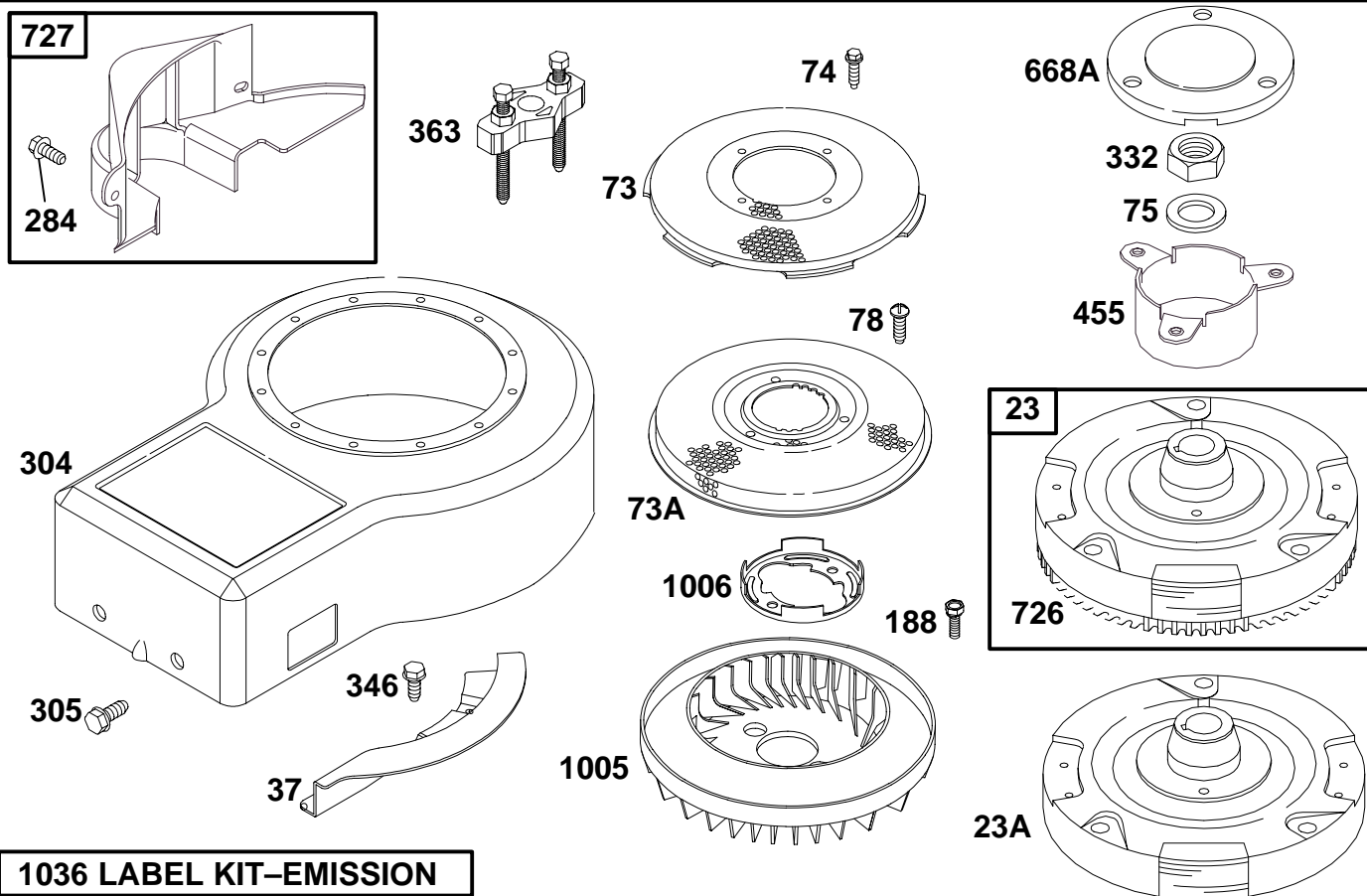
Ø Included in Valve Overhaul Gasket Set—Part No. 498539.

0070-9

Assemblies include all parts shown in frames.

117

## 28A700 to 28A799



### 1036 LABEL KIT-EMISSION

| REF. NO. | PART NO. | DESCRIPTION                               | REF. NO. | PART NO. | DESCRIPTION                             | REF. NO. | PART NO. | DESCRIPTION                     |
|----------|----------|---|----------|----------|---|----------|----------|---------------------------------|
| 23       | 492326   | Flywheel                                  | 74       | 93758    | Screw-Hex.                              | 363      | 19203    | Flywheel Puller                 |
| 23A      | 492135   | Flywheel<br>(For Rewind Starter Engines). | 75       | 224061   | Washer-Flywheel                         | 455      | 222561   | Cup-Flywheel                    |
|          |          |   | 78       | 94626    | Screw-Phillips                          | 668A     | 280848   | Spacer                          |
| 37       | 224502   | Guard-Flywheel                            | 188      | 94627    | Screw-Hex.                              | 726      | 392134   | Gear-Ring                       |
|          |          | <b>Note</b>                               | 284      | 94073    | Screw-Shoulder                          | 727      | 490324   | Cover-Starter Drive             |
|          |          | 494674 Guard-Flywheel                     | 304      | 496319   | Housing-Blower (Black)                  | 1005     | 280687   | Fan-Flywheel                    |
|          |          | Used on Type No(s). 0102.                 | 305      | 94786    | Screw-Hex.                              | 1006     | 224413   | Retainer-Fan                    |
| 73       | 224518   | Screen-Rotating                           | 332      | 92284    | Nut-Flywheel                            | 1036     | 499361   | Label Kit-Emission              |
| 73A      | 224517   | Screen-Rotating                           | 346      | 93705    | Screw-Hex.<br>Used on Type No(s). 0102. |          |          | Used on Type No(s). 0604, 0625. |

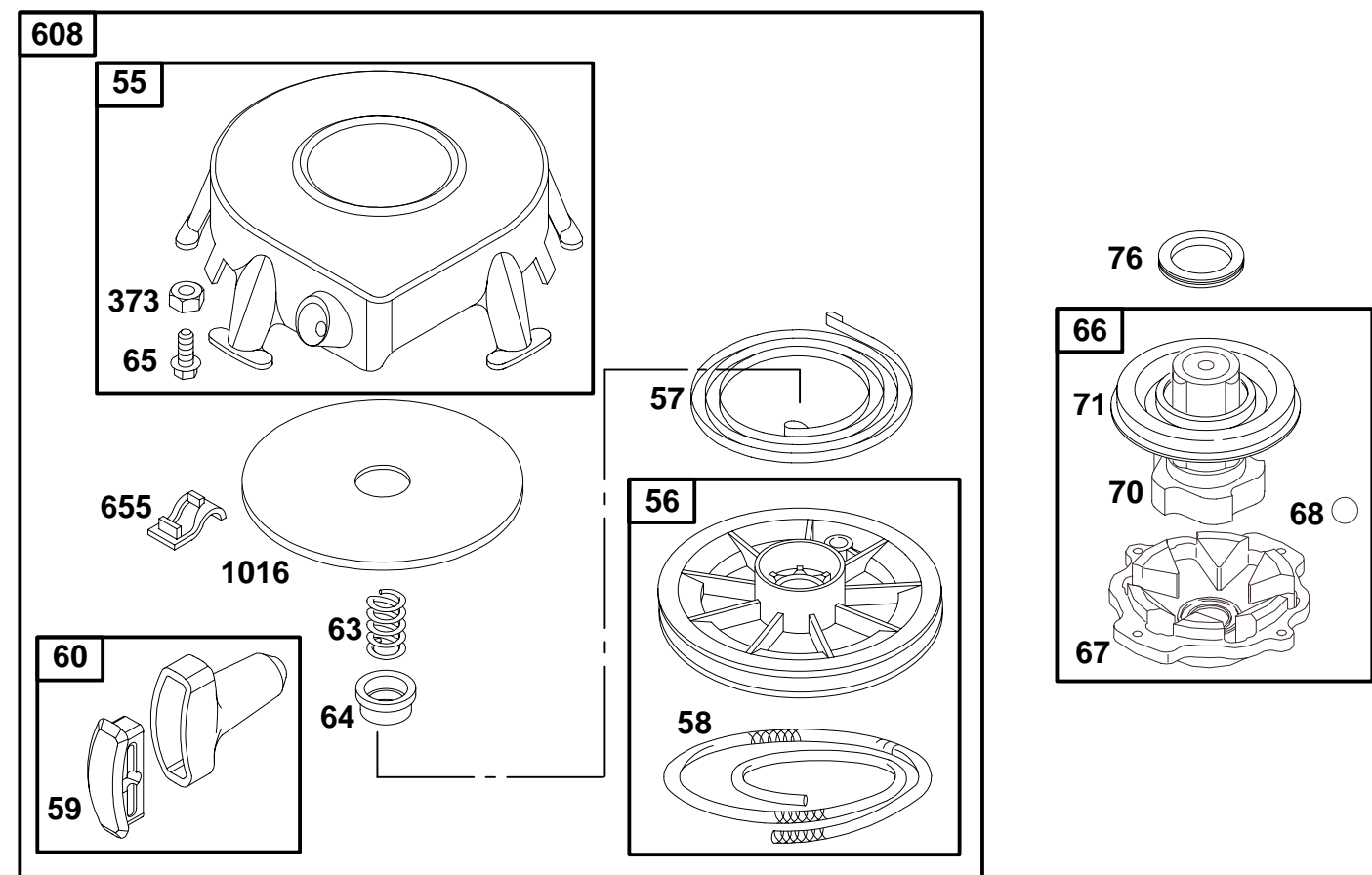
★ Included in Gasket Set-Part Number 494241.

● Included in Carburetor Kit-See Ref. 121.

◆ Included in Carburetor Gasket Set-Part No. 494385.

⊘ Included in Valve Overhaul Gasket Set-Part No. 498539.

## 28A700 to 28A799



| REF. NO. | PART NO. | DESCRIPTION                                   | REF. NO. | PART NO. | DESCRIPTION       | REF. NO. | PART NO. | DESCRIPTION    |
|----------|----------|---|----------|----------|-------------------|----------|----------|----------------|
| 55       | 393576   | Housing-Rewind Starter<br>(Includes 63" Rope) | 60       | 490652   | Grip-Starter Rope | 70       | 298799   | Ratchet-Clutch |
| 56       | 295871   | Pulley-Starter                                | 63       | 260414   | Spring-Ratchet    | 71       | 394506   | Cover-Ratchet  |
| 57       | 490179   | Spring-Rewind Starter                         | 64       | 281204   | Adapter-Spring    | 76       | 68238    | Seal           |
| 58       | 66884    | Rope-Starter<br>(63" Long)                    | 65       | 94128    | Screw-Hex.        | 373      | 92987    | Nut-Hex.       |
| 59       | 490653   | Insert-Grip                                   | 66       | 495970   | Clutch-Starter    | 608      | 390391   | Starter-Rewind |
|          |          |   | 67       | 394897   | Housing-Clutch    | 655      | 222598   | Anchor-Spring  |
|          |          |   | 68       | 63770    | Ball-Clutch       | 1016     | 490817   | Spacer-Rewind  |

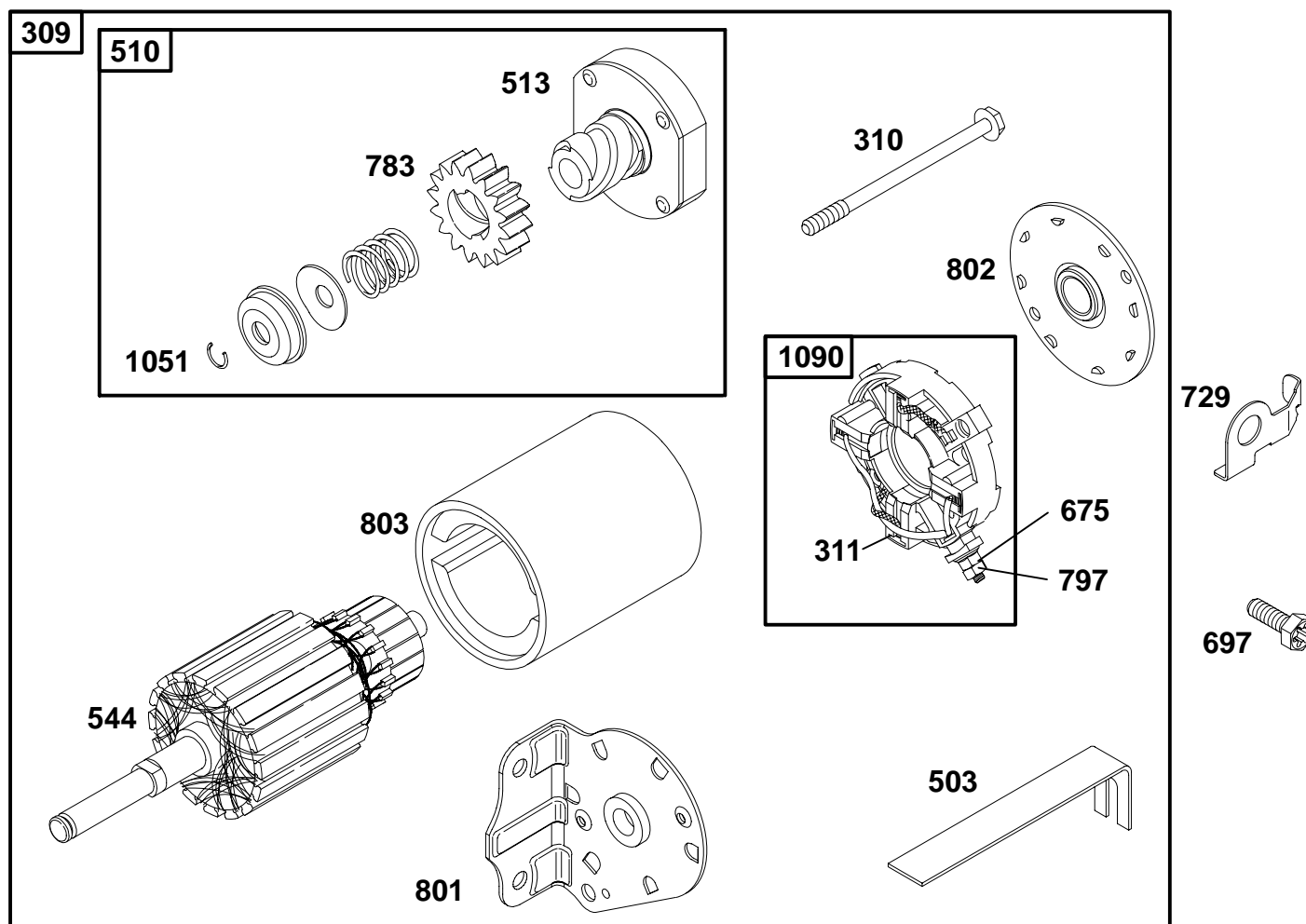
★ Included in Gasket Set-Part Number 494241.

● Included in Carburetor Kit-See Ref. 121.

◆ Included in Carburetor Gasket Set-Part No. 494385.

⊘ Included in Valve Overhaul Gasket Set-Part No. 498539.

## 28A700 to 28A799



| REF. NO. | PART NO. | DESCRIPTION   | REF. NO. | PART NO. | DESCRIPTION                                 | REF. NO. | PART NO. | DESCRIPTION                                |
|----------|----------|---|----------|----------|---|----------|----------|--|
| 309      | 693054   | Motor-Starter<br>(3 5/8" Housing Lgth.)<br>— <b>Note</b> —                | 311      | 497608   | Brush Set                                   | 783      | 693059   | Gear-Starter                               |
|          | 499521   | Motor-Starter<br>(4 3/8" Housing Lgth.)                                   | 503      | 806000   | Strap-Starter                               | 797      | 92278    | Nut<br>(Starter Terminal)                  |
| 310      | 94003    | Bolt<br>(Starter Motor)<br>(For 3 5/8" Housing Length)<br>— <b>Note</b> — | 510      | 497606   | Drive-Starter                               | 801      | 497626   | Cap-Drive                                  |
|          | 95035    | Bolt<br>(Starter Motor)<br>(For 4 3/8" Housing Length)                    | 513      | 398003   | Clutch-Drive                                | 802      | 497607   | Cap-End                                    |
|          |          |   | 544      | 497603   | Armature-Starter<br>(3 5/8" Housing Length) | 803      | 497604   | Housing-Starter<br>(3 5/8" Housing Length) |
|          |          |   | 675      | 225137   | Washer<br>(Starter Motor)                   | 1051     | 263080   | Ring-Retaining                             |
|          |          |   | 697      | 94773    | Screw<br>(Starter Motor Mounting)           | 1090     | 497605   | Retainer-Brush                             |
|          |          |   | 729      | 225170   | Clip-Wire                                   |          |          |  |

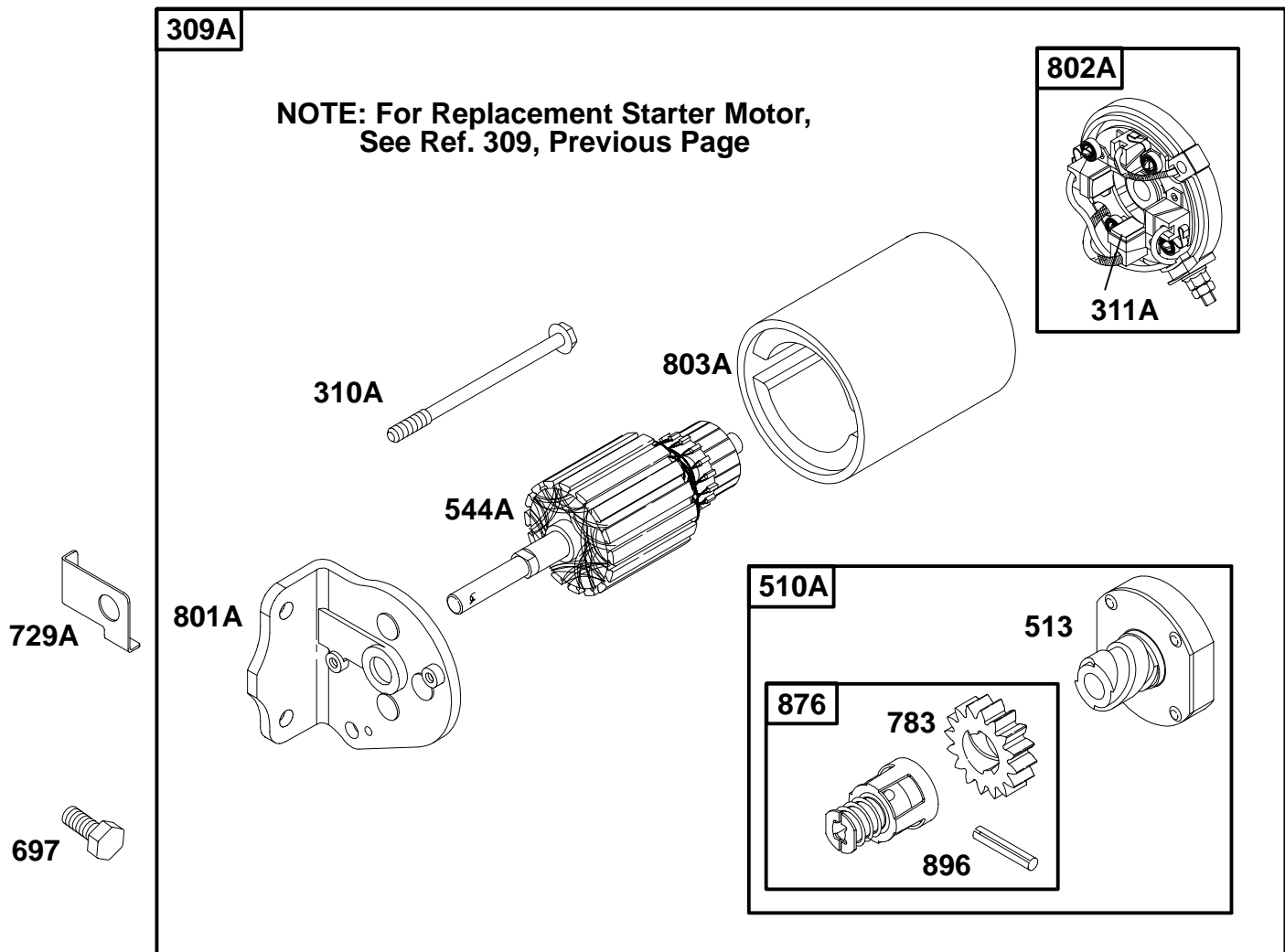
★ Included in Gasket Set—Part Number 494241.

● Included in Carburetor Kit—See Ref. 121.

◆ Included in Carburetor Gasket Set—Part No. 494385.

◊ Included in Valve Overhaul Gasket Set—Part No. 498539.

## 28A700 to 28A799



| REF. NO.    | PART NO.      | DESCRIPTION   | REF. NO.    | PART NO.      | DESCRIPTION  | REF. NO.    | PART NO.      | DESCRIPTION  |
|-------------|---------------|---|-------------|---------------|--|-------------|---------------|--|
| <b>513</b>  | <b>398003</b> | Clutch-Drive  | <b>783</b>  | <b>693059</b> | Gear-Starter   |             |               | Length)  |
| <b>544A</b> | <b>390837</b> | Armature-Starter<br>(For 3 5/8" Housing Length)               | <b>801</b>  | <b>394856</b> | Cap-Drive  | <b>803A</b> | <b>398159</b> | Housing-Starter<br>(For 3 5/8" Housing Length)               |
|             |               | <b>Note</b>   |             |               |  |             |               | <b>Note</b>  |
|             |               | <b>490309</b> Armature-Starter<br>(For 4 3/8" Housing Length) | <b>802A</b> | <b>395537</b> | Cap-End<br>(For 3 5/8" Housing Length)               |             |               | <b>494205</b> Housing-Starter<br>(For 4 3/8" Housing Length) |
| <b>697</b>  | <b>94627</b>  | Screw<br>(Starter Motor Mounting)                             |             |               | <b>Note</b>  | <b>876</b>  | <b>495877</b> | Kit-Gear   |
|             |               |   |             |               | <b>494988</b> Cap-End<br>(For 4 3/8" Housing Length) | <b>896</b>  | <b>94288</b>  | Pin-Roll   |

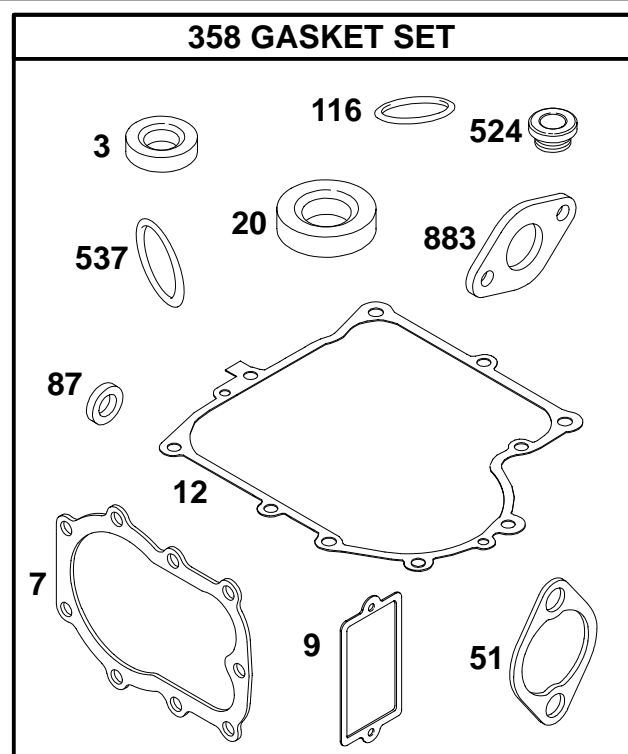
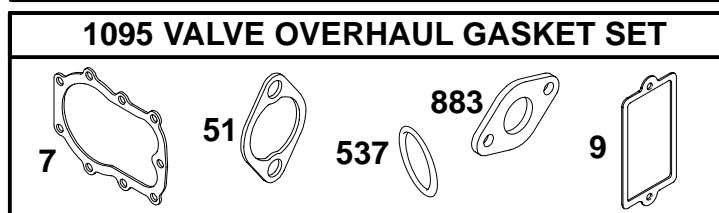
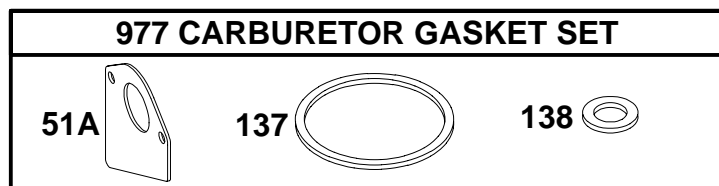
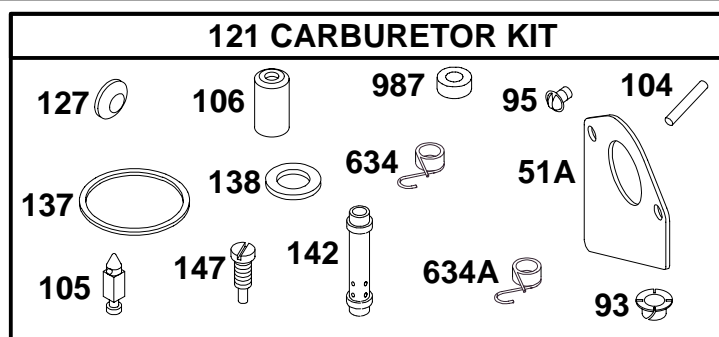
★ Included in Gasket Set-Part Number 494241.

● Included in Carburetor Kit-See Ref. 121.

◆ Included in Carburetor Gasket Set-Part No. 494385.

⊗ Included in Valve Overhaul Gasket Set-Part No. 498539.

## 28A700 to 28A799



| REF. NO. | PART NO. | DESCRIPTION                            | REF. NO. | PART NO. | DESCRIPTION   | REF. NO. | PART NO. | DESCRIPTION                          |
|----------|----------|--|----------|----------|---|----------|----------|--------------------------------------|
| 3        | ★391086  | Seal-Oil                               | 121      | 499220   | Carburetor Kit (LMT 162, 165)   | 147      | ●497472  | Jet-Pilot (LMT 63, 66, 97, 100)      |
| 7        | Ø★271866 | Gasket-Cylinder Head                   |          |          | <b>Note</b>   | 358      | 494241   | Gasket Set                           |
| 9        | Ø★27803  | Gasket-Breather                        |          |          | 499231 Carburetor Kit (LMT 166)   | 524      | ★281370  | Seal-Fill Tube                       |
| 12       | ★271916  | Gasket-Crankcase (.015" Thick)         |          |          | 497481 Carburetor Kit (Used Before Code Date 96072600). Plug-Welch (Sold in Kit Only) | 537      | Ø★281106 | Gasket-Air Cleaner                   |
|          |          | <b>Note</b>                            |          |          |   | 634      | ●494453  | Seal-Spring Assembly (Manual Choke)  |
|          |          | ★271997 Gasket-Crankcase (.005" Thick) | 127      | ●        |   | 634A     | ●494455  | Seal-Spring Assembly (Choke A Matic) |
|          |          | ★271996 Gasket-Crankcase (.009" Thick) | 137      | ●★281165 | Gasket-Float Bowl   | 883      | Ø★272293 | Gasket-Exhaust                       |
| 20       | ★291675  | Seal-Oil                               | 138      | ●★281164 | Washer  | 977      | 494385   | Gasket Set-Carb.                     |
| 51       | Ø★272554 | Gasket-Intake                          | 142      | ●499037  | Nozzle-Carburetor (Standard-LMT 162, 165)   | 987      | ●281166  | Seal-Throttle Shaft                  |
| 51A      | ●★272465 | Gasket-Intake                          |          |          | <b>Note</b>   | 1095     | 498539   | Gasket Set-Valve Overhaul            |
| 87       | ★491323  | Seal-Governor Shaft                    |          |          | ●499039 Nozzle-Carb. (Standard-LMT 166)   |          |          |                                      |
| 93       | ●281346  | Bushing-Throttle Shaft                 |          |          | ●497568 Nozzle-Carb. (Standard-LMT 97, 100)   |          |          |                                      |
| 95       | ●94098   | Screw-Choke/Throttle                   |          |          | ●496519 Nozzle-Carb. (Standard-LMT 63, 66)  |          |          |                                      |
| 104      | ●231789  | Pin-Float Hinge                        |          |          | ●497860 Nozzle-Carb. (Standard-LMT 108, 133, 136)                                     |          |          |                                      |
| 105      | ●231855  | Valve-Needle                           |          |          | ●498545 Nozzle-Carb. (Standard-LMT 111)   |          |          |                                      |
| 106      | ●231854  | Seat-Inlet                             |          |          |   |          |          |                                      |
| 116      | ★270920  | Seal-O-Ring                            |          |          |   |          |          |                                      |

★ Included in Gasket Set-Part Number 494241.

● Included in Carburetor Kit-See Ref. 121.

◆ Included in Carburetor Gasket Set-Part No. 494385.

Ø Included in Valve Overhaul Gasket Set-Part No. 498539.