

286700 to 286799

Illustrated Parts List

Model Series

286700 to 286799

TYPE NUMBERS

0102, 0103,
0111 through 0119,
0120 through 0129,
0130 through 0139,
0140 through 0149,
0150 through 0159,
0160 through 0169,
0170 through 0179,
0182 through 0190,
0401 through 0425,
0437, 0438, 0439,
0441, 0442, 0443,
0450 through 0455,
0604, 0622, 0634,

TYPE NUMBERS

1015 through 1029,
1102, 1103, 1107,
1122, 1137, 1139,
1141, 1152, 1160,
1162, 1172,
1182 through 1199,
1200, 1202,
1424, 1425, 4015,
4016,
4020 through 4031,
4515, 4516
4520 through 4529.

TO FIND

THE CORRECT NUMBER OF THE PART YOU NEED: FOLLOW THE INSTRUCTIONS BELOW

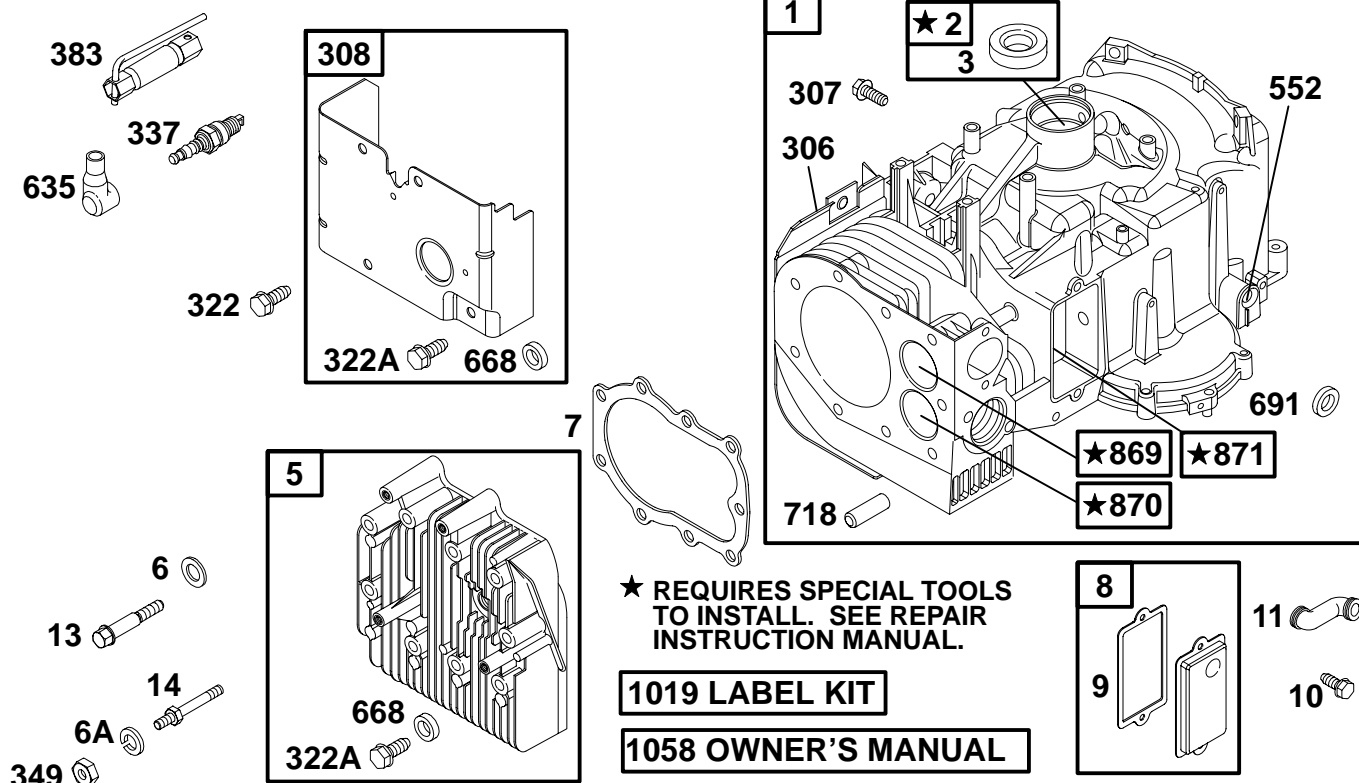
- A. Refer to Engine Model, Type and Code Number that is stamped on the blower housing of engine. Engine type numbers such as 0123 01 are listed only as 0123 in most instances. The two digits (01 or 02, etc.) to the right of the space may be required for more accurate parts identification in some instances. Select the Illustrated Parts List covering the correct Model Series and Type Number.
- B. Refer to the Illustrations and compare the original part with Illustration. The number next to the illustration is the Reference Number. Assemblies include all parts shown in frames. All parts shown in assembly frames having individual reference numbers can be purchased separately.
- C. After the Reference Number has been identified, refer to the Numerical text, where Reference and Primary Part Number are listed. **THE PRIMARY PART IS USED ON ALL TYPE NUMBERS EXCEPT THOSE TYPE NUMBERS UNDER "NOTE."**
- D. If a "Note" appears below the Primary Part Number, it means that this part differs from the Primary Part for certain types. If your Type number is listed under "Note," order the part referred to at the "Note."
- E. If your Engine Type Number does not appear after any part number listed under "Note," use the Primary Part Number.
- F. For Engine Type Numbers not covered by this book, check other Parts Lists having the same engine model or contact your source of supply.

PRINTED IN U.S.A.



COPYRIGHT by BRIGGS & STRATTON CORPORATION
All rights reserved. No part of this material may be reproduced or transmitted, in any form or by any means, electronic or mechanical, including photocopying, recording or by any information storage and retrieval system, without permission in writing from Briggs & Stratton Corporation.

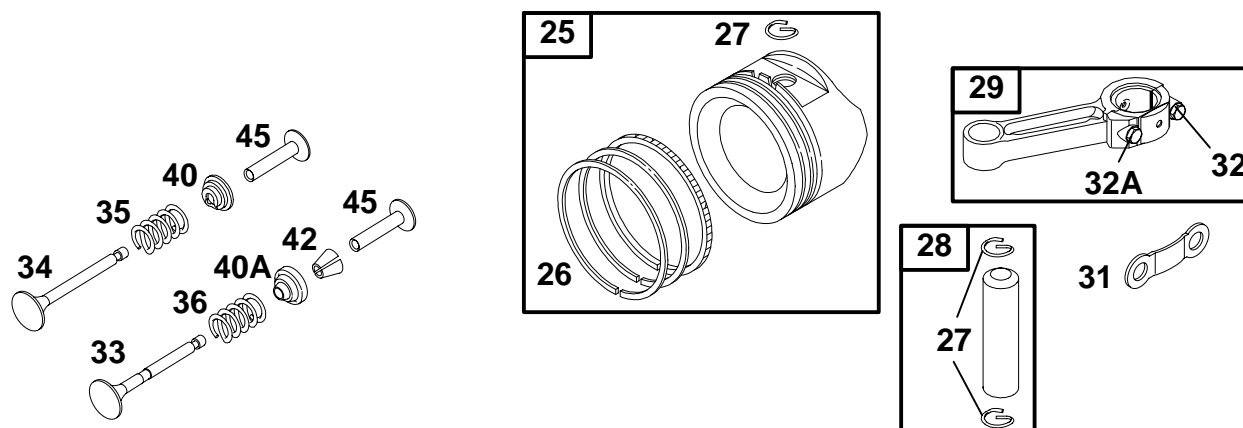
286700 to 286799



REF. NO.	PART NO.	DESCRIPTION	REF. NO.	PART NO.	DESCRIPTION	REF. NO.	PART NO.	DESCRIPTION
1	496413	Cylinder Assembly	10	691666	Screw (Breather Assembly)	552	491986	Bushing-Governor Crank
2	399265	Kit-Bushing/Seal (Magneto Side)	11	280100	Tube-Breather (Used After Code Date 98091300).	635	66538	Boot-Sparkplug
3	★391086	Seal-Oil (Magneto Side)	13	94622	Screw (Cylinder Head)	668	690510	Spacer
5	494240	Head-Cylinder	14	691109	Stud (Cylinder Head) (Used in Position #5 and #6)	691	★491323	Seal-Governor Shaft
6	691261	Washer (Cylinder Head)	306	690459	Shield-Cylinder	718	230192	Pin-Locating
6A	691075	Washer (Cylinder Head)	307	94930	Screw (Cylinder Shield)	869	261463	Seat-Valve (Intake)
7	★Ø271866	Gasket-Cylinder Head	308	491490	Cover-Cylinder Head	870	262924	Seat-Valve (Exhaust)
8	495735	Breather Assembly	322	94786	Screw (Cylinder Head Cover)	871	261961	Bushing-Valve Guide (Exhaust)
Note			322A	94881	Screw (Cylinder Head Cover)	Note		
495734 Breather Assembly			337	802592	Sparkplug	231218 Bushing-Valve Guide (Intake)(Brass)		
Used on Type No(s). 0137, 0153, 0155, 0166, 0184, 0190, 0416, 0425, 0450, 1137, 1184, 1190, 1425, 4020, 4520.			349	691105	Nut (Cylinder Head Cover)	1019	491255	Kit-Label
9	★Ø27803	Gasket-Breather	383	89838	Wrench-Sparkplug	1058	274787	Owner's Manual (Emission Engines)
						Note		
						272697 Owner's Manual (Non Emission Engines)		

★ Included in Engine Gasket Set-Ref. No. 358
 Ø Included in Valve Gasket Set-Ref. No. 1095

● Included in Carburetor Overhaul Kit-Ref. No. 121
 ◆ Included in Carburetor Gasket Set-Ref. No. 977

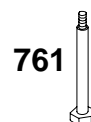
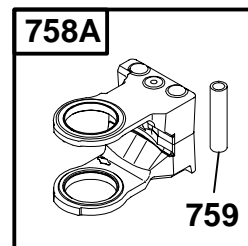
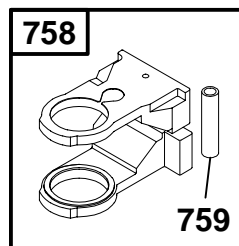
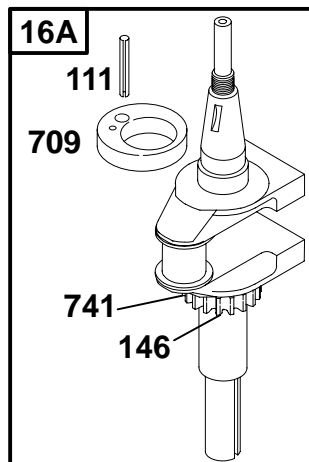
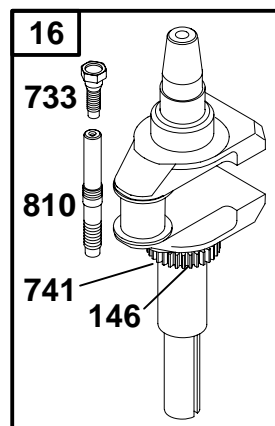


REF. NO.	PART NO.	DESCRIPTION	REF. NO.	PART NO.	DESCRIPTION	REF. NO.	PART NO.	DESCRIPTION
25	499282	Piston Assembly (Standard) ———— Note ——— 499288 Piston Assembly (.010" O.S.) 499292 Piston Assembly (.020" O.S.) 499296 Piston Assembly (.030" O.S.)	27	691299	Lock-Piston Pin (Used After Code Date 95101500). ———— Note ——— 260924 Lock-Piston Pin (Used Before Code Date 95101600).	29	494504	Rod-Connecting (Standard) ———— Note ——— 495490 Rod-Connecting (.020" Undersize)
26	391780	Ring Set (Standard) ———— Note ——— 392331 Ring Set (Standard Chrome) 499997 Ring Set (.010" O.S.) 499998 Ring Set (.020" O.S.) 499999 Ring Set (.030" O.S.)	28	498319	Pin-Piston (Standard) (Used After Code Date 95101500). ———— Note ——— 299691 Pin-Piston (Standard) (Used Before Code Date 95101600). 498320 Pin-Piston (.005" O.S.) (Used After Code Date 95101500). 391286 Pin-Piston (.005" O.S.) (Used Before Code Date 95101600).	31	222299	Rod Screw Lock
						32	690356	Screw (1 7/8" Long) (Connecting Rod)
						32A	690348	Screw (1 5/8" Long) (Connecting Rod)
						33	262246	Valve-Exhaust
						34	262247	Valve-Intake
						35	65906	Spring-Valve (Intake)
						36	26828	Spring-Valve (Exhaust)
						40	221596	Retainer-Valve (Intake)
						40A	292260	Retainer-Valve (Exhaust)
						42	494553	Keeper-Valve
						45	262248	Tappet-Valve

★ Included in Engine Gasket Set-Ref. No. 358
 ∅ Included in Valve Gasket Set-Ref. No. 1095

● Included in Carburetor Overhaul Kit-Ref. No. 121
 ◆ Included in Carburetor Gasket Set-Ref. No. 977

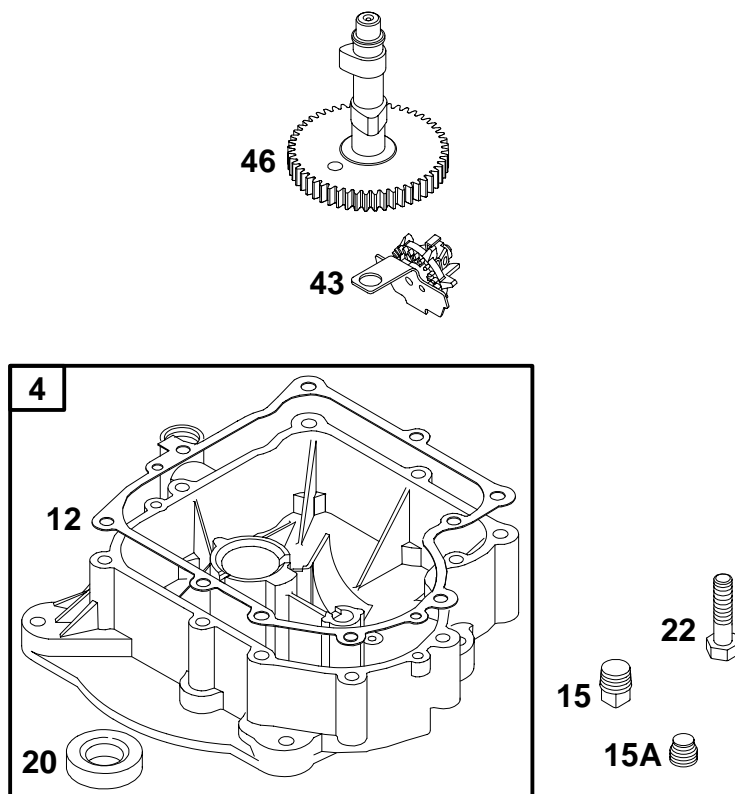
286700 to 286799



REF. NO.	PART NO.	DESCRIPTION	REF. NO.	PART NO.	DESCRIPTION	REF. NO.	PART NO.	DESCRIPTION
16	693944	Crankshaft (Used After Code Date 95073100).	24	222698	Key-Flywheel	757	213998	Link-Counterweight
		Note	111	691679	Pin-Retainer	758	399891	Counterweight
		498971 Crankshaft (Used Before Code Date 95080100).	146	94196	Key-Timing	758A	692423	Counterweight
16A	496784	Crankshaft	357	91540	Key-Drive Pulley	759	691239	Pin-Counterweight
			709	262243	Eccentric	761	691096	Screw (Counterweight)
			733	94673	Screw (Crankshaft Extension)	810	231828	Extension-Crankshaft
			741	691284	Gear-Timing			

★ Included in Engine Gasket Set-Ref. No. 358
 ∅ Included in Valve Gasket Set-Ref. No. 1095

● Included in Carburetor Overhaul Kit-Ref. No. 121
 ◆ Included in Carburetor Gasket Set-Ref. No. 977

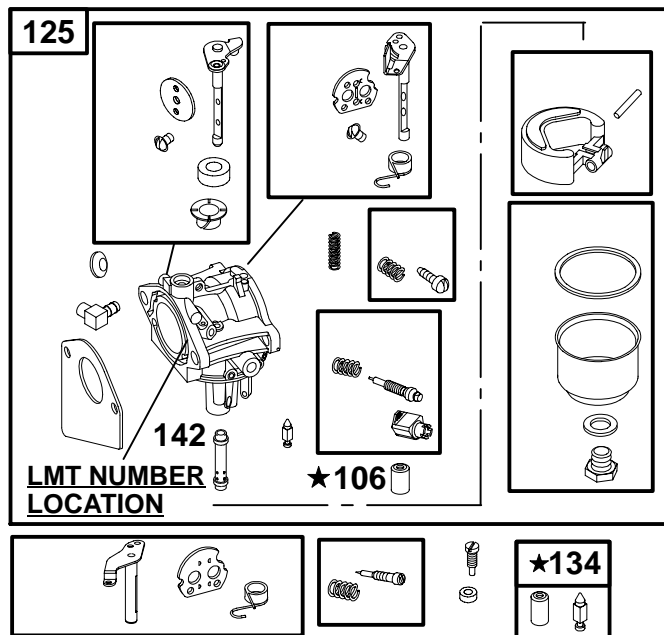


REF. NO.	PART NO.	DESCRIPTION	REF. NO.	PART NO.	DESCRIPTION	REF. NO.	PART NO.	DESCRIPTION
4	494238	Sump-Engine	15	94239	Plug-Oil Drain	22	692125	Screw
12	★271916	Gasket-Crankcase (.015" Standard)	15A	690341	Plug-Oil Drain			(Crankcase Cover/ Sump)
		Note	20	★291675	Seal-Oil (PTO Side)	43	490815	Slinger-Governor/Oil
		★271997 Gasket-Crankcase (.005")				46	212897	Camshaft
		★271996 Gasket-Crankcase (.009")						

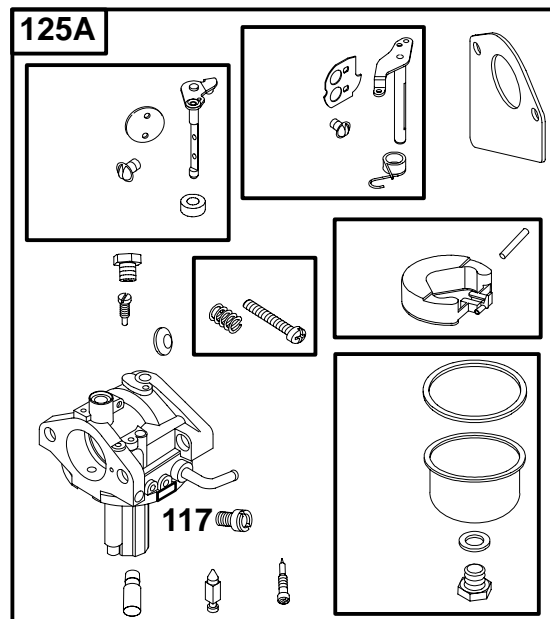
★ Included in Engine Gasket Set-Ref. No. 358
 ∅ Included in Valve Gasket Set-Ref. No. 1095

● Included in Carburetor Overhaul Kit-Ref. No. 121
 ◆ Included in Carburetor Gasket Set-Ref No. 977

286700 to 286799



SEE NEXT PAGE FOR COMPONENT SERVICE



★ REQUIRES SPECIAL TOOLS TO INSTALL. SEE REPAIR INSTRUCTION MANUAL.

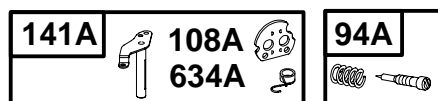
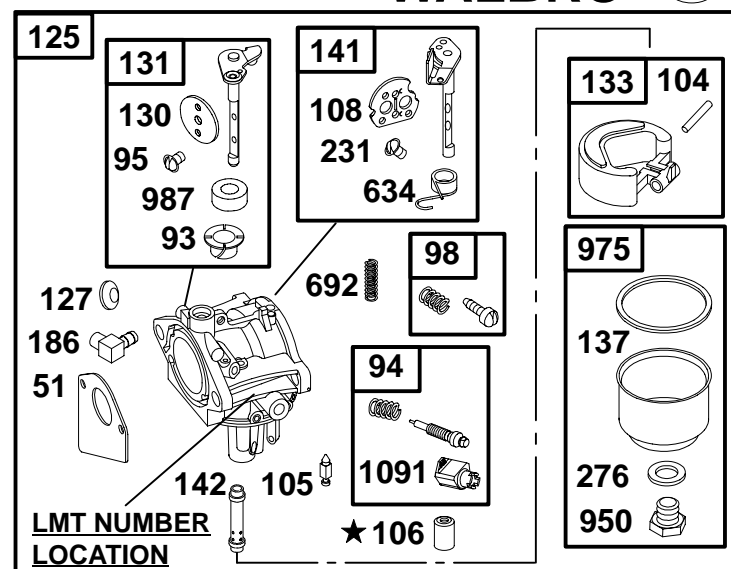
REF. NO.	PART NO.	DESCRIPTION	REF. NO.	PART NO.	DESCRIPTION	REF. NO.	PART NO.	DESCRIPTION
50	213819	Manifold-Intake			<div>———— Note ————</div> 499158 Carburetor (Pump Feed) (Choke A Matic and Manual Choke) (Used After Code Date 96072500). Used on Type No(s). 0137, 0153, 0155, 0166, 0184, 0190, 0425, 4020, 4520.	142	●691434	Nozzle-Carburetor (Standard) (LMT 92, 93, 94, 96)
51A	★Ø272554	Gasket-Intake						<div>———— Note ————</div> ●691425 Nozzle-Carburetor (Standard) (LMT 1, 2, 3, 4, 5, 7, 37, 38, 39, 40, 41, 77, 78, 79, 80, 81, 157, 158, 159, 160)
53	691098	Stud (Carburetor)						
54	94913	Screw (Intake Manifold)						
106	●231854	Seat-Inlet (Gravity Feed) (Used After Code Date 92071900).						
		<div>———— Note ————</div> ●280328 Seat-Inlet (Gravity Feed) (Used Before Code Date 92072000).						
		<div>———— Note ————</div> ●231856 Seat-Inlet (Pump Feed) (Used After Code Date 92071900).	125A	694941	Carburetor (Nikki)			497737 Nozzle-Carburetor (High Altitude) (LMT 92, 93, 94, 96)
			134	●494788	Kit-Needle/Seat (Gravity Feed) (Used Before Code Date 92072000).			497567 Nozzle-Carburetor (High Altitude) (LMT 1, 2, 3, 4, 5, 7, 37, 38, 39, 40, 41, 77, 78, 79, 80, 81, 157, 158, 159, 160)
					<div>———— Note ————</div> 398188 Kit-Needle/Seat (Pump Feed) (Used Before Code Date 92072000).			
117	●690880	Main Jet						
		<div>———— Note ————</div> ●694925 Jet-Main (High Altitude)						
125	498027	Carburetor (Walbro) (Gravity Feed)						

★ Included in Engine Gasket Set-Ref. No. 358
Ø Included in Valve Gasket Set-Ref. No. 1095

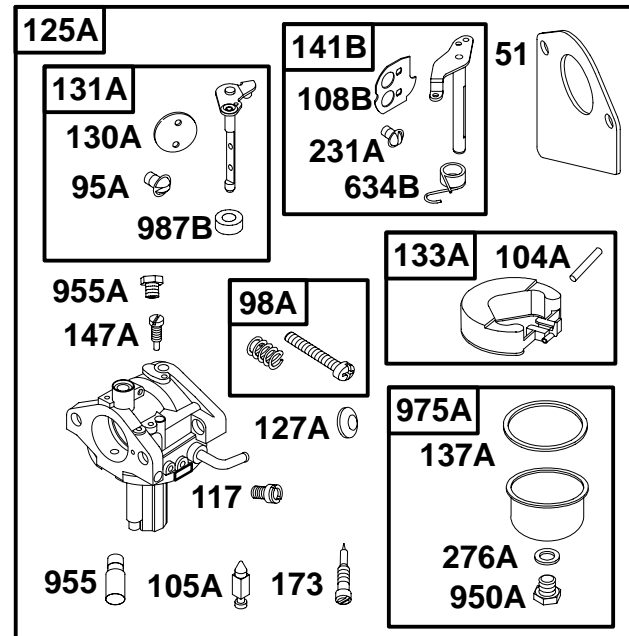
● Included in Carburetor Overhaul Kit-Ref. No. 121
◆ Included in Carburetor Gasket Set-Ref. No. 977

★ **REQUIRES SPECIAL TOOLS
TO INSTALL. SEE REPAIR
INSTRUCTION MANUAL.**

WALBRO



NIKKI

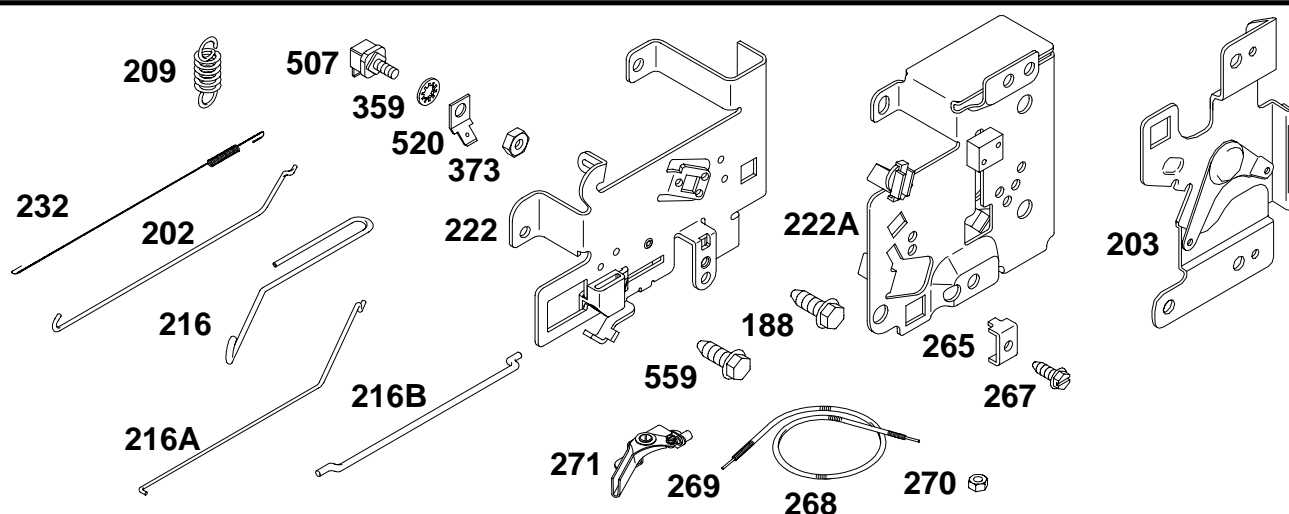


REF. NO.	PART NO.	DESCRIPTION	REF. NO.	PART NO.	DESCRIPTION	REF. NO.	PART NO.	DESCRIPTION
51	♦♦272465	Gasket-Intake	125A		Carburetor (Nikki)	147	♦♦497472	Jet-Pilot
93	690602	Bushing-Throttle Shaft			(See Previous Page)			(LMT 1, 2, 3, 4, 5, 7, 37, 38, 39, 40, 41, 77, 78, 79, 80, 81).
94	498030	Kit-Idle Mixture	127	♦♦695005	Plug-Welch	147A	♦♦694927	Jet-Pilot
94A	494383	Kit-Idle Mixture	127A	♦♦694916	Plug-Welch	173	694926	Valve-Idle Mixture
95	♦♦94098	Screw (Throttle Valve)	130	224539	Valve-Throttle	186	493496	Connector-Hose
95A	♦♦690718	Screw (Throttle Valve)	130A	694917	Valve-Throttle	231	♦♦94098	Screw (Choke Valve)
98	495800	Kit-Idle Speed	131	494379	Kit-Throttle Shaft	231A	♦♦690718	Screw (Choke Valve)
98A	694907	Kit-Idle Speed	131A	694909	Kit-Throttle Shaft	276	♦♦281164	Washer-Sealing
104	♦♦690525	Pin-Float Hinge	133	494381	Float-Carburetor	276A	♦♦690997	Washer-Sealing
104A	♦♦694918	Pin-Float Hinge	133A	694914	Carburetor Float	634	♦♦690801	Spring/Seal Assembly
105	♦♦231855	Valve-Float Needle (Used After Code Date 92071900).	137	♦♦281165	Gasket-Float Bowl	634A	♦♦690802	Spring/Seal Assembly
105A	♦♦694922	Valve-Float Needle	137A	♦♦694920	Gasket-Float Bowl	634B	♦♦694912	Spring/Seal Assembly
106		Seat-Inlet (See Previous Page)	141	495097	Kit-Choke Shaft (Manual Choke) (Used After Code Date 92091400).	692	262820	Spring-Detent
108	690464	Valve-Choke (Manual Choke)			Note	950	94642	Screw-Float Bowl
108A	692344	Valve-Choke (Choke A Matic)			494380 Kit-Choke Shaft (Choke A Matic) (Used Before Code Date 92091500).	950A	694919	Screw-Float Bowl
108B	694923	Valve-Choke	141A	495931	Kit-Choke Shaft (Choke A Matic)	955	♦♦694924	Plug-Carburetor
117	•	Jet-Main (See Previous Page)	141B	694913	Kit-Choke Shaft	955A	694921	Plug-Carburetor
125		Carburetor (Walbro) (See Previous Page)	142		Nozzle-Carburetor (See Previous Page)	975	495933	Bowl-Float
						975A	694908	Bowl-Float
						987	♦♦691326	Seal-Throttle Shaft
						987A	♦♦692001	Seal-Throttle Shaft (LMT 1 thru 5, 7, 37 thru 41)
						987B	♦♦690998	Seal-Throttle Shaft
						1091	691333	Cap-Limiter

★ Included in Engine Gasket Set-Ref. No. 358
 ∅ Included in Valve Gasket Set-Ref. No. 1095

• Included in Carburetor Overhaul Kit-Ref. No. 121
 ♦ Included in Carburetor Gasket Set-Ref. No. 977

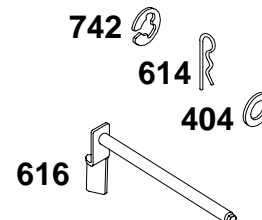
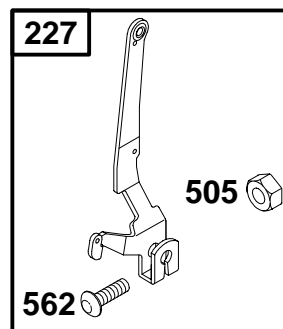
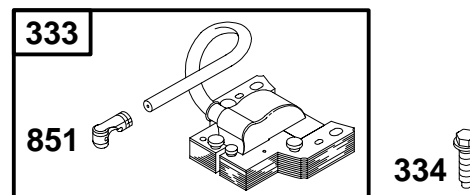
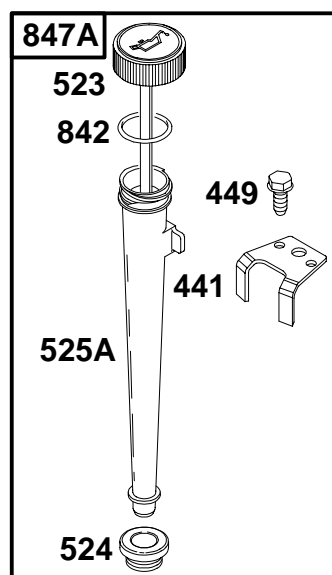
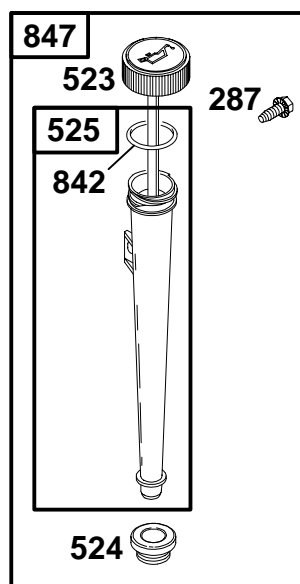
286700 to 286799



REF. NO.	PART NO.	DESCRIPTION	REF. NO.	PART NO.	DESCRIPTION	REF. NO.	PART NO.	DESCRIPTION
188	94929	Screw (Control Bracket)		261126	Spring—Governor Used on Type No(s). 0184, 0185, 0422, 1184, 1185.	216	262766	Link—Choke
202	262767	Link—Mechanical Governor		261306	Spring—Governor Used on Type No(s). 0115, 0120, 0122, 0124, 0136, 0141, 0144, 0151, 0152, 0166, 0173, 0186, 0413, 0414, 0416, 0417, 0622, 1021, 1025, 1026, 1028, 1029, 1122, 1141, 1152, 1186, 4020, 4021, 4025, 4026, 4028, 4029, 4520, 4521, 4525, 4526, 4528, 4529.	216A	690574	Link—Choke
203	691381	Crank—Bell		690576	Spring—Governor Used on Type No(s). 0118, 0126, 0176, 0182, 0187, 0418, 0419, 0423, 1182, 1187.	216B	691281	Link—Choke
209	691278	Spring—Governor				222	694042	Bracket—Control (Used After Code Date 99010700).
	Note						Note	
	260695	Spring—Governor Used on Type No(s). 0129, 0137, 0138, 0146, 0149, 0150, 0155, 0157, 0159, 0160, 0161, 0162, 0163, 0164, 0167, 0169, 0172, 0424, 0425, 1137, 1160, 1162, 1172, 1194, 1425, 4027, 4527.				222A	494041	Bracket—Control (Used Before Code Date 99010800).
	260871	Spring—Governor Used on Type No(s). 0102, 0103, 0114, 0116, 0119, 0130, 0131, 0134, 0140, 0147, 0177, 0183, 0401, 0403, 0411, 0412, 0420, 0437, 0438, 0439, 0441, 0442, 0443, 0450, 0452, 0453, 0454, 0455, 0604, 0634, 1103, 1107, 1183, 1197, 1198, 1200, 1202.				232	262785	Spring—Governor Link
						265	221535	Clamp—Casing
						267	94906	Screw (Casing Clamp)
						268	65616	Casing—Control Wire (Cut to Length)
						269	26633	Wire—Control (Cut to Length)
						270	63426	Nut (Control Wire Casing)
						271	290568	Lever—Control
						359	691077	Washer (Ground Terminal)
						373	90576	Nut (Ground Terminal)
						507	398525	Insulator
						520	691084	Terminal—Ground
						559	94896	Screw (Remote Choke Stop)

★ Included in Engine Gasket Set—Ref. No. 358
 ∅ Included in Valve Gasket Set—Ref. No. 1095

● Included in Carburetor Overhaul Kit—Ref. No. 121
 ◆ Included in Carburetor Gasket Set—Ref. No. 977

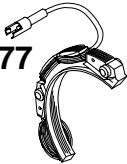

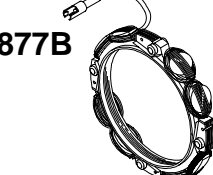
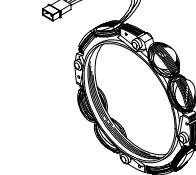

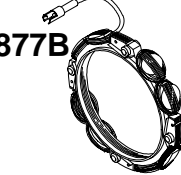
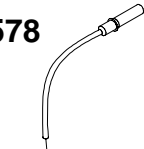
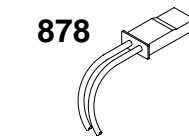
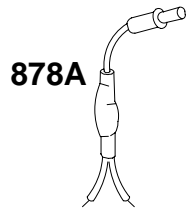

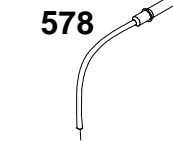
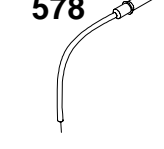
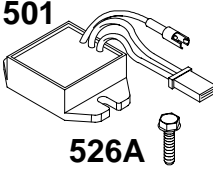
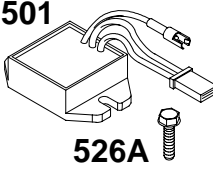
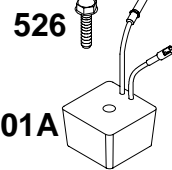


REF. NO.	PART NO.	DESCRIPTION	REF. NO.	PART NO.	DESCRIPTION	REF. NO.	PART NO.	DESCRIPTION
227	691374	Lever-Governor Control	505	691251	Nut (Governor Control Lever)	614	93306	Pin-Cotter
287	94903	Screw (Dipstick Tube)	523	495230	Dipstick	616	495157	Crank-Governor
333	492341	Armature-Magneto	524	★281370	Seal-Dipstick Tube	742	93307	Retainer-E Ring
334	94731	Screw (Magneto Armature)	525	691398	Tube-Dipstick	842	★270920	O-Ring Seal
404	94927	Washer (Governor Crank)	525A	495768	Tube-Dipstick	847	496415	Dipstick/Tube Assembly
441	224390	Bracket-Oil Fill	562	691119	Bolt (Governor Control Lever)	847A	490474	Dipstick/Tube Assembly
449	94874	Screw (Oil Fill Bracket)				851	493880	Terminal-Sparkplug

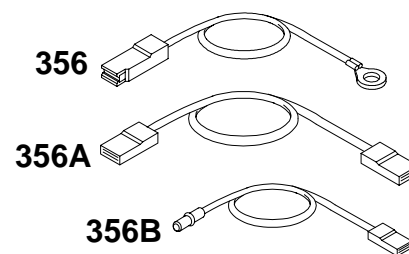
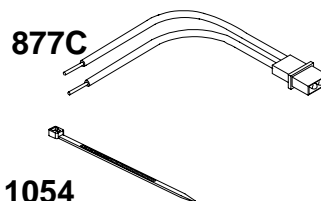
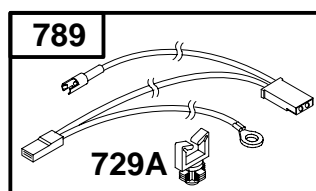
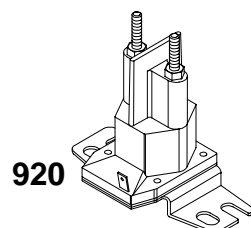
★ Included in Engine Gasket Set-Ref. No. 358
 ∅ Included in Valve Gasket Set-Ref. No. 1095

● Included in Carburetor Overhaul Kit-Ref. No. 121
 ◆ Included in Carburetor Gasket Set-Ref. No. 977

286700 to 286799

DC ONLY	DUAL CIRCUIT	TRI-CIRCUIT	10 AMP	16 AMP	9 AMP
SEE FLYWHEEL ASSEMBLY	SEE FLYWHEEL ASSEMBLY	SEE FLYWHEEL ASSEMBLY	SEE FLYWHEEL ASSEMBLY	SEE NOTE UNDER FLYWHEEL ASSEMBLY	SEE NOTE UNDER FLYWHEEL ASSEMBLY
474 	474A 	474B 	474C 	474C 	474B 
578 	878 	878A 	578 	578 	578 
			501  526A	501  526A	526  501A

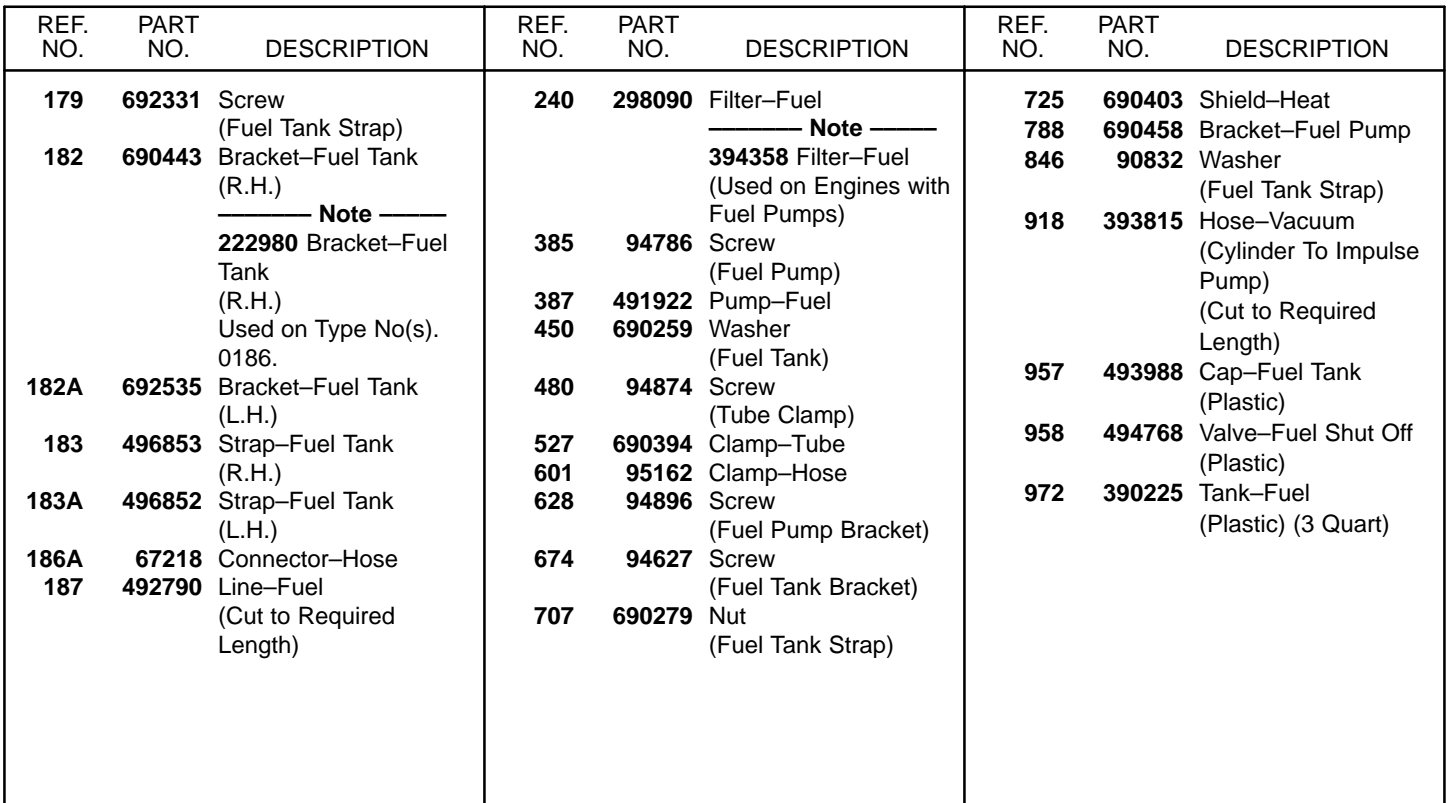
NOTE: ALL ALTERNATORS USE REF. NO. 1119 MOUNTING SCREW 



REF. NO.	PART NO.	DESCRIPTION	REF. NO.	PART NO.	DESCRIPTION	REF. NO.	PART NO.	DESCRIPTION
356	398808	Wire-Stop	578	393422	Wire Assembly	878	393362	Harness-Alternator
356A	690799	Wire-Stop	729A	691335	Clip-Wire	878A	392606	Harness-Alternator
356B	690807	Wire-Stop			(Wiring Harness)	920	807829	Solenoid-Starter
474	391529	Alternator	789	497708	Harness-Wiring	1054	280275	Tie-Cable
474A	393474	Alternator	877	393814	Wire/Connector-Alternator	1119	93621	Screw (Alternator)
474B	392595	Alternator	877A	393456	Wire/Connector-Alternator			
474C	393295	Alternator	877B	393537	Wire/Connector-Alternator			
501	394890	Regulator	877C	399916	Wire/Connector-Alternator			
501A	491546	Regulator						
526	690326	Screw (Regulator)						
526A	94786	Screw (Regulator)						

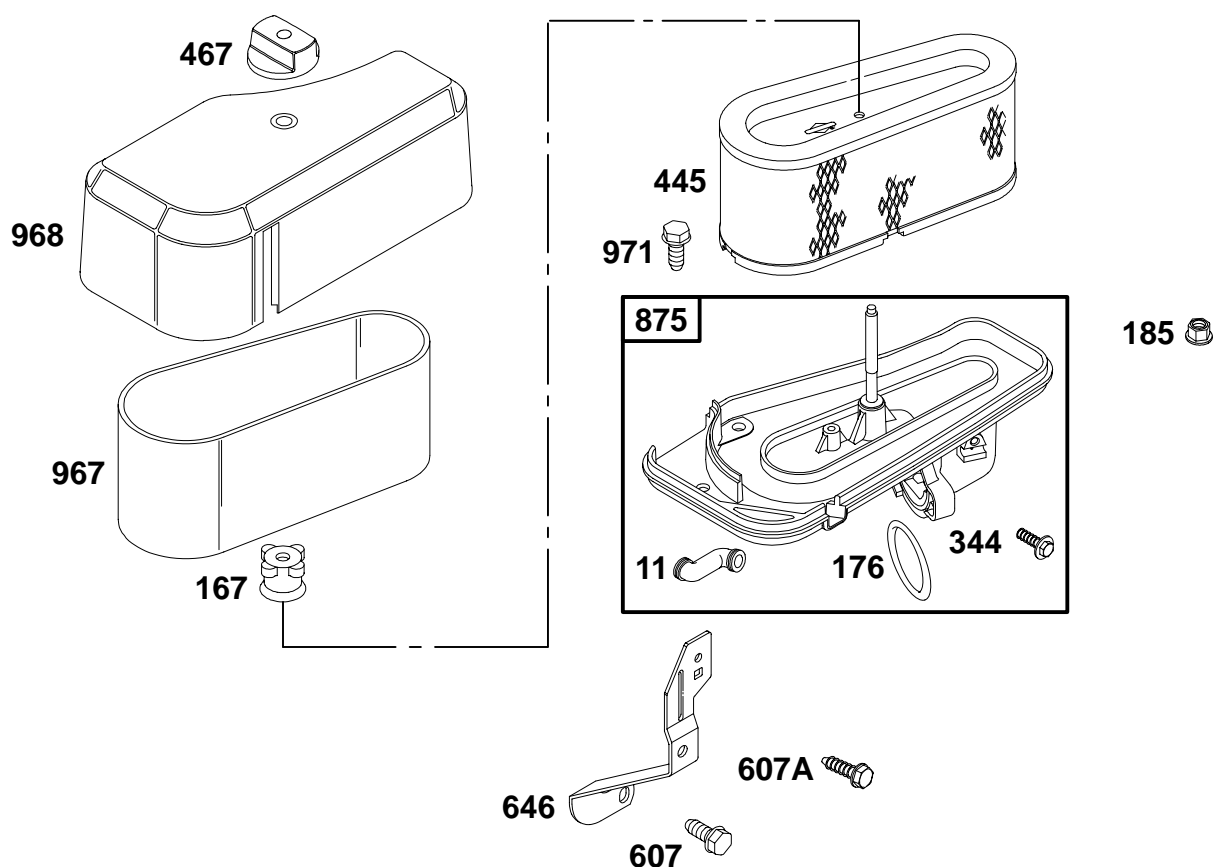
★ Included in Engine Gasket Set-Ref. No. 358
 ◊ Included in Valve Gasket Set-Ref. No. 1095

● Included in Carburetor Overhaul Kit-Ref. No. 121
 ◆ Included in Carburetor Gasket Set-Ref. No. 977



K&T Saw Shop 606-678-9623 or 606-561-4983

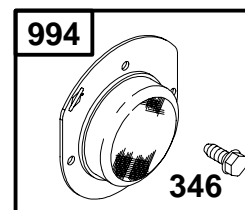
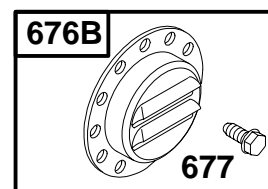
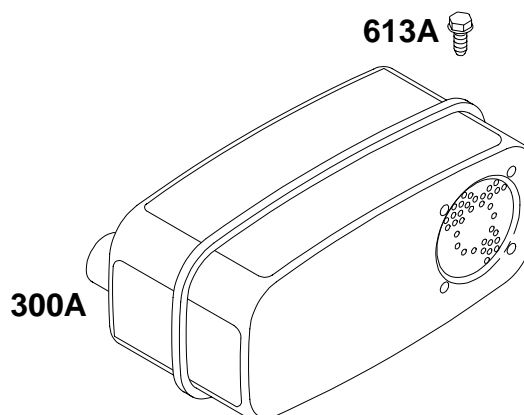
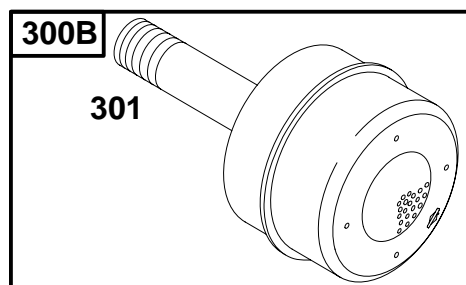
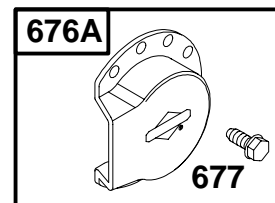
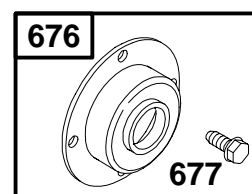
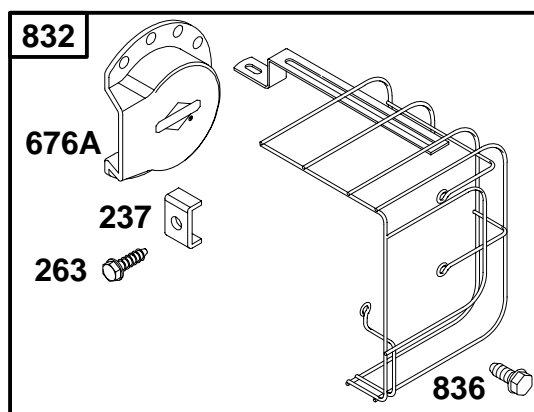
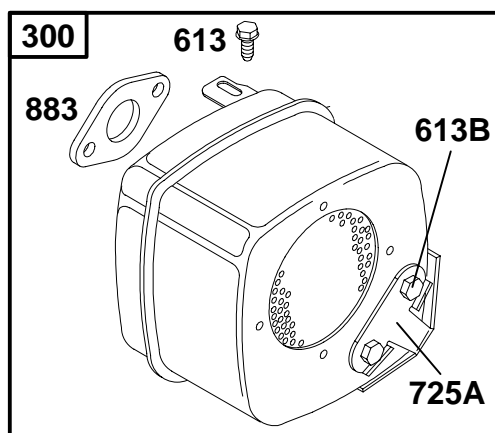
286700 to 286799



REF. NO.	PART NO.	DESCRIPTION	REF. NO.	PART NO.	DESCRIPTION	REF. NO.	PART NO.	DESCRIPTION
11	280100	Tube—Breather (Used After Code Date 98091300).	875	694942	Base—Air Cleaner (Use with Nikki Carburetor)	971	692126	Screw (Air Cleaner Base) (Used After Code Date 98091300).
167	281051	Seal—Air Cleaner Nut	Note ——— 693676 Base—Air Cleaner (Use with Walbro Carburetor) (Used After Code Date 98091300.)			Note ——— 94513 Screw (Air Cleaner Base) (Used Before Code Date 98091400.)		
176	★Ø281106	O-Ring Seal (Air Cleaner Base)						
185	94010	Nut (Air Cleaner Base)						
344	693675	Screw (Cable Clamp)						
445	496894	Filter—Air Cleaner Cartridge						
467	493903	Knob—Air Cleaner						
607	690703	Screw (Air Cleaner Brace)						
607A	94929	Screw (Air Cleaner Brace)	967	272403	Filter—Pre Cleaner			
646	690460	Brace—Air Cleaner	968	281104	Cover—Air Cleaner			

★ Included in Engine Gasket Set-Ref. No. 358
 ∅ Included in Valve Gasket Set-Ref. No. 1095

● Included in Carburetor Overhaul Kit-Ref. No. 121
 ◆ Included in Carburetor Gasket Set-Ref. No. 977

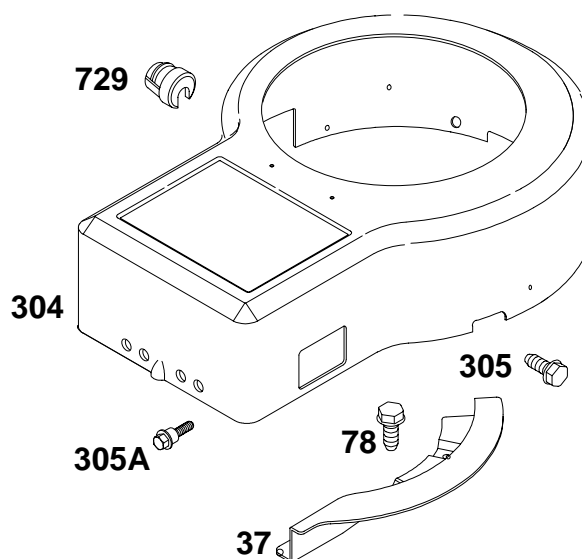
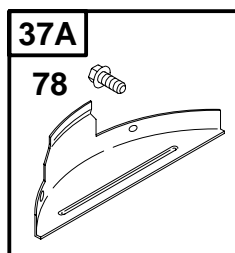
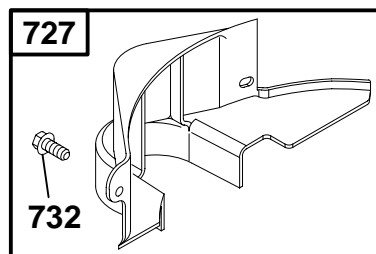


REF. NO.	PART NO.	DESCRIPTION	REF. NO.	PART NO.	DESCRIPTION	REF. NO.	PART NO.	DESCRIPTION
237	690409	Retainer-Muffler Guard	303	690281	Elbow-Exhaust	676A	393761	Deflector-Muffler
263	691083	Screw (Muffler Guard Retainer)	346	94896	Screw (Spark Arrestor)	676B	397630	Deflector-Muffler
298	261564	Locknut-Muffler/Elbow	613	94786	Screw (Exhaust Muffler)	677	94896	Screw (Muffler Deflector)
300	491413	Muffler	613A	94929	Screw (Exhaust Muffler)	725A	690420	Shield-Heat
300A	498984	Muffler	613B	93927	Screw (Exhaust Muffler)	832	692361	Guard-Muffler
300B	391569	Muffler	676	396903	Deflector-Muffler	836	690367	Screw (Muffler Guard)
301	93768	Pipe-Exhaust				883	★Ø272293	Gasket-Exhaust
						994	392390	Arrestor-Spark

★ Included in Engine Gasket Set-Ref. No. 358
 Ø Included in Valve Gasket Set-Ref. No. 1095

● Included in Carburetor Overhaul Kit-Ref. No. 121
 ◆ Included in Carburetor Gasket Set-Ref. No. 977

286700 to 286799

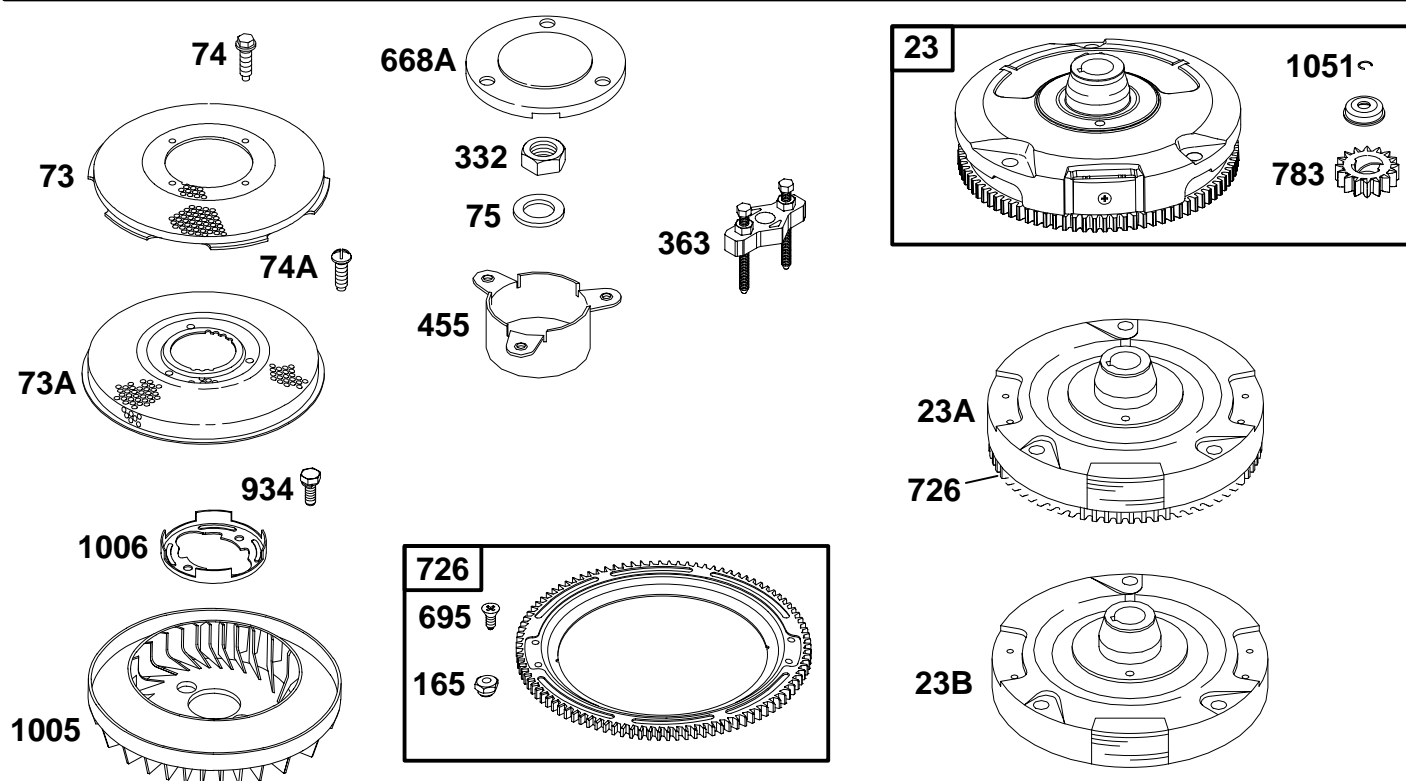


1036 EMISSIONS LABEL

REF. NO.	PART NO.	DESCRIPTION	REF. NO.	PART NO.	DESCRIPTION	REF. NO.	PART NO.	DESCRIPTION
37	690456	Guard-Flywheel				1036	695699	Label-Emissions
37A	690806	Guard-Flywheel Used on Type No(s). 0131, 0139, 0418, 1015, 1107, 1122, 1139, 4015, 4016, 4515.			695065 Housing- Blower (Black) (Used After Code Date 99102400). Used on Type No(s). 1029, 1122, 1190, 1193, 4515, 4516, 4521, 4528, 4529.			(Used After Code Date 00063000).
78	94896	Screw (Flywheel Guard)			691400 Housing- Blower (Red) (Used Before Code Date 99102500). Used on Type No(s). 1029, 1122, 1193, 4515, 4516, 4521, 4528, 4529.			Note 695036 Label- Emissions (Used After Code Date 99093000 and Before Code Date 00070100).
304	691400	Housing-Blower (Red) (Used After Code Date 93072000).			690846 Housing- Blower (Black) (Used Before Code Date 99102500). Used on Type No(s). 1190, 4515, 4529.			694325 Label- Emissions (Used After Code Date 99100100 and Before Code Date 98123100).
		Note 494268 Housing- Blower (Red) (Used Before Code Date 93071900).						499362 Label- Emissions (Used After Code Date 99010100 and Before Code Date 97052500).
		690846 Housing- Blower (Black) (Used After Code Date 93072000).						499361 Label- Emissions (Used Before Code Date 97052600).
		494269 Housing- Blower (Black) (Used Before Code Date 93071900).	305	94786	Screw (Blower Housing)			
			305A	692127	Screw (Blower Housing)			
			727	490324	Cover-Starter Drive			
			729	690596	Clip-Wire			
			732	94903	Screw (Starter Drive Cover)			

★ Included in Engine Gasket Set-Ref. No. 358
 ∅ Included in Valve Gasket Set-Ref. No. 1095

● Included in Carburetor Overhaul Kit-Ref. No. 121
 ◆ Included in Carburetor Gasket Set-Ref. No. 977

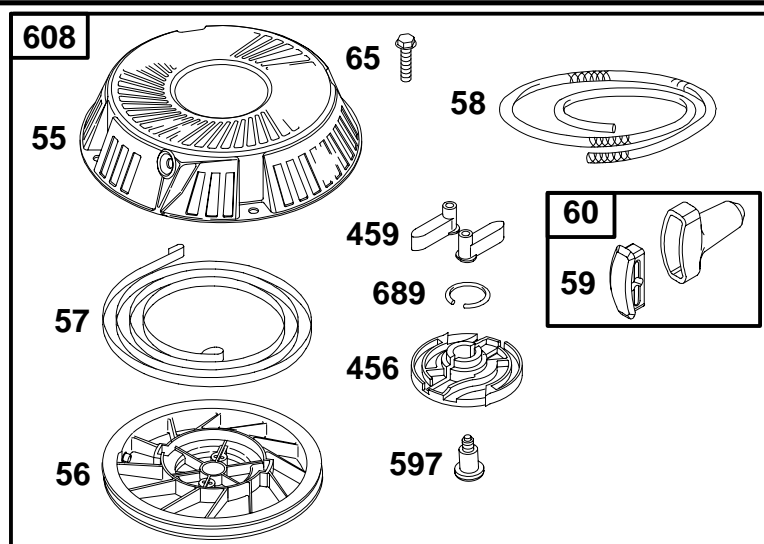


REF. NO.	PART NO.	DESCRIPTION	REF. NO.	PART NO.	DESCRIPTION	REF. NO.	PART NO.	DESCRIPTION
23	693557	Flywheel (Steel Ring Gear) (Includes Steel Pinion Gear) ———— Note ——— 693556 Flywheel (Steel Ring Gear) (Includes Steel Pinion Gear) Used on Type No(s). 1021, 1160, 1172, 1182, 1185, 1424, 1425, 4520, 4521.			0417, 0422, 0424, 0425, 0442, 0443, 0450, 0455, 1021, 1160, 1172, 1182, 1185, 1424, 1425, 4020, 4021, 4030, 4031, 4515, 4516 4520, 4521.	165	693148	Nut (Ring Gear)
23A	492326	Flywheel (Plastic Ring Gear) ———— Note ——— 692682 Flywheel (Plastic Ring Gear) Used on Type No(s). 0111, 0116, 0121, 0126, 0127, 0129, 0142, 0145, 0149, 0157, 0160, 0161, 0163, 0170, 0172, 0173, 0174, 0175, 0176, 0179, 0182, 0185, 0414, 0416,	23B	693555	Flywheel (Used with Rewind Only Starter) (Used After Code Date 98091300). ———— Note ——— 690775 Flywheel (Used with Rewind Only Starter) (Used Before Code Date 98091400).	332	94877	Nut (Flywheel)
			73	691191	Screen—Rotating	363	19203	Flywheel Puller
			73A	224517	Screen—Rotating	455	691173	Cup—Flywheel
			74	93758	Screw (Rotating Screen)	668A	691323	Spacer
			74A	94626	Screw (Rotating Screen)	695	693109	Screw (Ring Gear)
			75	225136	Washer (Flywheel)	726	399676	Gear—Ring (Aluminum) (Services Plastic Ring Gear Only)
						783	693713	Gear—Pinion (For Steel Ring Gear Only)
						934	94627	Screw (Fan Retainer)
						1005	695056	Fan—Flywheel (Used After Code Date 99102400). ———— Note ——— 280687 Fan—Flywheel (Used Before Code Date 99102500).
						1006	690452	Retainer—Fan
						1051	263080	Ring—Retaining

★ Included in Engine Gasket Set—Ref. No. 358
 ∅ Included in Valve Gasket Set—Ref. No. 1095

● Included in Carburetor Overhaul Kit—Ref. No. 121
 ◆ Included in Carburetor Gasket Set—Ref. No. 977

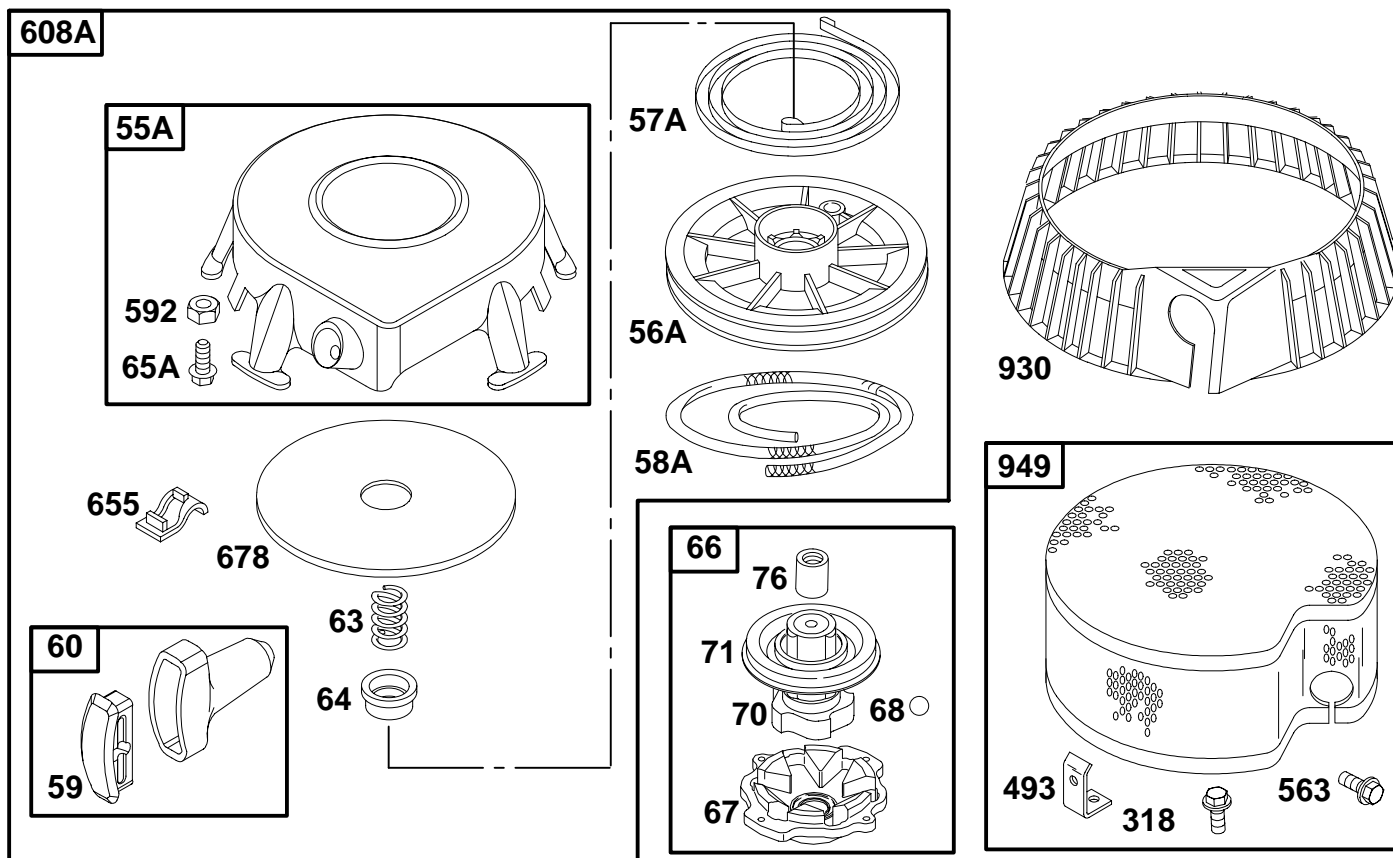
286700 to 286799



REF. NO.	PART NO.	DESCRIPTION	REF. NO.	PART NO.	DESCRIPTION	REF. NO.	PART NO.	DESCRIPTION
55	695130	Housing-Rewind Starter	59	490653	Insert-Grip	597	94943	Screw
56	695129	Pulley-Starter	60	490652	Grip-Starter Rope			(Pawl Friction Plate)
57	695131	Spring-Rewind Starter	65	695453	Screw	608	695058	Starter-Rewind
58	695132	Rope-Starter			(Rewind Starter)			(Used After Code Date 99102400).
		(63" Length)	455A	695113	Cup-Flywheel	689	263073	Spring-Friction
		(Cut to Required Length)	456	695128	Plate-Pawl Friction	1044	94673	Screw
			459	281505	Pawl-Ratchet			(Flywheel)

★ Included in Engine Gasket Set-Ref. No. 358
 ∅ Included in Valve Gasket Set-Ref. No. 1095

● Included in Carburetor Overhaul Kit-Ref. No. 121
 ◆ Included in Carburetor Gasket Set-Ref No. 977

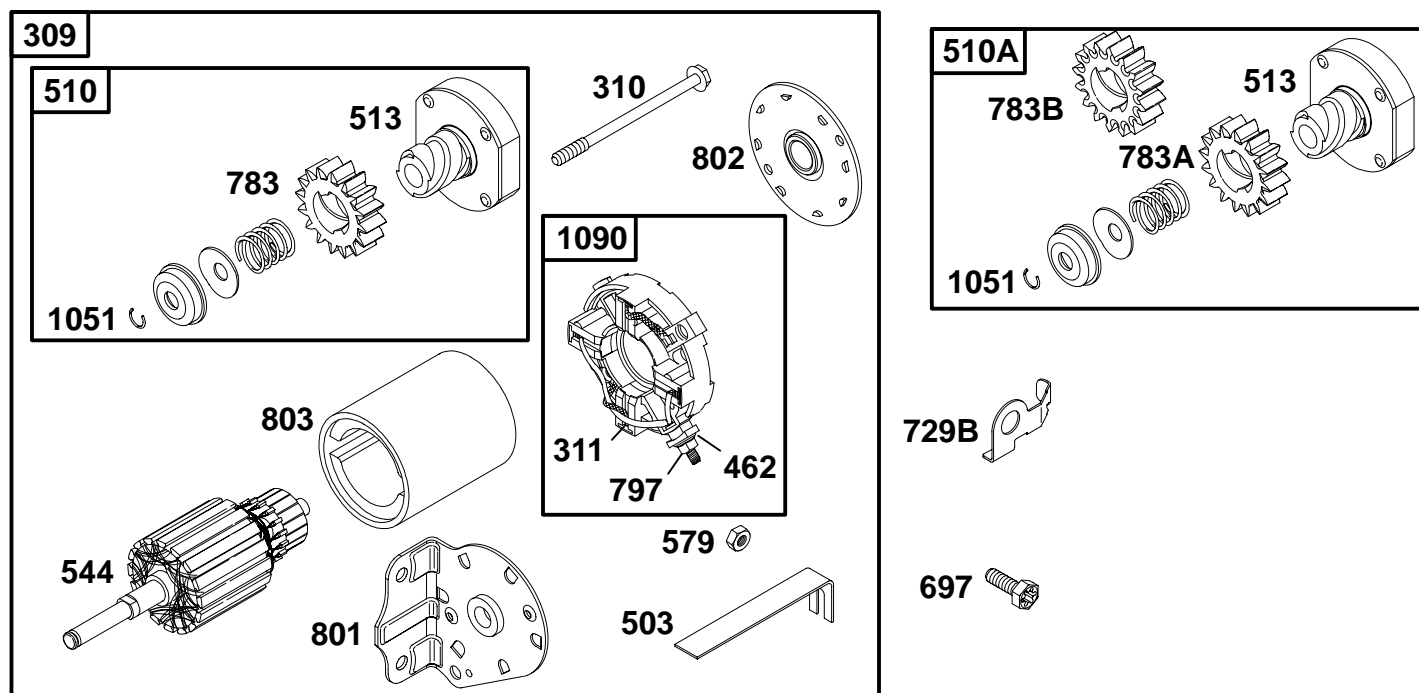


REF. NO.	PART NO.	DESCRIPTION	REF. NO.	PART NO.	DESCRIPTION	REF. NO.	PART NO.	DESCRIPTION
55A	393576	Housing-Rewind Starter (Includes 63" Rope)	65A	94904	Screw (Rewind Starter)	493	692825	Bracket-Mounting
56A	295871	Pulley-Starter	66	399671	Clutch-Starter (Used Before Code Date 99102500).	563	94902	Screw (Debris Screen Guard)
57A	490179	Spring-Rewind Starter	67	394897	Housing-Clutch	592	94908	Nut (Rewind Starter)
58A	66884	Rope-Starter (63" Length) (Cut to Required Length)	68	63770	Ball-Clutch	608A	390391	Starter-Rewind (Used Before Code Date 99102500).
59	490653	Insert-Grip	70	298799	Ratchet-Clutch	655	222598	Anchor-Rewind Spring
60	490652	Grip-Starter Rope	71	691359	Cover-Ratchet	678	490817	Spacer-Rewind
63	260414	Spring-Ratchet	76	68238	Seal-Ratchet	930	280685	Guard-Rewind
64	281204	Adapter-Ratchet Spring	318	93067	Screw (Mounting Bracket)	949	397530	Guard-Debris Screen

★ Included in Engine Gasket Set-Ref. No. 358
 ∅ Included in Valve Gasket Set-Ref. No. 1095

● Included in Carburetor Overhaul Kit-Ref. No. 121
 ◆ Included in Carburetor Gasket Set-Ref No. 977

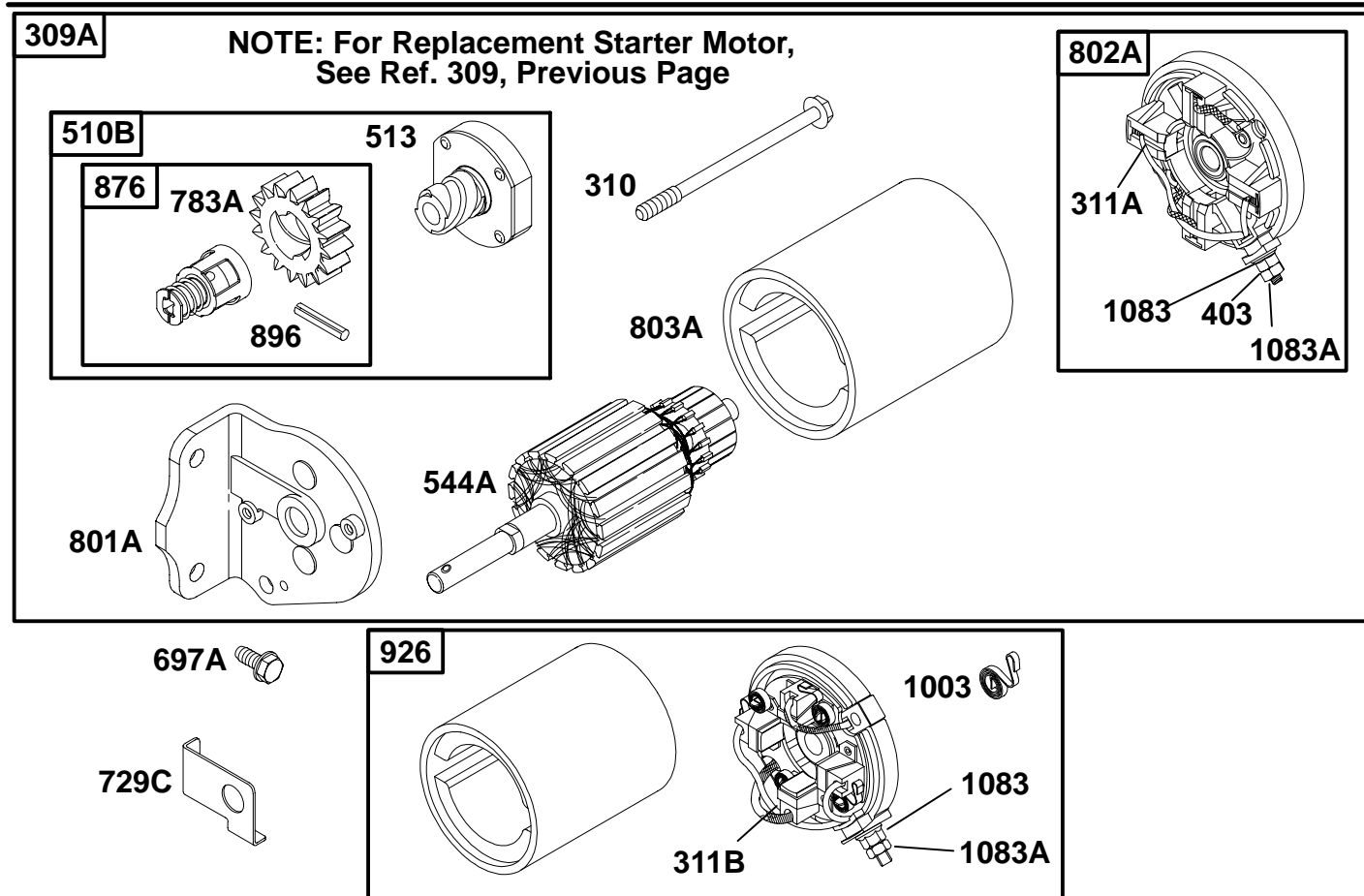
286700 to 286799



REF. NO.	PART NO.	DESCRIPTION	REF. NO.	PART NO.	DESCRIPTION	REF. NO.	PART NO.	DESCRIPTION
309	693551	Motor-Starter (3 5/8" Housing Length) (For Steel Ring Gear Only)		499521	Motor-Starter (4 3/8" Housing Length) (For Aluminum Ring Gear Only)	579	92278	Nut (Starter Cable)
		Note	310	690323	Bolt (Starter Motor) (3 5/8" Housing Length)	697	690372	Screw (Drive Cap)
	693552	Motor-Starter (4 3/8" Housing Length) (For Steel Ring Gear Only)			Note	729B	691224	Clip-Wire
	497595	Motor-Starter (3 5/8" Housing Length) (For Plastic Ring Gear Only)	311	497608	Brush Set	783	693713	Gear-Pinion (For Steel Ring Gear Only)
	497401	Motor-Starter (4 3/8" Housing Length) (For Plastic Ring Gear Only)	462	225137	Washer (Starter Cable)	783A	693059	Gear-Pinion (For Aluminum Ring Gear Only)
	693054	Motor-Starter (3 5/8" Housing Length) (For Aluminum Ring Gear Only)	503	691532	Strap-Starter	783B	693058	Gear-Pinion (For Plastic Ring Gear Only)
			510	693699	Drive-Starter (Used With Steel Ring Gear)	797	693167	Nut (Brush Retainer)
			510A	497606	Drive-Starter (Used With Aluminum & Plastic Ring Gears)	801	691429	Cap-Drive
			513	398003	Clutch-Drive	802	497607	Cap-End
			544	497603	Armature-Starter (3 5/8" Housing Length)	803	693757	Housing-Starter (3 5/8" Housing Length)
						1051	263080	Ring-Retaining
						1090	497605	Retainer-Brush

★ Included in Engine Gasket Set-Ref. No. 358
 ∅ Included in Valve Gasket Set-Ref. No. 1095

● Included in Carburetor Overhaul Kit-Ref. No. 121
 ◆ Included in Carburetor Gasket Set-Ref No. 977

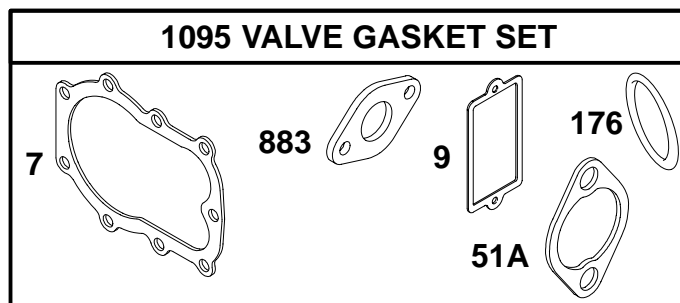
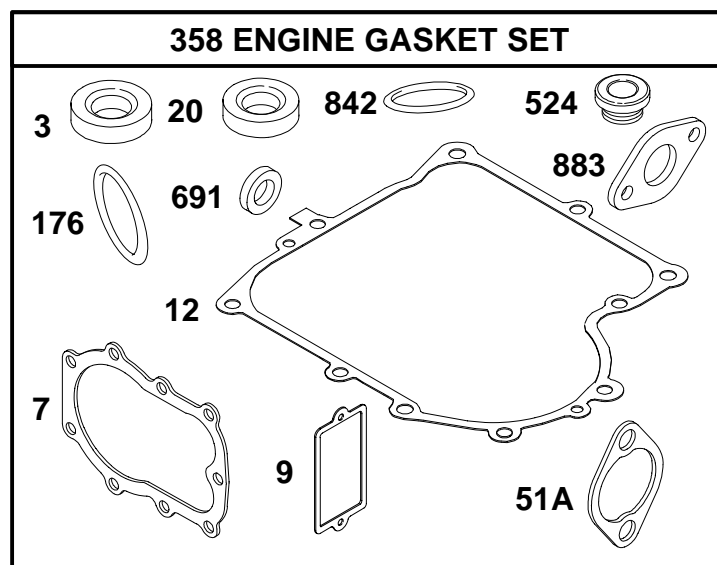


REF. NO.	PART NO.	DESCRIPTION	REF. NO.	PART NO.	DESCRIPTION	REF. NO.	PART NO.	DESCRIPTION
309A		Motor-Starter (For Replacement Starter Motor, See Ref 309, Previous Page)	510B	495878	Drive-Starter	803A	398159	Housing-Starter (For 3 5/8" Housing Length)
310	690323	Bolt (Starter Motor) (For 3 5/8" Housing Length)	513	398003	Clutch-Drive			Note
		Note	544A	390837	Starter Armature (For 3 5/8" Housing Length)			494205 Housing-Starter (For 4 3/8" Housing Length)
		691263 Bolt (Starter Motor) (For 4 3/8" Housing Length)			Note	876	495877	Kit-Pinion Spring
		692329 Bolt (Starter Motor) (For 4 9/16" Housing Length)	697A	94627	Screw (Drive Cap)	896	94288	Pin-Drive Retainer
311A	395538	Brush Set (For 3 5/8" Housing Length)	729C	224723	Clip-Wire	926	498233	Kit-Housing/Cap (For 4 9/16" Housing Length)
311B	490311	Brush Set (For 4 9/16" Housing Length)	783A	693059	Gear -Pinion (For Aluminum Ring Gear Only)	1003	490316	Spring -Brush (For 4 9/16" Housing Length)
403	690288	Washer (End Cap)	801A	394856	Cap-Drive	1083	94010	Nut (End Cap)
			802A	395537	Cap-End (For 3 5/8" Housing Length)	1083A	93715	Nut (End Cap)
					Note			
					494988 Cap-End (For 4 3/8" Housing Length)			

★ Included in Engine Gasket Set-Ref. No. 358
 ☼ Included in Valve Gasket Set-Ref. No. 1095

● Included in Carburetor Overhaul Kit-Ref. No. 121
 ◆ Included in Carburetor Gasket Set-Ref. No. 977

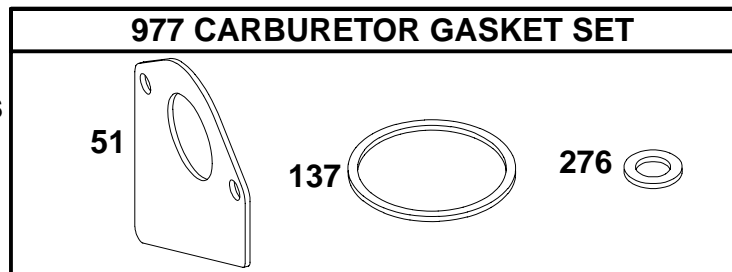
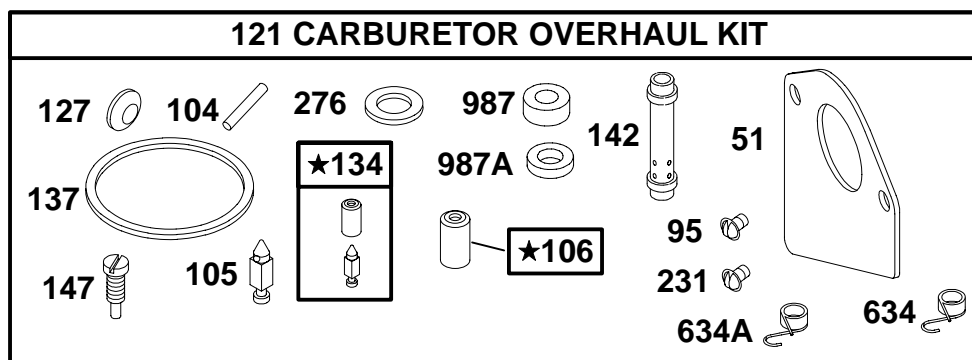
286700 to 286799



REF. NO.	PART NO.	DESCRIPTION	REF. NO.	PART NO.	DESCRIPTION	REF. NO.	PART NO.	DESCRIPTION
3	★391086	Seal-Oil (Magneto Side)	20	★291675	Seal-Oil (PTO Side)	524	★281370	Seal-Dipstick Tube
7	★Ø271866	Gasket-Cylinder Head	51A	★Ø272554	Gasket-Intake	691	★491323	Seal-Governor Shaft
9	★Ø27803	Gasket-Breather	176	★Ø281106	O-Ring Seal (Air Cleaner Base)	842	★270920	O-Ring Seal
12	★271916	Gasket-Crankcase (.015" Standard)	358	494241	Gasket Set-Engine	883	★Ø272293	Gasket-Exhaust
Note ★271997 Gasket-Crankcase (.005") ★271996 Gasket-Crankcase (.009")						1095	498539	Gasket Set-Valve

★ Included in Engine Gasket Set-Ref. No. 358
 Ø Included in Valve Gasket Set-Ref. No. 1095

● Included in Carburetor Overhaul Kit-Ref. No. 121
 ◆ Included in Carburetor Gasket Set-Ref. No. 977



★ **REQUIRES SPECIAL TOOLS TO INSTALL. SEE REPAIR INSTRUCTION MANUAL.**

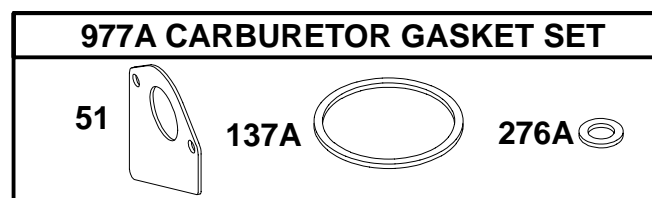
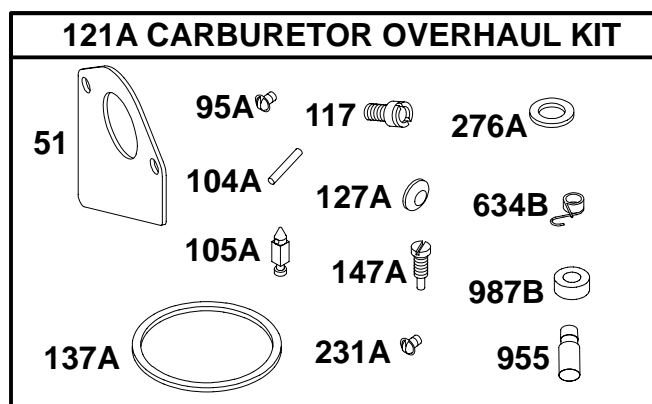
REF. NO.	PART NO.	DESCRIPTION	REF. NO.	PART NO.	DESCRIPTION	REF. NO.	PART NO.	DESCRIPTION
51	♦272465	Gasket-Intake	121	499220	Kit-Carburetor Overhaul (LMT 92, 93, 94, 95, 96) (Used After Code Date 96072500). ———— Note ——— 499231 Kit-Carburetor Overhaul (LMT 157, 158, 159, 160) (Used After Code Date 96072500). 497481 Kit-Carburetor Overhaul (Used Before Code Date 96072600).	142	♦691434	Nozzle-Carburetor (Standard) (LMT 92, 93, 94, 96) ———— Note ——— ♦691425 Nozzle-Carburetor (Standard) (LMT 1, 2, 3, 4, 5, 7, 37, 38, 39, 40, 41, 77, 78, 79, 80, 81, 157, 158, 159, 160)
95	♦94098	Screw (Throttle Valve)				147	♦497472	Jet-Pilot (LMT 1, 2, 3, 4, 5, 7, 37, 38, 39, 40, 41, 77, 78, 79, 80, 81)
104	♦690525	Pin-Float Hinge				231	♦94098	Screw (Choke Valve)
105	♦231855	Valve-Float Needle (Used After Code Date 92071900).				276	♦281164	Washer-Sealing
106	♦231854	Seat-Inlet (Gravity Feed) (Used After Code Date 92071900). ———— Note ——— ♦280328 Seat-Inlet (Gravity Feed) (Used Before Code Date 92072000). ♦231856 Seat-Inlet (Pump Feed) (Used After Code Date 92071900).	127	♦695005	Plug-Welch	634	♦690801	Spring/Seal Assembly (Manual Choke)
			134	♦494788	Kit-Needle/Seat (Gravity Feed) (Used Before Code Date 92072000).	634A	♦690802	Spring/Seal Assembly (Choke A Matic)
			137	♦281165	Gasket-Float Bowl	977	494385	Gasket Set-Carburetor
						987	♦691326	Seal-Throttle Shaft
						987A	♦692001	Seal-Throttle Shaft (LMT 1 thru 5, 7, 37 thru 41)

★ Included in Engine Gasket Set-Ref. No. 358
 ∅ Included in Valve Gasket Set-Ref. No. 1095

● Included in Carburetor Overhaul Kit-Ref. No. 121
 ♦ Included in Carburetor Gasket Set-Ref. No. 977

286700 to 286799

NIKKI CARBURETOR GASKET KITS



REF. NO.	PART NO.	DESCRIPTION	REF. NO.	PART NO.	DESCRIPTION	REF. NO.	PART NO.	DESCRIPTION
51	♦♦272465	Gasket-Intake	117	♦♦690880	Jet-Main	147A	♦♦694927	Jet-Pilot
95A	♦♦690718	Screw (Throttle Valve)	Note			231A	♦♦690718	Screw (Choke Valve)
104A	♦♦694918	Pin-Float Hinge	♦♦694925 Jet-Main (High Altitude)			276A	♦♦690997	Washer-Sealing
105A	♦♦694922	Valve-Float Needle	121A	694930	Kit-Carburetor Overhaul (Nikki)	634B	♦♦694912	Spring/Seal Assembly
			127A	♦♦694916	Plug-Welch	955	♦♦694924	Plug-Carburetor
			137A	♦♦694920	Gasket-Float Bowl	977A	694931	Gasket Set-Carburetor (Nikki)
						987B	♦♦690998	Seal-Throttle Shaft

★ Included in Engine Gasket Set-Ref. No. 358
 ∅ Included in Valve Gasket Set-Ref. No. 1095

● Included in Carburetor Overhaul Kit-Ref. No. 121
 ♦ Included in Carburetor Gasket Set-Ref. No. 977