

257400 to 257499

Illustrated Parts List

Model Series

257400 to 257499

TYPE NUMBERS
0100, 0115, 0117.

TO FIND THE CORRECT NUMBER OF THE PART YOU NEED: FOLLOW THE INSTRUCTIONS BELOW

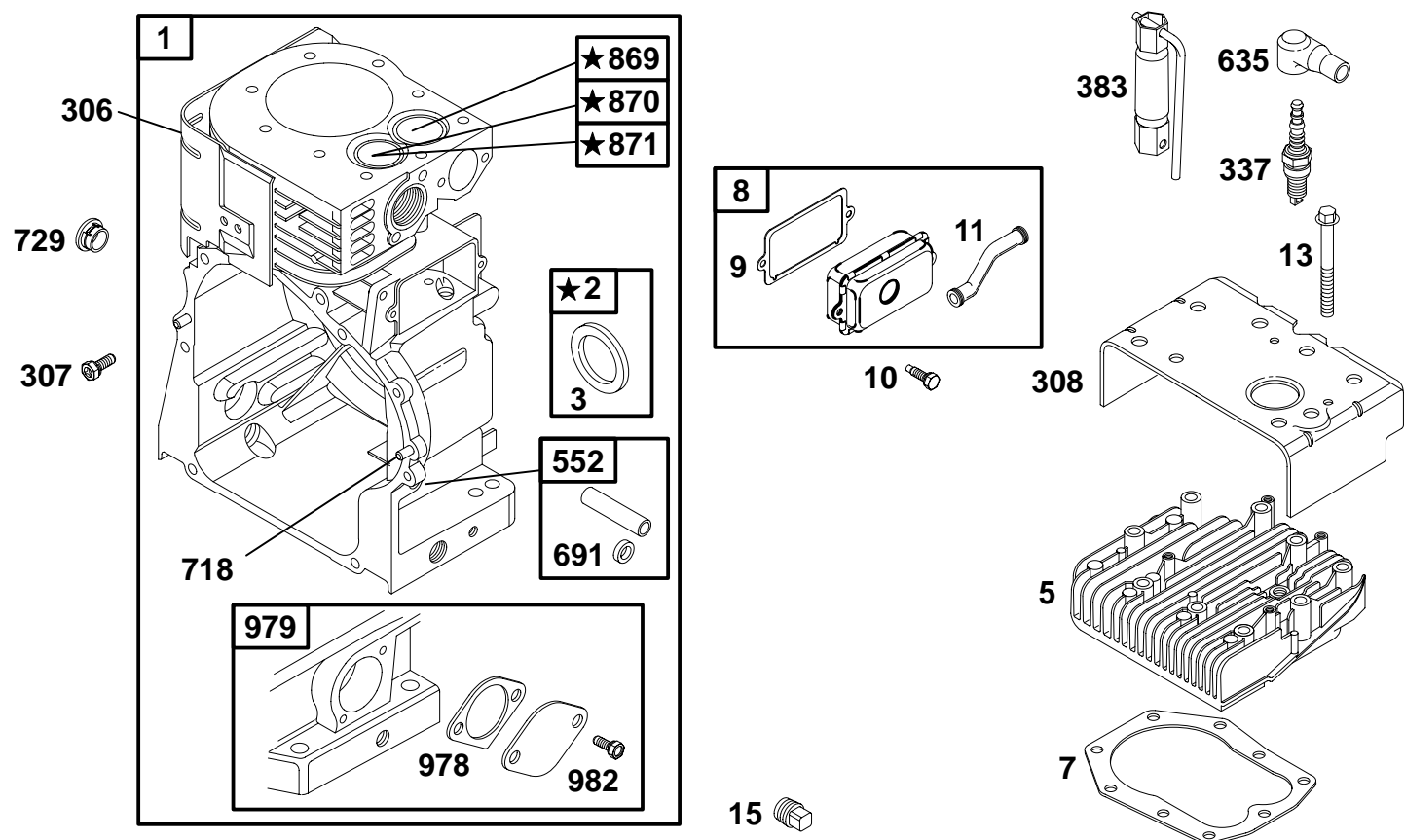
- A. Refer to Engine Model, Type and Code Number that is stamped on the blower housing of engine. Engine type numbers such as 0123 01 are listed only as 0123 in most instances. The two digits (01 or 02, etc.) to the right of the space may be required for more accurate parts identification in some instances. Select the Illustrated Parts List covering the correct Model Series and Type Number.
- B. Refer to the Illustrations and compare the original part with Illustration. The number next to the illustration is the Reference Number. Assemblies include all parts shown in frames. All parts shown in assembly frames having individual reference numbers can be purchased separately.
- C. After the Reference Number has been identified, refer to the Numerical text, where Reference and Primary Part Number are listed. **THE PRIMARY PART IS USED ON ALL TYPE NUMBERS EXCEPT THOSE TYPE NUMBERS UNDER "NOTE."**
- D. If a "Note" appears below the Primary Part Number, it means that this part differs from the Primary Part for certain types. If your Type number is listed under "Note," order the part referred to at the "Note."
- E. If your Engine Type Number does not appear after any part number listed under "Note," use the Primary Part Number.
- F. For Engine Type Numbers not covered by this book, check other Parts Lists having the same engine model or contact your source of supply.

PRINTED IN U.S.A.



COPYRIGHT by BRIGGS & STRATTON CORPORATION
All rights reserved. No part of this material may be reproduced or transmitted, in any form or by any means, electronic or mechanical, including photocopying, recording or by any information storage and retrieval system, without permission in writing from Briggs & Stratton Corporation.

257400 to 257499



1058 OWNER'S MANUAL

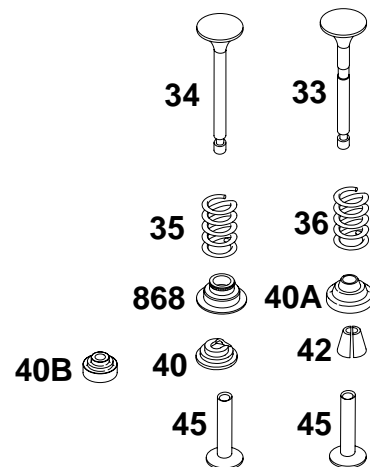
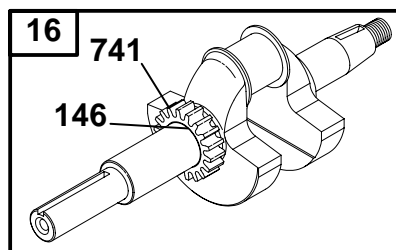
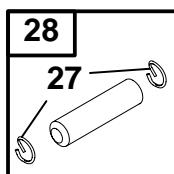
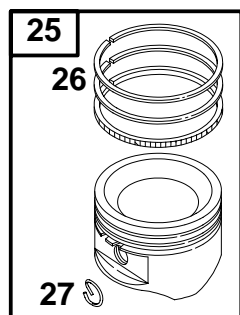
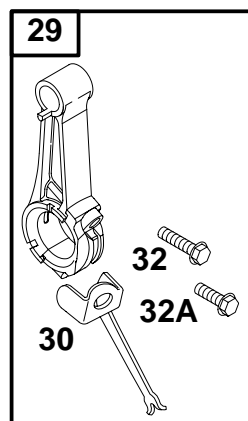
1019 LABEL KIT

★ **REQUIRES SPECIAL TOOLS TO INSTALL.
SEE REPAIR INSTRUCTION MANUAL.**

| REF. NO. | PART NO. | DESCRIPTION | REF. NO. | PART NO. | DESCRIPTION | REF. NO. | PART NO. | DESCRIPTION |
|----------|----------|---------------------------------|-------------|----------|-------------------------|----------|----------|-----------------------------------|
| 1 | 497411 | Cylinder Assembly | 15 | 94239 | Plug-Oil Drain | 729 | 691336 | Clip-Wire |
| 2 | 399265 | Kit-Bushing/Seal (Magneto Side) | Note | | | 869 | 261463 | Seat-Valve (Intake) |
| 3 | ★391086 | Seal-Oil (Magneto Side) | 306 | 690489 | Shield-Cylinder | 870 | 262924 | Seat-Valve (Exhaust) |
| 5 | 691154 | Head-Cylinder | 307 | 94930 | Screw (Cylinder Shield) | 871 | 261961 | Bushing-Valve Guide (Exhaust) |
| 7 | Ø★271866 | Gasket-Cylinder Head | 308 | 690491 | Cover-Cylinder Head | 978 | ★273326 | Gasket-Oil Gard® |
| 8 | 498038 | Breather Assembly | 337 | 802592 | Sparkplug | 979 | 691382 | Cover-Oil Gard® |
| 9 | Ø★27803 | Gasket-Breather | 383 | 89838 | Wrench-Sparkplug | 982 | 690351 | Screw (OIL GARD® Cover) |
| 10 | 691666 | Screw (Breather Assembly) | 552 | 491893 | Bushing-Governor Crank | 1019 | 497156 | Kit-Label |
| 11 | 280819 | Tube-Breather | 635 | 66538 | Boot-Sparkplug | 1058 | 274786 | Owner's Manual (Emission Engines) |
| 13 | 690904 | Screw (Cylinder Head) | 691 | ★491323 | Seal-Governor Shaft | | | |
| | | | 718 | 230192 | Pin-Locating | | | |

- ★ Included in Engine Gasket Set-Ref. No. 358.
- Included in Carburetor Overhaul Kit-Ref. No. 121.

- ◆ Included in Carburetor Gasket Set-Ref. No. 977.
- Ø Included in Valve Gasket Set-Ref. No. 1095.

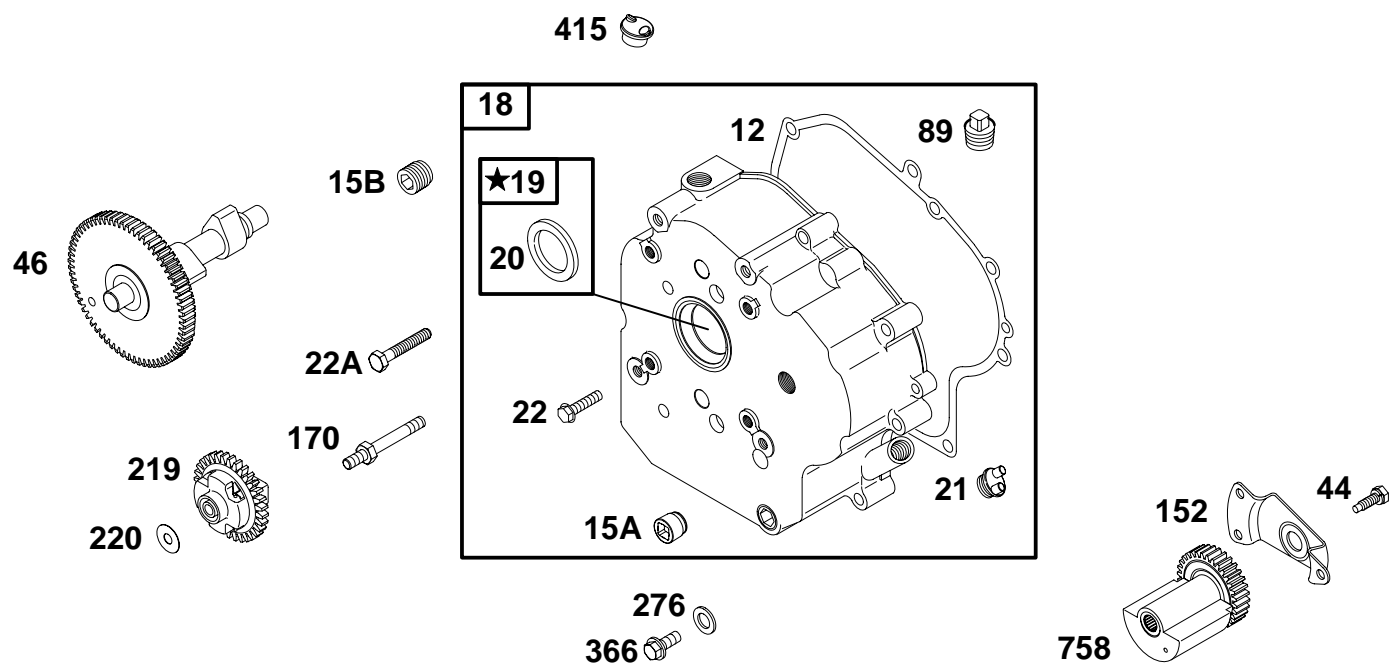


| REF. NO. | PART NO. | DESCRIPTION | REF. NO. | PART NO. | DESCRIPTION | REF. NO. | PART NO. | DESCRIPTION |
|----------|-------------|------------------------------|----------|-------------|----------------------------------|----------|----------|------------------------|
| 16 | 491645 | Crankshaft | 27 | 691299 | Lock-Piston Pin | 35 | 65906 | Spring-Valve (Intake) |
| 25 | 499282 | Piston Assembly (Standard) | 28 | 498319 | Pin-Piston | 36 | 26828 | Spring-Valve (Exhaust) |
| | Note | | 29 | 490348 | Rod-Connecting (Standard) | 40 | 221596 | Retainer-Valve |
| | 499286 | Piston Assembly (.010" O.S.) | | Note | | 40A | 292260 | Retainer-Valve |
| | 499292 | Piston Assembly (.020" O.S.) | | 490469 | Rod-Connecting (.020" Undersize) | 40B | 690274 | Retainer-Valve |
| | 499294 | Piston Assembly (.030" O.S.) | 30 | 694612 | Dipper-Connecting Rod | 42 | 494553 | Keeper-Valve |
| 26 | 495854 | Ring Set (Standard) | 32 | 690356 | Screw (Connecting Rod) | 45 | 262248 | Tappet-Valve |
| | Note | | 32A | 690348 | Screw (Connecting Rod) | 146 | 94196 | Key-Timing |
| | 495852 | Ring Set (.010" O.S.) | 33 | 261185 | Valve-Exhaust | 741 | 691284 | Gear-Timing |
| | 495851 | Ring Set (.020" O.S.) | 34 | 261462 | Valve-Intake | 868 | 497656 | Seal-Valve |
| | 495855 | Ring Set (.030" O.S.) | | | | | | |

★ Included in Engine Gasket Set-Ref. No. 358.
 ● Included in Carburetor Overhaul Kit-Ref. No. 121.

◆ Included in Carburetor Gasket Set-Ref. No. 977.
 ⌀ Included in Valve Gasket Set-Ref. No. 1095.

257400 to 257499

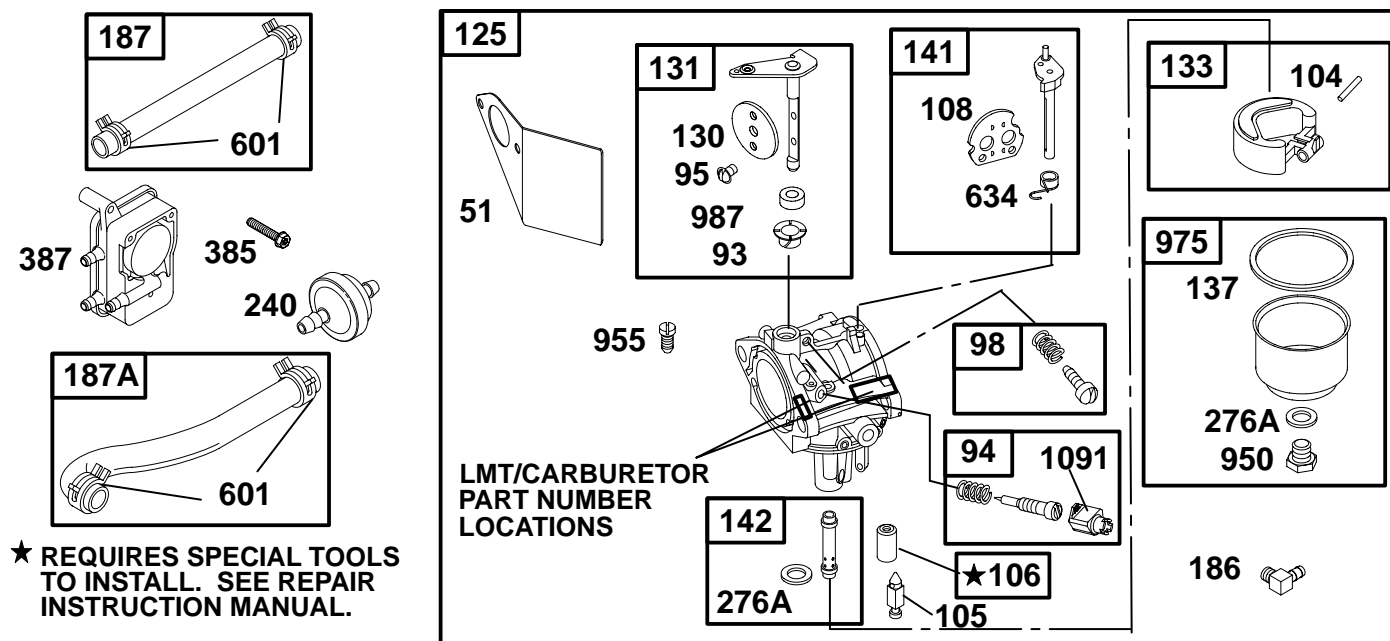


★ **REQUIRES SPECIAL TOOLS TO INSTALL.
SEE REPAIR INSTRUCTION MANUAL.**

| REF. NO. | PART NO. | DESCRIPTION | REF. NO. | PART NO. | DESCRIPTION | REF. NO. | PART NO. | DESCRIPTION |
|----------|----------|--------------------------------------|----------|----------|---|----------|----------|-----------------------------|
| 12 | ★272125 | Gasket-Crankcase (.015" Standard) | 21 | 281658 | Cap-Oil Fill | 170 | 94931 | Stud (Crankcase Cover) |
| | | Note | 22 | 93585 | Screw (Crankcase Cover/Sump) | 219 | 496786 | Gear-Governor |
| | ★272219 | Gasket-Crankcase (.005") | 22A | 694966 | Screw (Crankcase Cover/Sump, 2 1/8" Long) | 220 | 221551 | Washer (Governor Gear) |
| | ★272220 | Gasket-Crankcase (.009") | 44 | 94621 | Screw (Counterweight Retainer) | 276 | 690258 | Washer-Sealing |
| 15A | 94880 | Plug-Oil Drain | 46 | 692123 | Camshaft | 366 | 690304 | Screw (Timing Hole Plug) |
| 15B | 690343 | Plug-Oil Drain | 89 | 690283 | Plug Oil | 415 | 693463 | Plug |
| 18 | 496985 | Cover-Crankcase | 152 | 691172 | Retainer-Counterweight | 758 | 691369 | Counterweight |
| 19 | 399264 | Kit-Bushing/Seal | | | | | | |
| 20 | ★291675 | Seal-Oil (PTO Side) | | | | | | |

★ Included in Engine Gasket Set-Ref. No. 358.
● Included in Carburetor Overhaul Kit-Ref. No. 121.

◆ Included in Carburetor Gasket Set-Ref. No. 977.
⌀ Included in Valve Gasket Set-Ref. No. 1095.



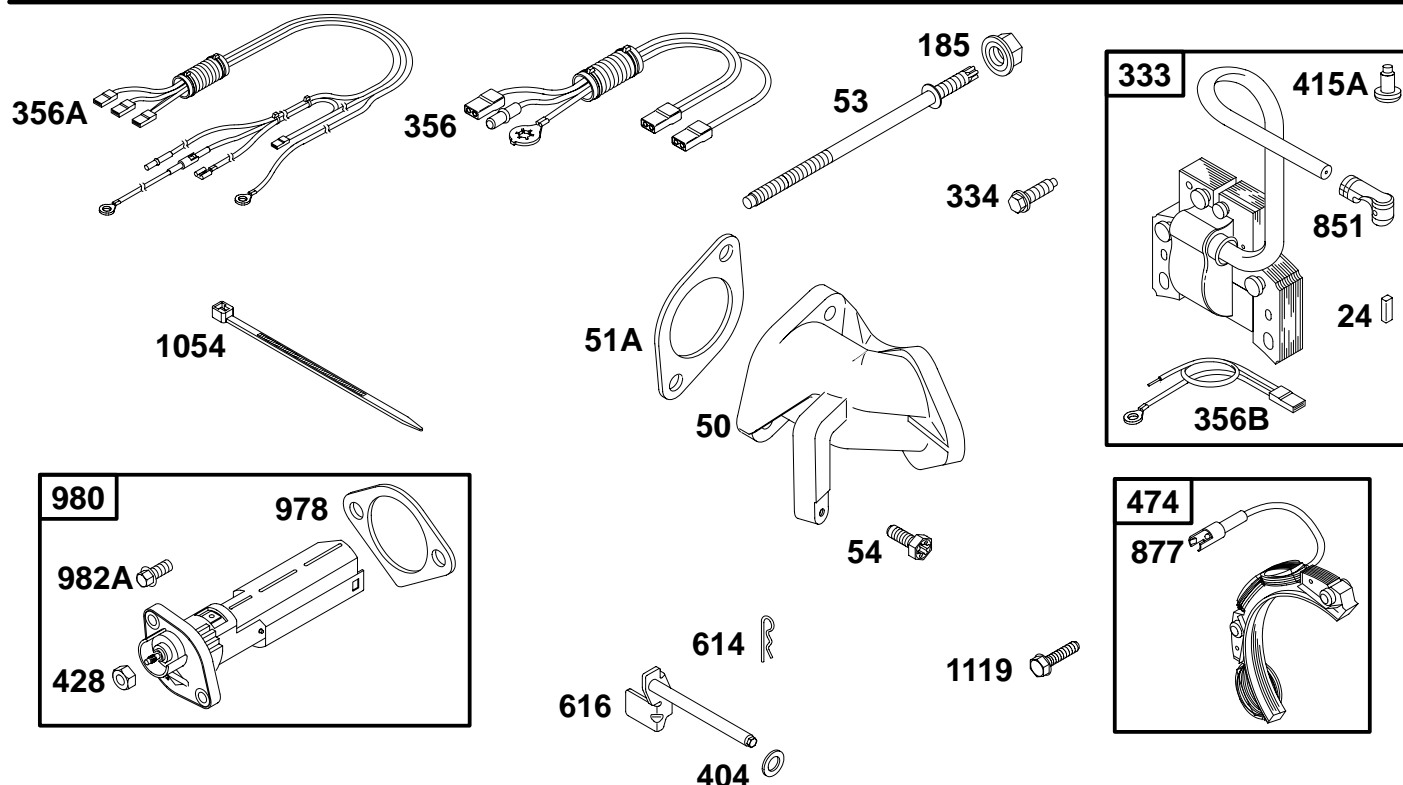
| REF. NO. | PART NO. | DESCRIPTION | REF. NO. | PART NO. | DESCRIPTION | REF. NO. | PART NO. | DESCRIPTION |
|----------|----------|---|----------|----------|--|----------|----------|--|
| 51 | 272708 | Gasket—Intake | | 690144 | Carburetor (Used Before Code Date 98060200). | 276A | 692255 | Washer—Sealing (Used After Code Date 00030800). |
| 93 | ●690602 | Bushing—Throttle Shaft | | | | | | Note |
| 94 | 498030 | Kit—Idle Mixture | 130 | 691750 | Valve—Throttle (Used After Code Date 00030800). | | | ●281164 Washer—Sealing (Used Before Code Date 00030900). |
| 95 | 691636 | Screw (Throttle Valve) (Used After Code Date 00030800). | | | Note | | | |
| | | Note | | 224539 | Valve—Throttle (Used Before Code Date 00030900). | 385 | 94789 | Screw (Fuel Pump) |
| | | ●94098 Screw (Throttle Valve) (Used Before Code Date 00030900). | 131 | 497846 | Kit—Throttle Shaft | 387 | 496257 | Pump—Fuel (Used Before Code Date 98060200). |
| 98 | 495800 | Kit—Idle Speed | 133 | 494381 | Float—Carburetor | 601 | 93053 | Clamp—Hose |
| 104 | ●690525 | Pin—Float Hinge | 137 | ●281165 | Gasket—Float Bowl | 634 | ●690802 | Spring/Seal Assembly |
| 105 | ●231935 | Valve—Float Needle | 141 | 497160 | Kit—Choke Shaft | 950 | 691657 | Screw (Float Bowl) (Used After Code Date 00030800). |
| 106 | 231854 | Seat—Inlet (Used After Code Date 98060100). | 142 | 690145 | Nozzle—Carburetor (Standard) | | | Note |
| | | Note | 186 | 493496 | Connector—Hose | | | 94642 Screw (Float Bowl) (Used Before Code Date 00030900). |
| | | ●231856 Seat—Inlet (Used Before Code Date 98060200). | 187 | 296004 | Line—Fuel (Cut to Required Length) | 955 | 695659 | Plug—Carburetor (Used After Code Date 00030800). |
| 108 | 690467 | Valve—Choke | 187A | 691049 | Line—Fuel (Molded) (Used Before Code Date 98060200). | 975 | 495933 | Bowl—Float |
| 125 | 695503 | Carburetor (Used After Code Date 00030800). | 240 | 298090 | Filter—Fuel (Used Before Code Date 98060200). | 987 | ●691326 | Seal—Throttle Shaft |
| | | Note | | | | 1091 | 691333 | Cap—Limiter |
| | | 693356 Carburetor (Used Before Code Date 00030900 and After Code Date 98060100). | | | | | | |

★ Included in Engine Gasket Set—Ref. No. 358.

● Included in Carburetor Overhaul Kit—Ref. No. 121.

◆ Included in Carburetor Gasket Set—Ref. No. 977.

⊗ Included in Valve Gasket Set—Ref. No. 1095.

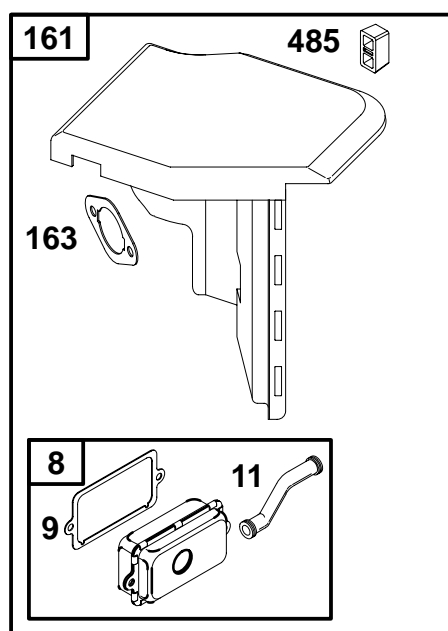


| REF. NO. | PART NO. | DESCRIPTION | REF. NO. | PART NO. | DESCRIPTION | REF. NO. | PART NO. | DESCRIPTION |
|----------|----------|--------------------------|----------|----------|-------------------------|----------|----------|---------------------------|
| 24 | 222698 | Key-Flywheel | 356 | 496614 | Wire-Stop | 851 | 493880 | Terminal-Sparkplug |
| 50 | 691157 | Manifold-Intake | 356A | 691403 | Wire-Stop | 877 | 393814 | Wire/Connector-Alternator |
| 51A | Ø★272707 | Gasket-Intake | 356B | 398808 | Wire-Stop | 978 | ★273326 | Gasket-Oil Gard® |
| 53 | 94778 | Stud (Carburetor) | 404 | 94927 | Washer (Governor Crank) | 980 | 496605 | Kit-Oil Gard® |
| 54 | 94913 | Screw (Intake Manifold) | 415A | 231143 | Plug | 982A | 690350 | Screw (OIL GARD® Kit) |
| 185 | 94010 | Nut (Air Cleaner Base) | 428 | 90576 | Nut (OIL GARD® Kit) | 1054 | 280275 | Tie-Cable |
| 333 | 398811 | Armature-Magneto | 474 | 391529 | Alternator | 1119 | 93621 | Screw (Alternator) |
| 334 | 691061 | Screw (Magneto Armature) | 614 | 93306 | Pin-Cotter | | | |
| | | | 616 | 691407 | Crank-Governor | | | |

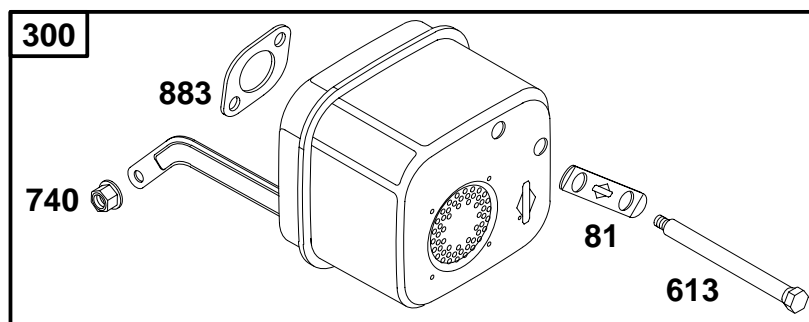
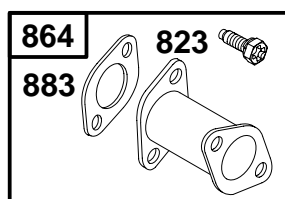
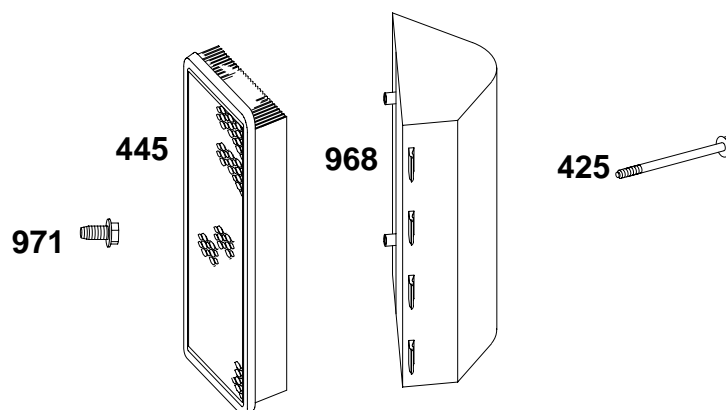
★ Included in Engine Gasket Set-Ref. No. 358.
 ● Included in Carburetor Overhaul Kit-Ref. No. 121.

◆ Included in Carburetor Gasket Set-Ref. No. 977.
 Ø Included in Valve Gasket Set-Ref. No. 1095.

257400 to 257499



10



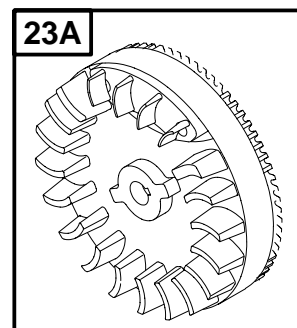
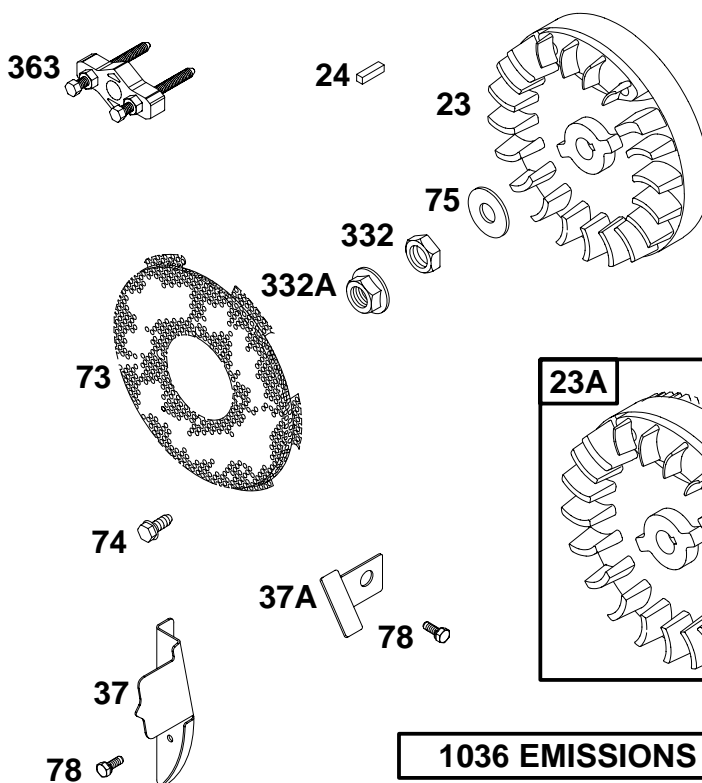
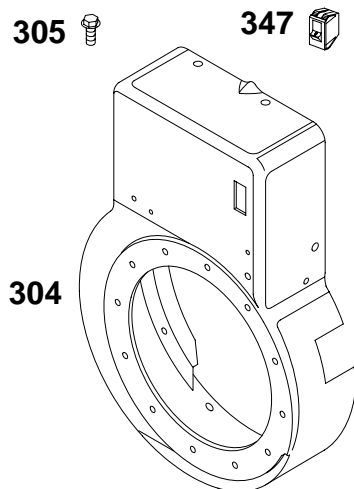
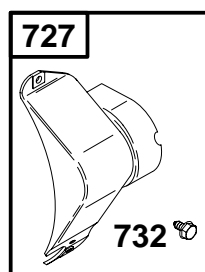
| REF. NO. | PART NO. | DESCRIPTION | REF. NO. | PART NO. | DESCRIPTION | REF. NO. | PART NO. | DESCRIPTION |
|----------|----------|---------------------------|----------|----------|------------------------------|----------|----------|--------------------------|
| 8 | 498038 | Breather Assembly | 300 | 497470 | Muffler | 740 | 691105 | Nut (Muffler Bracket) |
| 9 | Ø★27803 | Gasket-Breather | 425 | 94777 | Screw (Air Cleaner Cover) | 823 | 690363 | Screw (Muffler Adapter) |
| 10 | 691666 | Screw (Breather Assembly) | 445 | 496077 | Filter-Air Cleaner Cartridge | 864 | 497469 | Adapter-Muffler |
| 11 | 280819 | Tube-Breather | 485 | 280715 | Knob-Control | 883 | Ø★272293 | Gasket-Exhaust |
| 81 | 691178 | Lock-Muffler Screw | 613 | 93927 | Screw (Exhaust Muffler) | 968 | 281357 | Cover-Air Cleaner |
| 161 | 498544 | Base-Air Cleaner (Metal) | | | | 971 | 94930 | Screw (Air Cleaner Base) |
| 163 | Ø★692277 | Gasket-Air Cleaner | | | | | | |

★ Included in Engine Gasket Set-Ref. No. 358.

● Included in Carburetor Overhaul Kit-Ref. No. 121.

◆ Included in Carburetor Gasket Set-Ref. No. 977.

Ø Included in Valve Gasket Set-Ref. No. 1095.



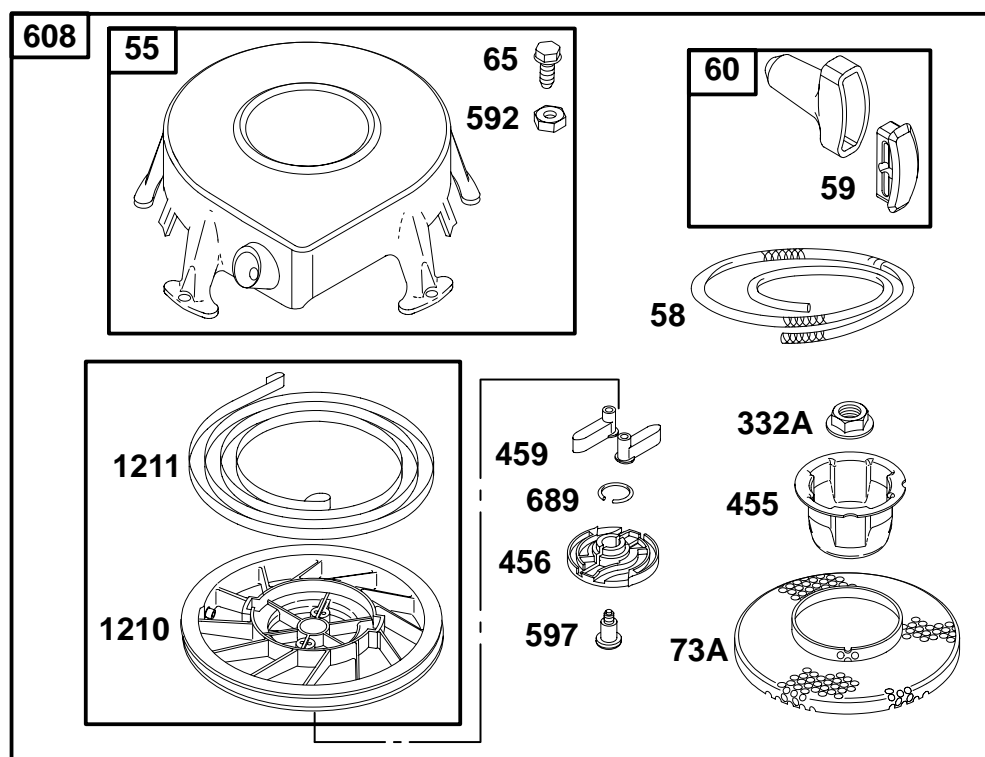
1036 EMISSIONS LABEL

| REF. NO. | PART NO. | DESCRIPTION | REF. NO. | PART NO. | DESCRIPTION | REF. NO. | PART NO. | DESCRIPTION |
|----------|----------|---------------------------|----------|----------|-----------------------------|----------|----------|--|
| 23 | 690672 | Flywheel | 305 | 94786 | Screw (Blower Housing) | 1036 | 695698 | Label-Emissions (Used After Code Date 0006300). |
| 23A | 498911 | Flywheel (With Gear-Ring) | 332 | 690662 | Nut (Flywheel) | | | ———— Note ———— |
| 24 | 222698 | Key-Flywheel | 332A | 693899 | Nut (Flywheel) | | | 695102 Label-Emissions |
| 37 | 690490 | Guard-Flywheel | 347 | 495098 | Switch-Rocker | | | (Used Before Code Date 00070100 and After Code Date 99093000). |
| 37A | 690488 | Guard-Flywheel | | | ———— Note ———— | | | 694324 Label-Emissions |
| 73 | 224874 | Screen-Rotating | | | 493521 Switch-Rocker | | | (Used Before Code Date 99100100 and After Code Date 98123100). |
| 74 | 94680 | Screw (Rotating Screen) | | | Used on Type No(s). 0100. | | | 499360 Label-Emissions |
| 75 | 225136 | Washer (Flywheel) | 363 | 19203 | Flywheel Puller | | | (Used Before Code Date 99010100). |
| 78 | 690364 | Screw (Flywheel Guard) | 727 | 395405 | Cover-Starter Drive | | | |
| 304 | 497591 | Housing-Blower | 732 | 691097 | Screw (Starter Drive Cover) | | | |

★ Included in Engine Gasket Set-Ref. No. 358.
 ● Included in Carburetor Overhaul Kit-Ref. No. 121.

◆ Included in Carburetor Gasket Set-Ref. No. 977.
 ⌀ Included in Valve Gasket Set-Ref. No. 1095.

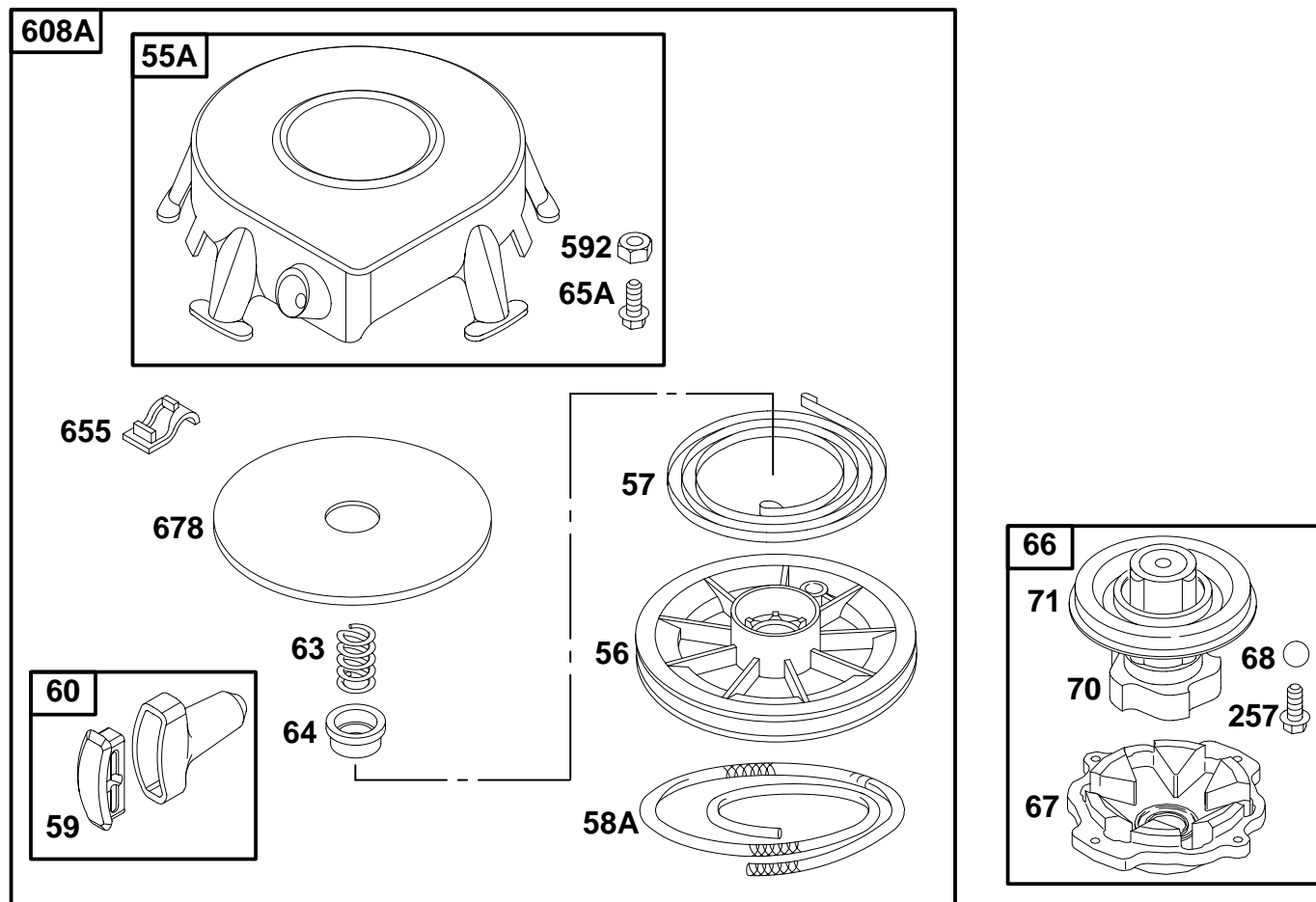
257400 to 257499



| REF. NO. | PART NO. | DESCRIPTION | REF. NO. | PART NO. | DESCRIPTION | REF. NO. | PART NO. | DESCRIPTION |
|----------|----------|--|----------|----------|---|----------|----------|---|
| 55 | 693904 | Housing–Rewind Starter (Used After Code Date 98111500). | 73B | 694020 | Screen–Rotating (Used with 99" Rope) | 608 | 693900 | Starter–Rewind (63" Length Rope) (Used After Code Date 98111500). |
| 58 | 66884 | Rope–Starter (63" Length) | 332A | 693899 | Nut (Flywheel) | 689 | 263073 | Spring–Friction |
| 58A | 69894 | Rope–Starter (99" Length) | 455 | 693902 | Cup–Flywheel | 1210 | 498144 | Pulley/Spring Assembly (Pulley) (Used After Code Date 98111500). |
| 59 | 490653 | Insert–Grip | 455A | 694017 | Cup–Flywheel (Used with 99" Rope) | 1211 | 498144 | Pulley/Spring Assembly (Spring) (Used After Code Date 98111500). |
| 60 | 490652 | Grip–Starter Rope | 456 | 281503 | Plate–Pawl Friction | | | |
| 65 | 94686 | Screw (Rewind Starter) | 459 | 281505 | Pawl–Ratchet | | | |
| 73A | 693905 | Screen–Rotating | 592 | 94908 | Nut (Starter Rewind) | | | |
| | | | 597 | 94943 | Screw (Pawl Friction Plate) | | | |

- ★ Included in Engine Gasket Set–Ref. No. 358.
- Included in Carburetor Overhaul Kit–Ref. No. 121.

- ◆ Included in Carburetor Gasket Set–Ref. No. 977.
- ⌀ Included in Valve Gasket Set–Ref. No. 1095.

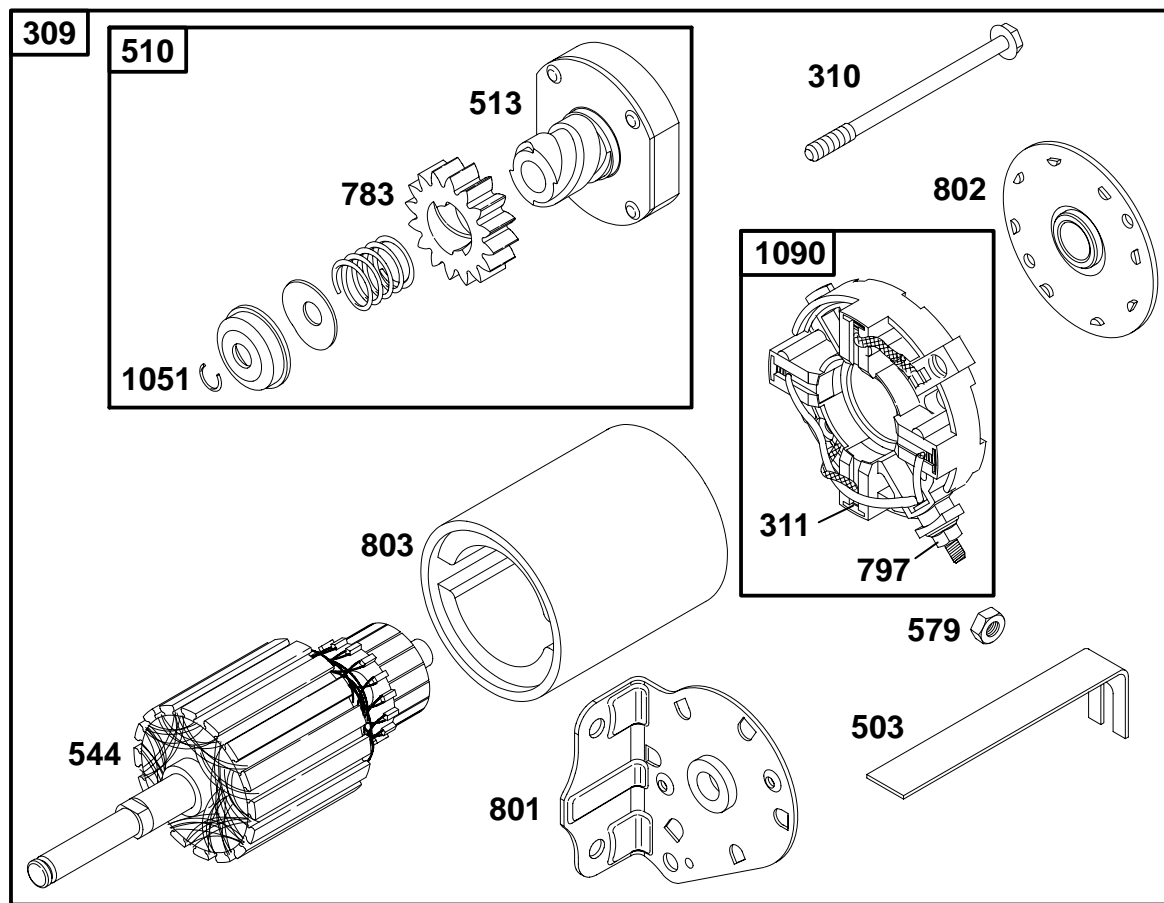


| REF. NO. | PART NO. | DESCRIPTION | REF. NO. | PART NO. | DESCRIPTION | REF. NO. | PART NO. | DESCRIPTION |
|----------|----------|---|----------|----------|--|----------|----------|---|
| 55A | 393576 | Housing–Rewind Starter (Used Before Code Date 98111600). | 63 | 260414 | Spring–Ratchet | 71 | 691359 | Cover–Ratchet |
| | | | 64 | 281204 | Adapter–Ratchet Spring | 257 | 94680 | Screw (Starter Clutch) |
| 56 | 295871 | Pulley–Starter | 65A | 94904 | Screw (Rewind Starter) | 592 | 94908 | Nut (Rewind Starter) |
| 57 | 490179 | Spring–Rewind Starter | 66 | 399671 | Clutch–Starter (Used Before Code Date 99030100) | 608A | 390391 | Starter–Rewind (Used Before Code Date 98111600). |
| 58A | 66894 | Rope–Starter (Cut to Required Length) | 67 | 394897 | Housing–Clutch | 655 | 222598 | Anchor–Rewind Spring |
| 59 | 490653 | Insert–Grip | 68 | 63770 | Ball–Clutch | 678 | 490817 | Spacer–Rewind |
| 60 | 490652 | Grip–Starter Rope | 70 | 298799 | Ratchet–Clutch | | | |

★ Included in Engine Gasket Set–Ref. No. 358.
● Included in Carburetor Overhaul Kit–Ref. No. 121.

◆ Included in Carburetor Gasket Set–Ref. No. 977.
⌀ Included in Valve Gasket Set–Ref. No. 1095.

257400 to 257499

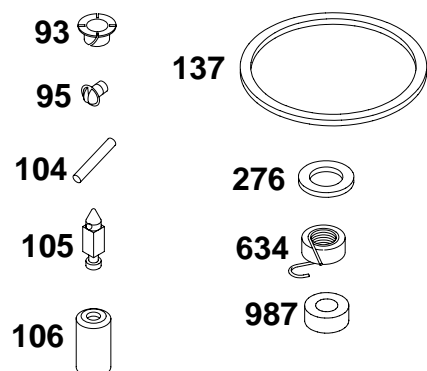


| REF. NO. | PART NO. | DESCRIPTION | REF. NO. | PART NO. | DESCRIPTION | REF. NO. | PART NO. | DESCRIPTION |
|----------|----------|----------------------|----------|----------|---------------------|----------|----------|----------------------|
| 309 | 693054 | Motor-Starter | 544 | 497603 | Armature-Starter | 797 | 693167 | Nut (Brush Retainer) |
| 310 | 690323 | Bolt (Starter Motor) | 579 | 92278 | Nut (Starter Cable) | 801 | 691429 | Cap-Drive |
| 311 | 497608 | Brush Set | 697 | 690372 | Screw (Drive Cap) | 802 | 497607 | Cap-End |
| 503 | 691532 | Strap-Starter | 783 | 693059 | Gear-Pinion | 803 | 691427 | Housing-Starter |
| 510 | 497606 | Drive-Starter | | | | 1051 | 263080 | Ring-Retaining |
| 513 | 398003 | Clutch-Drive | | | | 1090 | 497605 | Retainer-Brush |

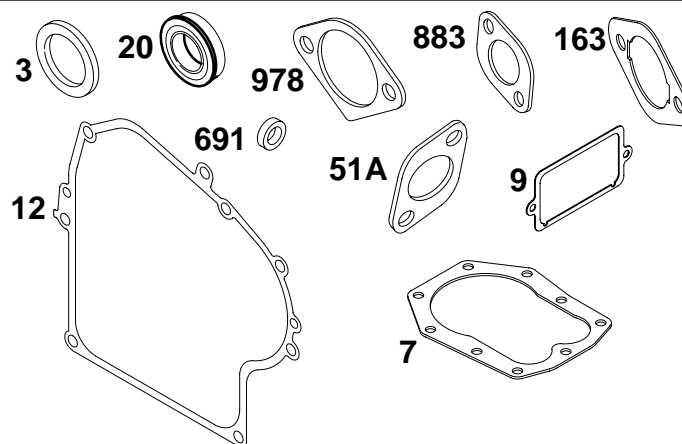
★ Included in Engine Gasket Set-Ref. No. 358.
 ● Included in Carburetor Overhaul Kit-Ref. No. 121.

◆ Included in Carburetor Gasket Set-Ref. No. 977.
 Ø Included in Valve Gasket Set-Ref. No. 1095.

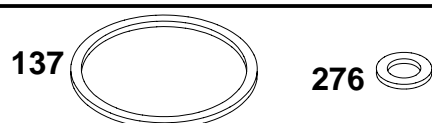
121 CARBURETOR OVERHAUL KIT



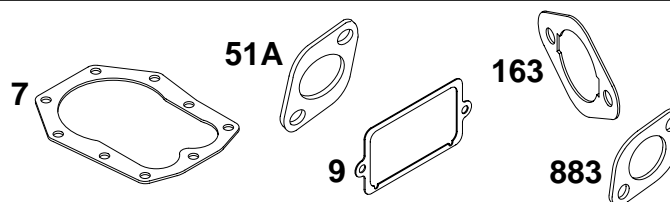
358 ENGINE GASKET SET



977 CARBURETOR GASKET SET



1095 VALVE GASKET SET



| REF. NO. | PART NO. | DESCRIPTION | REF. NO. | PART NO. | DESCRIPTION | REF. NO. | PART NO. | DESCRIPTION |
|-------------|----------|--|----------|----------|--|----------|----------|-------------------------|
| 3 | ★391086 | Seal—Oil (Magneto Side) | 20 | ★291675 | Seal—Oil (PTO Side) | 137 | ◆★281165 | Gasket—Float Bowl |
| 7 | Ø★271866 | Gasket—Cylinder Head | 51A | Ø★272707 | Gasket—Intake | 163 | Ø★692277 | Gasket—Air Cleaner |
| 9 | Ø★27803 | Gasket—Breather | 93 | ◆690602 | Bushing—Throttle Shaft | 276 | ◆★281164 | Washer—Sealing |
| 12 | ★272125 | Gasket—Crankcase (.015 Thick, Std.) | 95 | ◆94098 | Screw (Throttle Valve) | 358 | 497511 | Gasket Set—Engine |
| Note | | | 104 | ◆690525 | Pin—Float Hinge | 634 | ◆690802 | Spring/Seal Assembly |
| | ★272219 | Gasket—Crankcase (.005 Thick) | 105 | ◆231935 | Valve—Float Needle | 691 | ★491323 | Seal—Governor Shaft |
| | ★272220 | Gasket—Crankcase (.009 Thick) | 106 | ◆231856 | Seat—Inlet (Used Before Code Date 98060200). | 883 | Ø★272293 | Gasket—Exhaust |
| | | | 121 | 497450 | Kit—Carburetor Overhaul | 977 | 497069 | Gasket Set—Carburetor |
| | | | | | | 978 | ★273326 | Gasket—Oil Gard® |
| | | | | | | 987 | ◆691326 | Seal—Throttle Shaft |
| | | | | | | 1095 | 498538 | Gasket Set—Valve |

★ Included in Engine Gasket Set—Ref. No. 358.
 • Included in Carburetor Overhaul Kit—Ref. No. 121.

◆ Included in Carburetor Gasket Set—Ref. No. 977.
 Ø Included in Valve Gasket Set—Ref. No. 1095.