

# Illustrated Parts List

## Model Series

### 205400 to 205499

#### TYPE NUMBERS

0035, 0036, 0041,  
0044, 0049, 0100,  
0123, 0125, 0126,  
0128, 0129, 0130,  
0132, 0133, 0134,  
0136, 0140, 0141,  
0145, 0148.

#### TO FIND

#### THE CORRECT NUMBER OF THE PART YOU NEED: FOLLOW THE INSTRUCTIONS BELOW

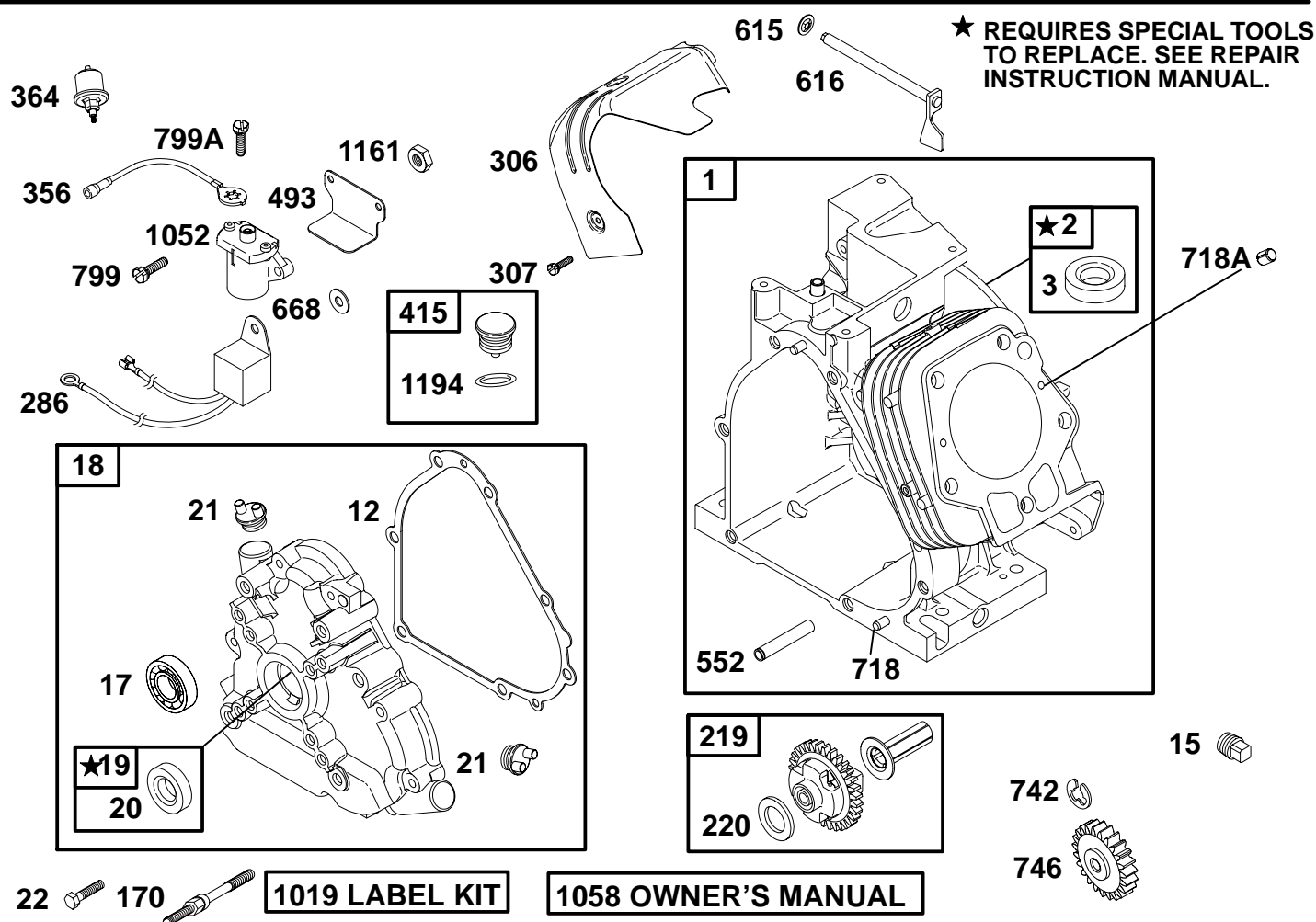
- A. Refer to Engine Model, Type and Code Number that is stamped on the blower housing of engine. Engine type numbers such as 0123 01 are listed only as 0123 in most instances. The two digits (01 or 02, etc.) to the right of the space may be required for more accurate parts identification in some instances. Select the Illustrated Parts List covering the correct Model Series and Type Number.
- B. Refer to the Illustrations and compare the original part with Illustration. The number next to the illustration is the Reference Number. Assemblies include all parts shown in frames. All parts shown in assembly frames having individual reference numbers can be purchased separately.
- C. After the Reference Number has been identified, refer to the Numerical text, where Reference and Primary Part Number are listed. **THE PRIMARY PART IS USED ON ALL TYPE NUMBERS EXCEPT THOSE TYPE NUMBERS UNDER "NOTE."**
- D. If a "Note" appears below the Primary Part Number, it means that this part differs from the Primary Part for certain types. If your Type number is listed under "Note," order the part referred to at the "Note."
- E. If your Engine Type Number does not appear after any part number listed under "Note," use the Primary Part Number.
- F. For Engine Type Numbers not covered by this book, check other Parts Lists having the same engine model or contact your source of supply.

PRINTED IN U.S.A.



COPYRIGHT by BRIGGS & STRATTON CORPORATION  
All rights reserved. No part of this material may be reproduced or transmitted, in any form or by any means, electronic or mechanical, including photocopying, recording or by any information storage and retrieval system, without permission in writing from Briggs & Stratton Corporation.

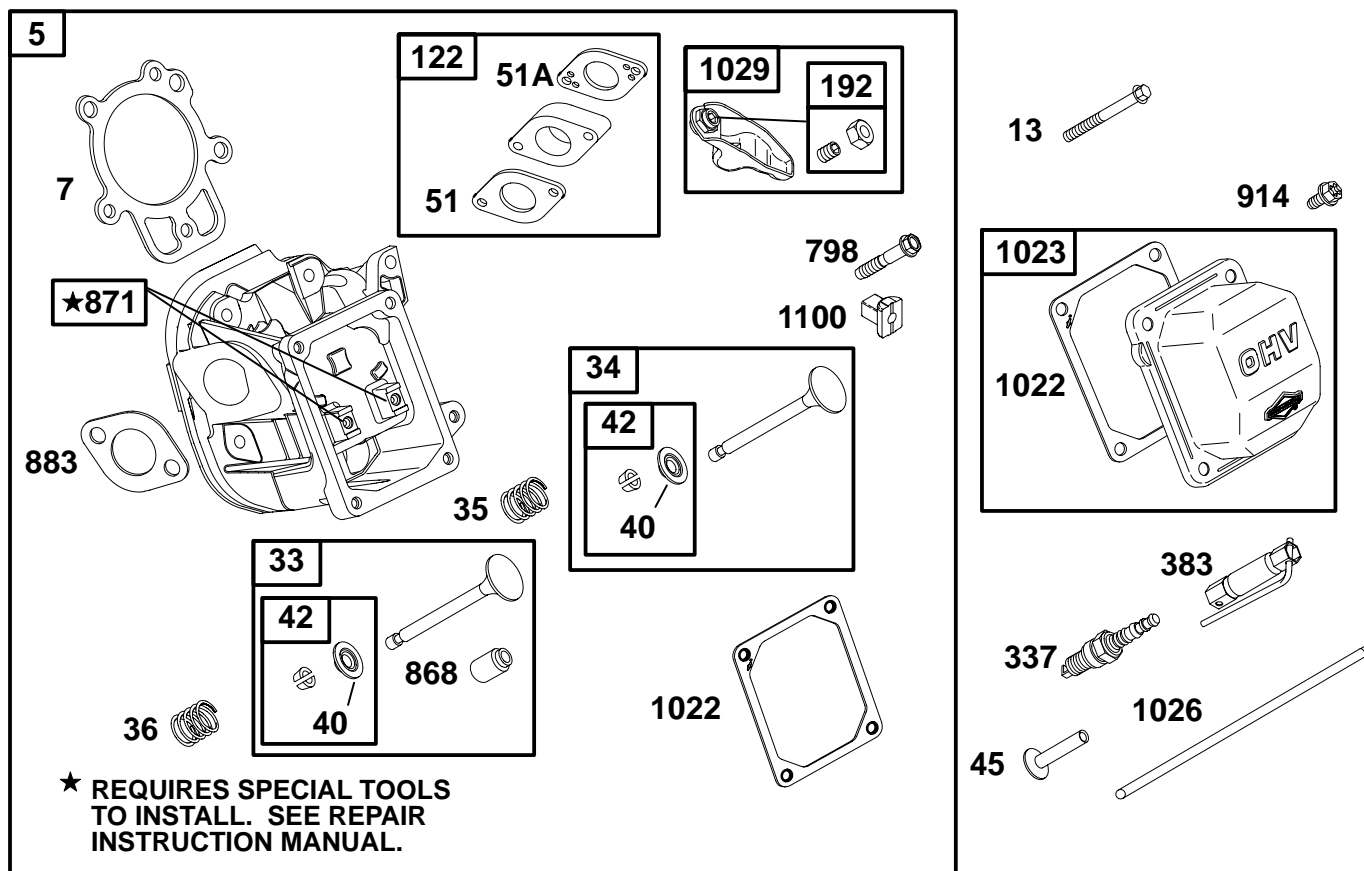
# 205400 to 205499



REF. NO.	PART NO.	DESCRIPTION	REF. NO.	PART NO.	DESCRIPTION	REF. NO.	PART NO.	DESCRIPTION
1	694673	Cylinder Assembly	19	495657	Kit-Bushing/Seal	615	694676	Retainer-Governor Shaft
2	495657	Kit-Bushing/Seal	20	★391086	Seal-Oil (PTO Side)	616	694675	Crank-Governor
3	★391086	Seal-Oil (Magneto Side)	21	281658	Cap-Oil Fill	668	693604	Spacer (Oil Sensor)
12	★694953	Gasket-Crankcase	22	695174	Screw (Crankcase Cover)	718	230192	Pin-Locating
15	94916	Plug-Oil Drain	170	695296	Stud (Crankcase Cover)	718A	695178	Pin-Locating
17	★695434	Bearing-Ball Used on Type No(s). 0035, 0036, 0041, 0132, 0136, 0141, 0145.	219	694950	Gear-Governor	742	692564	Retainer-E Ring
18	694951	Cover-Crankcase	220	691724	Washer (Governor Gear)	746	694679	Gear-Idler
		<b>Note</b>	286	695186	Module-Oil Sensor	799	695446	Screw (Oil Sensor)
		695372 Cover-Crankcase Used on Type No(s). 0035, 0036, 0041, 0132, 0136, 0141, 0145.	306	694677	Shield-Cylinder	799A	695447	Screw (Oil Sensor)
			307	94680	Screw (Cylinder Shield)	1019	695442	Kit-Label
			356	695366	Wire-Stop	1052	694858	Sensor-Oil
			364	695365	Terminal-Oil Plug	1058	274788	Owner's Manual
			415	691363	Plug	1161	693649	Nut (Oil Sensor)
			493	694861	Bracket-Mounting	1194	271485	O-Ring Seal (Plug)
			552	694674	Bushing-Governor Crank			

★ Included in Gasket Set-Ref. No. 358.  
 △ Included in Valve Overhaul Kit-Ref. No. 1033.

● Included in Carburetor Overhaul Kit-Ref. No. 121.  
 ◆ Included in Carburetor Gasket Set-Ref. No. 977.

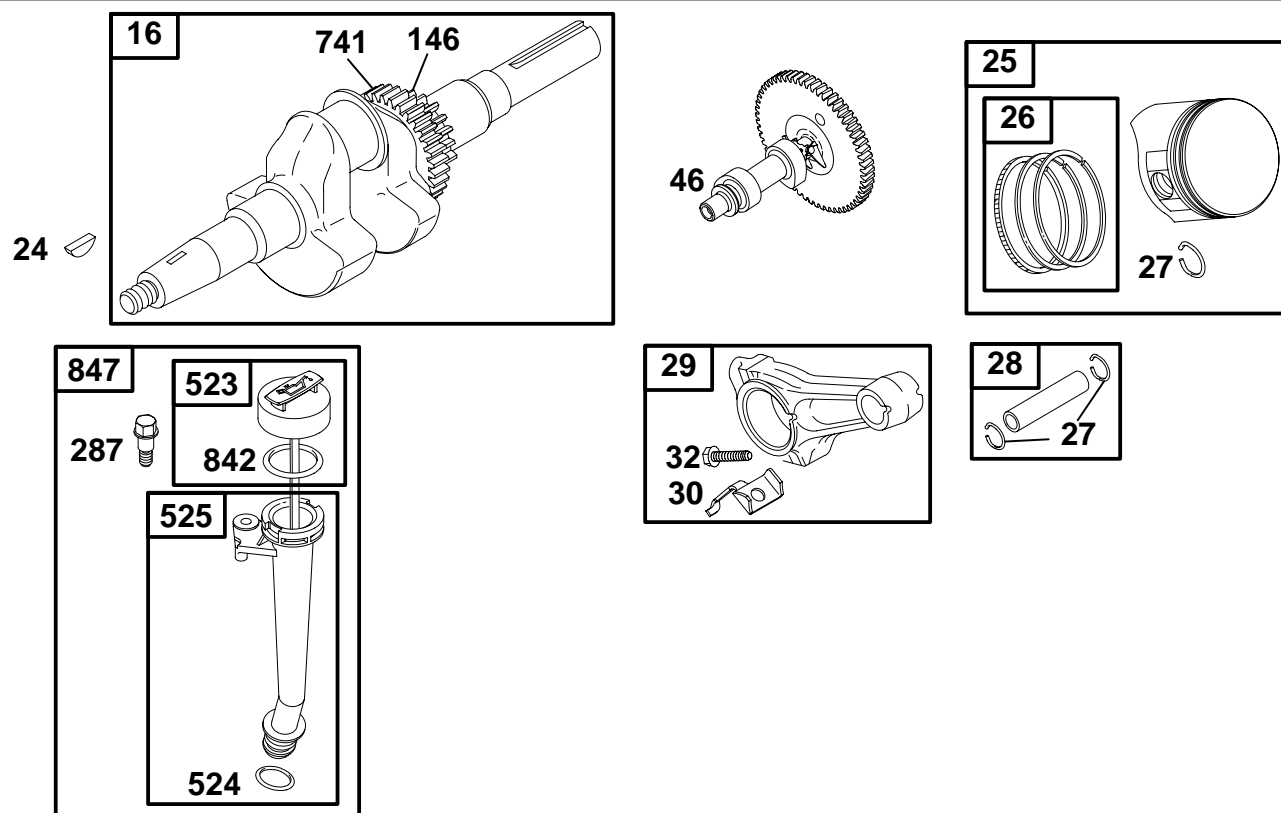


REF. NO.	PART NO.	DESCRIPTION	REF. NO.	PART NO.	DESCRIPTION	REF. NO.	PART NO.	DESCRIPTION
5	694873	Head-Cylinder	42	499586	Keeper-Valve	871	690969	Bushing-Valve Guide
7	★△694872	Gasket-Cylinder Head	45	690977	Tappet-Valve	883	★△695398	Gasket-Exhaust
13	690360	Screw	51	★△◆694874	Gasket-Intake	914	693732	Screw
		(Cylinder Head)	51A	★△◆694875	Gasket-Intake			(Rocker Arm Cover)
33	499596	Valve-Exhaust	122	★△◆694876	Spacer-Carburetor	1022	★△690971	Gasket-Rocker Cover
34	499597	Valve-Intake	192	690083	Adjuster-Rocker Arm	1023	694690	Cover-Rocker Arm
35	694865	Spring-Valve	337	491055	Sparkplug	1026	695177	Rod-Push
		(Intake)	383	19374	Wrench-Sparkplug	1029	690972	Arm-Rocker
36	694865	Spring-Valve	798	690967	Screw	1100	690973	Pivot-Rocker Arm
		(Exhaust)			(Rocker Arm)			
40	263215	Retainer-Valve	868	★△690968	Seal-Valve			

★ Included in Gasket Set-Ref. No. 358.  
 △ Included in Valve Overhaul Kit-Ref. No. 1033.

◆ Included in Carburetor Overhaul Kit-Ref. No. 121.  
 ◆ Included in Carburetor Gasket Set-Ref. No. 977.

## 205400 to 205499



REF. NO.	PART NO.	DESCRIPTION	REF. NO.	PART NO.	DESCRIPTION	REF. NO.	PART NO.	DESCRIPTION
16	695369	Crankshaft	25	694003	Piston Assembly (Standard)	27	690975	Lock-Piston Pin
		<b>Note</b>			<b>Note</b>	28	690229	Pin-Piston
		694678 Crankshaft Used on Type No(s). 0130, 0140.			694005 Piston Assembly (.010" O.S.)	29	694691	Rod-Connecting
		695306 Crankshaft Used on Type No(s). 0126.			694007 Piston Assembly (.020" O.S.)	30	694692	Dipper-Connecting Rod
		695817 Crankshaft Used on Type No(s). 0049.			694009 Piston Assembly (.030" O.S.)	32	690976	Screw (Connecting Rod)
		695818 Crankshaft Used on Type No(s). 0035.	26	694004	Ring Set (Standard)	46	694680	Camshaft
24	222698	Key-Flywheel			<b>Note</b>	146	94388	Key-Timing
					694006 Ring Set (.010" O.S.)	287	94929	Screw (Dipstick/Tube Assembly)
					694008 Ring Set (.020" O.S.)	523	695344	Dipstick
					694010 Ring Set (.030" O.S.)	524	271485	O-Ring Seal (Dipstick Tube)
						525	695343	Tube-Dipstick
						741	691288	Gear-Timing
						842	280393	O-Ring Seal (Dipstick)
						847	695342	Dipstick/Tube Assembly

★ Included in Gasket Set-Ref. No. 358.  
 Δ Included in Valve Overhaul Kit-Ref. No. 1033.

● Included in Carburetor Overhaul Kit-Ref. No. 121.  
 ◆ Included in Carburetor Gasket Set-Ref. No. 977.

