

19F400 to 19F499

Illustrated Parts List

Model Series

19F400 to 19F499

TYPE NUMBERS

0043, 0112, 0132,
0133, 0136, 0144,
1043, 1101, 1132,
1133, 1136, 1137.

TO FIND

THE CORRECT NUMBER OF THE PART YOU NEED: FOLLOW THE INSTRUCTIONS BELOW

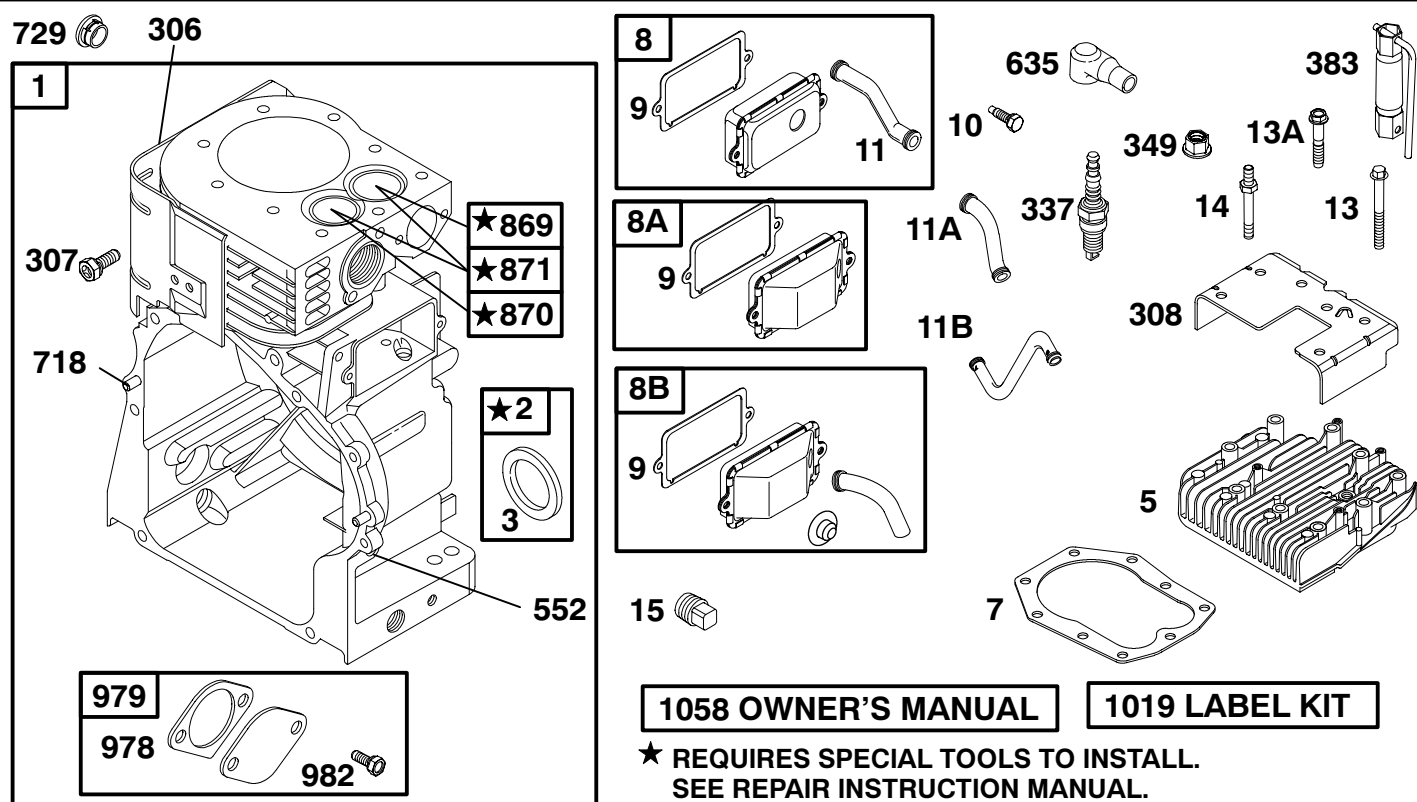
- A. Refer to Engine Model, Type and Code Number that is stamped on the blower housing of engine. Engine type numbers such as 0123 01 are listed only as 0123 in most instances. The two digits (01 or 02, etc.) to the right of the space may be required for more accurate parts identification in some instances. Select the Illustrated Parts List covering the correct Model Series and Type Number.
- B. Refer to the Illustrations and compare the original part with Illustration. The number next to the illustration is the Reference Number. Assemblies include all parts shown in frames. All parts shown in assembly frames having individual reference numbers can be purchased separately.
- C. After the Reference Number has been identified, refer to the Numerical text, where Reference and Primary Part Number are listed. **THE PRIMARY PART IS USED ON ALL TYPE NUMBERS EXCEPT THOSE TYPE NUMBERS UNDER "NOTE."**
- D. If a "Note" appears below the Primary Part Number, it means that this part differs from the Primary Part for certain types. If your Type number is listed under "Note," order the part referred to at the "Note."
- E. If your Engine Type Number does not appear after any part number listed under "Note," use the Primary Part Number.
- F. For Engine Type Numbers not covered by this book, check other Parts Lists having the same engine model or contact your source of supply.

PRINTED IN U.S.A.



COPYRIGHT by BRIGGS & STRATTON CORPORATION
All rights reserved. No part of this material may be reproduced or transmitted, in any form or by any means, electronic or mechanical, including photocopying, recording or by any information storage and retrieval system, without permission in writing from Briggs & Stratton Corporation.

19F400 to 19F499

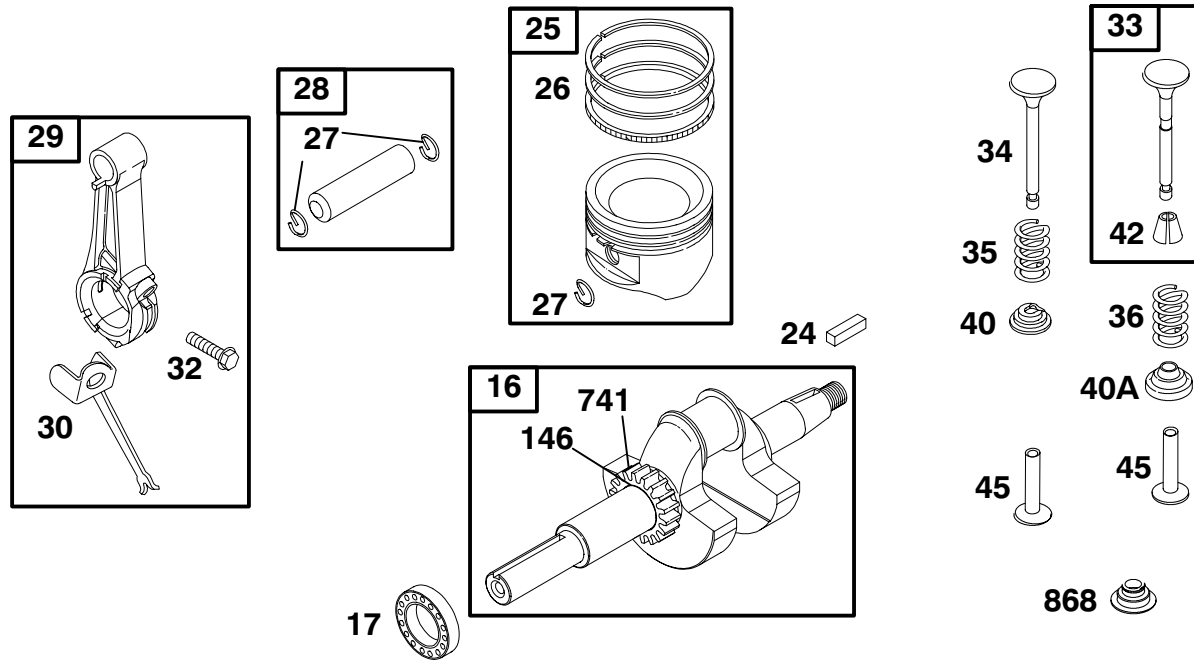


REF. NO.	PART NO.	DESCRIPTION	REF. NO.	PART NO.	DESCRIPTION	REF. NO.	PART NO.	DESCRIPTION
1	495656	Cylinder Assembly (Includes OIL GARD® Cover)	11A	280225	Tube-Breather (Used After Code Date 95010100 and Before Code Date 95040300).	552	491986	Bushing-Governor Crank
2	495657	Kit-Bushing/Seal (Magneto Side)	11B	281426	Tube-Breather (Used Before Code Date 94111100).	635	66538	Boot-Sparkplug
3	★391086	Seal-Oil (Magneto Side)	13	94565	Screw (Cylinder Head) (3 9/16" Long)	718	230192	Pin-Locating
5	214015	Head-Cylinder	13A	94622	Screw (Cylinder Head) (3" Long)	729	691336	Clip-Wire
7★	272163	Gasket-Cylinder Head	14	94926	Stud (Cylinder Head Used in Position #5 & #6.)	869	211661	Seat-Valve (Intake)
8	498038	Breather Assembly (Used After Code Date 95040200).	15	94239	Plug-Oil Drain ----- Note ----- 690289 Plug-Oil Drain (Magnetic)	870	262924	Seat-Valve (Exhaust)
8A	495736	Breather Assembly (Used After Code Date 95010100 and Before Code Date 95040300).	306	496797	Shield-Cylinder	871	261961	Bushing-Valve Guide (Exhaust) ----- Note ----- 231218 Bushing-Valve Guide (Intake)
8B	497710	Breather Assembly (Used Before Code Date 95010200).	307	94930	Screw (Cylinder Shield)	978	★273326	Gasket-Oil Gard®
9	★ 27803	Gasket-Breather	308	691201	Cover-Cylinder Head	979	691382	Cover-Oil Gard®
10	94621	Screw (Breather Assembly)	337	496018	Sparkplug	982	690351	Screw (OIL GARD® Cover)
11	280819	Tube-Breather (Used After Code Date 95040200).	349	691105	Nut (Cylinder Head Cover)	1019	497156	Kit-Label
			383	89838	Wrench-Sparkplug	1058	274786	Owner's Manual (Emission) ----- Note ----- 272848 Owner's Manual (Non Emission)

- ★ Included in Engine Gasket Set-See Ref. 358.
- Included in Carburetor Overhaul Kit-See Ref. No. 121.

- ◆ Included in Valve Gasket Set-See Ref. 1095.
- ◆ Included in Carburetor Gasket Set-See Ref. 977.

19F400 to 19F499

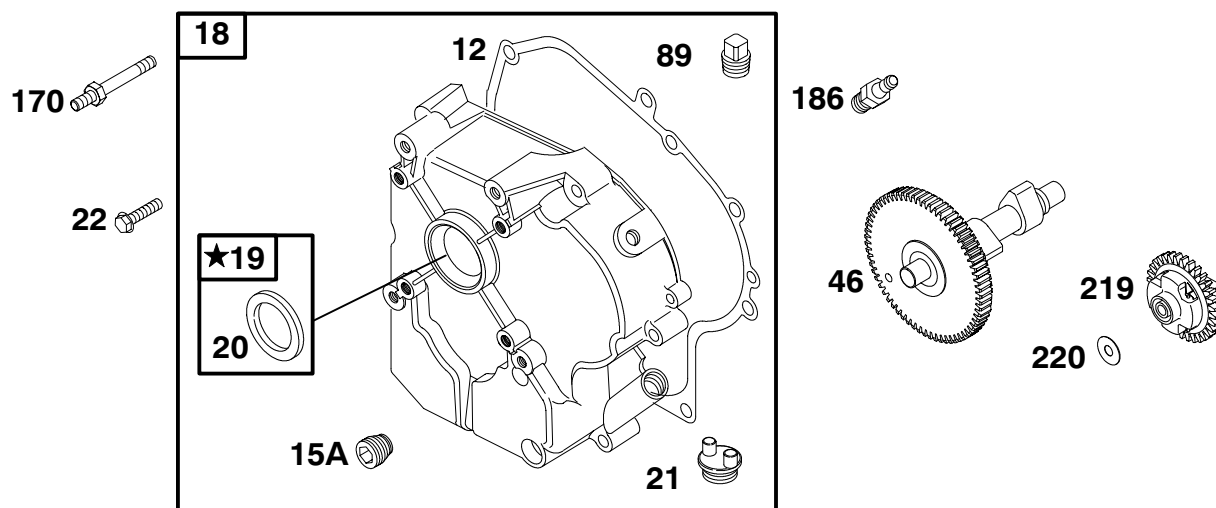


REF. NO.	PART NO.	DESCRIPTION	REF. NO.	PART NO.	DESCRIPTION	REF. NO.	PART NO.	DESCRIPTION
16	495790	Crankshaft ----- Note ----- 495884 Crankshaft Used on Type No(s). 0136, 0144, 1136. 497155 Crankshaft Used on Type No(s). 0112.	27	263181	Lock-Piston Pin (Used After Code Date 96102700). ----- Note ----- 691073 Lock-Piston Pin (Used Before Code Date 96102800).	29	390401	Rod-Connecting ----- Note ----- 390773 Rod- Connecting (.020" Undersize)
17	691069	Bearing-Ball	28	499302	Pin-Piston (Standard) (Used After Code Date 96102700). ----- Note ----- 499303 Pin-Piston (.005" O.S.) (Used After Code Date 96102700). 295840 Pin-Piston (Standard) (Used Before Code Date 96102800). 295841 Pin-Piston (.005" O.S.) (Used Before Code Date 96102800).	30	222113	Dipper-Connecting Rod
24	222698	Key-Flywheel				32	690352	Screw (Connecting Rod)
25	499960	Piston Assembly (Standard) ----- Note ----- 499961 Piston Assembly (.010" O.S.) 499962 Piston Assembly (.020" O.S.) 499963 Piston Assembly (.030" O.S.)				33	390420	Valve-Exhaust
26	690014	Ring Set (Standard) ----- Note ----- 299743 Ring Set (Standard, Chrome) 393882 Ring Set (.010" O.S.) 393883 Ring Set (.020" O.S.) 690017 Ring Set (.030" O.S.)				34	261055	Valve-Intake
						35	65906	Spring-Valve (Intake)
						36	26828	Spring-Valve (Exhaust)
						40	221596	Retainer-Valve
						40A	292260	Retainer-Valve
						42	494553	Keeper-Valve
						45	260933	Tappet-Valve
						146	94388	Key-Timing
						741	691288	Gear-Timing
						868	497656	Seal-Valve

★ Included in Engine Gasket Set-See Ref. 358.
● Included in Carburetor Overhaul Kit-See Ref. No. 121.

Included in Valve Gasket Set-See Ref. 1095.
◆ Included in Carburetor Gasket Set-See Ref. 977.

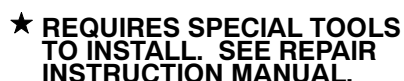
19F400 to 19F499



REF. NO.	PART NO.	DESCRIPTION	REF. NO.	PART NO.	DESCRIPTION	REF. NO.	PART NO.	DESCRIPTION
12	★271701	Gakset-Crankcase (.015" Standard) ----- Note ----- ★27876 Gasket-Crankcase (.005") ★27877 Gasket-Crankcase (.009")	19	295964	Kit-Bushing/Seal (PTO Side)	170	94931	Stud (Crankcase Cover Used in Position #1)
15A	94880	Plug-Oil Drain	20	★391086	Seal-Oil (PTO Side)	186	230318	Connector-Hose (Used After Code Date 94071700). ----- Note ----- 67218 Connector-Hose (Used Before Code Date 94071800).
18	496980	Cover-Crankcase ----- Note ----- 496983 Cover-Crankcase Used on Type No(s). 0136, 0144, 1136. 496981 Cover-Crankcase Used on Type No(s). 0043, 1101, 1043, 1137.	21	281658	Cap-Oil Fill	219	496786	Gear-Governor
			22	93585	Screw (Crankcase Cover) ----- Note ----- 691103 Screw (Crankcase Cover Used in Position #1) Used on Type No(s). 0043, 0144, 1043, 1101.	220	221551	Washer (Governor Gear)
			46	214786	Camshaft			
			89	690283	Plug-Oil Drain			

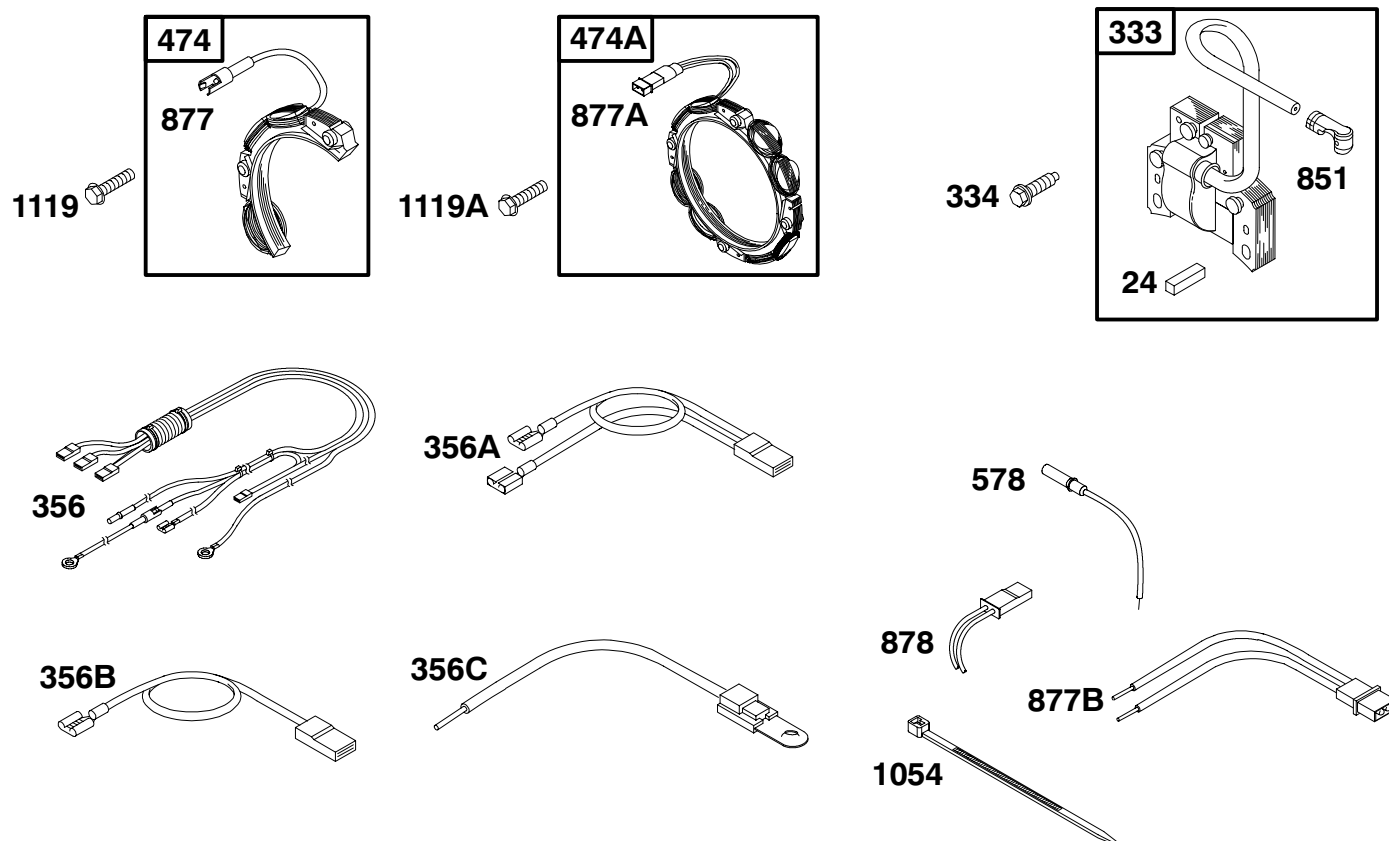
★ Included in Engine Gasket Set-See Ref. 358.
 ● Included in Carburetor Overhaul Kit-See Ref. No. 121.

◆ Included in Valve Gasket Set-See Ref. 1095.
 ◆ Included in Carburetor Gasket Set-See Ref. 977.



◆ Included in Carburetor Gasket Set-See Ref. 977.

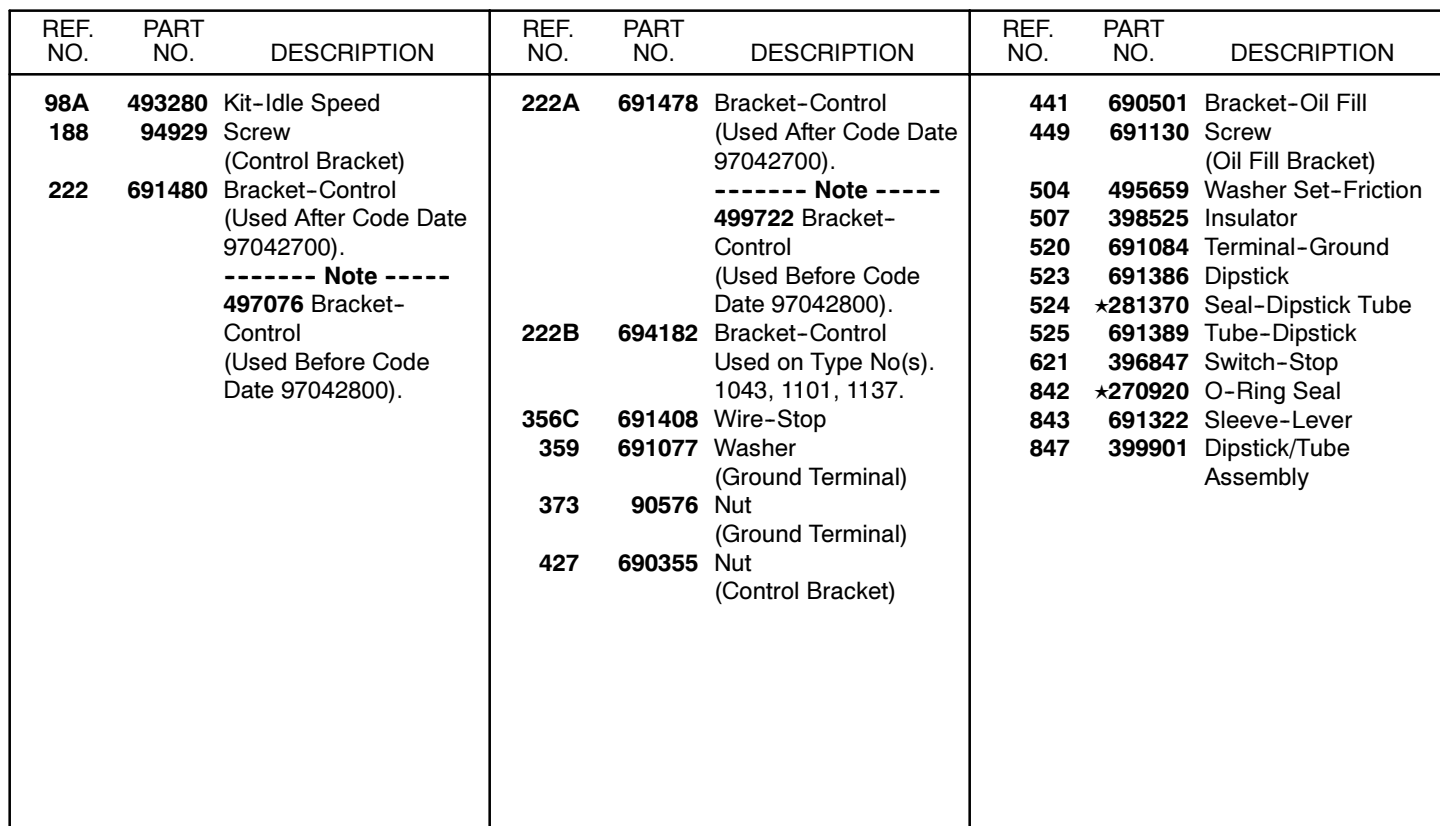
19F400 to 19F499



REF. NO.	PART NO.	DESCRIPTION	REF. NO.	PART NO.	DESCRIPTION	REF. NO.	PART NO.	DESCRIPTION
24	222698	Key-Flywheel	356B	491927	Wire-Stop (1 Wire, 1 Female Blade & 1 Insulated Male Blade Terminal)	877A	393456	Wire/Connector-Alternator (Dual Lead)
333	398811	Armature-Magneto				877B	399916	Wire/Connector-Alternator (Dual Lead)
334	94731	Screw (Magneto Armature)	356C	691408	Wire-Stop (Jumper, 1 Wire, Rounded Male Blade Terminal & 1 Bare Wire End)	878	393362	Harness-Alternator
356	691402	Wire-Stop (Harness Assembly)				1054	280275	Tie-Cable
		----- Note -----	474	391529	Alternator (DC Only)	1119	93621	Screw (Alternator)
		691403 Wire-Stop (Harness Assembly with Oil Guard Installed) Used on Type No(s). 0043, 1043, 1101, 1137.	474A	393474	Alternator (Dual Circuit)	1119A	94928	Screw (Alternator)
356A	398838	Wire-Stop (2 Wire, 2 Female Blade Terminals, 1 Insulated Male Blade Terminal)	578	393422	Wire Assembly			
			851	493880	Terminal-Sparkplug			
			877	393814	Wire/Connector-Alternator (Single Lead)			

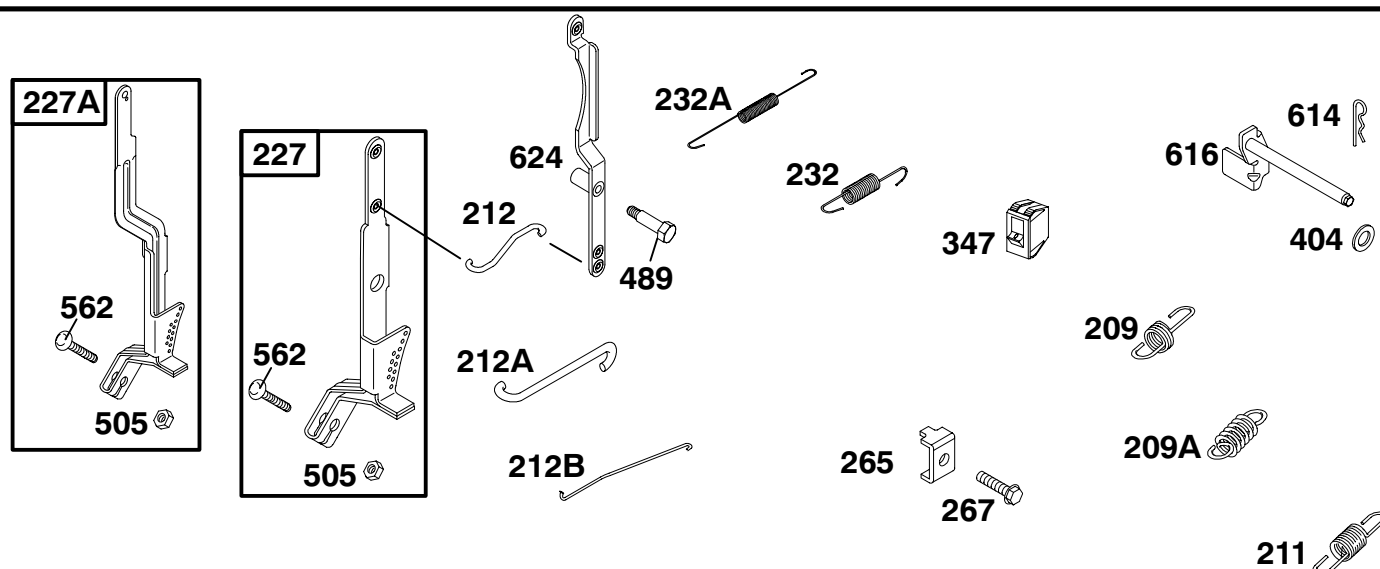
★ Included in Engine Gasket Set-See Ref. 358.
● Included in Carburetor Overhaul Kit-See Ref. No. 121.

◆ Included in Valve Gasket Set-See Ref. 1095.
◆ Included in Carburetor Gasket Set-See Ref. 977.



7

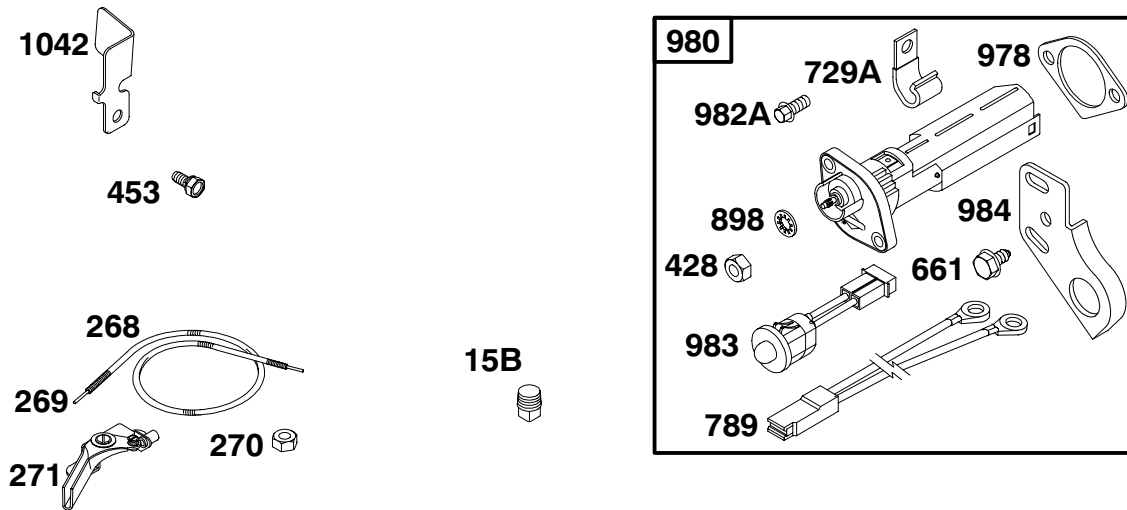
19F400 to 19F499



REF. NO.	PART NO.	DESCRIPTION	REF. NO.	PART NO.	DESCRIPTION	REF. NO.	PART NO.	DESCRIPTION
209	692136	Spring-Governor (Used After Code Date 97042700). Used on Type No(s). 0043, 0133, 0112, 0132, 1043, 1101, 1133, 1137. ----- Note ----- 691309 Spring-Governor (Used After Code Date 97042700). Used on Type No(s). 0136, 0144, 1136. 263054 Spring-Governor (Used Before Code Date 97042800). Used on Type No(s). 0136, 0144, 0043, 0133, 0112, 0132.	211	691307	Spring-Governed Idle (Used After Code Date 97042800). Used on Type No(s). 0136, 0144, 1136.	227A	496253	Lever-Governor Control (Long Lever)
			212	263049	Link-Throttle Linkage Lever to Throttle Shaft)	232	263020	Spring-Governor Link
			212A	263051	Link-Throttle (Governor Control Lever to Linkage Lever)	232A	262959	Spring-Governor Link
			212B	262970	Link-Throttle (Governor Control Lever to Throttle Shaft)	265	221535	Clamp-Casing
			227	692143	Lever-Governor Control (Short Lever With Governor Idle Eyelet) (Used After Code Date 97042700). ----- Note ----- 496254 Lever-Governor Control (Short lever) (Used Before Code Date 97042800).	267	690804	Screw (Casing Clamp)
209A	260723	Spring-Governor (Used Before Code Date 97042800). Used on Type No(s). 0133, 0112, 0132.				347	495098	Switch-Rocker
						404	691691	Washer (Governor Crank)
						489	231520	Screw (Linkage Lever)
						505	691251	Nut (Governor Control Lever)
						562	691119	Bolt (Governor Control Lever)
						614	93306	Pin-Cotter
						616	691405	Crank-Governor
						624	691415	Lever-Linkage

★ Included in Engine Gasket Set-See Ref. 358.
● Included in Carburetor Overhaul Kit-See Ref. No. 121.

◆ Included in Valve Gasket Set-See Ref. 1095.
◆ Included in Carburetor Gasket Set-See Ref. 977.

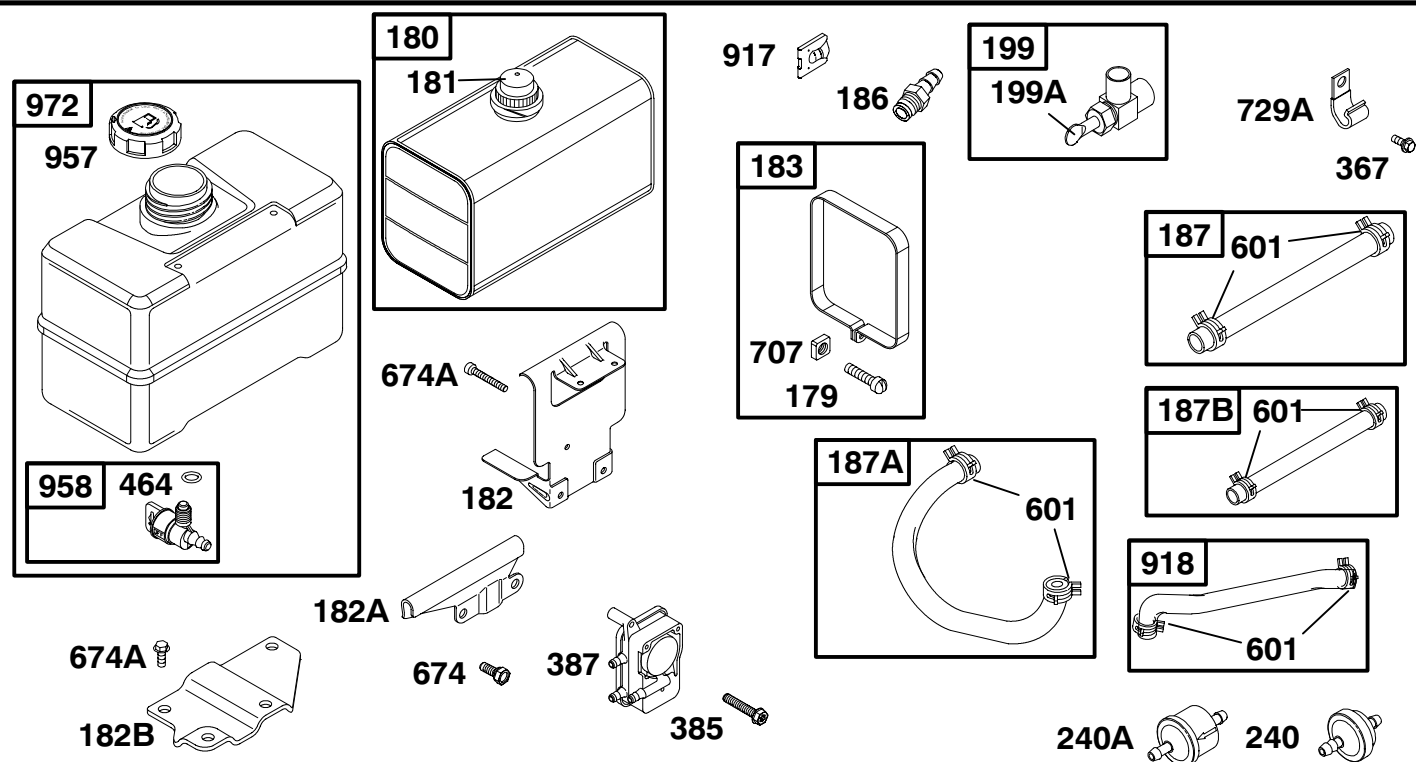


REF. NO.	PART NO.	DESCRIPTION	REF. NO.	PART NO.	DESCRIPTION	REF. NO.	PART NO.	DESCRIPTION
15B	94687	Plug-Oil Drain	453	691131	Screw (Electro Magnet Bracket)	980	398182	Kit-Oil Gard®
268	65616	Casing-Control Wire (Cut to Required Length)	661	94896	Screw (OIL GARD® Light Bracket)	----- Note -----		
269	26633	Wire-Control	729A	690430	Clip-Wire	982A	690350	Screw (OIL GARD® Kit)
270	63426	Nut (Control Wire Casing)	789	398661	Harness-Wiring	983	398660	Light-Indicator
271	290568	Lever-Control (Governor Crank)	898	691077	Washer (OIL GARD® Kit)	984	692340	Bracket-Oil Gard® Light
428	90576	Nut (OIL GARD® Kit) Used on Type No(s). 1043, 1137.	978	★273326	Gasket-Oil Gard®	1042	691229	Bracket- Electromagnetic

★ Included in Engine Gasket Set-See Ref. 358.
● Included in Carburetor Overhaul Kit-See Ref. No. 121.

◆ Included in Valve Gasket Set-See Ref. 1095.
◆ Included in Carburetor Gasket Set-See Ref. 977.

19F400 to 19F499



REF. NO.	PART NO.	DESCRIPTION	REF. NO.	PART NO.	DESCRIPTION	REF. NO.	PART NO.	DESCRIPTION
179	690280	Screw (Fuel Tank Strap)	187B	499167	Line-Fuel Used on Type No(s). 0136, 0144.	601	95162	Clamp-Hose
180	291488	Tank-Fuel				674	94627	Screw (Fuel Tank Bracket)
181	392305	Cap-Fuel Tank	199	297563	Valve-Fuel Shut Off	674A	690708	Screw (Fuel Tank Bracket)
182	691199	Bracket-Fuel Tank	199A	293934	Valve-Fuel Shut Off	707	690279	Nut (Fuel Tank Strap)
182A	690486	Bracket-Fuel Tank	240	394358	Filter-Fuel	729A	690430	Clip-Wire
182B	691174	Bracket-Fuel Tank	240A	493629	Filter-Fuel	917	223271	Handle-Shut Off Valve
183	291490	Strap-Fuel Tank	367	94627	Screw (Wire Clip)	918	497457	Hose-Vacuum
186	230318	Connector-Hose	385	94789	Screw (Fuel Pump)	957	493988	Cap-Fuel Tank
187	296004	Line-Fuel (Cut to Required Length)	387	496257	Pump-Fuel	958	399517	Valve-Fuel Shut Off
187A	497029	Line-Fuel (Molded)	464	280203	O-Ring Seal (Fuel Shut Off Valve)	972	493337	Tank-Fuel

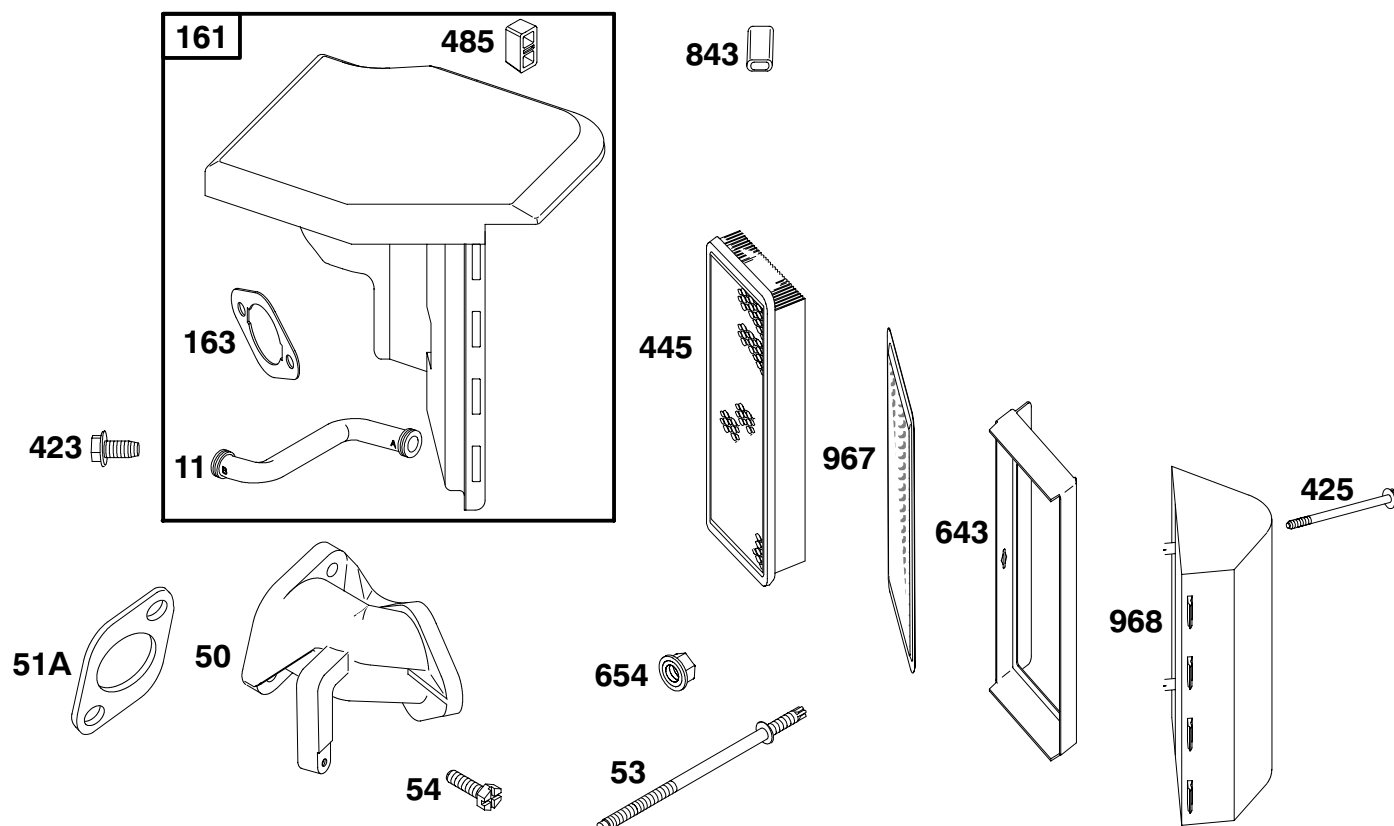
★ Included in Engine Gasket Set-See Ref. 358.
● Included in Carburetor Overhaul Kit-See Ref. No. 121.

◆ Included in Carburetor Gasket Set-See Ref. 977.

0481-10

Assemblies include all parts shown in frames.

2Q-7/2000

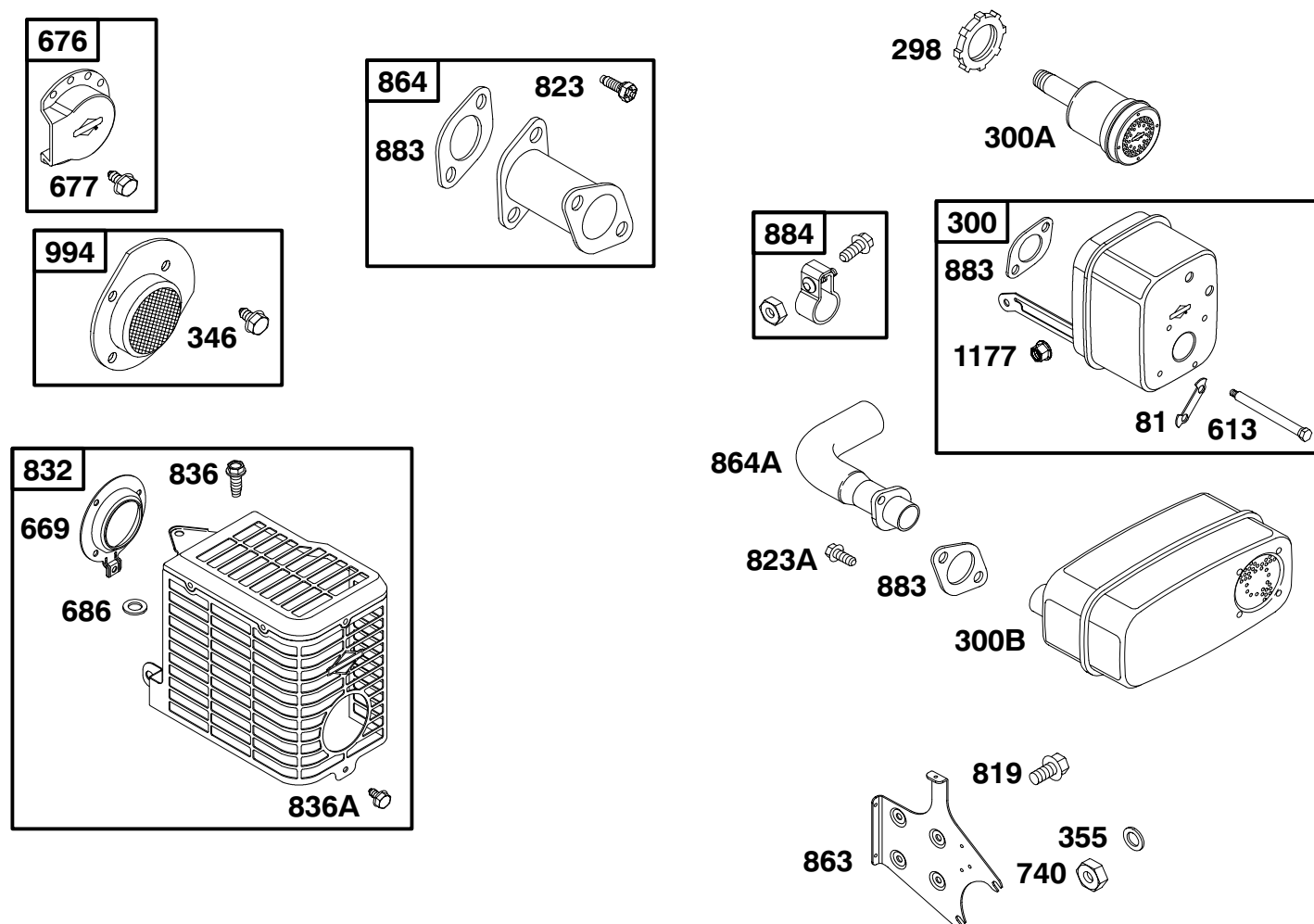


REF. NO.	PART NO.	DESCRIPTION	REF. NO.	PART NO.	DESCRIPTION	REF. NO.	PART NO.	DESCRIPTION
11	280819	Tube-Breather (Used After Code Date 95010100). ----- Note ----- 281426 Tube-Breather (Used Before Code Date 95010200).	53	94778	Stud (Carburetor)	445	496077	Filter-Air Cleaner Cartridge
50	691157	Manifold-Intake	54	94913	Screw (Intake Manifold)	485	280715	Knob-Control
51A	★272707	Gasket-Intake	161	498544	Base-Air Cleaner	643	281358	Retainer-Air Filter
			163	★273101	Gasket-Air Cleaner	654	94010	Nut (Carburetor)
			423	94930	Screw (Air Cleaner Base)	843	280149	Sleeve-Lever
			425	94777	Screw (Air Cleaner Cover)	967	492889	Filter-Pre Cleaner
						968	281357	Cover-Air Cleaner

★ Included in Engine Gasket Set-See Ref. 358.
● Included in Carburetor Overhaul Kit-See Ref. No. 121.

◆ Included in Valve Gasket Set-See Ref. 1095.
◆ Included in Carburetor Gasket Set-See Ref. 977.

19F400 to 19F499



REF. NO.	PART NO.	DESCRIPTION	REF. NO.	PART NO.	DESCRIPTION	REF. NO.	PART NO.	DESCRIPTION
81	222263	Lock-Muffler Screw	669	691228	Bracket-Muffler Guard	823A	94905	Screw (Muffler Adapter)
298	261409	Locknut-Muffler/Elbow (Muffler)	676	393761	Deflector-Muffler (Side Out) Used on Type No(s). 1137.	832	691447	Guard-Muffler
300	497141	Muffler (Super Lo Tone)	677	94896	Screw (Muffler Deflector)	836	94786	Screw (Muffler Guard)
300A	496127	Muffler (Round Lo Tone)	686	691113	Washer (Muffler Guard Bracket)	836A	94896	Screw (Muffler Guard)
300B	498984	Muffler (25 Super Lo Tone)	740	691105	Nut (Muffler Bracket)	863	690454	Bracket-Muffler
346	94896	Screw (Spark Arrester)	819	690297	Screw (Muffler Bracket)	864	497140	Adapter-Muffler
355	690310	Washer (Muffler Bracket)	823	94706	Screw (Muffler Adapter)	864A	690797	Adapter-Muffler
613	94054	Screw (Super Lo Tone Muffler)				883	★272309	Gasket-Exhaust
						884	392649	Clamp-Muffler
						994	399541	Arrestor-Spark
						1177	691105	Nut (Exhaust Muffler)

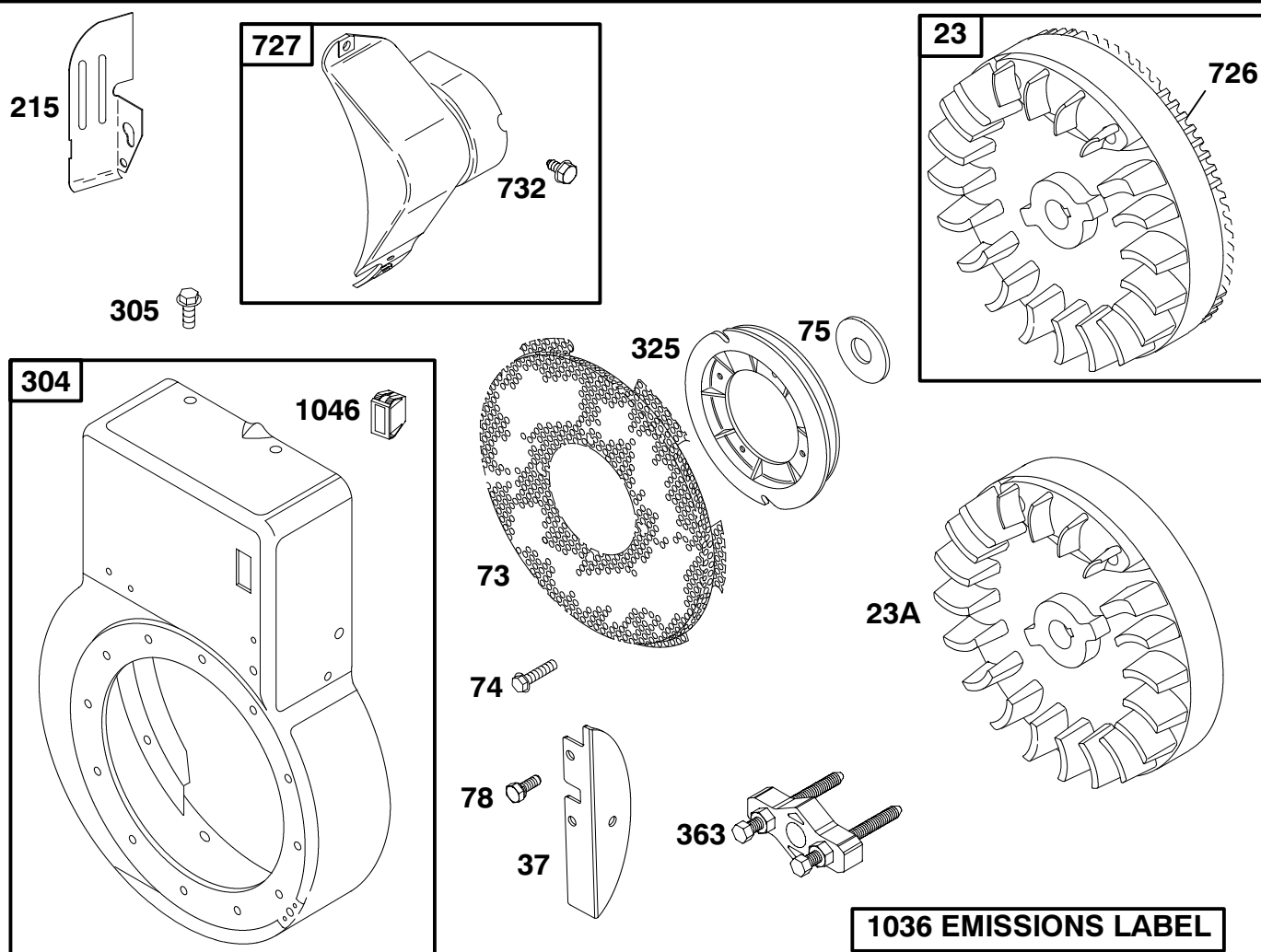
★ Included in Engine Gasket Set-See Ref. 358.

● Included in Carburetor Overhaul Kit-See Ref. No. 121.

Included in Valve Gasket Set-See Ref. 1095.

◆ Included in Carburetor Gasket Set-See Ref. 977.

19F400 to 19F499

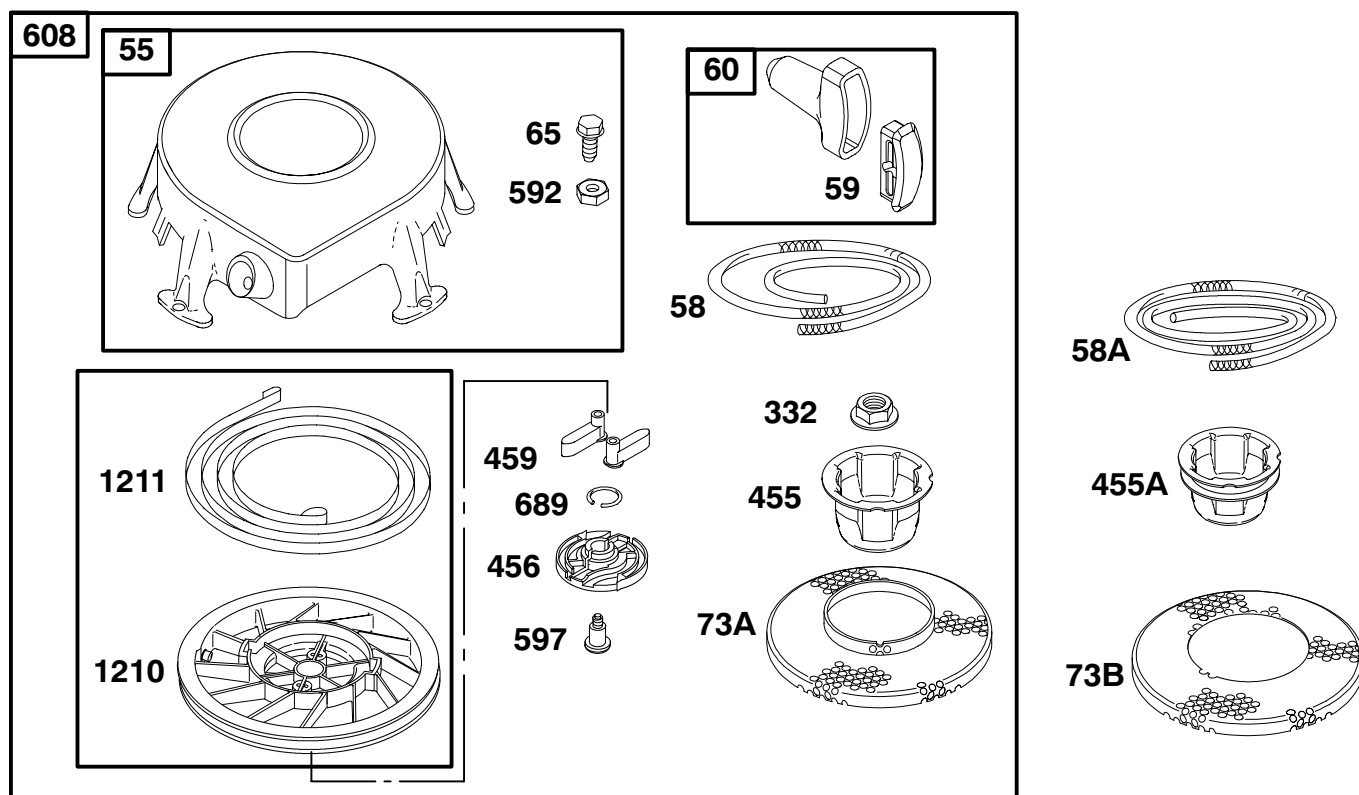


REF. NO.	PART NO.	DESCRIPTION	REF. NO.	PART NO.	DESCRIPTION	REF. NO.	PART NO.	DESCRIPTION
23	691354	Flywheel (Electric Start)	305	94786	Screw (Blower Housing)			694313 Label-Emissions (Used Before Code Date 99100100 and After Code Date 98123100).
23A	690615	Flywheel (Rewind Start)	325	280457	Pulley-Rope Starter			499354 Label-Emissions (Used Before Code Date 99010100) Used on Type No(s). 1132, 1133, 1136.
37	690411	Guard-Flywheel	363	19203	Flywheel Puller			
73	224874	Screen-Rotating	726	399676	Gear-Ring			
74	94928	Screw (Rotating Screen)	727	395405	Cover-Starter Drive			
75	690582	Washer (Flywheel)	732	691097	Screw (Starter Drive Cover)			
78	690364	Screw (Flywheel Guard)	1036	695696	Label-Emissions (Used After Code Date 00070100).			
215	691170	Guide-Air			----- Note -----			
304	497143	Housing-Blower			694988 Label-Emissions (Used Before Code Date 00070100 and After Code Date 9909300).			
		----- Note -----				1046	691337	Plug-Blower Housing
		497142 Housing-Blower						
		Used on Type No(s). 0136, 0144, 1043, 1101, 1133, 1136, 1137.						

★ Included in Engine Gasket Set-See Ref. 358.
 ● Included in Carburetor Overhaul Kit-See Ref. No. 121.

◆ Included in Valve Gasket Set-See Ref. 1095.
 ◆ Included in Carburetor Gasket Set-See Ref. 977.

19F400 to 19F499

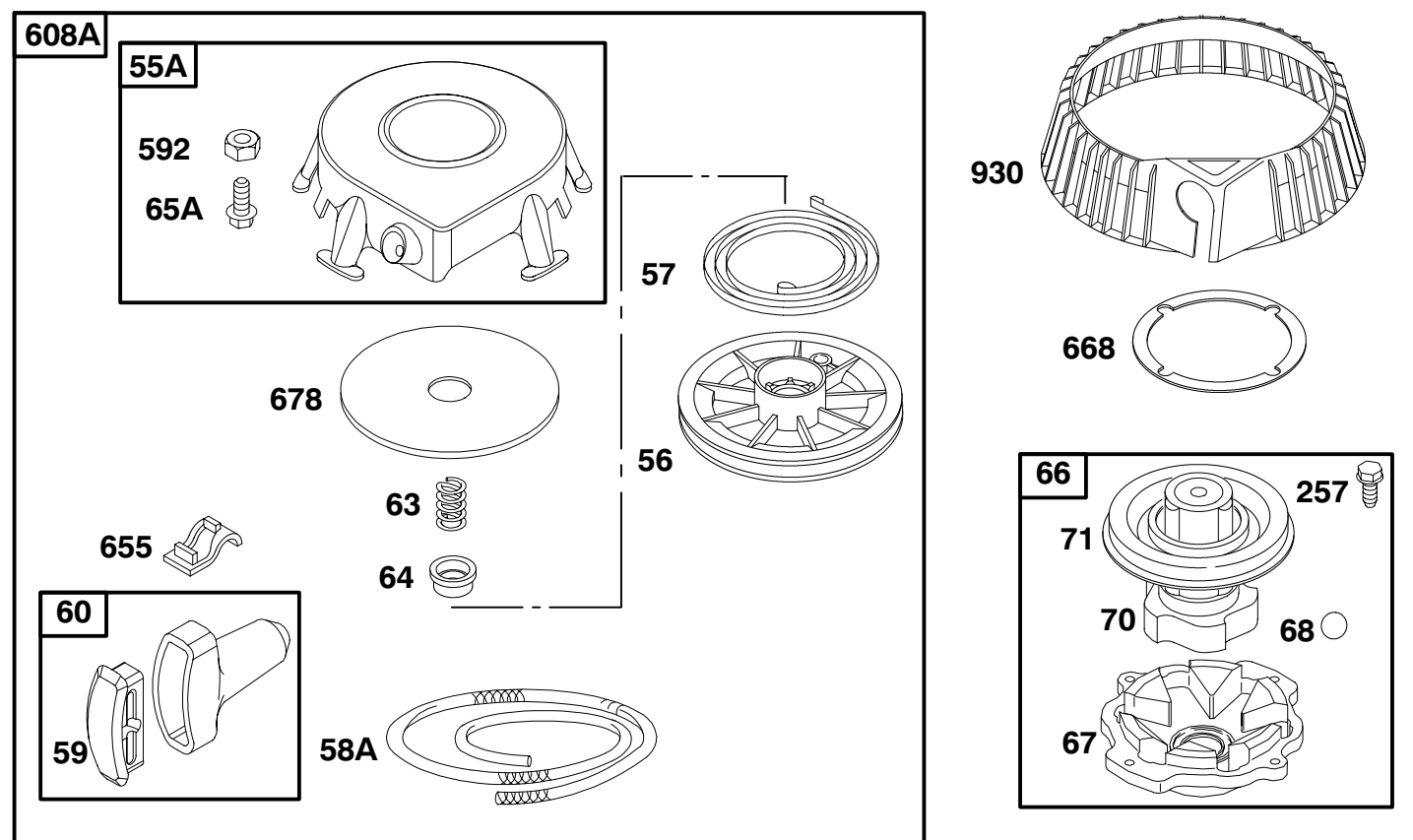


REF. NO.	PART NO.	DESCRIPTION	REF. NO.	PART NO.	DESCRIPTION	REF. NO.	PART NO.	DESCRIPTION
55	693904	Housing-Rewind Starter (Used After Code Date 98111500).	73A	693905	Screen-Rotating	608	693900	Starter-Rewind (63" Length Rope) (Used After Code Date 98111500).
58	66884	Rope-Starter (63" Length, Cut to Required Length)	73B	694020	Screen-Rotating (Used with 99" Rope)	689	263073	Spring-Friction
58A	66894	Rope-Starter (99" Length, Cut to Required Length)	332	693899	Nut (Flywheel)	1210	498144	Pulley/Spring Assembly (Pulley) (Used After Code Date 98111500).
59	490653	Insert-Grip	455	693902	Cup-Flywheel	1211	498144	Pulley/Spring Assembly (Spring) (Used After Code Date 99111500).
60	490652	Grip-Starter Rope	455A	694017	Cup-Flywheel (Used with 99" Rope)			
65	94904	Screw (Rewind Starter) (Used After Code Date 98111500).	456	281503	Plate-Pawl Friction			
			459	281505	Pawl-Ratchet			
			592	94908	Nut (Rewind-Starter)			
			597	94943	Screw (Pawl Friction Plate)			

★ Included in Engine Gasket Set-See Ref. 358.
● Included in Carburetor Overhaul Kit-See Ref. No. 121.

◆ Included in Valve Gasket Set-See Ref. 1095.
◆ Included in Carburetor Gasket Set-See Ref. 977.

19F400 to 19F499

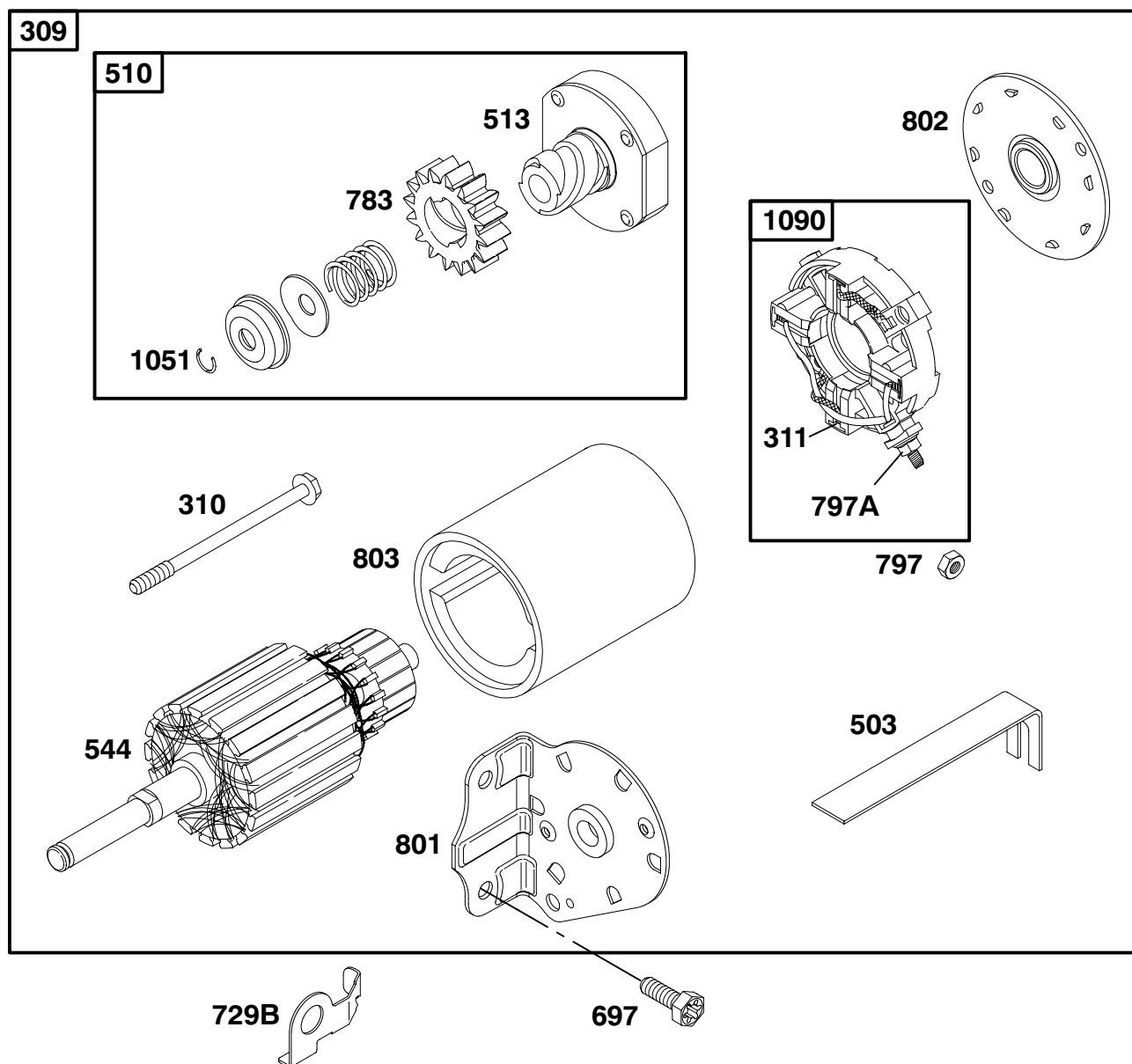


REF. NO.	PART NO.	DESCRIPTION	REF. NO.	PART NO.	DESCRIPTION	REF. NO.	PART NO.	DESCRIPTION
55A	393576	Housing-Rewind Starter (Used Before Code Date 98111600).	59	490653	Insert-Grip	71	691359	Cover-Ratchet
			60	490652	Grip-Starter Rope	257	94680	Screw (Starter Clutch)
			63	260414	Spring-Ratchet	592	94908	Nut (Rewind Starter)
56	295871	Pulley-Starter (Used Before Code Date 98111600).	64	281204	Adapter-Ratchet Spring	608A	390391	Starter-Rewind (Used Before Code Date 98111600).
57	490179	Spring-Rewind Starter (Used Before Code Date 98111600).	65A	94686	Screw (Rewind Starter) (Used Before Code Date 98111600).	655	222598	Anchor-Rewind Spring
58A	66894	Rope-Starter (63" Cut to Required Length)	66	399671	Clutch-Starter	668	690500	Spacer
			67	394897	Housing-Clutch	678	490817	Spacer-Rewind
			68	63770	Ball-Clutch	930	280685	Guard-Rewind
			70	298799	Ratchet-Clutch			

★ Included in Engine Gasket Set-See Ref. 358.
 ● Included in Carburetor Overhaul Kit-See Ref. No. 121.

◆ Included in Valve Gasket Set-See Ref. 1095.
 ◆ Included in Carburetor Gasket Set-See Ref. 977.

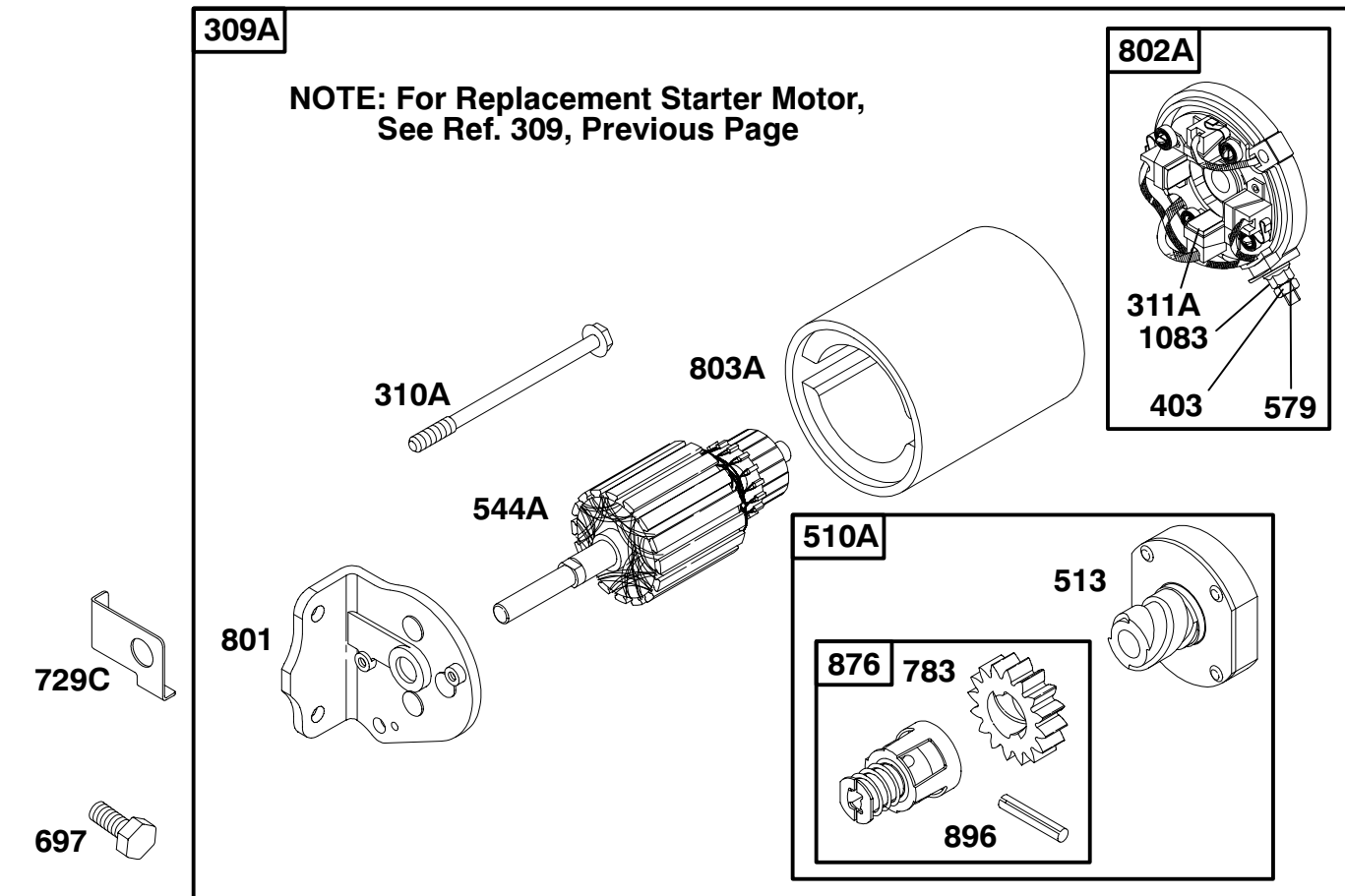
19F400 to 19F499



REF. NO.	PART NO.	DESCRIPTION	REF. NO.	PART NO.	DESCRIPTION	REF. NO.	PART NO.	DESCRIPTION
309	693054	Motor-Starter	544	497603	Armature-Starter	797A	693167	Nut (Brush Retainer)
310	690323	Bolt (Starter Motor)	697	690372	Screw (Drive Cap)	801	394856	Cap-Drive
311	497608	Brush Set	729B	691224	Clip-Wire	802	497607	Cap-End
503	691532	Strap-Starter	783	693059	Gear-Pinion	803	693757	Housing-Starter
510	497606	Drive-Starter	797	92278	Nut (Brush Retainer)	1051	263080	Ring-Retaining
513	398003	Clutch-Drive				1090	497605	Retainer-Brush

★ Included in Engine Gasket Set-See Ref. 358.
 ● Included in Carburetor Overhaul Kit-See Ref. No. 121.

◆ Included in Valve Gasket Set-See Ref. 1095.
 ◆ Included in Carburetor Gasket Set-See Ref. 977.



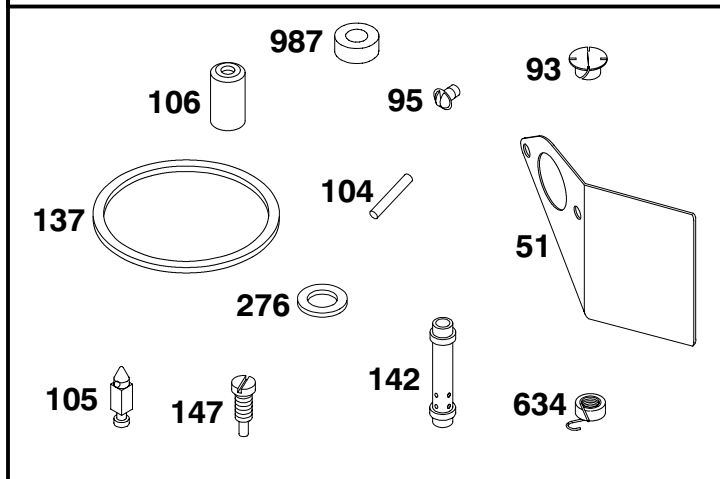
REF. NO.	PART NO.	DESCRIPTION	REF. NO.	PART NO.	DESCRIPTION	REF. NO.	PART NO.	DESCRIPTION
309A		Motor-Starter (For Replacement Starter Motor, See Ref 309, Previous Page)	403	690233	Washer (End Cap)	783	693059	Gear-Pinion
310A	690323	Bolt (Starter Motor) (3 5/8" Housing)	510A	495878	Drive-Starter	801	394856	Cap-Drive
311A	395538	Brush Set (3 5/8" Housing)	513	398003	Clutch-Drive	802A	395537	Cap-End (3 5/8" Housing)
			544A	390837	Armature-Starter (3 5/8" Housing)	803A	398159	Housing-Starter (3 5/8" Housing)
			579	93715	Nut (Starter Cable)	876	495877	Kit-Pinion Spring
			697	690372	Screw (Drive Cap)	896	94288	Pin-Drive Retainer
			729C	224723	Clip-Wire	1083	94010	Nut (End Cap)

★ Included in Engine Gasket Set-See Ref. 358.
● Included in Carburetor Overhaul Kit-See Ref. No. 121.

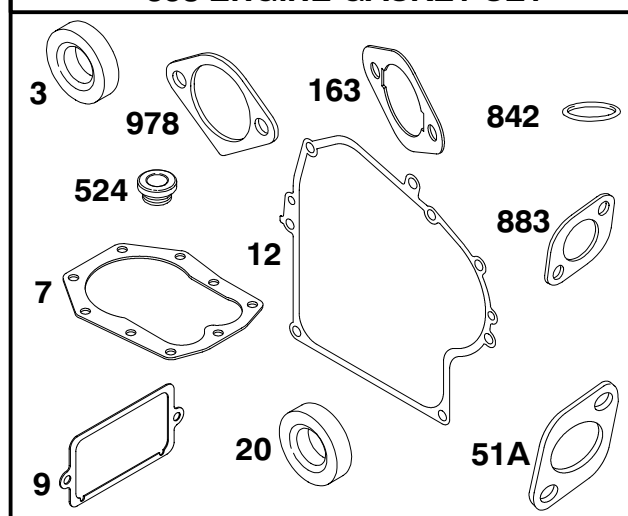
◆ Included in Valve Gasket Set-See Ref. 1095.
◆ Included in Carburetor Gasket Set-See Ref. 977.

19F400 to 19F499

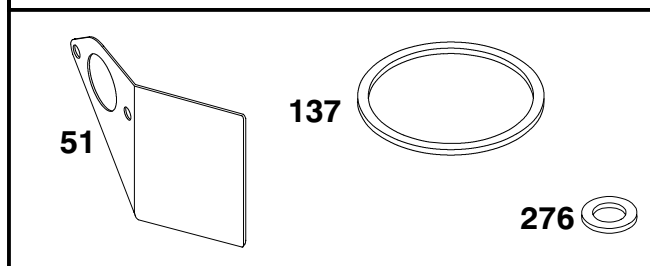
121 CARBURETOR OVERHAUL KIT



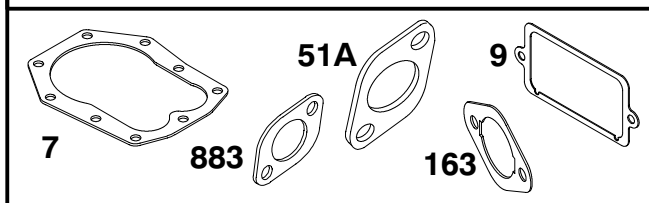
358 ENGINE GASKET SET



977 CARBURETOR GASKET SET



1095 VALVE GASKET SET



REF. NO.	PART NO.	DESCRIPTION	REF. NO.	PART NO.	DESCRIPTION	REF. NO.	PART NO.	DESCRIPTION
3	★391086	Seal-Oil (Magneto Side)	95	●94098	Screw (Throttle Valve)	147	●497472	Jet-Pilot (High Altitude, LMT 102, 113, 114, 116).
7	★272163	Gasket-Cylinder Head	104	●690525	Pin-Float Hinge	163	★273101	Gasket-Air Cleaner
9	★27803	Gasket-Breather	105	●231935	Valve-Float Needle	276	●★281164	Washer-Sealing
12	★271701	Gasket-Crankcase (.015" Thick, Standard)	106	●231856	Seat-Inlet	358	497070	Gasket Set-Engine
----- Note -----			121	497849	Kit-Carburetor Overhaul (Used After Code Date 94062300).	524	★281370	Seal-Dipstick Tube
		★27876 Gasket-Crankcase (.005" Thick)	----- Note -----			634	●690802	Spring/Seal Assembly
		★27877 Gasket-Crankcase (.009" Thick)			497166 Kit-Carburetor Overhaul (Used Before Code Date 94062400).	842	★270920	O-Ring Seal
20	★391086	Seal-Oil (PTO Side)	137	●★281165	Gasket-Float Bowl	883	★272309	Gasket-Exhaust
51	●★272708	Gasket-Intake	142	●497564	Nozzle-Carburetor (Standard LMT 113, 114, 116).	977	497069	Gasket Set-Carburetor
51A	★272707	Gasket-Intake				978	★273326	Gasket-Oil Gard®
93	●690602	Bushing-Throttle Shaft				987	●691326	Seal-Throttle Shaft
						1095	498534	Gasket Set-Valve

★ Included in Engine Gasket Set-See Ref. 358.
● Included in Carburetor Overhaul Kit-See Ref. No. 121.

● Included in Valve Gasket Set-See Ref. 1095.
◆ Included in Carburetor Gasket Set-See Ref. 977.