

**176400 to 176499**

# **Illustrated Parts List**

## **Model Series**

### **176400 to 176499**

**TYPE NUMBERS**

0035, 0049, 0050,  
0101, 0103, 0113,  
0114, 0115, 0116.

**TO FIND****THE CORRECT NUMBER OF THE PART YOU NEED:  
FOLLOW THE INSTRUCTIONS BELOW**

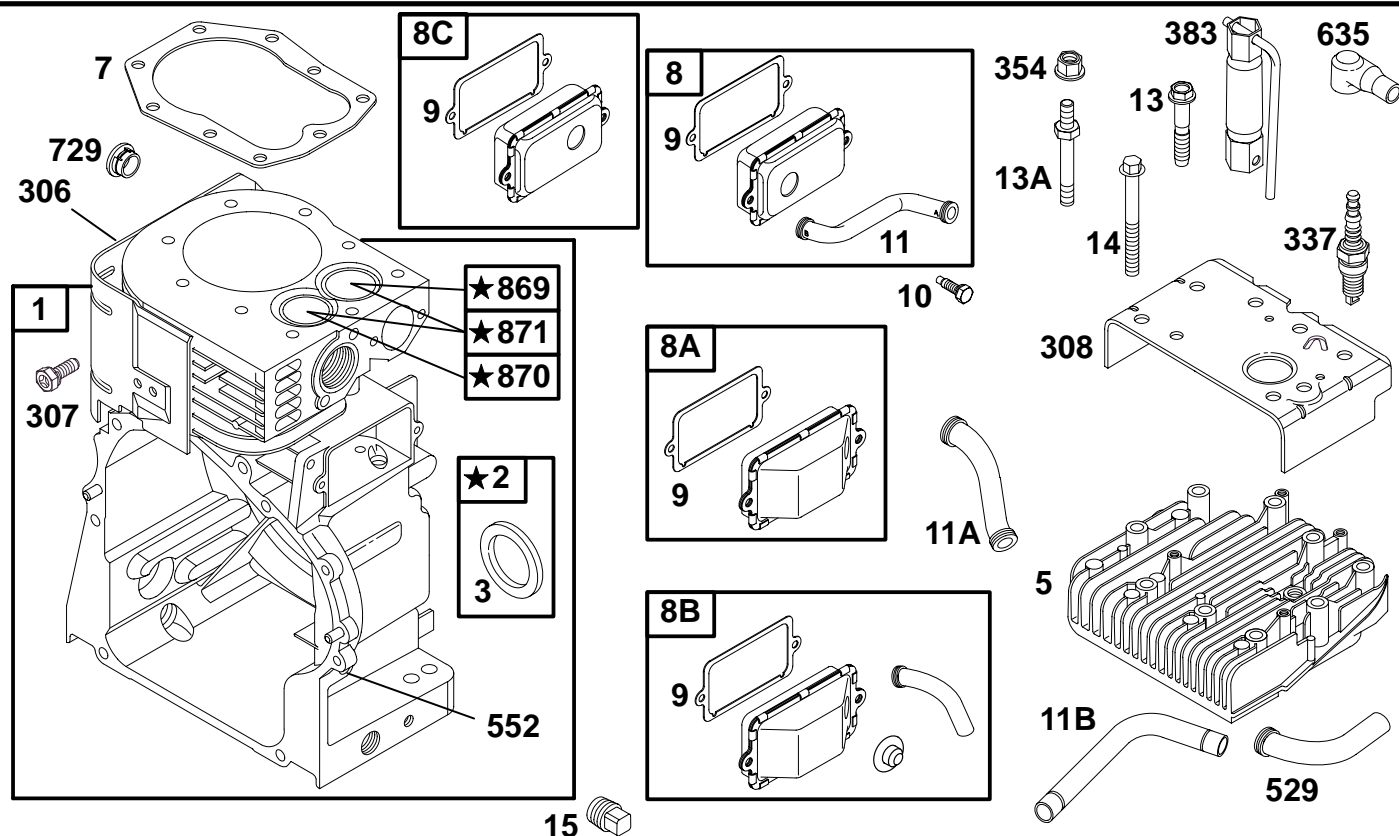
- A. Refer to Engine Model, Type and Code Number that is stamped on the blower housing of engine. Engine type numbers such as 0123 01 are listed only as 0123 in most instances. The two digits (01 or 02, etc.) to the right of the space may be required for more accurate parts identification in some instances. Select the Illustrated Parts List covering the correct Model Series and Type Number.
- B. Refer to the Illustrations and compare the original part with Illustration. The number next to the illustration is the Reference Number. Assemblies include all parts shown in frames. All parts shown in assembly frames having individual reference numbers can be purchased separately.
- C. After the Reference Number has been identified, refer to the Numerical text, where Reference and Primary Part Number are listed. **THE PRIMARY PART IS USED ON ALL TYPE NUMBERS EXCEPT THOSE TYPE NUMBERS UNDER "NOTE."**
- D. If a "Note" appears below the Primary Part Number, it means that this part differs from the Primary Part for certain types. If your Type number is listed under "Note," order the part referred to at the "Note."
- E. If your Engine Type Number does not appear after any part number listed under "Note," use the Primary Part Number.
- F. For Engine Type Numbers not covered by this book, check other Parts Lists having the same engine model or contact your source of supply.

PRINTED IN U.S.A.



COPYRIGHT by BRIGGS & STRATTON CORPORATION  
All rights reserved. No part of this material may be reproduced or transmitted, in any form or by any means, electronic or mechanical, including photocopying, recording or by any information storage and retrieval system, without permission in writing from Briggs & Stratton Corporation.

# 176400 to 176499


**1058 OWNER'S MANUAL**
**1019 LABEL KIT**

★ **REQUIRES SPECIAL TOOLS TO INSTALL.**  
SEE REPAIR INSTRUCTION MANUAL.

| REF. NO. | PART NO. | DESCRIPTION   | REF. NO. | PART NO. | DESCRIPTION  | REF. NO. | PART NO. | DESCRIPTION  |
|----------|----------|---|----------|----------|--|----------|----------|--|
| 1        | 495656   | Cylinder Assembly<br>(Includes OIL GARD® Cover)                                     | 11A      | 280225   | Tube-Breather  | 354      | 94726    | Nut-Hex  |
| 2        | 495657   | Bushing   | 11B      | 281426   | Tube-Breather  | 383      | 89838    | Wrench-Spark Plug  |
| 3        | ★391086  | Seal-Oil  | 13       | 94565    | Screw-Hex.<br>(2 5/8" Long)                              | 529      | 281367   | Grommet  |
| 5        | 214014   | Head-Cylinder   | 13A      | 94733    | Stud-Hex. Drive<br>(3 5/16" Long)<br>#5, & #6 Positions) | 552      | 491986   | Bushing-Gov. Crank<br><b>Include(s):</b><br>491323 Seal-Gov. Shaft |
| 7        | Ø★272163 | Gasket-Cylinder Head  |          |          | <b>Note</b>  | 635      | 66538    | Boot-Spark Plug  |
| 8        | 498038   | Breather Assembly<br>(Used After Code Date 95040200).                               |          |          | 94776 Stud-Hex. Drive<br>(3 9/16" Long)<br>(#1 Position) | 729      | 281396   | Clip-Wire  |
| 8A       | 495736   | Breather Assembly<br>(Used After Code Date 95010100 and Before Code Date 95040300). | 14       | 94622    | Screw-Hex.<br>(3" Long)                                  | 869      | 211661   | Seat-Valve<br>(Intake)   |
| 8B       | 497710   | Breather Kit<br>(Used Before Code Date 95010200).                                   | 15       | 94239    | Plug-Oil Drain<br><b>Note</b>                            | 870      | 262924   | Seat-Valve<br>(Exhaust)  |
| 8C       | 495724   | Breather Assembly   |          |          | 92738 Plug-Oil Drain<br>(Magnetic)                       | 871      | 261961   | Bushing-Guide<br>(Exhaust Valve)<br><b>Note</b>                    |
| 9        | Ø★27803  | Gasket-Breather   | 306      | 496797   | Shield-Cylinder  |          |          | 231218 Bushing-Guide<br>(Intake Valve)                             |
| 10       | 94621    | Screw-Hex.  | 307      | 94386    | Screw-Hex.   | 1019     | 497156   | Label Kit  |
| 11       | 280819   | Tube-Breather   | 308      | 224896   | Cover-Cylinder   | 1058     | 272848   | Owner's Manual   |
|          |          |   | 337      | 802592   | Plug-Spark   |          |          |  |

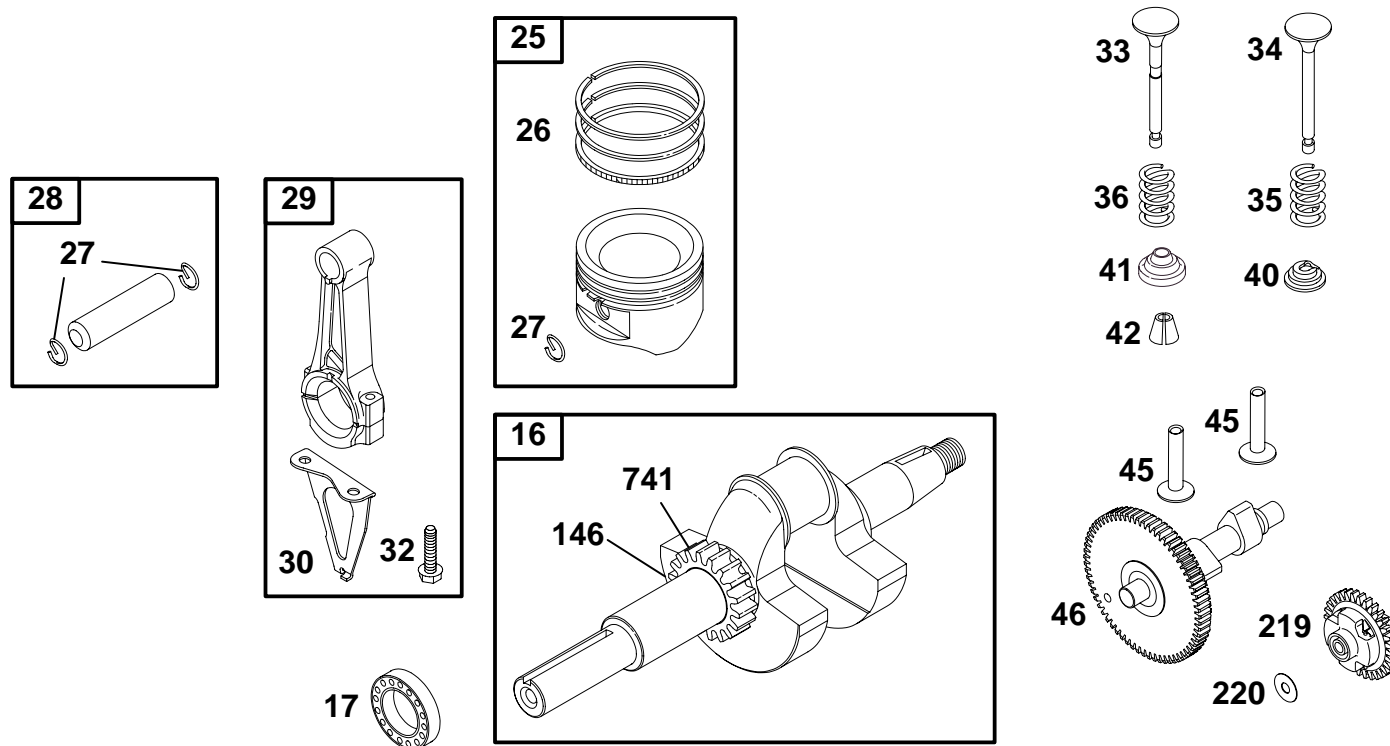
★ Included in Gasket Set-Part No. 497070.

● Included in Carburetor Kit-See Ref. No. 121.

◆ Included in Carburetor Gasket Set-Part No. 497069.

Ø Included in Valve Overhaul Gasket Set-Part No. 498534.

# 176400 to 176499

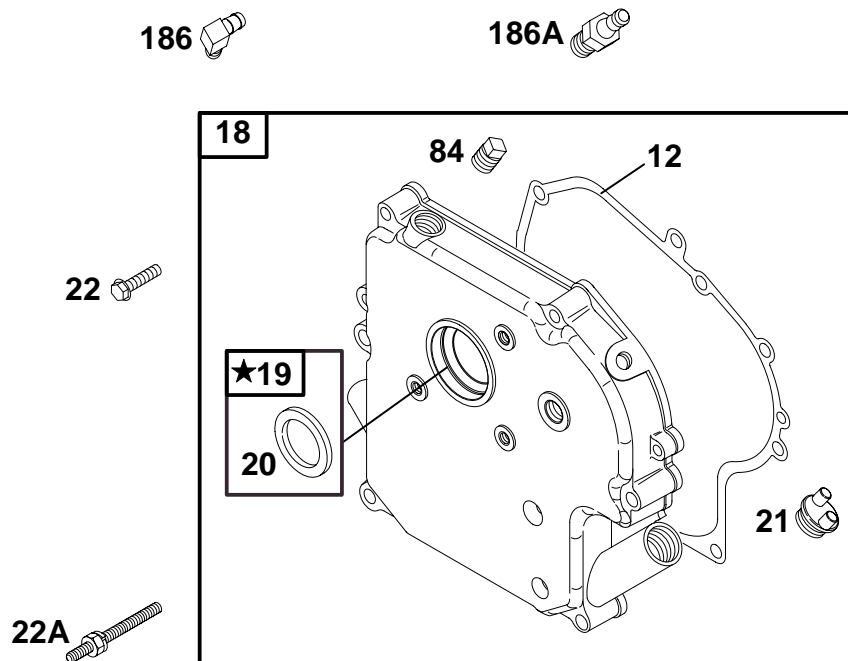


| REF. NO. | PART NO. | DESCRIPTION  | REF. NO. | PART NO. | DESCRIPTION  | REF. NO. | PART NO. | DESCRIPTION  |
|----------|----------|--|----------|----------|--|----------|----------|--|
| 16       | 495733   | Crankshaft<br>—— <b>Note</b> ——<br>495723 Crankshaft<br>Used on Type No(s).<br>0049, 0103, 0050.<br>495775 Crankshaft<br>Used on Type No(s).<br>0113, 0114.              | 27       | 263181   | Lock-Piston Pin<br>—— <b>Note</b> ——<br>68546 Lock-Piston Pin<br>(Used Before Code<br>Date 96102800).  | 34       | 261055   | Valve-Intake   |
| 17       | 29530    | Bearing-Ball   | 28       | 499302   | Pin-Piston<br>(Standard)<br>—— <b>Note</b> ——<br>499303 Pin-Piston<br>(.005" O.S.)<br>295840 Pin-Piston<br>(Standard)<br>(Used Before Code<br>Date 96102800).<br>295841 Pin-Piston<br>(.005" O.S.)<br>(Used Before Code<br>Date 96102800). | 35       | 65906    | Spring-Valve<br>(Intake)   |
| 25       | 393868   | Piston Assembly<br>(Standard)<br>393869 Piston Assy.<br>(.010" O.S.)<br>393879 Piston Assy.<br>(.020" O.S.)<br>393880 Piston Assy.<br>(.030" O.S.)                       | 29       | 398577   | Rod-Connecting<br>—— <b>Note</b> ——<br>398578 Rod-Conn.<br>(.020" Undersize)   | 36       | 26828    | Spring-Valve<br>(Exhaust)  |
| 26       | 393881   | Ring Set<br>(Standard)<br>299743 Ring Set<br>(Standard, Chrome)<br>393882 Ring Set<br>(.010" O.S.)<br>393883 Ring Set<br>(.020" O.S.)<br>393884 Ring Set<br>(.030" O.S.) | 30       | 223568   | Dipper-Conn. Rod   | 40       | 221596   | Retainer-Valve   |
|          |          |  | 32       | 94670    | Screw-Conn. Rod  | 41       | 292260   | Retainer-Valve   |
|          |          |  | 33       | 390420   | Valve-Exhaust<br>(Includes Ref. 42)  | 42       | 494553   | Keeper-Valve   |
|          |          |  |          |          |  | 45       | 260933   | Tappet-Valve   |
|          |          |  |          |          |  | 46       | 211689   | Gear-Cam   |
|          |          |  |          |          |  | 146      | 94388    | Key-Timing   |
|          |          |  |          |          |  | 219      | 497037   | Gear-Governor  |
|          |          |  |          |          |  | 220      | 221551   | Washer-Thrust  |
|          |          |  |          |          |  | 741      | 263025   | Gear-Timing<br>—— <b>Note</b> ——<br>262479 Gear-Timing<br>(Used Before Code<br>Date 95022000). |

★ Included in Gasket Set-Part No. 497070.  
● Included in Carburetor Kit-See Ref. No. 121.

◆ Included in Carburetor Gasket Set-Part No. 497069.  
⊘ Included in Valve Overhaul Gasket Set-Part No. 498534.

# 176400 to 176499



| REF. NO. | PART NO. | DESCRIPTION                       | REF. NO. | PART NO. | DESCRIPTION  | REF. NO. | PART NO. | DESCRIPTION                                    |
|----------|----------|-----------------------------------|----------|----------|--|----------|----------|--|
| 12       | ★271701  | Gasket-Crankcase<br>(.015" Thick) | 18       | 496981   | Cover-Crankcase<br>Used on Type No(s).<br>0035, 0101, 0115,<br>0116. | 19       | 295964   | Bushing  |
|          | ★27876   | Gasket-Crankcase<br>(.005" Thick) |          |          | <b>Note</b>  | 20       | ★391086  | Seal-Oil                                       |
|          | ★27877   | Gasket-Crankcase<br>(.009" Thick) |          | 496983   | Cover-Crankcase<br>Used on Type No(s).<br>0049, 0050, 0103.          | 21       | 66768    | Cap-Oil Fill                                   |
|          |          |                                   |          | 496979   | Cover-Crankcase<br>Used on Type No(s).<br>0113, 0114.                | 22       | 93585    | Screw-Hex                                      |
|          |          |                                   |          |          |  | 22A      | 94931    | Stud-Hex. Drive<br>(Used in No. 1<br>Position) |
|          |          |                                   |          |          |  | 84       | 91488    | Plug-Oil                                       |
|          |          |                                   |          |          |  | 186      | 67218    | Connector-Hose                                 |
|          |          |                                   |          |          |  | 186A     | 230318   | Connector-Hose                                 |

★ Included in Gasket Set-Part No. 497070.  
● Included in Carburetor Kit-See Ref. No. 121.

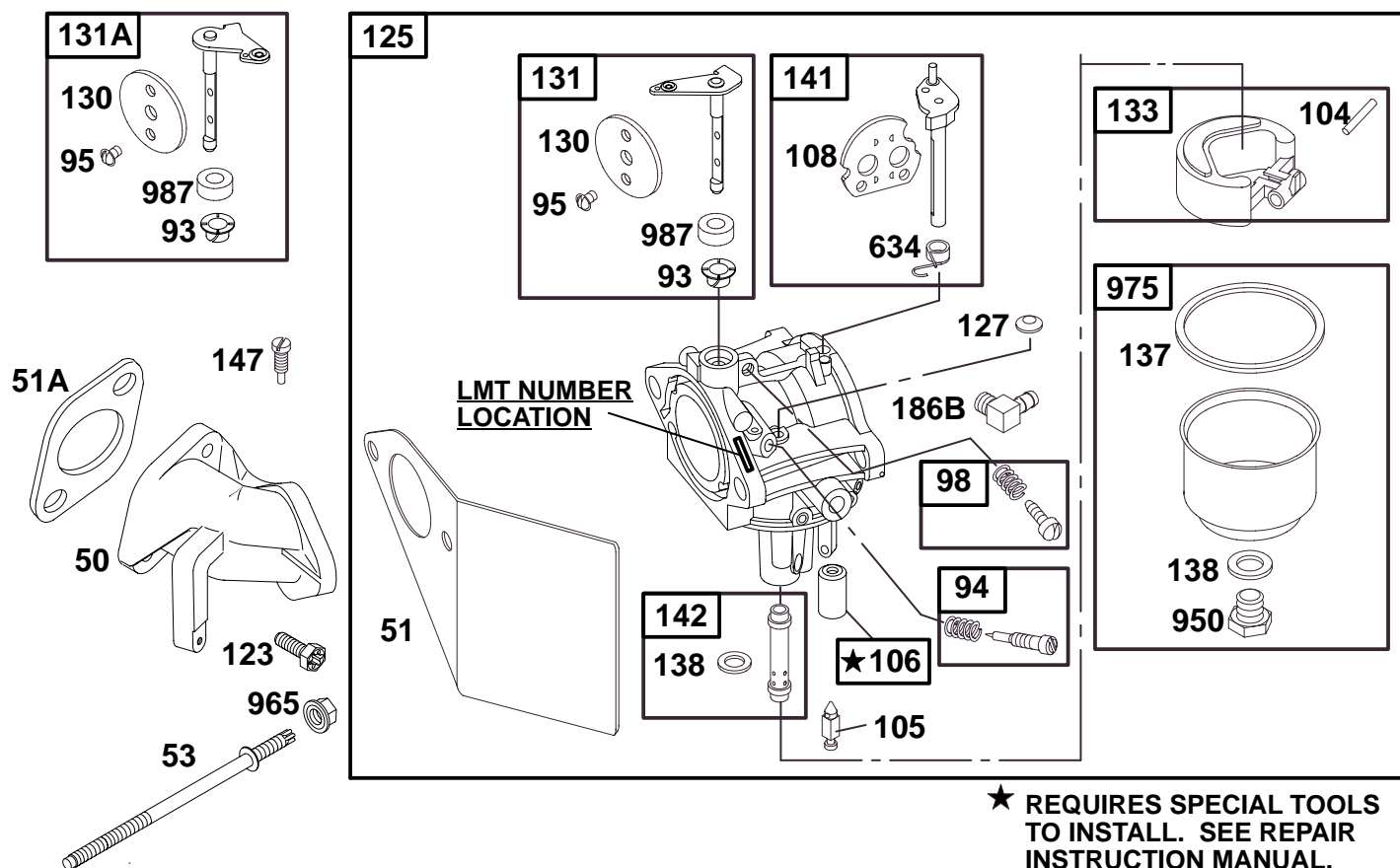
◆ Included in Carburetor Gasket Set-Part No. 497069.  
⊘ Included in Valve Overhaul Gasket Set-Part No. 498534.

0419-4

Assemblies include all parts shown in frames.

97

# 176400 to 176499

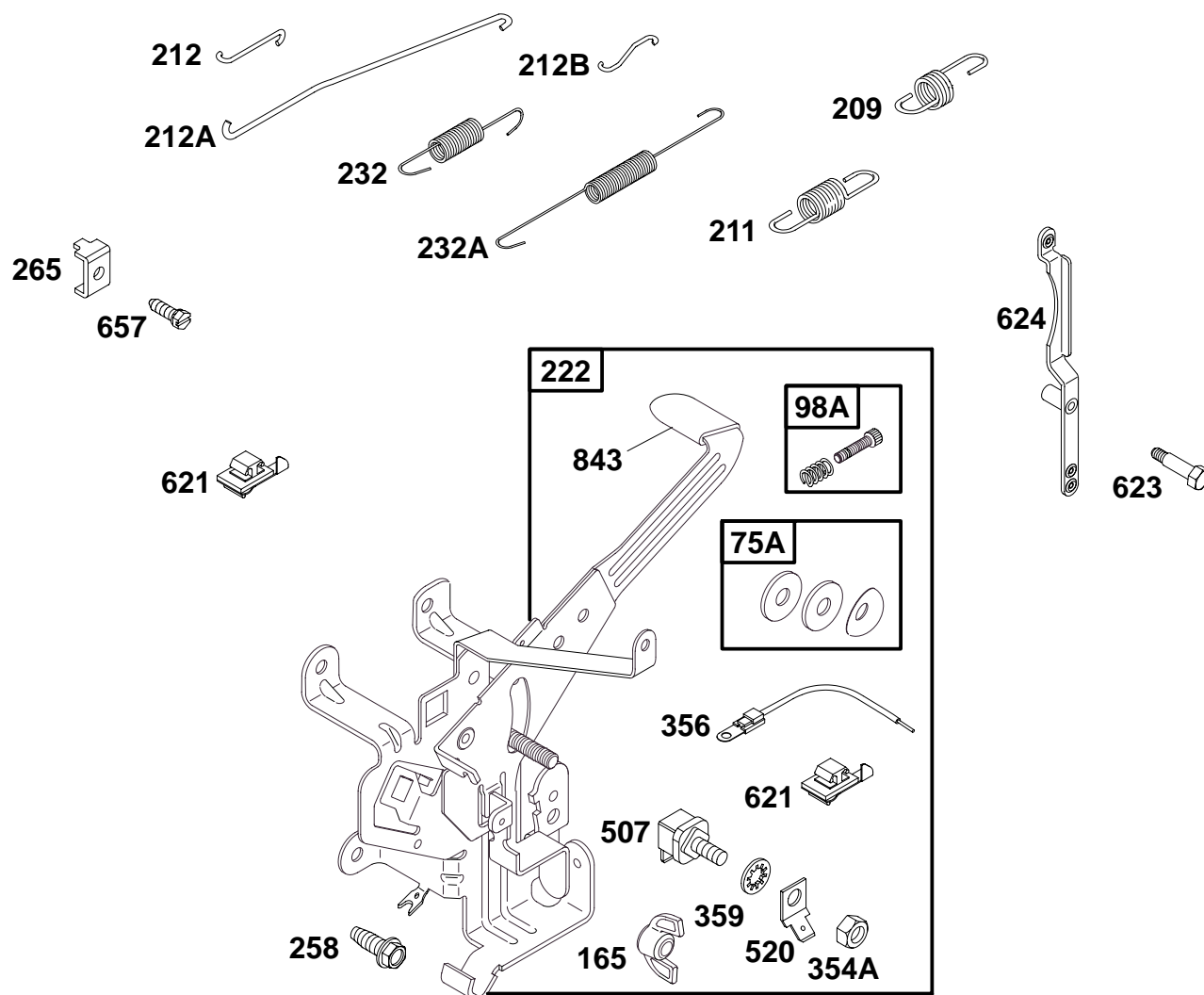


| REF. NO. | PART NO.  | DESCRIPTION            | REF. NO. | PART NO. | DESCRIPTION             | REF. NO. | PART NO. | DESCRIPTION             |
|----------|-----------|------------------------|----------|----------|-------------------------|----------|----------|-------------------------|
| 50       | 214170    | Manifold-Intake        | 125      | 497581   | Carburetor              | 142      | 499094   | Nozzle-Carburetor       |
| 51       | ◆◆★272708 | Gasket-Intake          |          |          | ————— <b>Note</b> ————— |          |          | (Standard               |
| 51A      | ∅★272707  | Gasket-Intake          |          | 497038   | Carburetor              |          |          | LMT 171)                |
| 53       | 94778     | Stud-Carb. Mounting    |          |          | (Used Before Code       |          |          | ————— <b>Note</b> ————— |
| 93       | ◆281346   | Bushing-Throttle Shaft |          |          | Date 94090100).         |          | ◆497196  | Nozzle-Carb.            |
| 94       | 494383    | Valve-Idle Adjustment  | 127      | ◆        | Plug-Welch              |          |          | (Standard               |
| 95       | ◆94098    | Screw-Choke/Throttle   |          |          | (Sold in Kit Only)      |          |          | LMT 69, 103)            |
| 98       | 495800    | Screw-Idle Speed       | 130      | 224668   | Valve-Throttle          |          | 499111   | Nozzle-Carb.            |
| 104      | ◆231789   | Pin-Float Hinge        | 131      | 497579   | Shaft-Throttle          |          |          | (High Altitude          |
| 105      | ◆231935   | Valve-Needle           | 131A     | 497042   | Shaft-Throttle          |          |          | LMT 171)                |
| 106      | ◆231856   | Seat-Inlet             |          |          | (LMT 69, 103)           |          | 497040   | Nozzle-Carb.            |
| 108      | 224540    | Valve-Choke            | 133      | 494381   | Float-Carburetor        |          |          | (High Altitude          |
| 123      | 94616     | Screw-Torx®Hex.        | 137      | ◆◆281165 | Gasket-Float Bowl       |          |          | LMT 69, 103)            |
|          |           |                        | 138      | ◆◆281164 | Washer                  | 147      | ◆497472  | Jet-Pilot               |
|          |           |                        | 141      | 497043   | Shaft-Choke             |          |          | (Used Before Code       |
|          |           |                        |          |          |                         |          |          | Date 96072600).         |
|          |           |                        |          |          |                         | 186B     | 493496   | Connector-Hose          |
|          |           |                        |          |          |                         | 634      | ◆494455  | Seal-Spring Assembly    |
|          |           |                        |          |          |                         | 950      | 94642    | Screw- Bowl Mounting    |
|          |           |                        |          |          |                         | 965      | 94010    | Nut-Hex.                |
|          |           |                        |          |          |                         | 975      | 494378   | Bowl-Float              |
|          |           |                        |          |          |                         | 987      | ◆281166  | Seal-Throttle Shaft     |

★ Included in Gasket Set-Part No. 497070.  
◆ Included in Carburetor Kit-See Ref. No. 121.

◆ Included in Carburetor Gasket Set-Part No. 497069.  
Ø Included in Valve Overhaul Gasket Set-Part No. 498534.

# 176400 to 176499

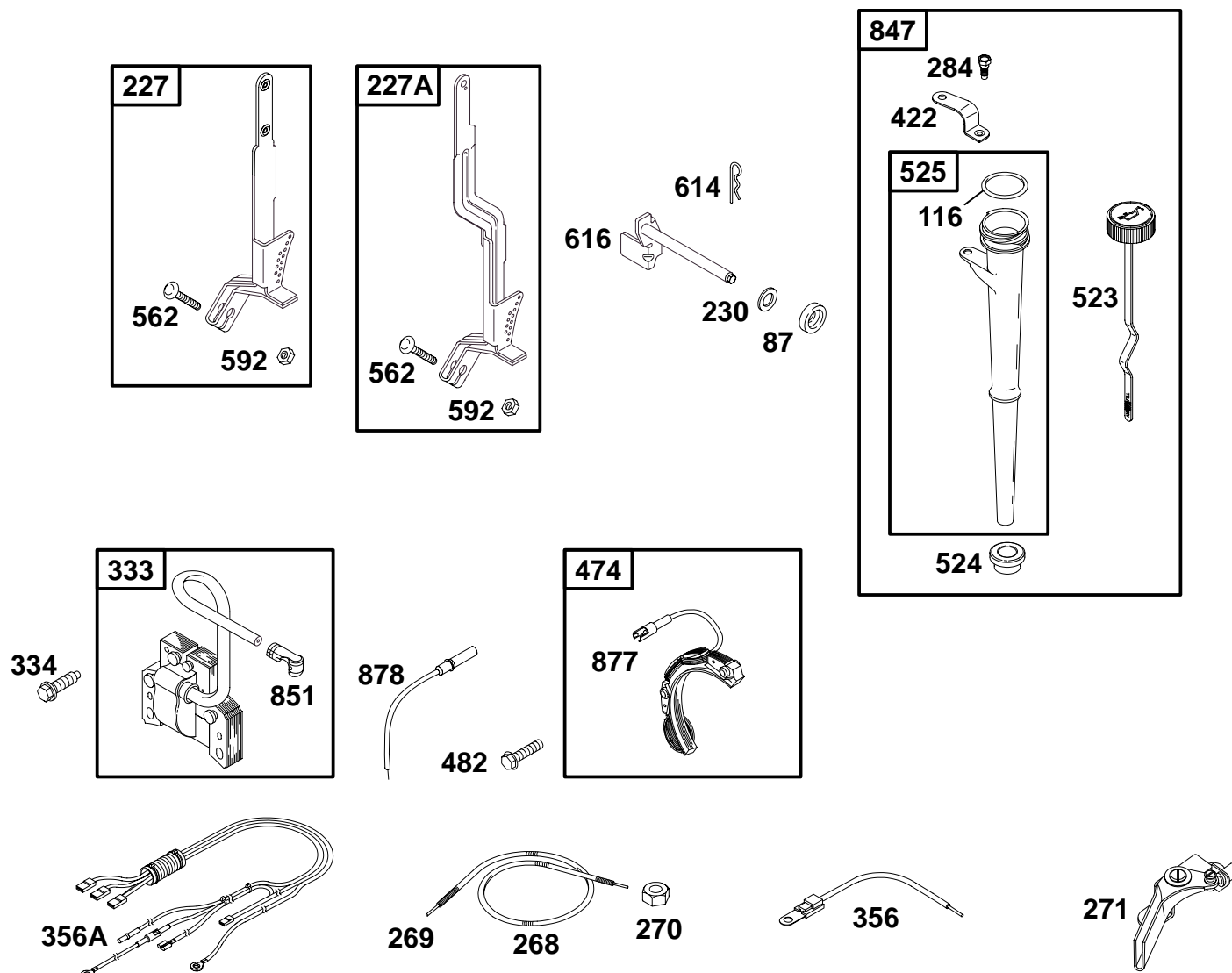


| REF. NO. | PART NO. | DESCRIPTION  | REF. NO. | PART NO. | DESCRIPTION           | REF. NO. | PART NO. | DESCRIPTION    |
|----------|----------|--|----------|----------|-----------------------|----------|----------|----------------|
| 75A      | 495659   | Washer Set   | 211      | 263182   | Spring-Governed Idler | 265      | 221535   | Clamp-Casing   |
| 98A      | 493280   | Screw-Idle Speed   | 212      | 263049   | Link-Throttle         | 356      | 496868   | Wire-Stop      |
| 165      | 94692    | Nut-Wing   | 212A     | 262970   | Link-Throttle         | 359      | 92791    | Washer-Lock    |
| 209      | 263212   | Spring-Governor<br>(Used After Code Date 97042700).                                  | 212B     | 263051   | Link-Throttle         | 354A     | 90576    | Nut-Hex.       |
|          |          | <b>Note</b>  | 222      | 499103   | Bracket-Control       | 507      | 398525   | Insulator      |
|          |          | 263054 Spring-Gov.<br>(Used After Code Date 94090100 and Before Code Date 97042800). |          |          |                       | 520      | 93722    | Terminal       |
|          |          | 260723 Spring-Gov.<br>(Used Before Code Date 94090200).                              | 232      | 263020   | Spring-Link           | 621      | 396847   | Switch-Stop    |
|          |          |  | 232A     | 262959   | Spring-Link           | 623      | 231520   | Screw-Shoulder |
|          |          |  | 258      | 94620    | Screw-Hex.            | 624      | 497207   | Lever-Linkage  |

★ Included in Gasket Set-Part No. 497070.  
● Included in Carburetor Kit-See Ref. No. 121.

◆ Included in Carburetor Gasket Set-Part No. 497069.  
⊘ Included in Valve Overhaul Gasket Set-Part No. 498534.

# 176400 to 176499



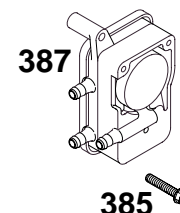
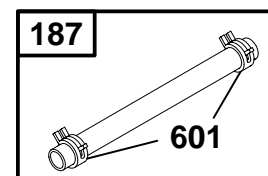
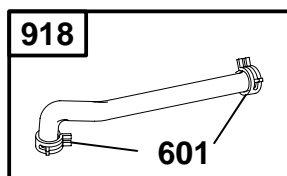
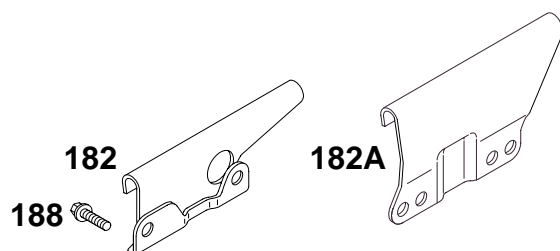
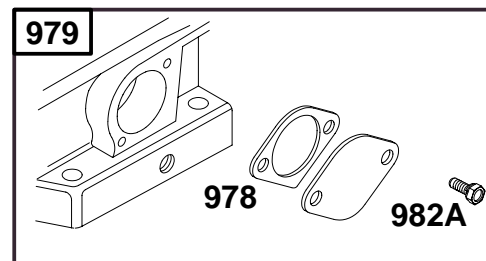
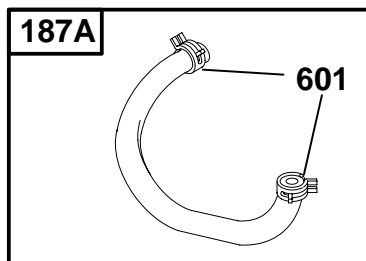
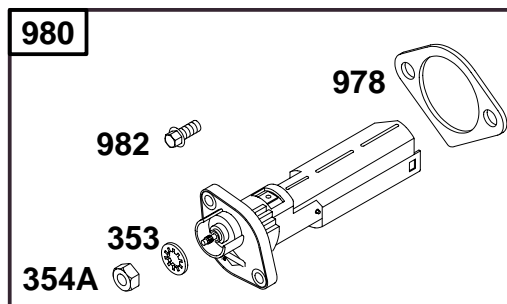
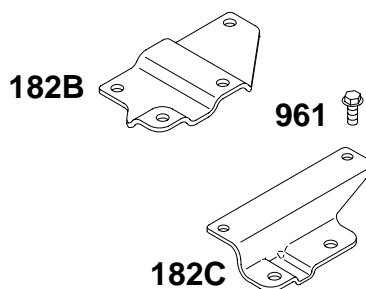
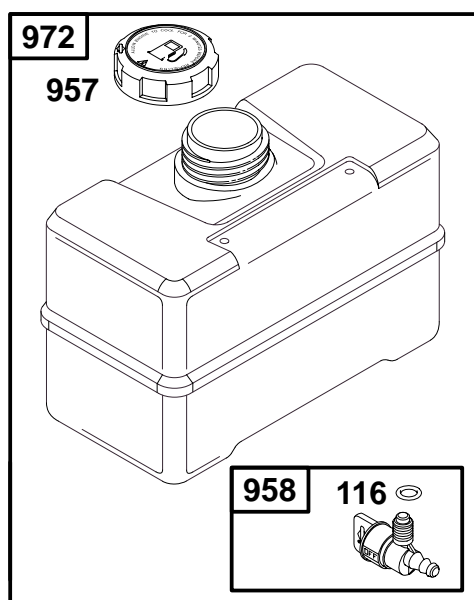
| REF. NO. | PART NO. | DESCRIPTION  | REF. NO.   | PART NO. | DESCRIPTION      | REF. NO. | PART NO. | DESCRIPTION               |
|----------|----------|--|--|----------|------------------|----------|----------|---------------------------|
| 87       | ★491323  | Seal-Gov. Shaft                                      | 284  | 93886    | Screw-Shoulder   | 523      | 495225   | Dipstick                  |
| 116      | ★270920  | Seal-O-Ring  | 333  | 398811   | Armature-Magneto | 524      | ★281370  | Seal-Fill Tube            |
| 227      | 496254   | Lever-Governor                                       | 334  | 94731    | Screw-Hex.       | 525      | 495347   | Tube-Oil Fill             |
| 227A     | 496253   | Lever-Governor                                       | 356  | 496868   | Wire-Stop        | 562      | 92613    | Bolt-Governor Lever       |
| 230      | 94742    | Washer-Flat  | 356A   | 496612   | Wire-Stop        | 592      | 231082   | Nut-Hex.                  |
| 268      | 65616    | Casing-Wire<br>(72" Long Cut to<br>Required Length)  | <b>Note</b>  |          |                  | 614      | 93306    | Pin-Cotter                |
| 269      | 26633    | Wire-Control<br>(78" Long Cut to<br>Required Length) | 496614 Wire-Stop<br>Used on Type No(s).<br>0101, 0103. |          |                  | 616      | 496818   | Crank-Governor            |
| 270      | 63426    | Locknut-Casing                                       | 422  | 223375   | Bracket-Oil Fill | 847      | 399901   | Dipstick/Tube<br>Assembly |
| 271      | 290568   | Lever-Control  | 474  | 391529   | Alternator       | 851      | 493880   | Terminal-Cable            |
|          |          |  | 482  | 93621    | Screw-Hex.       | 877      | 393814   | Wire-Alternator           |
|          |          |  |  |          |                  | 878      | 393422   | Harness-Alternator        |

★ Included in Gasket Set-Part No. 497070.  
● Included in Carburetor Kit-See Ref. No. 121.

◆ Included in Carburetor Gasket Set-Part No. 497069.  
⊗ Included in Valve Overhaul Gasket Set-Part No. 498534.



# 176400 to 176499

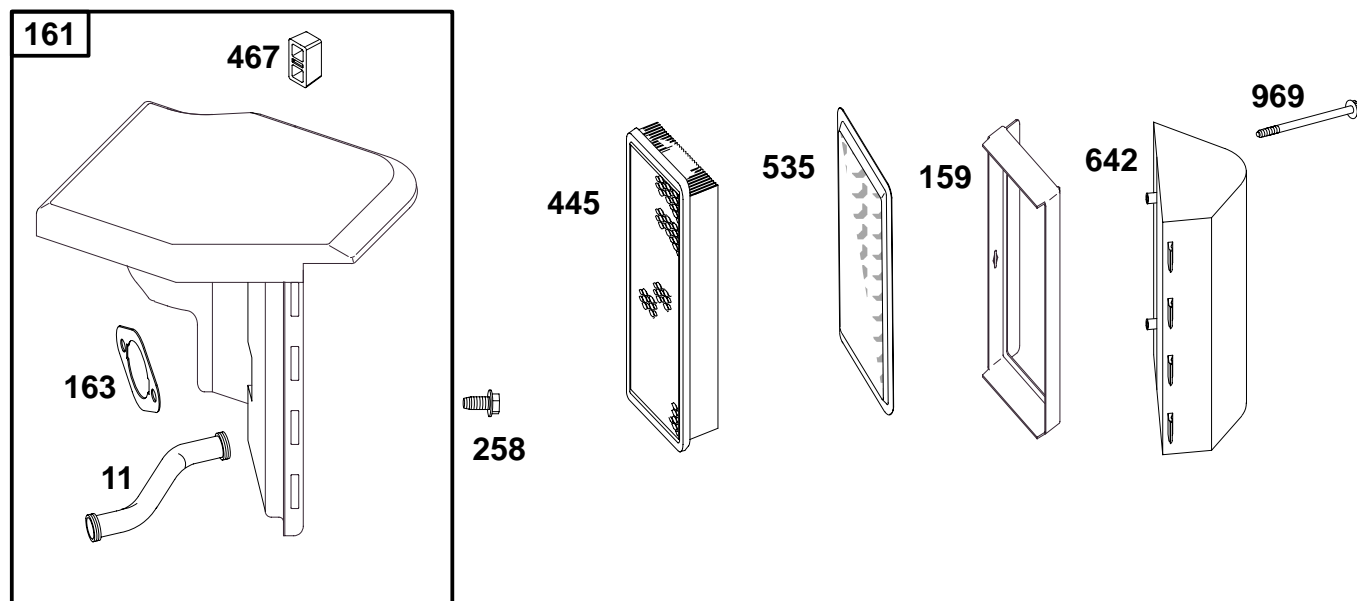


| REF. NO. | PART NO. | DESCRIPTION                           | REF. NO. | PART NO. | DESCRIPTION    | REF. NO. | PART NO. | DESCRIPTION     |
|----------|----------|---------------------------------------|----------|----------|----------------|----------|----------|-----------------|
| 116      | 280203   | Seal-O-Ring                           | 187A     | 497029   | Line-Fuel      | 972      | 493337   | Tank-Fuel       |
| 182      | 224855   | Bracket-Fuel Tank                     | 188      | 94627    | Screw-Hex.     | 978      | ★271736  | Gasket          |
| 182A     | 492990   | Bracket-Fuel Tank                     | 353      | 92791    | Washer-Lock    | 979      | 494807   | Cover-OIL GARD® |
| 182B     | 224854   | Bracket-Fuel Tank                     | 354A     | 90576    | Nut-Hex.       | 980      | 398182   | OIL GARD® Kit   |
| 182C     | 495664   | Bracket-Fuel Tank                     | 385      | 94789    | Screw-Hex.     | 982      | 94657    | Screw-Hex.      |
|          |          | <b>Include(s):</b>                    | 387      | 496257   | Pump-Fuel      | 982A     | 94658    | Screw-Hex.      |
|          |          | 94733 Stud-Hex.                       | 601      | 93053    | Clamp-Hose     |          |          |                 |
|          |          | Drive                                 | 918      | 497457   | Hose-Vacuum    |          |          |                 |
|          |          | 94726 Nut-Hex.                        | 957      | 493988   | Cap-Fuel Tank  |          |          |                 |
| 187      | 296004   | Line-Fuel<br>(Cut to Required Length) | 958      | 399517   | Valve-Shut-Off |          |          |                 |
|          |          |                                       | 961      | 94095    | Screw-Hex.     |          |          |                 |

★ Included in Gasket Set-Part No. 497070.  
● Included in Carburetor Kit-See Ref. No. 121.

◆ Included in Carburetor Gasket Set-Part No. 497069.  
⊘ Included in Valve Overhaul Gasket Set-Part No. 498534.



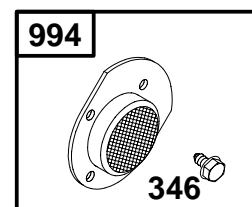
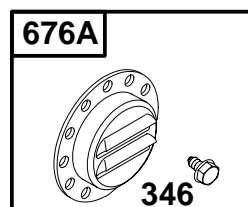
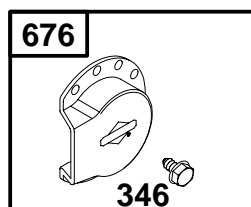
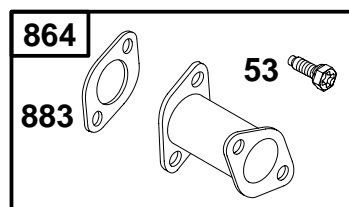
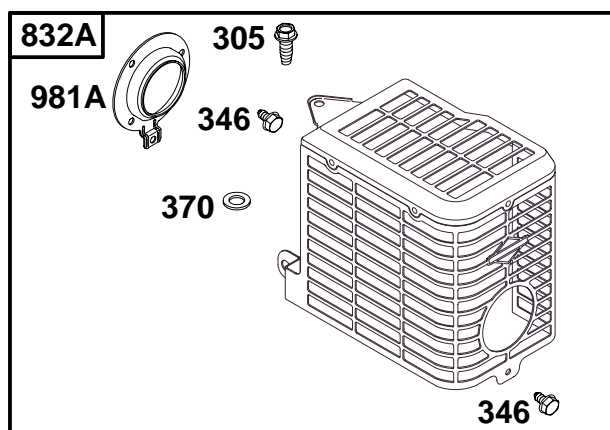
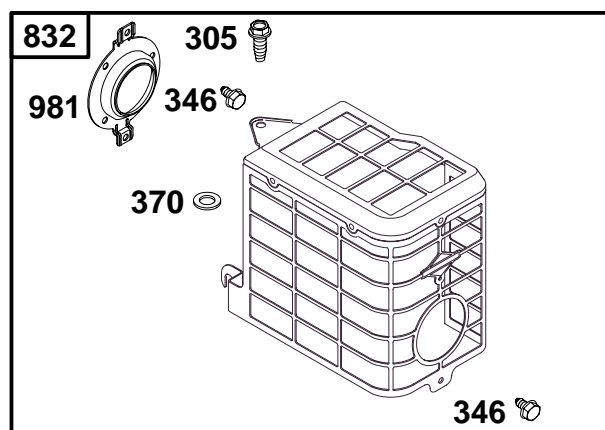
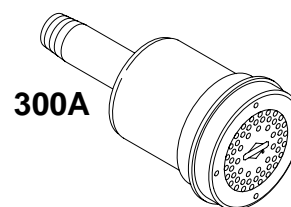
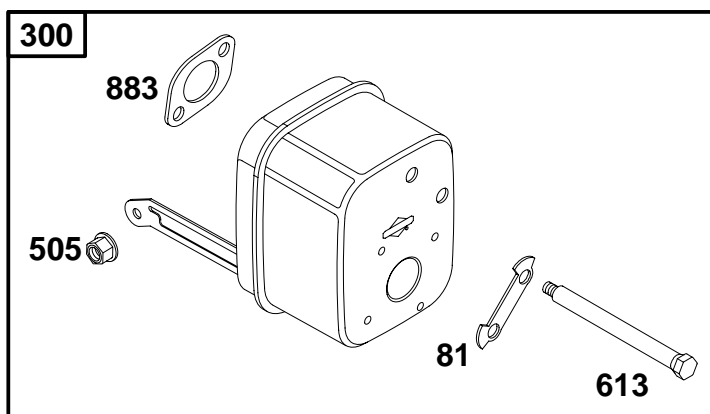


| REF. NO. | PART NO. | DESCRIPTION   | REF. NO. | PART NO. | DESCRIPTION                       | REF. NO. | PART NO. | DESCRIPTION        |
|----------|----------|---|----------|----------|-----------------------------------|----------|----------|--------------------|
| 11       | 280819   | Tube-Breather   | 163      | ★273101  | Gasket-Air Cleaner                | 445      | 496077   | Filter-Air         |
| 159      | 281358   | Support-Air Cleaner                                       |          |          | <b>Note</b>                       | 467      | 280715   | Knob-Control       |
| 161      | 497669   | Base-Air Cleaner  |          |          | ★272706 Gasket-Air Cleaner        | 535      | 492889   | Filter-Air         |
|          |          | <b>Note</b>   |          |          | (Used Before Code Date 95010200). | 642      | 281357   | Cover-Air Cleaner  |
|          |          | 498544 Base-Air Cleaner (Used Before Code Date 95010200). | 258      | 94620    | Screw-Hex.                        | 969      | 94777    | Screw-Slotted Hex. |

★ Included in Gasket Set-Part No. 497070.  
 ● Included in Carburetor Kit-See Ref. No. 121.

◆ Included in Carburetor Gasket Set-Part No. 497069.  
 ◊ Included in Valve Overhaul Gasket Set-Part No. 498534.

# 176400 to 176499

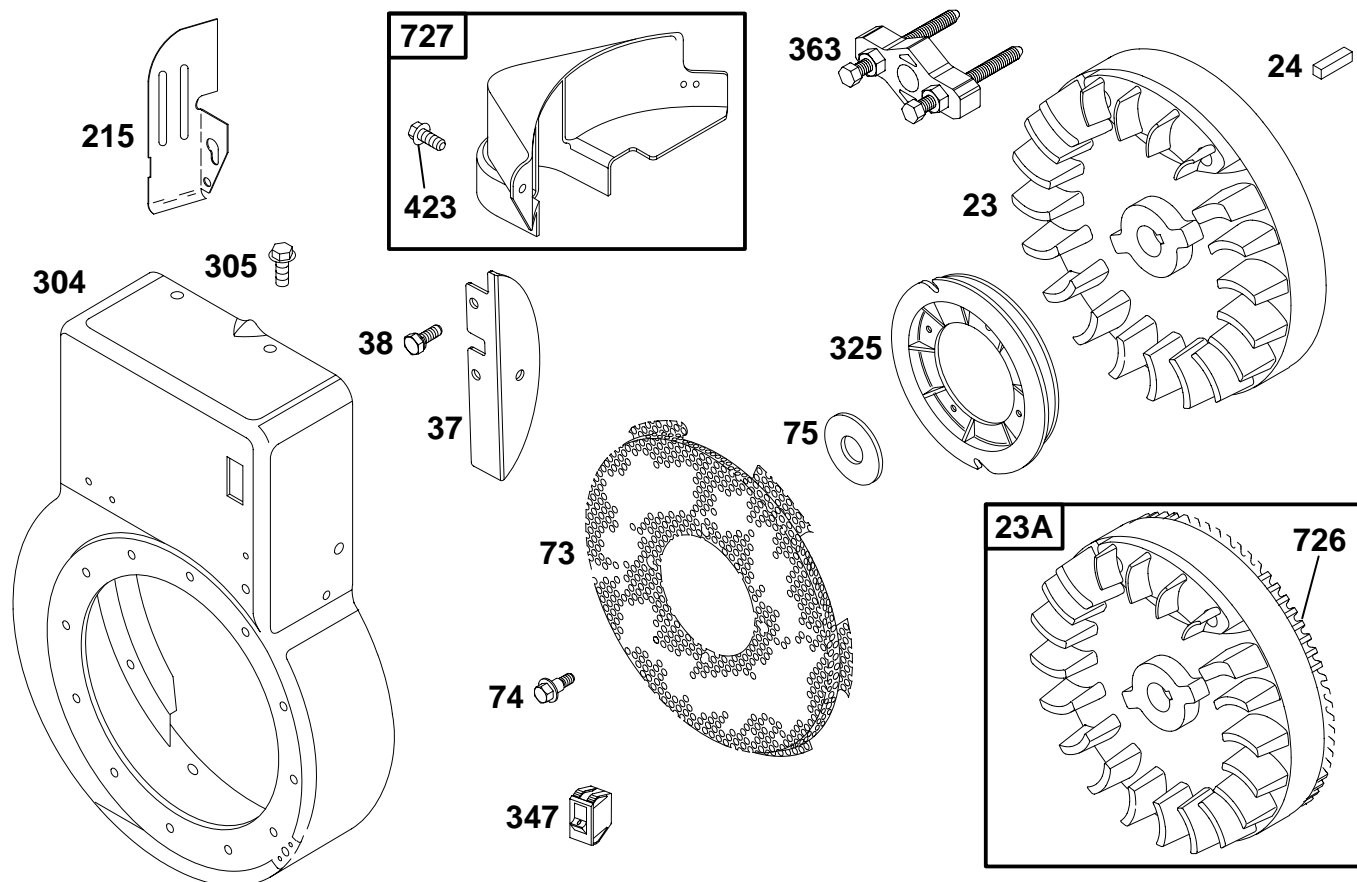


| REF. NO. | PART NO. | DESCRIPTION        | REF. NO. | PART NO. | DESCRIPTION       | REF. NO. | PART NO. | DESCRIPTION     |
|----------|----------|--------------------|----------|----------|-------------------|----------|----------|-----------------|
| 53       | 94706    | Screw-Torx® Hex.   | 370      | 94856    | Washer            | 832A     | 496739   | Guard-Muffler   |
| 81       | 222263   | Lock-Muffler Screw | 505      | 94726    | Nut-Hex.          | 864      | 497140   | Adapter-Muffler |
| 300      | 497141   | Muffler-Exhaust    | 613      | 94054    | Screw-Shoulder    | 883      | 272309   | Gasket-Exhaust  |
| 300A     | 496127   | Muffler-Exhaust    | 676      | 393757   | Deflector-Muffler | 981      | 225214   | Bracket-Muffler |
| 305      | 94786    | Screw-Hex.         | 676A     | 393758   | Deflector-Muffler | 981A     | 225006   | Bracket-Muffler |
| 346      | 93705    | Screw-Hex.         | 832      | 498236   | Guard-Muffler     | 994      | 399541   | Arrester-Spark  |

★ Included in Gasket Set-Part No. 497070.  
● Included in Carburetor Kit-See Ref. No. 121.

◆ Included in Carburetor Gasket Set-Part No. 497069.  
⊘ Included in Valve Overhaul Gasket Set-Part No. 498534.

# 176400 to 176499



| REF. NO. | PART NO. | DESCRIPTION     | REF. NO. | PART NO. | DESCRIPTION         | REF. NO. | PART NO. | DESCRIPTION         |
|----------|----------|-----------------|----------|----------|---------------------|----------|----------|---------------------|
| 23       | 298260   | Flywheel        | 215      | 221760   | Guide-Air           | 325      | 280457   | Pulley-Starter      |
| 23A      | 391983   | Flywheel        | 304      | 497142   | Housing-Blower      | 347      | 495098   | Switch-Rocker       |
| 24       | 222698   | Key-Flywheel    |          |          | <b>Note</b>         | 363      | 19203    | Flywheel Puller     |
| 37       | 222475   | Guard-Flywheel  |          | 497143   | Housing-Blower      | 423      | 94625    | Screw-Shoulder      |
| 38       | 94811    | Screw-Hex.      |          |          | Used on Type No(s). | 726      | 392134   | Gear-Ring           |
| 73       | 224874   | Screen-Rotating |          |          | 0114.               | 727      | 395405   | Cover-Starter Drive |
| 74       | 94806    | Screw-Shoulder  | 305      | 94786    | Screw-Hex.          |          |          |                     |
| 75       | 224061   | Washer-Flywheel |          |          |                     |          |          |                     |

★ Included in Gasket Set-Part No. 497070.  
 ● Included in Carburetor Kit-See Ref. No. 121.

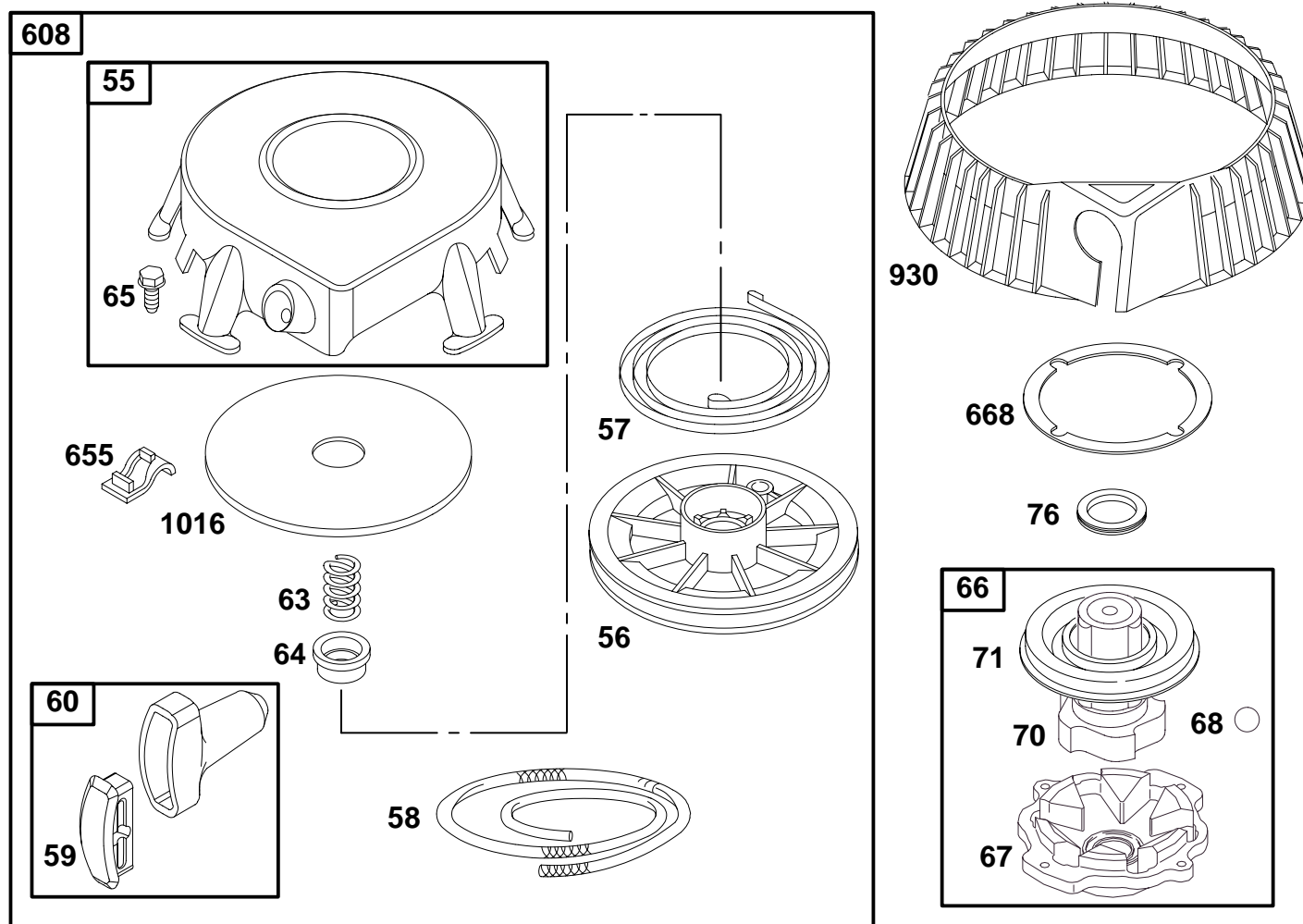
◆ Included in Carburetor Gasket Set-Part No. 497069.  
 ◊ Included in Valve Overhaul Gasket Set-Part No. 498534.

0419-11

Assemblies include all parts shown in frames.

97

# 176400 to 176499



| REF. NO. | PART NO. | DESCRIPTION             | REF. NO. | PART NO. | DESCRIPTION    | REF. NO. | PART NO. | DESCRIPTION    |
|----------|----------|-------------------------|----------|----------|----------------|----------|----------|----------------|
| 55       | 393576   | Housing-Rewind Starter  | 63       | 260414   | Spring-Ratchet | 71       | 394506   | Cover-Ratchet  |
| 56       | 295871   | Pulley-Starter          | 64       | 281204   | Adapter-Spring | 76       | 68238    | Seal           |
| 57       | 490179   | Spring-Rewind Starter   | 65       | 94686    | Screw-Hex.     | 608      | 390391   | Starter-Rewind |
| 58       | 66884    | Rope-Starter (63" Long) | 66       | 399671   | Clutch-Starter | 655      | 222598   | Anchor-Spring  |
| 59       | 490653   | Insert-Grip             | 67       | 394897   | Housing-Clutch | 668      | 225124   | Spacer         |
| 60       | 490652   | Grip-Starter Rope       | 68       | 63770    | Ball-Clutch    | 930      | 280685   | Guard-Rewind   |
|          |          |                         | 70       | 298799   | Ratchet-Clutch | 1016     | 490817   | Spacer-Rewind  |

★ Included in Gasket Set-Part No. 497070.  
 ● Included in Carburetor Kit-See Ref. No. 121.

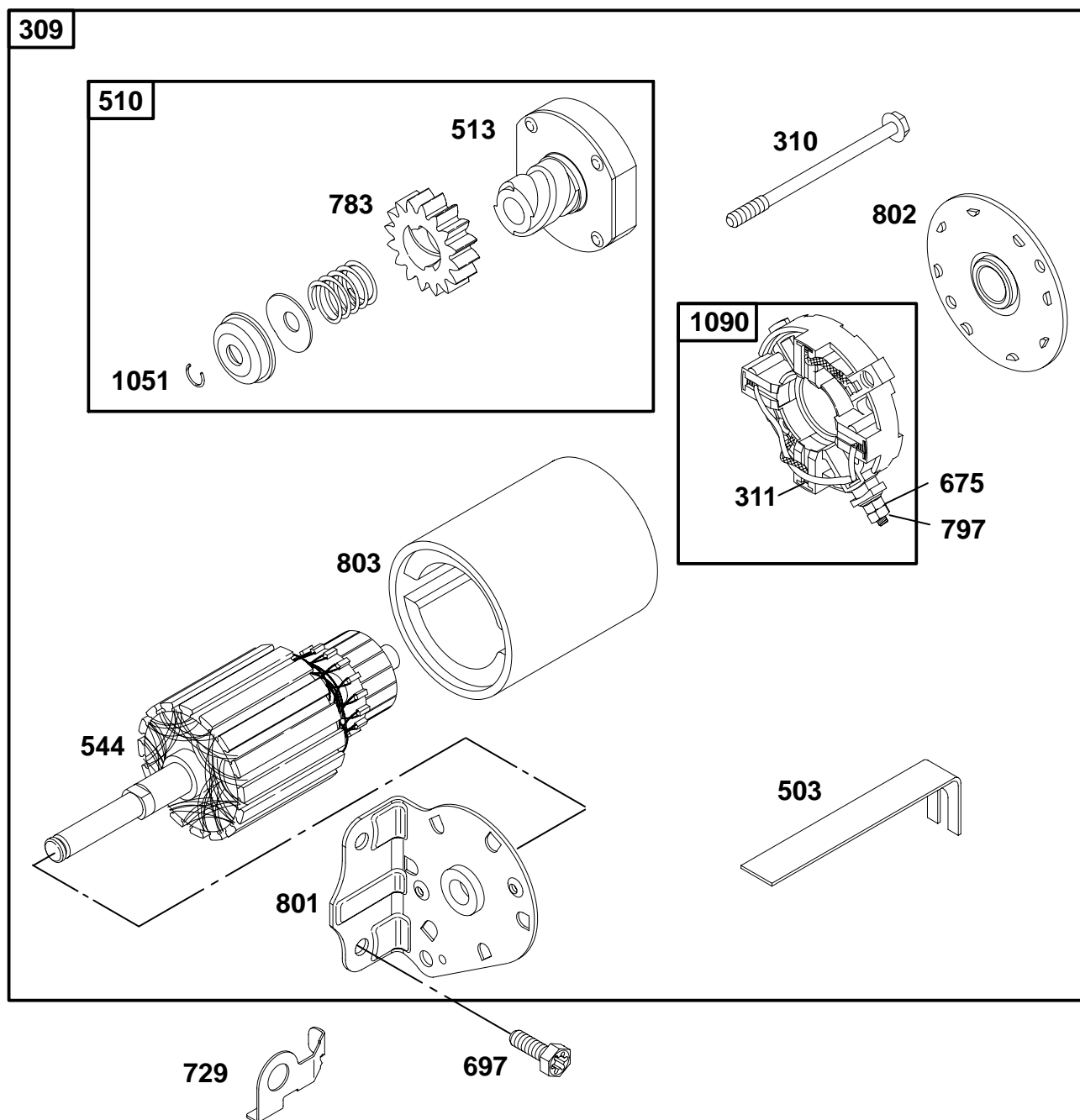
◆ Included in Carburetor Gasket Set-Part No. 497069.  
 ⌘ Included in Valve Overhaul Gasket Set-Part No. 498534.

0419-12

Assemblies include all parts shown in frames.

97

# 176400 to 176499



| REF. NO. | PART NO. | DESCRIPTION                                       | REF. NO. | PART NO. | DESCRIPTION                                | REF. NO. | PART NO. | DESCRIPTION                               |
|----------|----------|---|----------|----------|--|----------|----------|---|
| 309      | 693054   | Motor-Starter<br>(3 5/8" Housing Lgth.)           | 544      | 497603   | Armature-Starter<br>(3 5/8" Housing Lgth.) | 797      | 92278    | Nut<br>(Starter Terminal)                 |
| 310      | 94003    | Bolt<br>(Starter Motor)<br>(3 5/8" Housing Lgth.) | 675      | 225137   | Washer<br>(Starter Motor)                  | 801      | 394856   | Cap-Drive                                 |
| 311      | 497608   | Brush Set   | 697      | 94773    | Screw<br>(Starter Motor<br>Mounting)       | 802      | 497607   | Cap-End                                   |
| 503      | 806000   | Strap-Starter                                     | 729      | 225170   | Clip-Wire                                  | 803      | 497604   | Housing-Starter<br>(3 5/8" Housing Lgth.) |
| 510      | 497606   | Drive-Starter                                     | 783      | 693059   | Gear-Starter                               | 1051     | 263080   | Ring-Retainer                             |
| 513      | 398003   | Clutch-Drive                                      |          |          |  | 1090     | 497605   | Retainer-Brush                            |

★ Included in Gasket Set-Part No. 497070.  
● Included in Carburetor Kit-See Ref. No. 121.

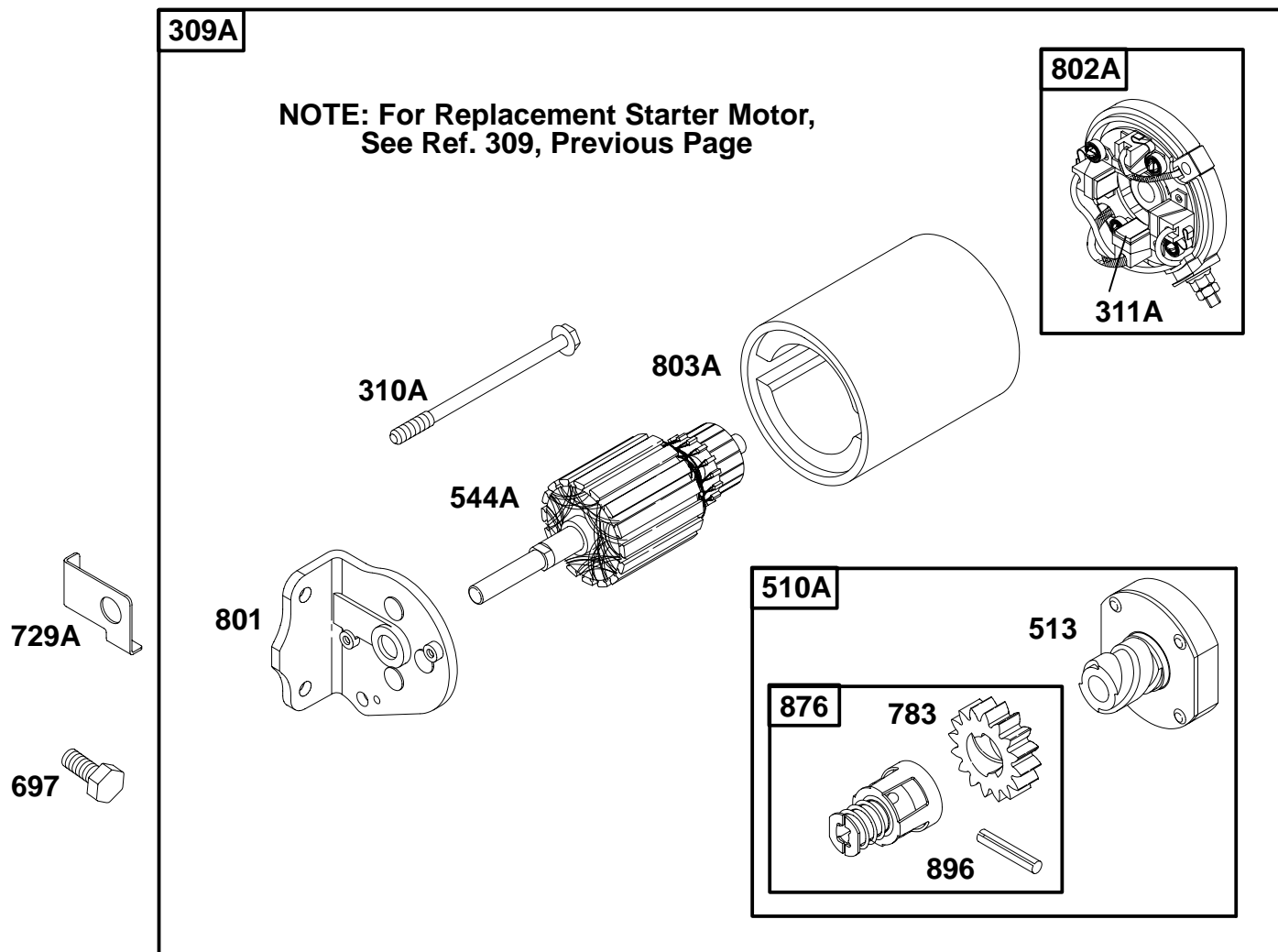
◆ Included in Carburetor Gasket Set-Part No. 497069.  
⊘ Included in Valve Overhaul Gasket Set-Part No. 498534.

0419-13

Assemblies include all parts shown in frames.

97

# 176400 to 176499



| REF. NO.    | PART NO.      | DESCRIPTION   | REF. NO.    | PART NO.      | DESCRIPTION                                     | REF. NO.    | PART NO.      | DESCRIPTION                                    |
|-------------|---------------|---|-------------|---------------|---|-------------|---------------|--|
| <b>309A</b> |               | <b>For Replacement Starter Motor, See Ref 309, Previous Page.</b> |             |               |   | <b>783</b>  | <b>693059</b> | Gear–Starter                                   |
|             |               |   | <b>503</b>  | <b>806000</b> | Strap–Starter                                   | <b>801</b>  | <b>394856</b> | Cap–Drive                                      |
| <b>310A</b> | <b>94003</b>  | Bolt.<br>(Starter Motor)<br>(For 3 5/8" Housing Length )          | <b>510A</b> | <b>495878</b> | Drive–Starter                                   | <b>802A</b> | <b>395537</b> | Cap–End<br>(For 3 5/8" Housing Length)         |
|             |               |   | <b>513</b>  | <b>398003</b> | Clutch–Drive                                    | <b>803A</b> | <b>398159</b> | Housing–Starter<br>(For 3 5/8" Housing Length) |
| <b>311A</b> | <b>395538</b> | Brush Set<br>(For 3 5/8" Housing                                  | <b>544A</b> | <b>390837</b> | Armature–Starter<br>(For 3 5/8" Housing Length) | <b>876</b>  | <b>495877</b> | Kit–Gear                                       |
|             |               |   | <b>697</b>  | <b>94773</b>  | Screw<br>(Starter Motor Mounting)               | <b>896</b>  | <b>94288</b>  | Pin–Roll                                       |

- ★ Included in Gasket Set–Part No. 497070.
- Included in Carburetor Kit–See Ref. No. 121.

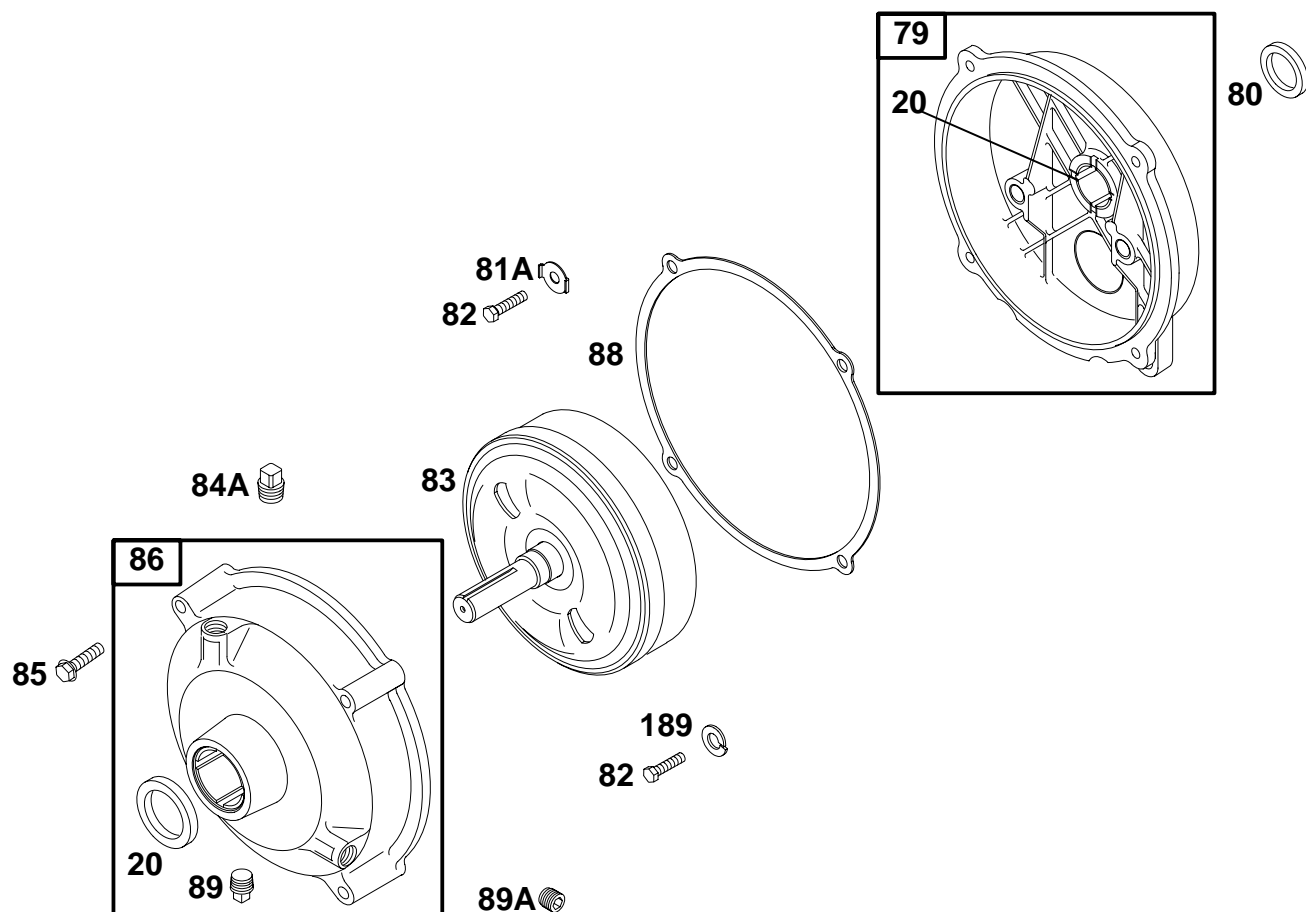
- ◆ Included in Carburetor Gasket Set–Part No. 497069.
- ⊘ Included in Valve Overhaul Gasket Set–Part No. 498534.

0419–14

Assemblies include all parts shown in frames.

97

# 176400 to 176499



| REF. NO. | PART NO. | DESCRIPTION         | REF. NO. | PART NO. | DESCRIPTION           | REF. NO. | PART NO. | DESCRIPTION    |
|----------|----------|---------------------|----------|----------|-----------------------|----------|----------|----------------|
| 20       | ★391086  | Seal-Oil            | 83       | 495985   | Shaft-Auxiliary Drive | 88       | 27328    | Gasket-Cover   |
| 79       | 296179   | Case-Reduction Gear | 84A      | 94918    | Plug-Breather         | 89       | 91488    | Plug-Oil Drain |
| 80       | 27884    | Gasket-Gear Case    | 85       | 91386    | Screw-Hex.            | 89A      | 94886    | Plug-Oil Drain |
| 81A      | 220234   | Lock-Screw Head     | 86       | 296053   | Cover Assembly-Gear   | 189      | 90366    | Washer-Lock    |
| 82       | 92502    | Screw-Hex.          |          |          |                       |          |          |                |

★ Included in Gasket Set-Part No. 497070.  
 ● Included in Carburetor Kit-See Ref. No. 121.

◆ Included in Carburetor Gasket Set-Part No. 497069.  
 ◇ Included in Valve Overhaul Gasket Set-Part No. 498534.

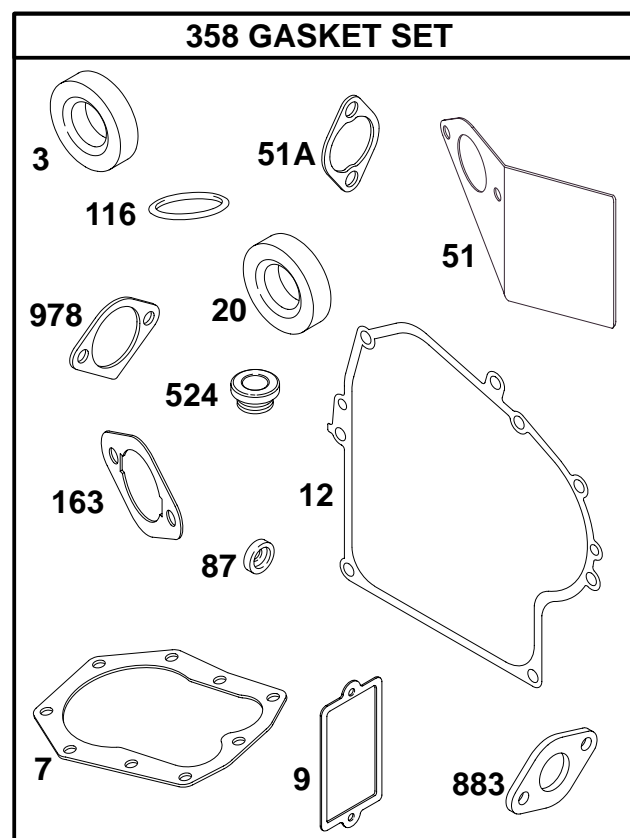
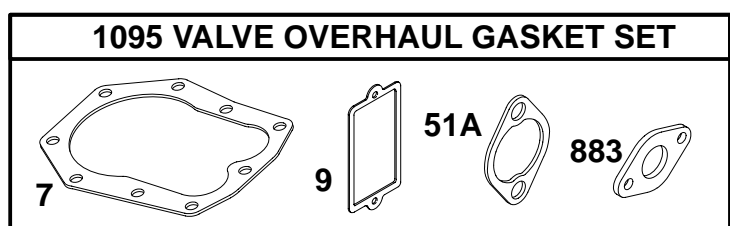
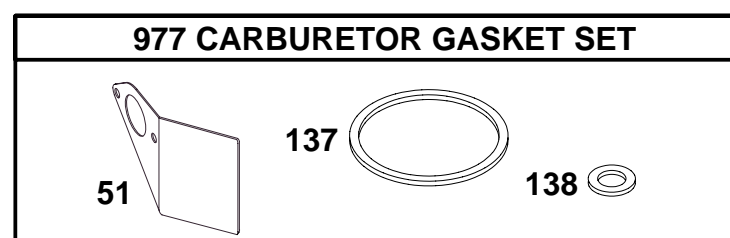
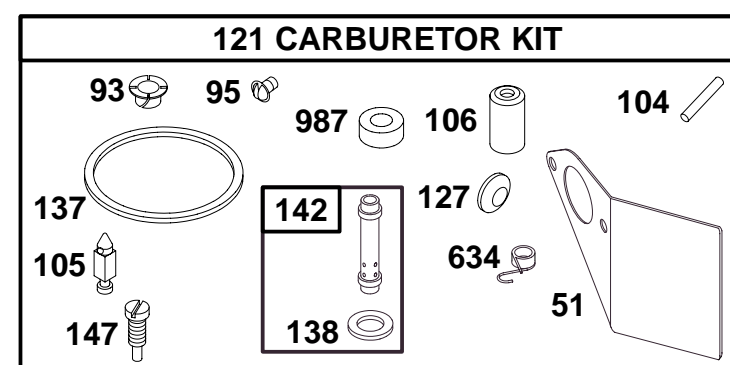
0419-15

Assemblies include all parts shown in frames.

97



# 176400 to 176499



| REF. NO. | PART NO. | DESCRIPTION                           | REF. NO. | PART NO. | DESCRIPTION   | REF. NO. | PART NO. | DESCRIPTION                       |
|----------|----------|---------------------------------------|----------|----------|---|----------|----------|-----------------------------------|
| 3        | ★391086  | Seal—Oil                              | 105      | ●231935  | Valve—Needle  | 163      | ★273101  | Gasket—Air Cleaner (LMT 69, 103)  |
| 7        | Ø★272163 | Gasket—Cylinder Head                  | 106      | ●231856  | Seat—Inlet  |          |          | <b>Note</b>                       |
| 9        | Ø★27803  | Gasket—Breather                       | 116      | ★270920  | Seal—O-Ring   |          |          | ★272706 Gasket—Air Cleaner        |
| 12       | ★271701  | Gasket—Crankcase (.015" Thick)        | 121      | 497578   | Carburetor Kit  |          |          | (Used Before Code Date 95010200). |
|          |          | <b>Note</b>                           |          |          | <b>Note</b>   |          |          |                                   |
|          |          | ★27876 Gasket—Crankcase (.005" Thick) |          |          | 497041 Carburetor Kit (Used Before Code Date 94090100). | 358      | 497070   | Gasket Set                        |
|          |          | ★27877 Gasket—Crankcase (.009" Thick) | 127      | ●        | Plug—Welch (Sold in Kit Only)                           | 524      | ★281370  | Seal—Fill Tube                    |
| 20       | ★391086  | Seal—Oil                              | 137      | ●★281165 | Gasket—Float Bowl                                       | 634      | ●494455  | Seal—Spring Assembly              |
| 51       | ●★272708 | Gasket—Intake                         | 138      | ●★281164 | Washer  | 883      | Ø★272309 | Gasket—Exhaust                    |
| 51A      | Ø★272707 | Gasket—Intake                         | 142      | ●497196  | Nozzle—Carburetor (Standard LMT 69, 103)                | 977      | 497069   | Gasket Set—Carburetor             |
| 87       | ★491323  | Seal—Gov. Shaft                       | 147      | ●497472  | Jet—Pilot   | 978      | ★271736  | Gasket (Oil Switch)               |
| 93       | ●281346  | Bushing—Throttle Shaft                |          |          |   | 987      | ●281166  | Seal—Throttle Shaft               |
| 95       | ●94098   | Screw—Choke/Throttle                  |          |          |   | 1095     | 498534   | Gasket Set—Valve Overhaul         |
| 104      | ●231789  | Pin—Float Hinge                       |          |          |   |          |          |                                   |

★ Included in Gasket Set—Part No. 497070.

● Included in Carburetor Kit—See Ref. No. 121.

◆ Included in Carburetor Gasket Set—Part No. 497069.

Ø Included in Valve Overhaul Gasket Set—Part No. 498534.