

12U800 to 12U899

Illustrated Parts List

Model Series

12U800 to 12U899

TYPE NUMBERS

0633, 0639, 1176,
1733, 1739, 1740,
3119.

TO FIND**THE CORRECT NUMBER OF THE PART YOU NEED:
FOLLOW THE INSTRUCTIONS BELOW**

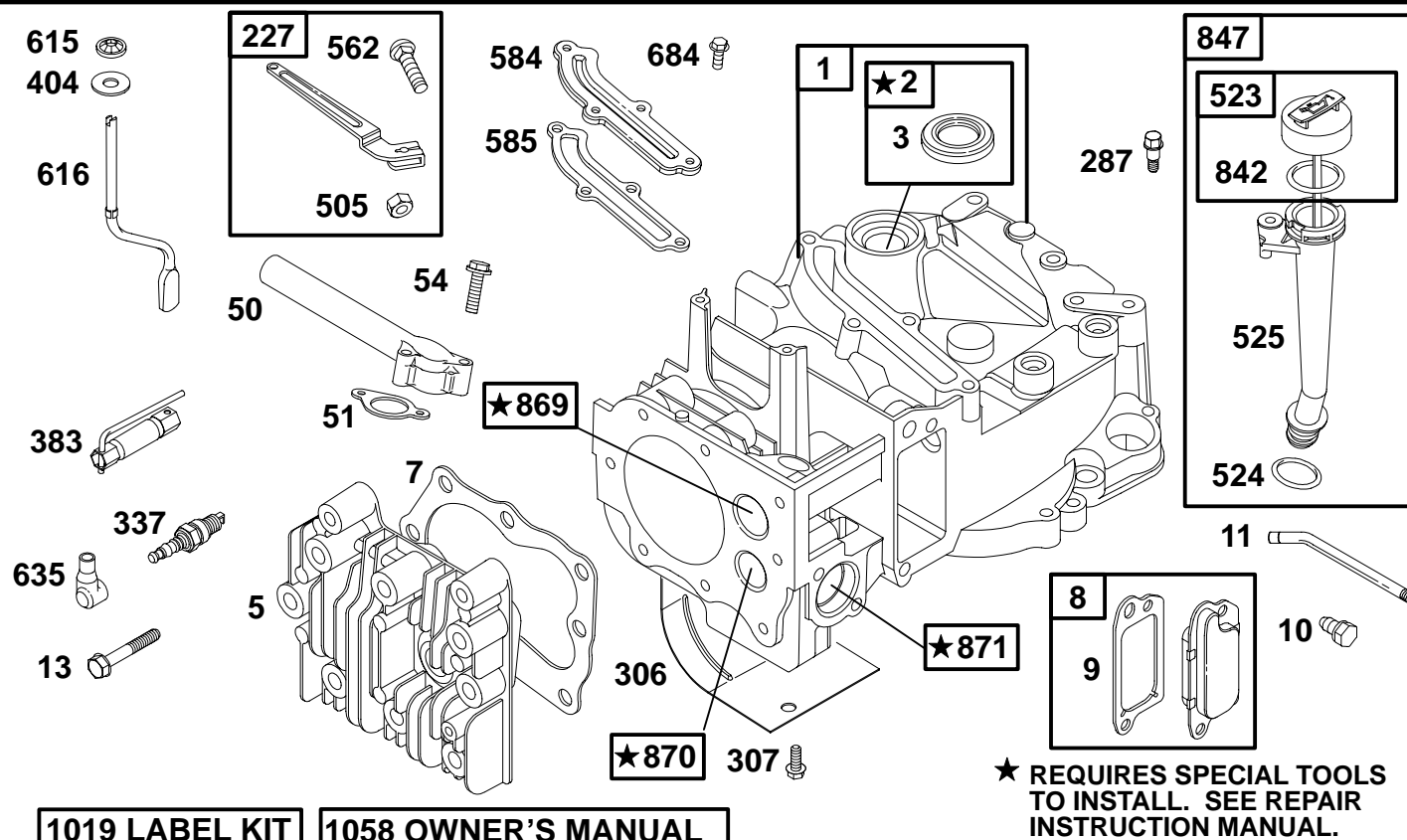
- A. Refer to Engine Model, Type and Code Number that is stamped on the blower housing of engine. Engine type numbers such as 0123 01 are listed only as 0123 in most instances. The two digits (01 or 02, etc.) to the right of the space may be required for more accurate parts identification in some instances. Select the Illustrated Parts List covering the correct Model Series and Type Number.
- B. Refer to the Illustrations and compare the original part with Illustration. The number next to the illustration is the Reference Number. Assemblies include all parts shown in frames. All parts shown in assembly frames having individual reference numbers can be purchased separately.
- C. After the Reference Number has been identified, refer to the Numerical text, where Reference and Primary Part Number are listed. **THE PRIMARY PART IS USED ON ALL TYPE NUMBERS EXCEPT THOSE TYPE NUMBERS UNDER "NOTE."**
- D. If a "Note" appears below the Primary Part Number, it means that this part differs from the Primary Part for certain types. If your Type number is listed under "Note," order the part referred to at the "Note."
- E. If your Engine Type Number does not appear after any part number listed under "Note," use the Primary Part Number.
- F. For Engine Type Numbers not covered by this book, check other Parts Lists having the same engine model or contact your source of supply.

PRINTED IN U.S.A.



COPYRIGHT by BRIGGS & STRATTON CORPORATION
All rights reserved. No part of this material may be reproduced or transmitted, in any form or by any means, electronic or mechanical, including photocopying, recording or by any information storage and retrieval system, without permission in writing from Briggs & Stratton Corporation.

12U800 to 12U899



REF. NO.	PART NO.	DESCRIPTION	REF. NO.	PART NO.	DESCRIPTION	REF. NO.	PART NO.	DESCRIPTION
1	493260	Cylinder Assembly	287	94511	Screw (Dipstick Tube)	635	66538	Sparkplug Boot
2	399269	Bushing/Seal Kit (Magneto Side)	306	690450	Cylinder Shield	684	690345	Screw (Breather Passage Cover)
3	★299819	Oil Seal (Magneto Side)	307	690345	Screw (Cylinder Shield)	842	★280393	Dipstick/Tube Seal
5	691160	Cylinder Head (Used After Code Date 98062100).	337	802592	Spark Plug	847	495263	Dipstick/Tube Assembly
Note			383	89838	Spark Plug Wrench	869	691155	Valve Seat (Intake)
	214626	Cylinder Head (Used Before Code Date 98062200).	404	690272	Washer (Governor Control-Crank)	870	690380	Valve Seat (Exhaust)
7	★0272916	Cylinder Head Gasket	505	231082	Nut (Governor Control Lever)	871	262001	Bushing Guide (Exhaust Valve)
8	495786	Breather Assembly	523	495264	Dipstick	Note		
9	★0272481	Breather Gasket	524	★280966	Dipstick/Tube Seal		63709	Bushing Guide (Intake Valve)
10	94650	Screw (Breather Assy)	525	495265	Dipstick Tube	1019	494256	Label Kit
11	231933	Breather Tube	562	691119	Bolt (Governor Control Lever)	1058	273693	Owner's Manual (Emission)
13	94547	Screw (Cylinder Head)	584	692342	Breather Passage Cover	Note		
50	497465	Intake Manifold	585	★272238	Breather Passage Gasket		272262	Owner's Manual (Non-Emission)
51	★272199	Intake Gasket	615	690340	Governor Shaft Retainer			
54	94526	Screw (Intake Manifold)	616	691306	Crank-Governor			
227	690783	Governor Control Lever						

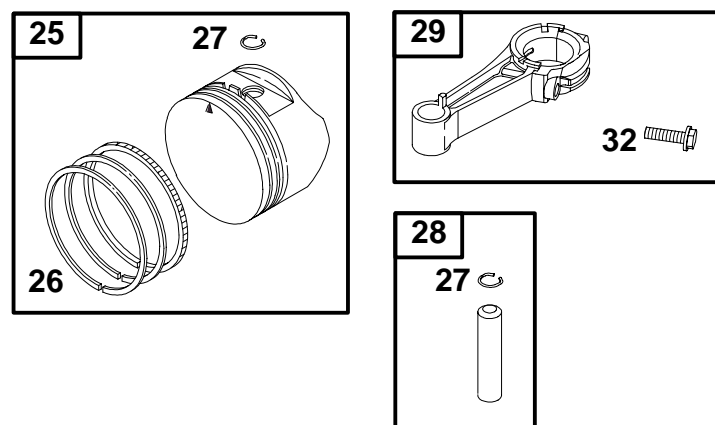
★ Included in Engine Overhaul Gasket Set-Ref. No.358.

● Included in Carburetor Overhaul Kit-Ref. No. 121.

◆ Included in Carburetor Gasket Set-Ref. No. 977.

◇ Included in Valve Overhaul Gasket Set-Ref. No. 1095.

12U800 to 12U899

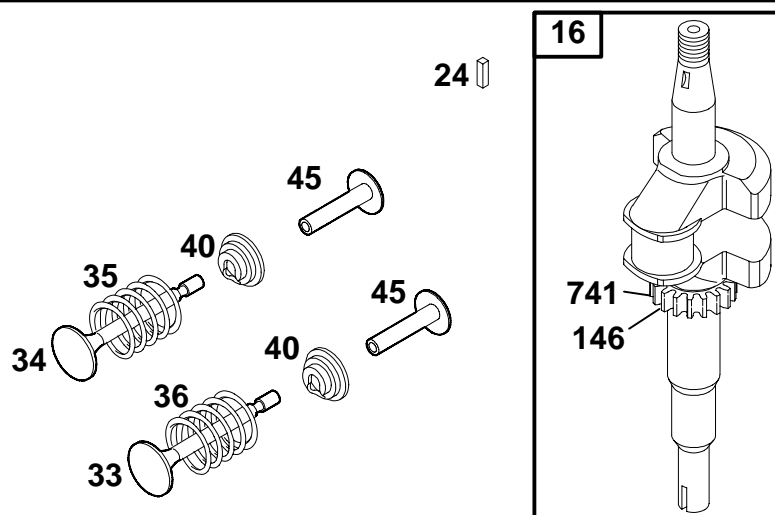


REF. NO.	PART NO.	DESCRIPTION	REF. NO.	PART NO.	DESCRIPTION	REF. NO.	PART NO.	DESCRIPTION						
25	499429	Piston Assembly (Standard) (Used After Code Date 97011200). ———— Note ——— 493262 Piston Assy. (Standard) (Used Before Code Date 97011300). 499430 Piston Assy. (.010 O.S.) (Used After Code Date 97011200). 493385 Piston Assy. (.010 O.S.) (Used Before Code Date 97011300). 499431 Piston Assy. (.020 O.S.) (Used After Code Date 97011200). 493386 Piston Assy. (.020 O.S.) (Used Before Code Date 97011300). 499432 Piston Assy. (.030 O.S.) (Used After Code Date 97011200). 493387 Piston Assy. (.030 O.S.) (Used Before Code Date 97011300).	26	499425	Ring Set (Standard) (Used After Code Date 97011200). ———— Note ——— 493261 Ring Set (Standard) (Used Before Code Date 97011300). 499426 Ring Set (.010 O.S.) (Used After Code Date 97011200). 493388 Ring Set (.010 O.S.) (Used Before Code Date 97011300). 499427 Ring Set (.020 O.S.) (Used After Code Date 97011200). 493389 Ring Set (.020 O.S.) (Used Before Code Date 97011300). 499428 Ring Set (.030 O.S.) (Used After Code Date 97011200). 493390 Ring Set (.030 O.S.) (Used Before Code Date 97011300).	27	263190	Piston Pin Lock (Used After Code Date 97011200). ———— Note ——— 26026 Piston Pin Lock (Used Before Code Date 97011300). 28	499423	Piston Pin (Standard) (Used After Code Date 97011200). ———— Note ——— 298909 Piston Pin (Standard) (Used Before Code Date 97011300). 298908 Piston Pin (.005 O.S.) (Used Before Code Date 97011300). 29	499424	Connecting Rod (Standard) (Used After Code Date 97011200). ———— Note ——— 490566 Connecting Rod (Standard) (Used Before Code Date 97011300). 490743 Connecting Rod (.020 Undersize) (Used Before Code Date 97011300). 32	94699	Screw (Connecting Rod)

★ Included in Engine Overhaul Gasket Set—Ref. No.358.
● Included in Carburetor Overhaul Kit—Ref. No. 121.

◆ Included in Carburetor Gasket Set—Ref. No. 977.
⊗ Included in Valve Overhaul Gasket Set—Ref. No. 1095.

12U800 to 12U899

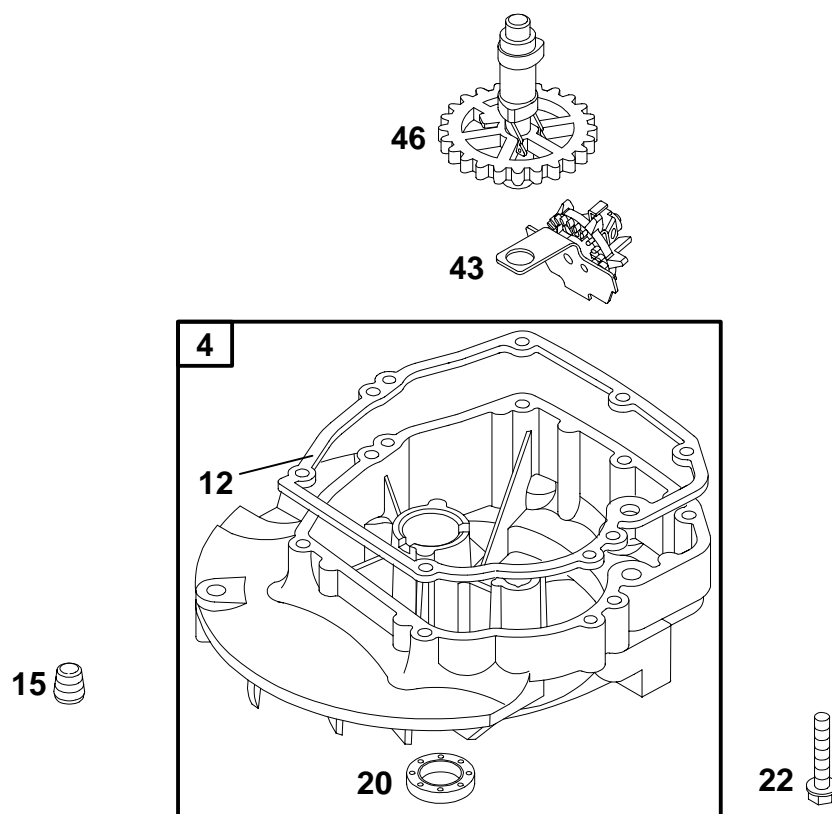


REF. NO.	PART NO.	DESCRIPTION	REF. NO.	PART NO.	DESCRIPTION	REF. NO.	PART NO.	DESCRIPTION
16	691451	Crankshaft (Used After Code Date 97011200). Used on Type No(s). 1176. ———— Note ———— 493362 Crankshaft (Used Before Code Date 97011300). Used on Type No(s). 1176. 692981 Crankshaft (Used After Code Date 97011200). Used on Type No(s). 0633, 1733. 496809 Crankshaft (Used Before Code Date 97011300). Used on Type No(s). 0633. 692994 Crankshaft Used on Type No(s). 0639, 1739, 3119. 694079 Crankshaft Used on Type No(s). 1740.	24	222698	Flywheel Key	40	93312	Valve Retainer
			33	262651	Exhaust Valve	45	690548	Valve Tappet
			34	262652	Intake Valve	146	94388	Timing Key
			35	691270	Valve Spring (Intake)	741	262598	Timing Gear
			36	691270	Valve Spring (Exhaust)			

★ Included in Engine Overhaul Gasket Set—Ref. No.358.
● Included in Carburetor Overhaul Kit—Ref. No. 121.

◆ Included in Carburetor Gasket Set—Ref. No. 977.
◊ Included in Valve Overhaul Gasket Set—Ref. No. 1095.

12U800 to 12U899

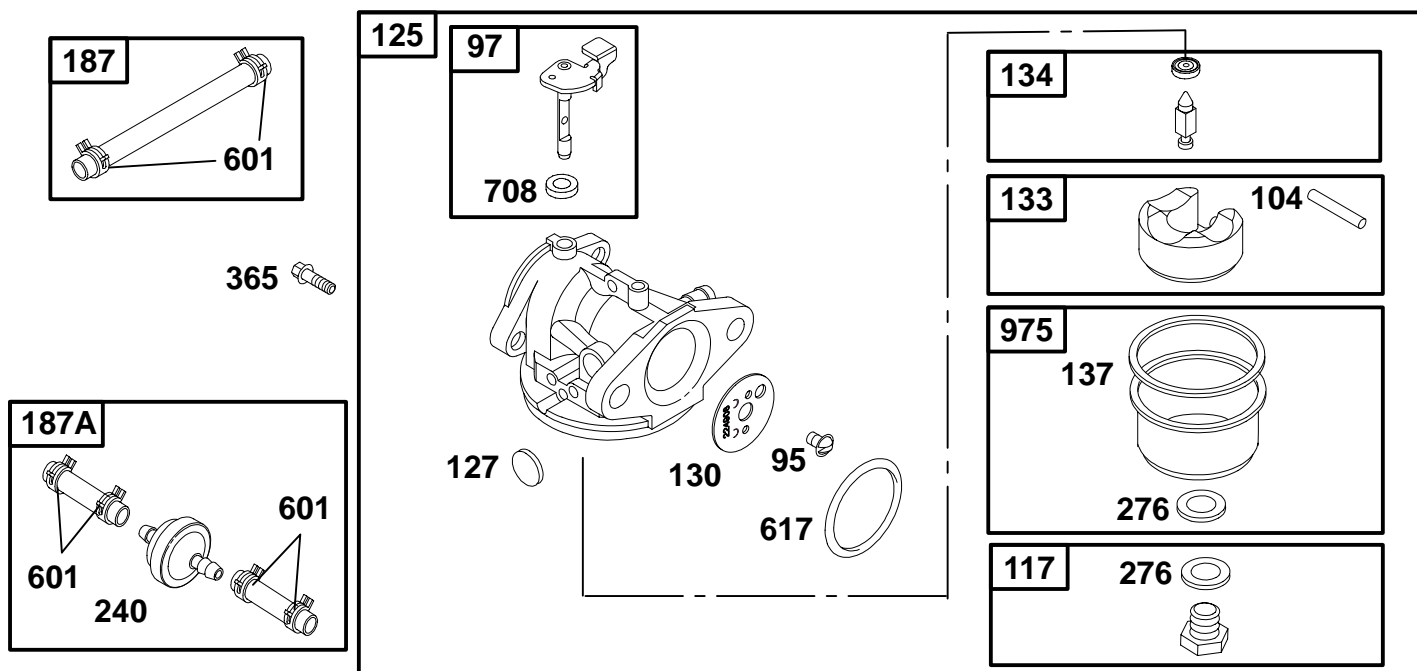


REF. NO.	PART NO.	DESCRIPTION	REF. NO.	PART NO.	DESCRIPTION	REF. NO.	PART NO.	DESCRIPTION
4	493279	Engine Sump	22	691092	Screw (Engine Sump)	46	691449	Camshaft (Used After Code Date 96060200).
12	★272198	Crankcase Gasket	Note 94612 Screw (Engine Sump) (One Used in Hole Nearest Breather)			Note 492828 Camshaft (Used Before Code Date 96060300).		
15	94880	Oil Drain Plug	43	493737	Governor/Oil Slinger			
20	★399781	Oil Seal (PTO Side)						

★ Included in Engine Overhaul Gasket Set-Ref. No.358.
 ● Included in Carburetor Overhaul Kit-Ref. No. 121.

◆ Included in Carburetor Gasket Set-Ref. No. 977.
 ∅ Included in Valve Overhaul Gasket Set-Ref. No. 1095.

12U800 to 12U899

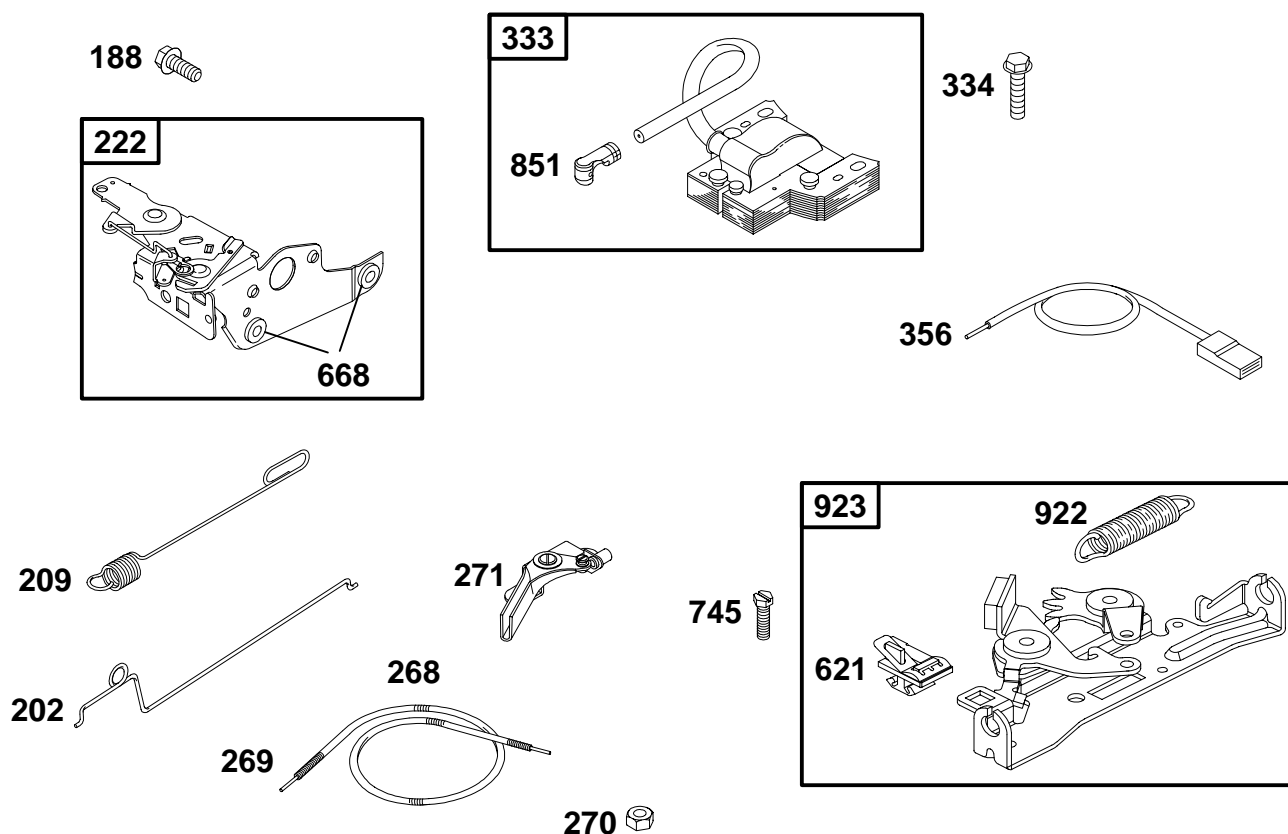


REF. NO.	PART NO.	DESCRIPTION	REF. NO.	PART NO.	DESCRIPTION	REF. NO.	PART NO.	DESCRIPTION
95	94098	Screw (Throttle Valve)	125	498966	Carburetor (Used After Code Date 96060200).	365	94525	Screw (Carburetor)
97	493267	Throttle Shaft				601	93053	Hose Clamp (Green)
104	●691242	Float Hinge Pin			Note	617	●270344	O-Ring Seal (Intake Manifold)
117	498975	Main Jet (Standard) (Used After Code Date 96060200).			498254 Carburetor (Used Before Code Date 96060300).	708	●691321	Dust Seal (Throttle Shaft)
		Note	127	●	Welch Plug (Sold in Kit Only)	975	493640	Float Bowl
		497466 Main Jet (Standard) (Used Before Code Date 96060300).	130	691203	Throttle Valve			
		496495 Main Jet (High Altitude)	133	398187	Carburetor Float			
			134	●398188	Needle/Seat Kit			
			137	●◆	Float Bowl Gasket (Sold in Kit Only)			
			187	492790	Fuel Line			
			187A	691371	Fuel Line			
			240	298090	Fuel Filter			
			276	●◆	Sealing Washer (Sold in Kit Only)			

★ Included in Engine Overhaul Gasket Set-Ref. No.358.
● Included in Carburetor Overhaul Kit-Ref. No. 121.

◆ Included in Carburetor Gasket Set-Ref. No. 977.
◇ Included in Valve Overhaul Gasket Set-Ref. No. 1095.

12U800 to 12U899

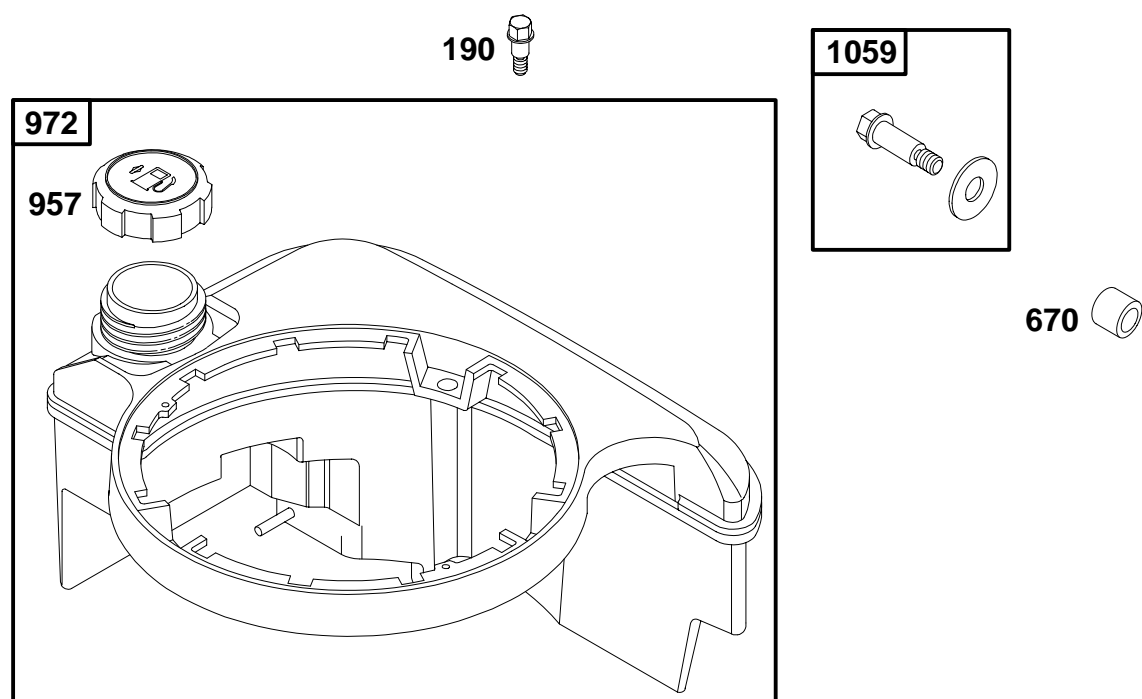


REF. NO.	PART NO.	DESCRIPTION	REF. NO.	PART NO.	DESCRIPTION	REF. NO.	PART NO.	DESCRIPTION
188	94644	Screw	222	691436	Control Bracket	334	94731	Screw
202	262579	Mechanical Governor Link	268	691072	Control Wire Casing (Cut To Required Length)			(Magneto Armature)
209	263044	Governor Spring	269	26099	Control Wire (Cut To Required Length)	356	692390	Stop Wire
		Note	270	63426	Nut (Control Wire Casing)	621	396847	Stop Switch
		691292 Governor Spring	271	290568	Control Lever	668	★493823	Spacer (Includes 2)
		Used on Type No(s). 0633, 1733.	333	802574	Magneto Armature	745	94512	Screw (Brake)
		263047 Governor Spring				851	493880	Spark Plug Terminal
		Used on Type No(s). 0639, 1739.				922	262640	Brake Spring
						923	493442	Brake

★ Included in Engine Overhaul Gasket Set-Ref. No.358.
 ● Included in Carburetor Overhaul Kit-Ref. No. 121.

◆ Included in Carburetor Gasket Set-Ref. No. 977.
 ∅ Included in Valve Overhaul Gasket Set-Ref. No. 1095.

12U800 to 12U899

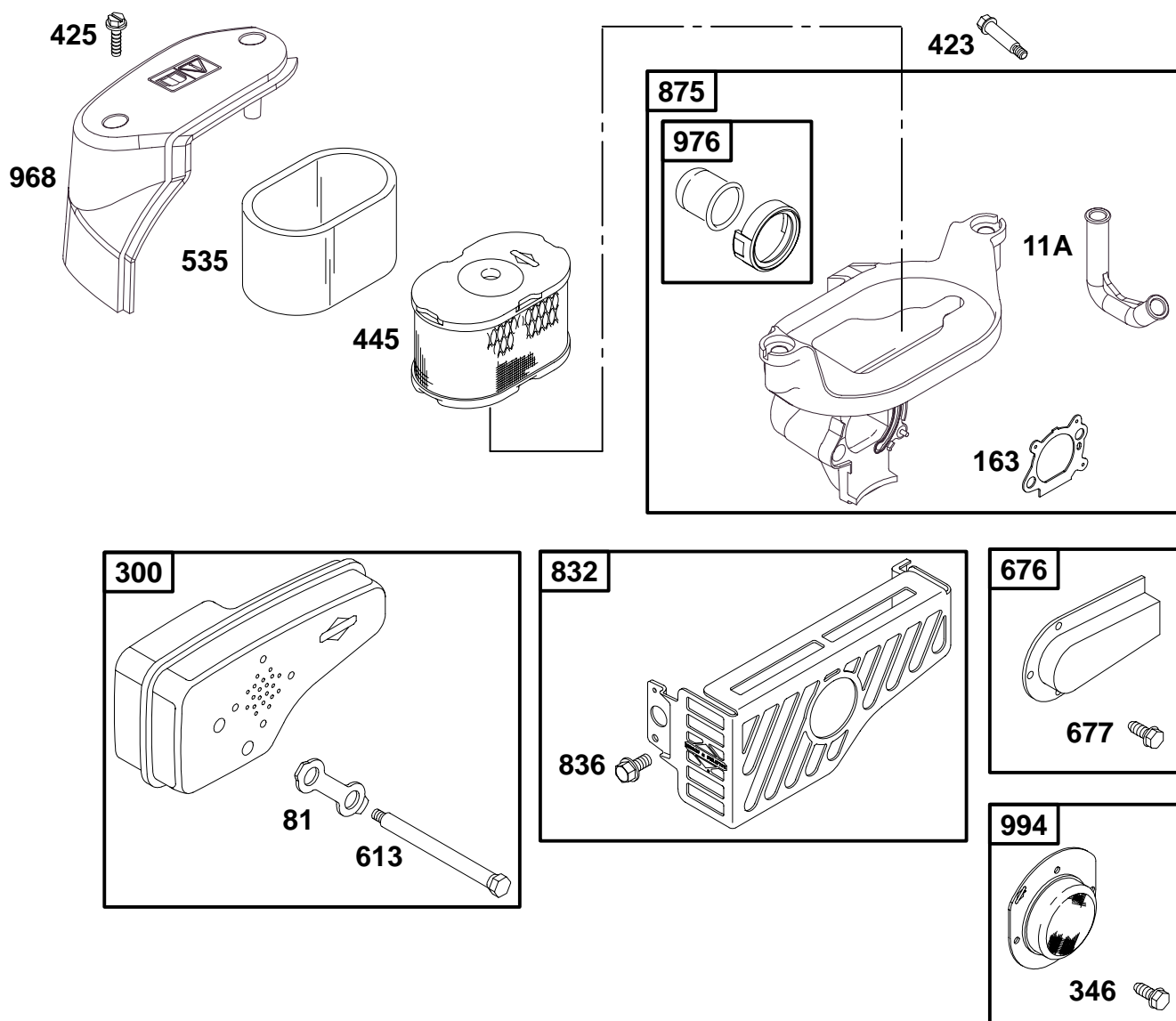


REF. NO.	PART NO.	DESCRIPTION	REF. NO.	PART NO.	DESCRIPTION	REF. NO.	PART NO.	DESCRIPTION
190	94511	Screw (Fuel Tank)	670	280512	Fuel Tank Spacer	972	495224	Fuel Tank
			957	397974	Fuel Tank Cap	1059	398540	Screw/Washer Kit

★ Included in Engine Overhaul Gasket Set-Ref. No.358.
 ● Included in Carburetor Overhaul Kit-Ref. No. 121.

◆ Included in Carburetor Gasket Set-Ref. No. 977.
 Ø Included in Valve Overhaul Gasket Set-Ref. No. 1095.

12U800 to 12U899



REF. NO.	PART NO.	DESCRIPTION	REF. NO.	PART NO.	DESCRIPTION	REF. NO.	PART NO.	DESCRIPTION
11A	281556	Breather Tube	445	497725	A/C Cartridge Filter	875	691439	Air Cleaner Primer Base
81	223664	Muffler Screw Lock	535	273185	Pre-Cleaner Filter (Exhaust Muffler)	968	498997	Air Cleaner Cover
163★◆	272653	Air Cleaner Gasket	613	94231	Screw (Muffler Deflector)	976	694395	Carburetor Primer (Used After Code Date 99103100).
300	496106	Exhaust Muffler	676	493871	Muffler Deflector	Note ————— 496115 Carburetor Primer (Used Before Code Date 9910100).		
346	94896	Screw (Spark Arrester)	677	94896	Screw (Muffler Deflector)			
423	690349	Screw (Air Cleaner Primer Base)	832	691442	Muffler Guard			
425	94777	Screw (Air Cleaner Primer Cover)	836	94874	Screw (Muffler Guard)	994	398067	Spark Arrester

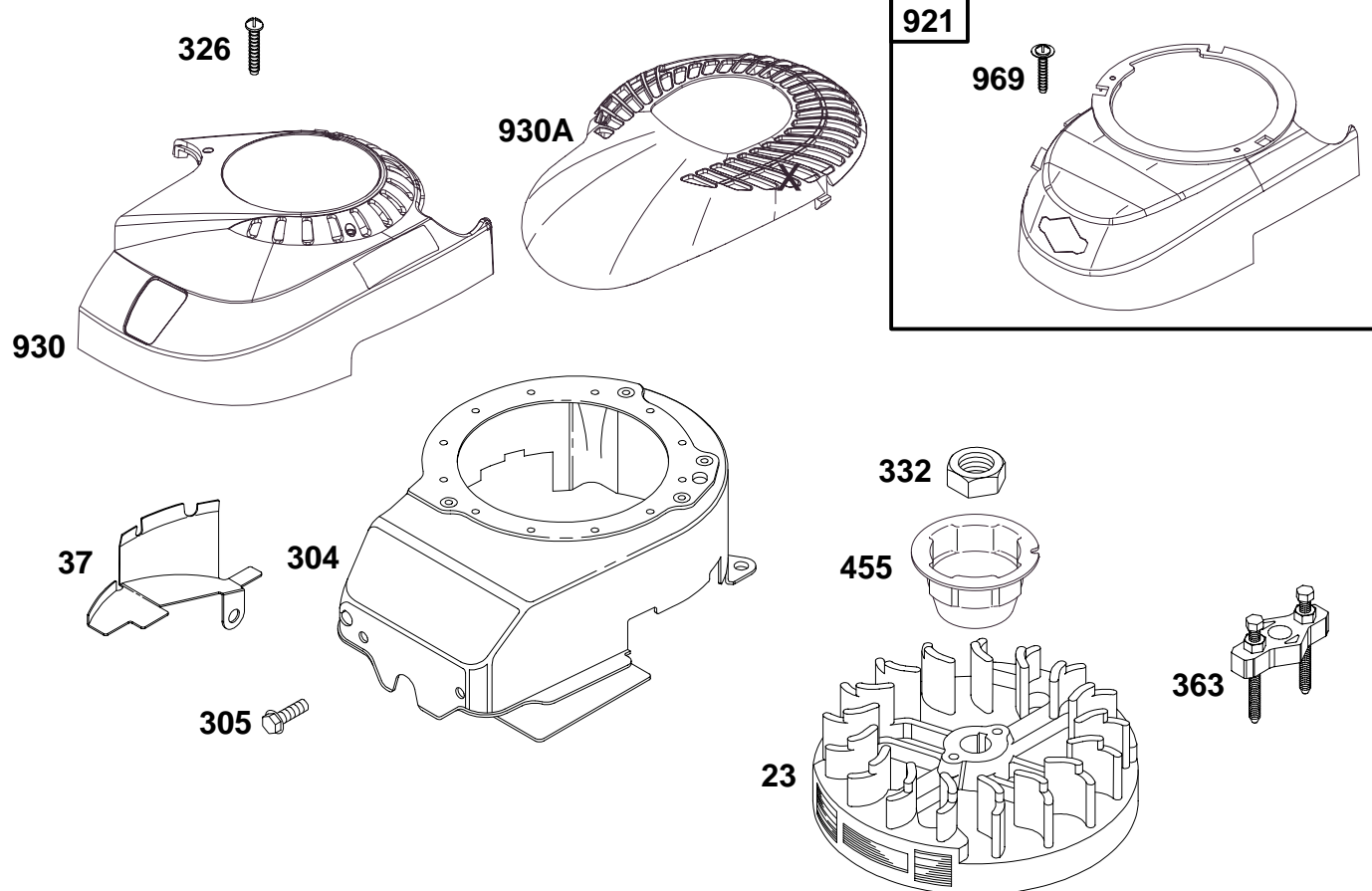
★ Included in Engine Overhaul Gasket Set-Ref. No.358.

● Included in Carburetor Overhaul Kit-Ref. No. 121.

◆ Included in Carburetor Gasket Set-Ref. No. 977.

⊘ Included in Valve Overhaul Gasket Set-Ref. No. 1095.

12U800 to 12U899



1036 EMISSIONS LABEL

REF. NO.	PART NO.	DESCRIPTION	REF. NO.	PART NO.	DESCRIPTION	REF. NO.	PART NO.	DESCRIPTION
23	492177	Flywheel	332	94877	Flywheel Nut	1036	694458	Emissions Label
37	224511	Flywheel Guard	363	19069	Flywheel Puller			Used on Type No(s).
304	493293	Blower Housing	455	691219	Flywheel Cup			1733, 1739, 1740,
305	691108	Screw	921	691468	Blower Housing Cover			3119.
		(Blower Housing)	930	691345	Rewind Guard			(Used After Code Date
326	94696	Screw	930A	691339	Rewind Guard			98123100).
		(Rewind Guard)	969	691138	Screw			Note
					(Blower Housing			499341 Emissions
					Cover)			Label
								Used on Type No(s).
								1733, 1739, 3119.
								(Used Before Code
								Date 99010100).

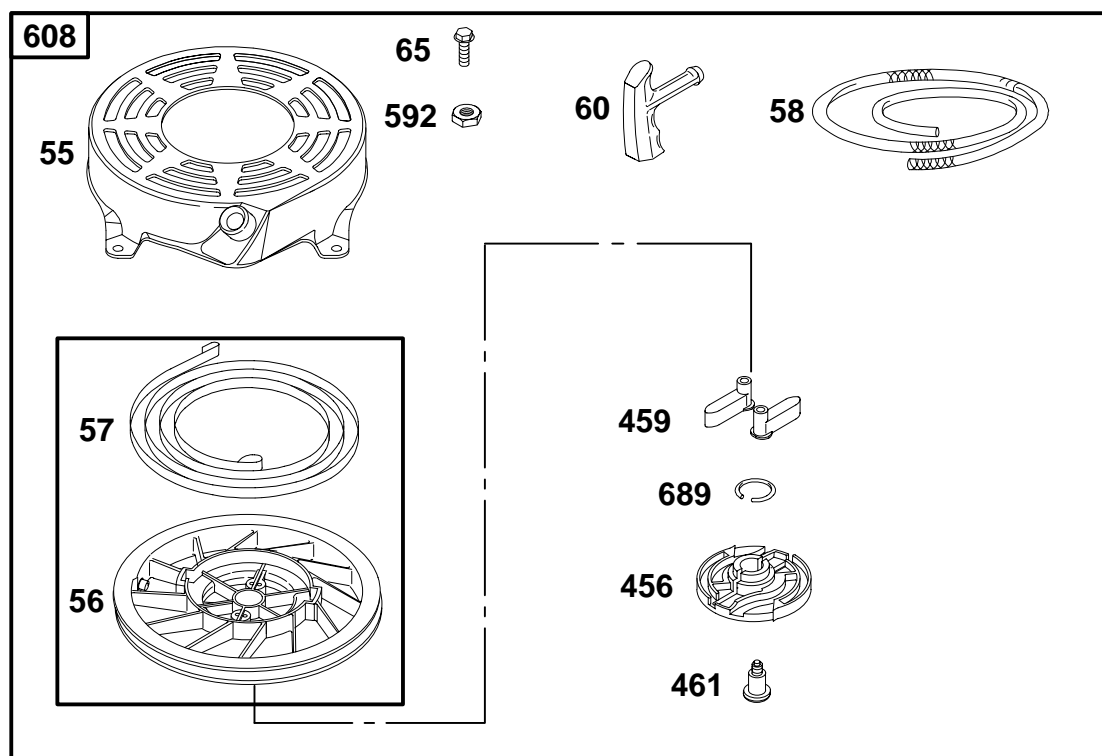
★ Included in Engine Overhaul Gasket Set-Ref. No.358.

● Included in Carburetor Overhaul Kit-Ref. No. 121.

◆ Included in Carburetor Gasket Set-Ref. No. 977.

⌀ Included in Valve Overhaul Gasket Set-Ref. No. 1095.

12U800 to 12U899

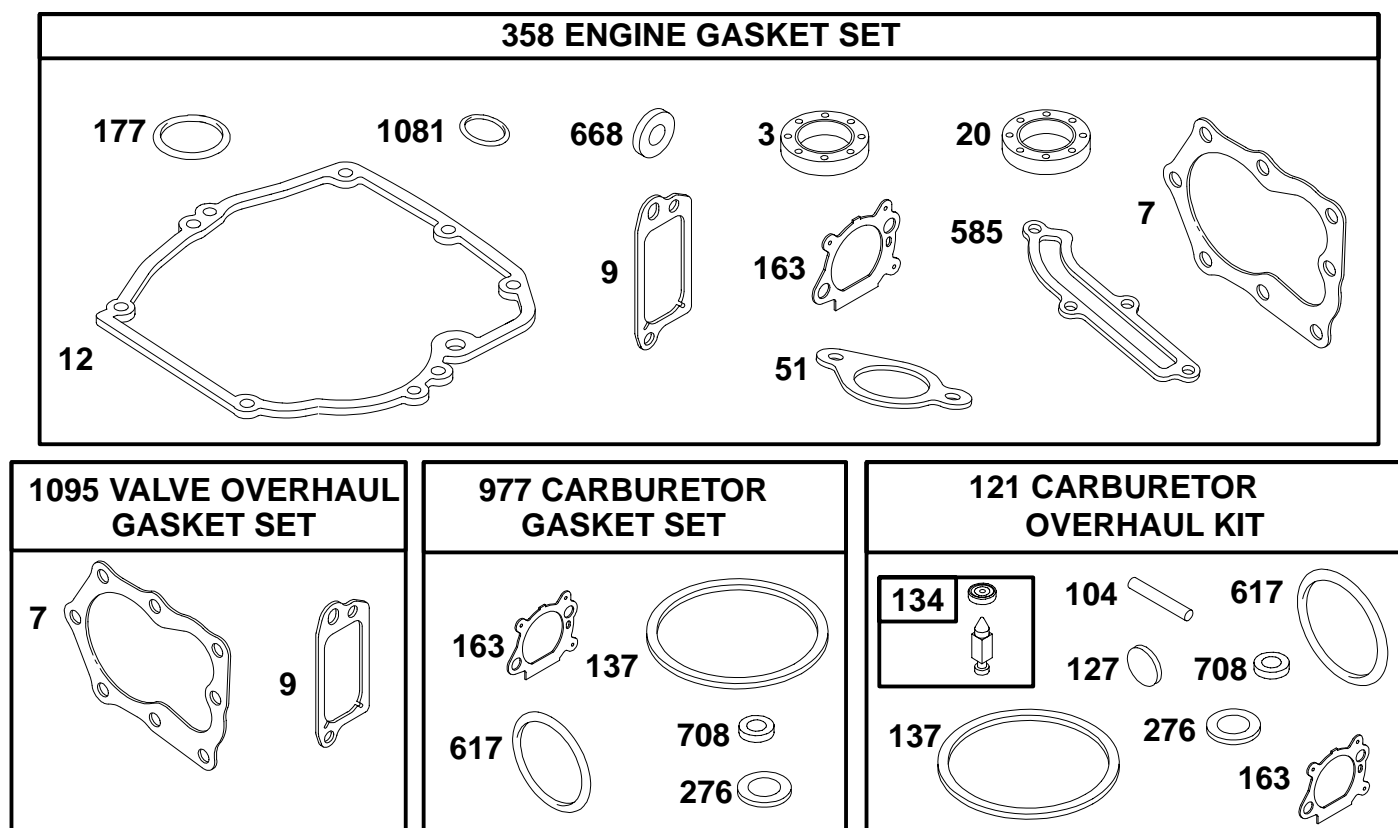


REF. NO.	PART NO.	DESCRIPTION	REF. NO.	PART NO.	DESCRIPTION	REF. NO.	PART NO.	DESCRIPTION
55	691421	Rewind Starter Housing	58	280399	Starter Rope (Cut To Required Length)	459	281505	Ratchet Pawl
56	498144	Pulley/Spring Assembly	60	281434	Starter Rope Grip	461	94943	Screw (Pawl Friction Plate)
57	498144	Pulley/Spring Assembly	65	94686	Screw (Rewind Starter)	592	94908	Nut (Rewind Starter)
			456	281503	Pawl Friction Plate	608	497680	Rewind Starter
						689	263073	Friction Spring

★ Included in Engine Overhaul Gasket Set-Ref. No.358.
● Included in Carburetor Overhaul Kit-Ref. No. 121.

◆ Included in Carburetor Gasket Set-Ref. No. 977.
⌀ Included in Valve Overhaul Gasket Set-Ref. No. 1095.

12U800 to 12U899



REF. NO.	PART NO.	DESCRIPTION	REF. NO.	PART NO.	DESCRIPTION	REF. NO.	PART NO.	DESCRIPTION
3	★299819	Oil Seal (Magneto Side)	127	●	Welch Plug (Sold in Kit Only)	585	★272238	Breather Gasket
7	★272916	Cylinder Head Gasket	134	●398188	Needle/Seat Kit	617	●◆270344	O-Ring Seal (Intake Manifold)
9	★272481	Breather Gasket	137	●◆	Float Bowl Gasket (Sold in Kit Only)	668	★493823	Spacer (Includes 2)
12	★272198	Crankcase Gasket	163	★◆272653	Air Cleaner Gasket	708	●◆691321	Dust Seal (Throttle Shaft)
20	★399781	Oil Seal (PTO Side)	276	●◆	Sealing Washer (Sold in Kit Only)	842	★280393	Dipstick/Tube Seal
51	★272199	Intake Gasket	358	497316	Engine Overhaul Gasket Set	977	498261	Carburetor Gasket Set
104	●691242	Float Hinge Pin	524	★280966	Dipstick/Tube Seal	1095	498528	Valve Overhaul Gasket Set
121	498260	Carburetor Overhaul Kit						

★ Included in Engine Overhaul Gasket Set-Ref. No.358.
● Included in Carburetor Overhaul Kit-Ref. No. 121.

◆ Included in Carburetor Gasket Set-Ref. No. 977.
◊ Included in Valve Overhaul Gasket Set-Ref. No. 1095.