

12T700 to 12T799

Illustrated Parts List

Model Series

12T700 to 12T799

TYPE NUMBERS

0651, 0660, 0671,
0672, 0673, 0674,
0675.

TO FIND**THE CORRECT NUMBER OF THE PART YOU NEED:
FOLLOW THE INSTRUCTIONS BELOW**

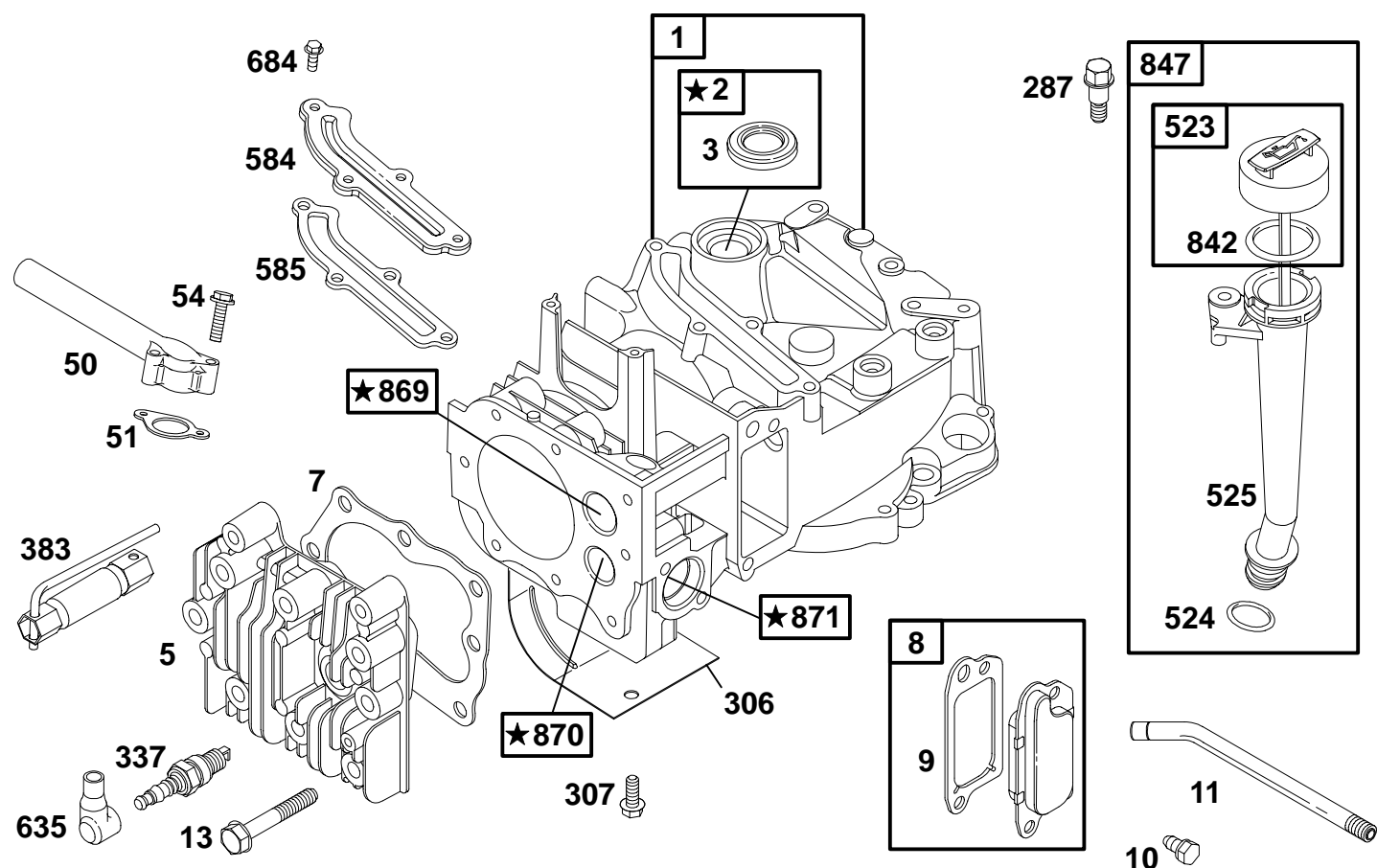
- A. Refer to Engine Model, Type and Code Number that is stamped on the blower housing of engine. Engine type numbers such as 0123 01 are listed only as 0123 in most instances. The two digits (01 or 02, etc.) to the right of the space may be required for more accurate parts identification in some instances. Select the Illustrated Parts List covering the correct Model Series and Type Number.
- B. Refer to the Illustrations and compare the original part with Illustration. The number next to the illustration is the Reference Number. Assemblies include all parts shown in frames. All parts shown in assembly frames having individual reference numbers can be purchased separately.
- C. After the Reference Number has been identified, refer to the Numerical text, where Reference and Primary Part Number are listed. **THE PRIMARY PART IS USED ON ALL TYPE NUMBERS EXCEPT THOSE TYPE NUMBERS UNDER "NOTE."**
- D. If a "Note" appears below the Primary Part Number, it means that this part differs from the Primary Part for certain types. If your Type number is listed under "Note," order the part referred to at the "Note."
- E. If your Engine Type Number does not appear after any part number listed under "Note," use the Primary Part Number.
- F. For Engine Type Numbers not covered by this book, check other Parts Lists having the same engine model or contact your source of supply.

PRINTED IN U.S.A.



COPYRIGHT by BRIGGS & STRATTON CORPORATION
All rights reserved. No part of this material may be reproduced or transmitted, in any form or by any means, electronic or mechanical, including photocopying, recording or by any information storage and retrieval system, without permission in writing from Briggs & Stratton Corporation.

12T700 to 12T799



1019 LABEL KIT

1058 OWNER'S MANUAL

★ REQUIRES SPECIAL TOOLS TO INSTALL. SEE REPAIR INSTRUCTION MANUAL.

REF. NO.	PART NO.	DESCRIPTION	REF. NO.	PART NO.	DESCRIPTION	REF. NO.	PART NO.	DESCRIPTION
1	493260	Cylinder Assembly	50	497465	Intake Manifold	635	66538	Spark Plug Boot
2	399269	Bushing/Seal Kit (Magneto Side)	51	★272199	Intake Gasket	684	690345	Screw (Breather Passage Cover)
3	★299819	Oil Seal (Magneto Side)	54	94526	Screw (Intake Manifold)	847	495263	Dipstick/Tube Assembly
5	691160	Cylinder Head (Used After Code Date 98062100).	842	★280393	Dipstick/Tube Seal	869	691155	Seat-Valve (Intake)
Note			287	94511	Screw (Dipstick Tube)	870	690380	Seat-Valve (Exhaust)
	214626	Cylinder Head (Used Before Code Date 98062200).	306	690450	Shield-Cylinder	871	262001	Bushing Guide (Exhaust Valve)
7	★272916	Cylinder Head Gasket	307	690345	Screw (Cylinder Shield)	Note		
8	495786	Breather Assembly	337	802592	Spark Plug		63709	Bushing Guide (Intake Valve)
9	★272481	Breather Gasket	383	89838	Spark Plug Wrench	1019	494256	Label Kit
10	691125	Screw (Breather Assembly)	523	495264	Dipstick	1058	272262	Owner's Manual
11	231933	Breather Tube	524	★280966	Dipstick/Tube Seal			
13	94547	Screw (Cylinder Head)	525	495265	Dipstick Tube			
			584	692342	Breather Passage Cover			
			585	★272238	Breather Passage Gasket			

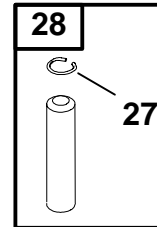
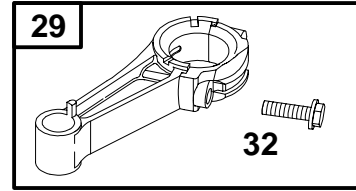
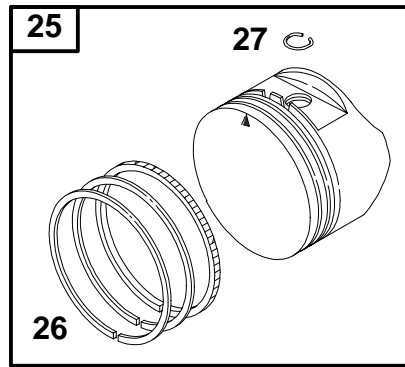
★ Included in Gasket Set—See Ref. No. 358.

● Included in Carburetor Kit—See Ref. 121.

◆ Included in Carburetor Gasket Set—See Ref. 977.

◊ Included in Valve Overhaul Gasket Set—See Ref. No. 1095.

12T700 to 12T799

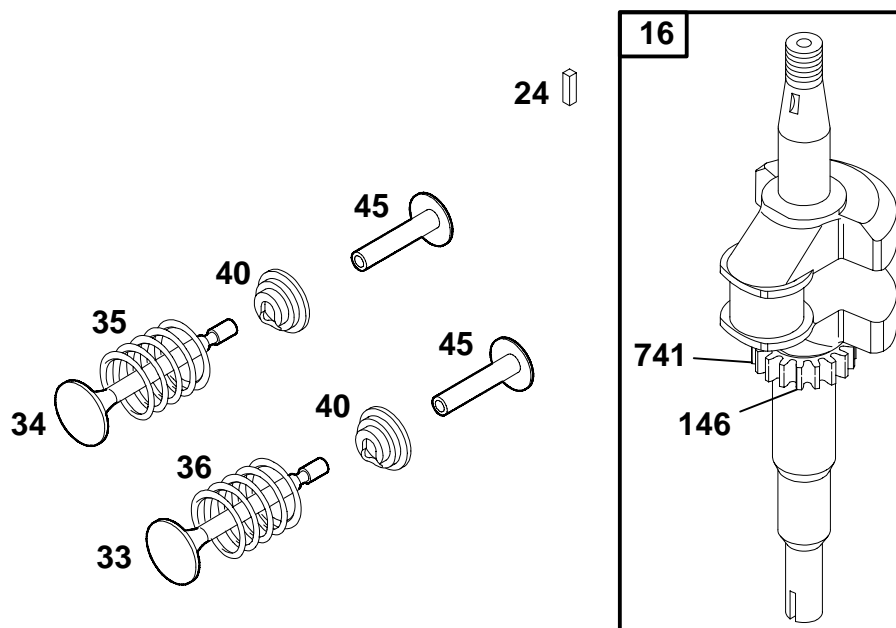


REF. NO.	PART NO.	DESCRIPTION	REF. NO.	PART NO.	DESCRIPTION	REF. NO.	PART NO.	DESCRIPTION
25	499429	Piston Assembly (Standard) (Used After Code Date 97011200). Note 493262 Piston Assy. (Standard) (Used Before Code Date 97011300). 499430 Piston Assy. (.010" O.S.) (Used After Code Date 97011200). 493385 Piston Assy. (.010" O.S.) (Used Before Code Date 97011300). 499431 Piston Assy. (.020" O.S.) (Used After Code Date 97011200). 493386 Piston Assy. (.020" O.S.) (Used Before Code Date 97011300). 499432 Piston Assy. (.030" O.S.) (Used After Code Date 97011200). 493387 Piston Assy. (.030" O.S.) (Used Before Code Date 97011300).	26	499425	Ring Set (Standard) (Used After Code Date 97011200). Note 493261 Ring Set (Standard) (Used Before Code Date 97011300). 499426 Ring Set (.010" O.S.) (Used After Code Date 97011200). 493388 Ring Set (.010" O.S.) (Used Before Code Date 97011300). 499427 Ring Set (.020" O.S.) (Used After Code Date 97011200). 493389 Ring Set (.020" O.S.) (Used Before Code Date 97011300). 499428 Ring Set (.030" O.S.) (Used After Code Date 97011200). 493390 Ring Set (.030" O.S.) (Used Before Code Date 97011300).	27	263190	Piston Pin Lock (Used After Code Date 97011200). Note 26026 Piston Pin Lock (Used Before Code Date 97011300). 28 499423 Piston Pin (Standard) (Used After Code Date 97011200). Note 298909 Piston Pin (Standard) (Used Before Code Date 97011300). 298908 Piston Pin (.005" O.S.) (Used Before Code Date 97011300). 29 499424 Connecting Rod (Standard) (Used After Code Date 97011200). Note 490566 Connecting Rod (Standard) (Used Before Code Date 97011300). 490743 Connecting Rod (.020" Undersize) (Used Before Code Date 97011300). 32 94699 Screw (Connecting Rod)

★ Included in Gasket Set—See Ref. No. 358.
● Included in Carburetor Kit—See Ref. 121.

◆ Included in Carburetor Gasket Set—See Ref. 977.
◊ Included in Valve Overhaul Gasket Set—See Ref. No. 1095.

12T700 to 12T799



REF. NO.	PART NO.	DESCRIPTION	REF. NO.	PART NO.	DESCRIPTION	REF. NO.	PART NO.	DESCRIPTION
16	691450	Crankshaft (Used After Code Date 97011200). Note 493282 Crankshaft (Used Before Code Date 97011300). 691452 Crankshaft (Used After Code Date 97011200). Used on Type No(s). 0651. 493363 Crankshaft (Used Before Code Date 97011300). Used on Type No(s). 0651.		691451	Crankshaft (Used After Code Date 97011200). Used on Type No(s). 0671. 493362 Crankshaft (Used Before Code Date 97011300). Used on Type No(s). 0671. 691455 Crankshaft (Used After Code Date 97011200). Used on Type No(s). 0660. 691375 Crankshaft (Used Before Code Date 97011300). Used on Type No(s). 0660.	24	222698	Flywheel Key
						33	262651	Exhaust Valve
						34	262652	Intake Valve
						35	691270	Valve Spring (Intake)
						36	691270	Valve Spring (Exhaust)
						40	690548	Valve Retainer
						45	690548	Valve Tappet
						146	94388	Timing Key
						741	262598	Gear-Timing

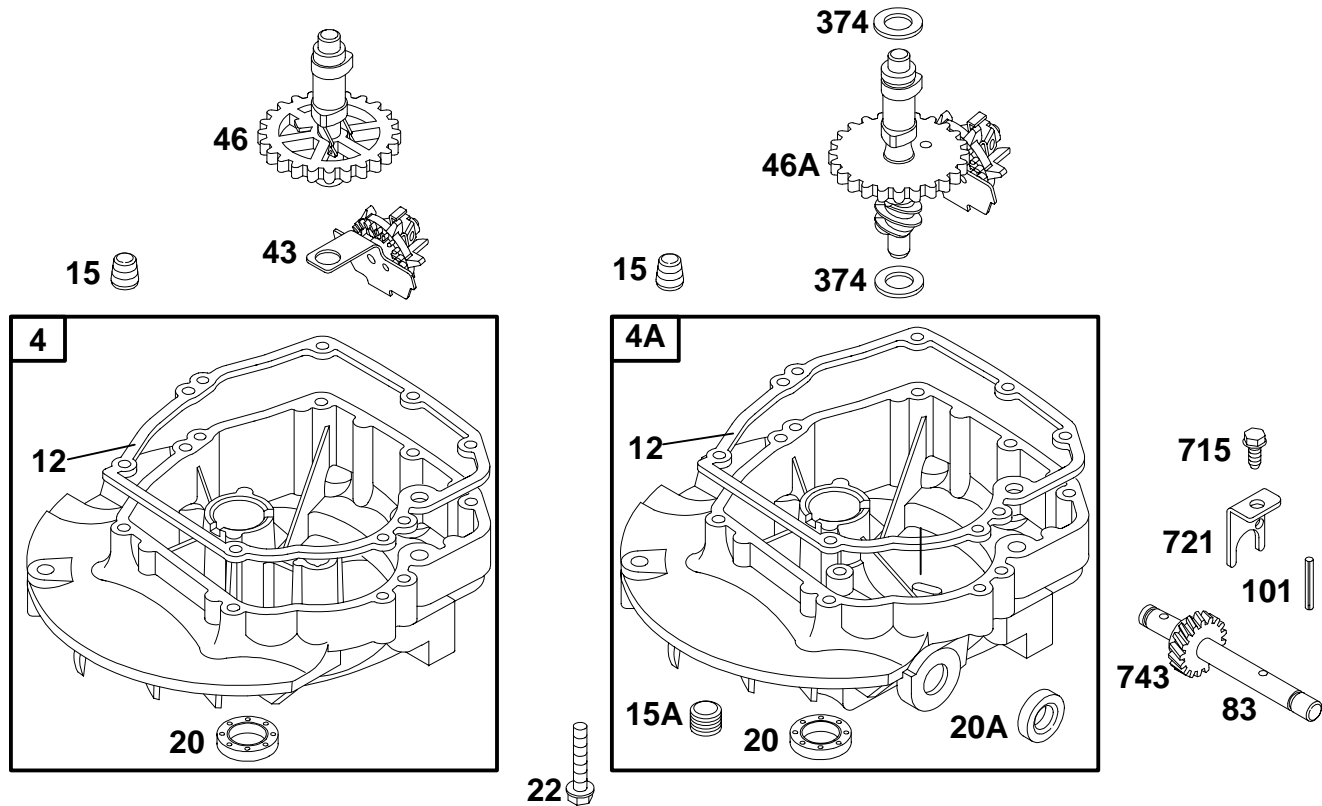
★ Included in Gasket Set—See Ref. No. 358.

● Included in Carburetor Kit—See Ref. 121.

◆ Included in Carburetor Gasket Set—See Ref. 977.

◊ Included in Valve Overhaul Gasket Set—See Ref. No. 1095.

12T700 to 12T799

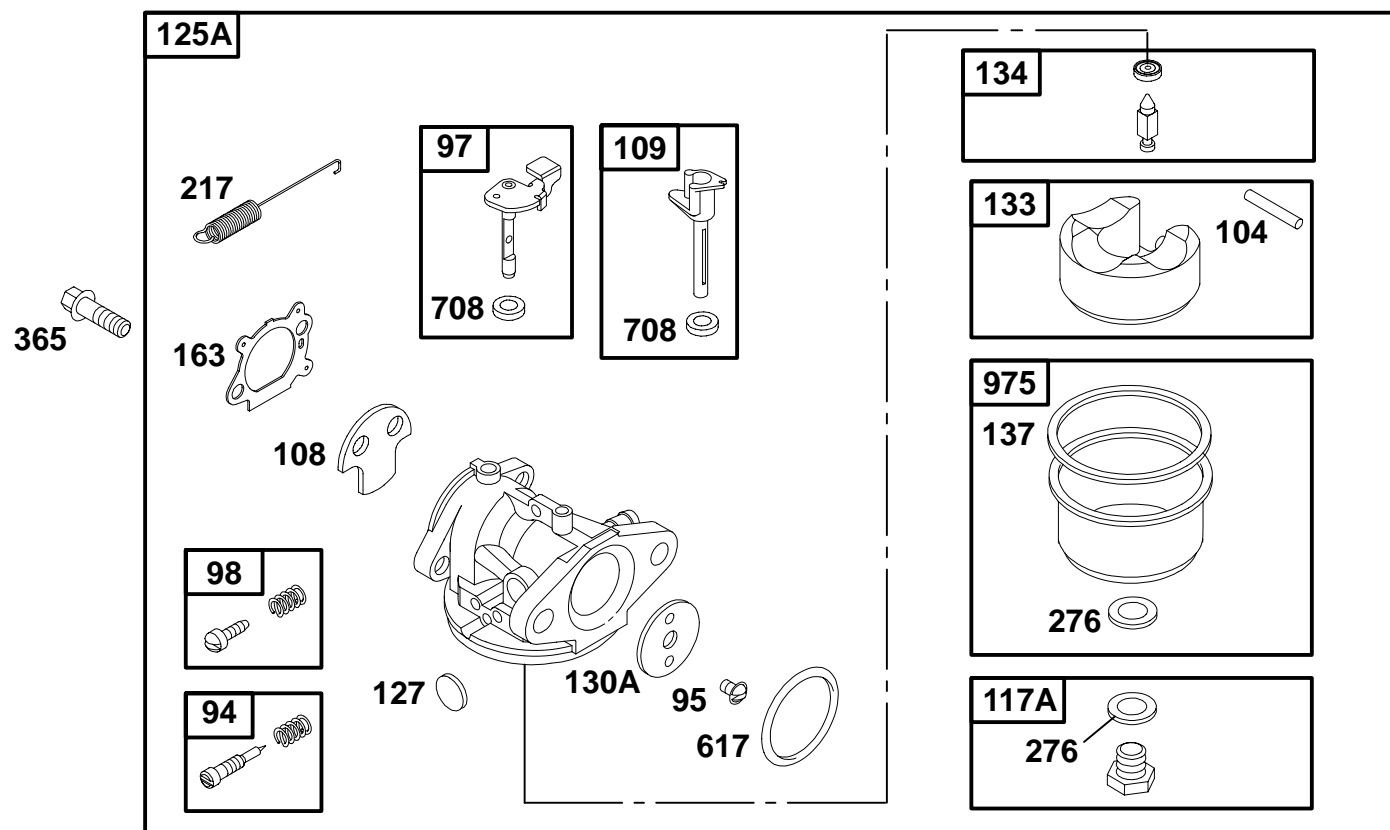


REF. NO.	PART NO.	DESCRIPTION	REF. NO.	PART NO.	DESCRIPTION	REF. NO.	PART NO.	DESCRIPTION
4	493279	Engine Sump	46	691449	Camshaft Used on Type No(s). 0651, 0660, 0671. (Used After Code Date 96060200). Note 492830 Camshaft (Used Before Code Date 96060300). Used on Type No(s). 0651, 0660, 0671. 492828 Camshaft Used on Type No(s). 0674.			691459 Camshaft (Counterclockwise) Used on Type No(s). 0673, 0675. (Used After Code Date 96060200). 493738 Camshaft (Counterclockwise) Used on Type No(s). 0673, 0675. (Used Before Code Date 96060300).
4A	493365	Engine Sump				83	231671	Auxiliary Drive Shaft
12	★272198	Crankcase Gasket	46A	691460	Camshaft (Clockwise) Used on Type No(s). 0672. (Used After Code Date 96060200). Note 493740 Camshaft (Clockwise) (Used Before Code Date 96060300). Used on Type No(s). 0672.	101	93474	Shaft Pin
15	94880	Oil Drain Plug				374	691074	Washer (Camshaft)
15A	691093	Oil Drain Plug				715	94874	Screw (Shaft Stop)
20	★399781	Oil Seal (PTO Side)				721	690449	Stop-Shaft
20A	391484	Oil Seal (PTO Side)				743	690516	Gear-Drive (Clockwise) Used on Type No(s). 0672.
22	691092	Screw (Engine Sump)						Note 231279 Gear-Drive (Counterclockwise) Used on Type No(s). 0673, 0675.
		Note 94612 Screw (Engine Sump) One Used in Hole Nearest Breather.						
43	493737	Governor/Oil Slinger						

★ Included in Gasket Set—See Ref. No. 358.
● Included in Carburetor Kit—See Ref. 121.

◆ Included in Carburetor Gasket Set—See Ref. 977.
◊ Included in Valve Overhaul Gasket Set—See Ref. No. 1095.

12T700 to 12T799



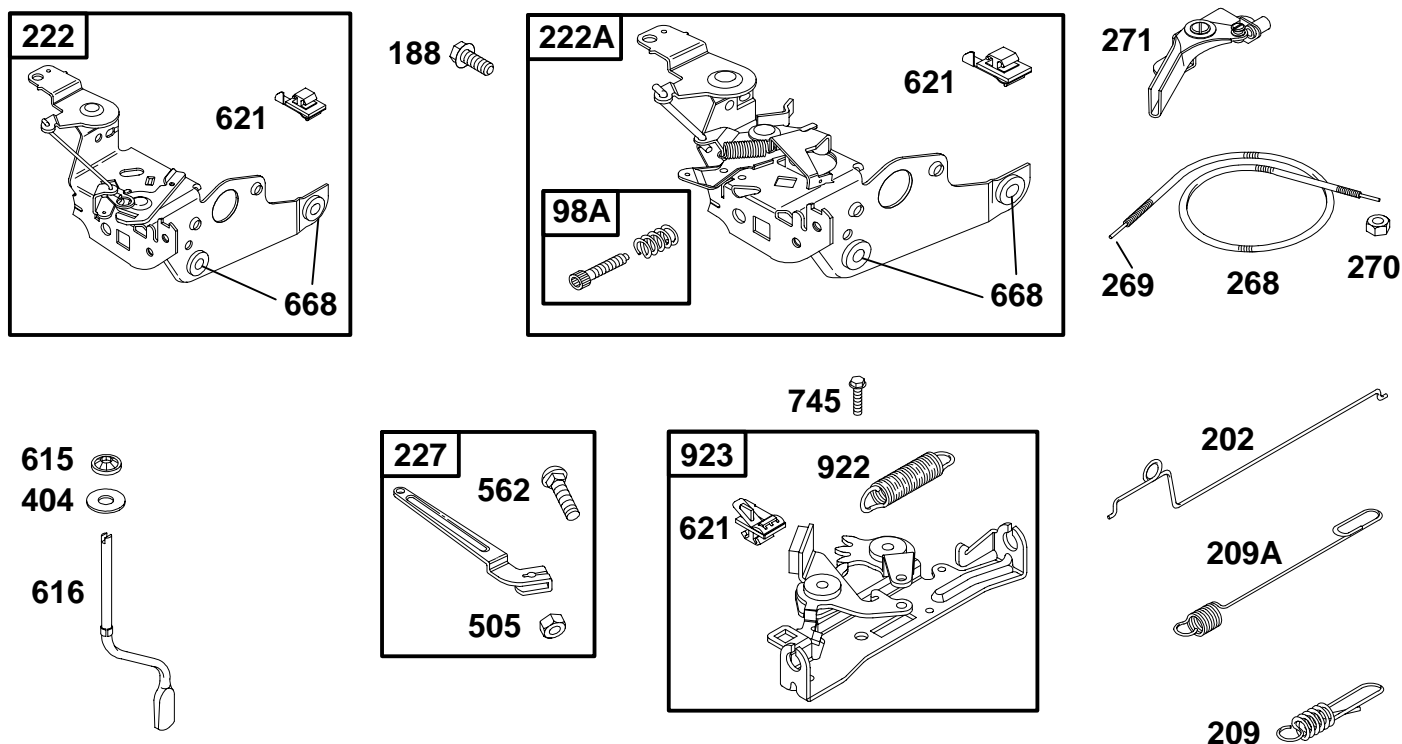
CHOKE SYSTEM

REF. NO.	PART NO.	DESCRIPTION	REF. NO.	PART NO.	DESCRIPTION	REF. NO.	PART NO.	DESCRIPTION
94	493765	Idle Mixture Kit			498981 Main Jet (High Altitude) (Used After Code Date 96060200).			494216 Carburetor (Choke System) (Used on Type No(s). 0674.
95	94098	Screw (Throttle Shaft)			496063 Main Jet (High Altitude) (Used Before Code Date 96060300).	127	•	Welch Plug (Sold in Kit Only)
97	493267	Throttle Shaft			496063 Main Jet (High Altitude) (Used Before Code Date 96060300).	130A	691181	Throttle Valve
98	398185	Idle Speed Kit			496063 Main Jet (High Altitude) (Used Before Code Date 96060300).	133	398187	Carburetor Float
104	•691242	Float Hinge Pin			496063 Main Jet (High Altitude) (Used Before Code Date 96060300).	134	•398188	Needle/Seat Kit
108	691182	Choke Valve			496063 Main Jet (High Altitude) (Used Before Code Date 96060300).	137	•◆	Float Bowl Gasket (Sold in Kit Only)
109	494218	Choke Shaft			496063 Main Jet (High Altitude) (Used Before Code Date 96060300).	163★◆	272653	Air Cleaner Gasket
117A	498977	Main Jet (Standard) (Used After Code Date 96060200).			496063 Main Jet (High Altitude) (Used Before Code Date 96060300).	217	262749	Choke Retainer Spring
		Note	125A	498965	Carburetor (Choke System) (Used After Code Date 96060200).	276	◆	Sealing Washer (Sold in Kit Only)
		493637 Main Jet (Standard) (Used Before Code Date 96060300).			494217 Carburetor (Choke System) (Used Before Code Date 96060300).	365	94525	Screw (Carburetor)
		493637 Main Jet (Standard) (Used on Type No(s). 0674.				617	◆◆270344	O-Ring Seal (Intake Manifold)
						708	◆◆691321	Seal-Dust
						975	493640	Float Bowl

★ Included in Gasket Set—See Ref. No. 358.
 • Included in Carburetor Kit—See Ref. 121.

◆ Included in Carburetor Gasket Set—See Ref. 977.
 ◊ Included in Valve Overhaul Gasket Set—See Ref. No. 1095.

12T700 to 12T799

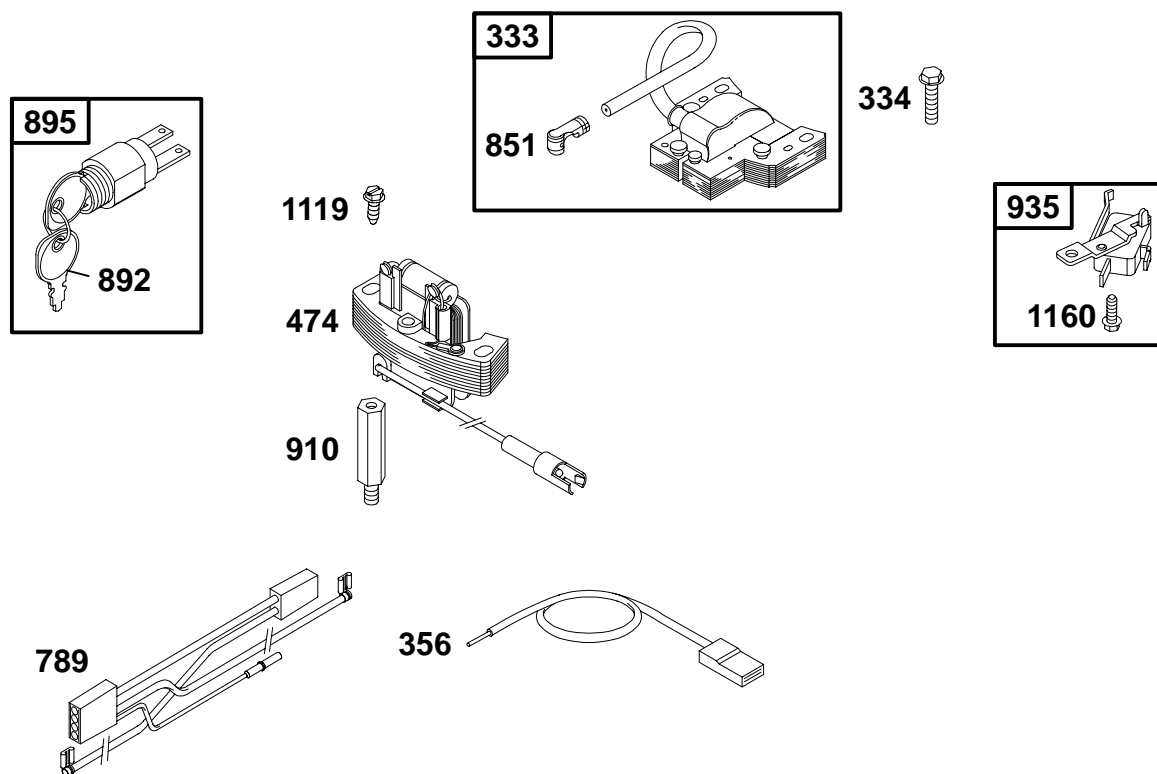


REF. NO.	PART NO.	DESCRIPTION	REF. NO.	PART NO.	DESCRIPTION	REF. NO.	PART NO.	DESCRIPTION
98A	493280	Idle Speed Kit	222	497203	Control Bracket Used with Primer Type Carburetor	404	690272	Washer
188	94644	Screw (Control Bracket)	222A	495975	Control Bracket Used with Choke Type Carburetor	505	231082	Nut (Governor Lever)
202	262579	Mechanical Governor Link	227	690783	Governor Control Lever	562	691119	Bolt (Governor Lever)
209	690569	Governor Spring	268	691072	Control Wire Casing (Cut to Required Length)	615	690340	Retainer-Governor Shaft
		Note	269	26099	Control Wire (Cut to Required Length)	616	691306	Crank-Governor
		690567 Governor Spring Used on Type No(s). 0660.	270	63426	Nut (Control Wire Casing)	621	396847	Switch-Stop
209A	263042	Governor Spring Used on Type No(s). 0651.	271	290568	Control Lever	668	★493823	Spacer (Includes 2)
						745	94512	Screw (Brake)
						922	262640	Spring-Brake
						923	493442	Brake

★ Included in Gasket Set-See Ref. No. 358.
● Included in Carburetor Kit-See Ref. 121.

◆ Included in Carburetor Gasket Set-See Ref. 977.
◊ Included in Valve Overhaul Gasket Set-See Ref. No. 1095.

12T700 to 12T799

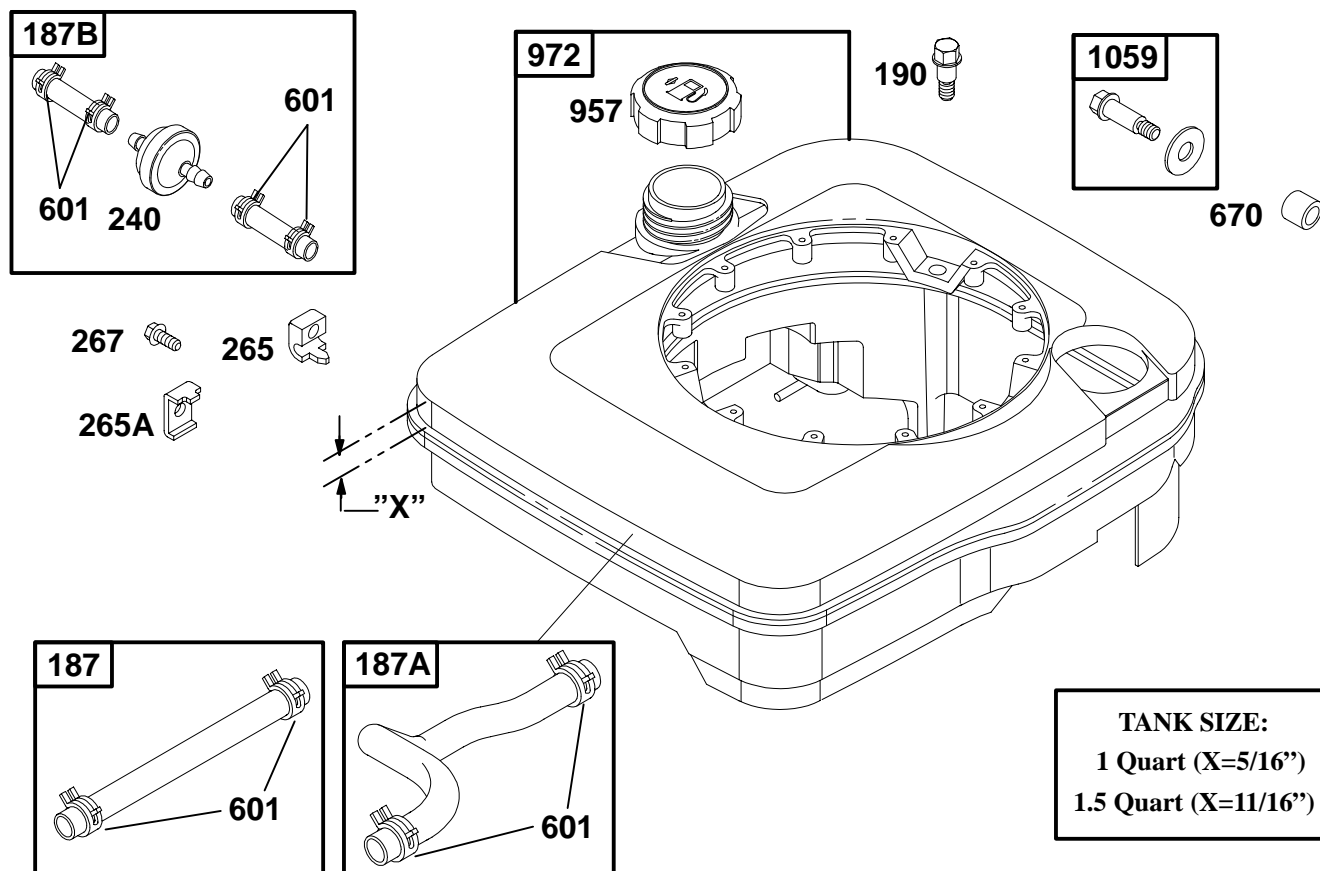


REF. NO.	PART NO.	DESCRIPTION	REF. NO.	PART NO.	DESCRIPTION	REF. NO.	PART NO.	DESCRIPTION
333	802574	Magneto Armature	851	493880	Spark Plug Terminal	935	398758	Switch-Interlock
334	94731	Screw (Magneto Armature)	892	392832	Key Set	1119	94512	Screw (Alternator)
356	692390	Stop Wire	895	690646	Switch Key	1160	93758	Screw (Interlock Switch)
474	492841	Alternator	910	691094	Stud (Alternator)			
789	691372	Harness-Wiring						

★ Included in Gasket Set-See Ref. No. 358.
● Included in Carburetor Kit-See Ref. 121.

◆ Included in Carburetor Gasket Set-See Ref. 977.
Ø Included in Valve Overhaul Gasket Set-See Ref. No. 1095.

12T700 to 12T799

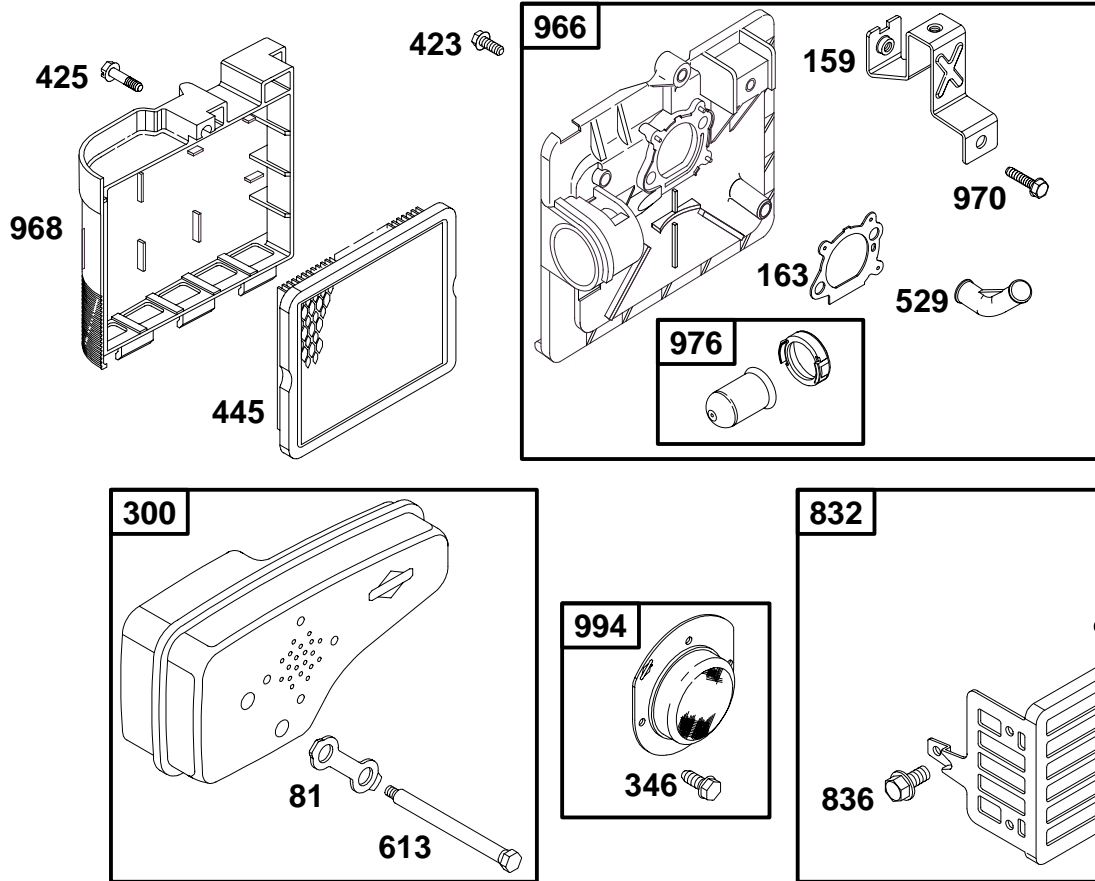


REF. NO.	PART NO.	DESCRIPTION	REF. NO.	PART NO.	DESCRIPTION	REF. NO.	PART NO.	DESCRIPTION
187	492790	Fuel Line (Cut to Required Length)	265	213146	Casing Clamp	972	497343	Fuel Tank (Black, 1 Quart)
187A	691371	Fuel Line (Molded)	265A	221535	Casing Clamp			Note
187B	498171	Fuel Line	267	94882	Screw (Casing Clamp)			497226 Fuel Tank (Black, 1-1/2 Quart)
190	94511	Screw (Fuel Tank)	601	93053	Clamp-Hose			Used on Type No(s). 0651, 0660, 0671.
240	298090	Fuel Filter	670	280512	Spacer-Fuel Tank	1059	398540	Screw/Washer Kit
			957	397974	Fuel Tank Cap (Plastic)			

★ Included in Gasket Set—See Ref. No. 358.
● Included in Carburetor Kit—See Ref. 121.

◆ Included in Carburetor Gasket Set—See Ref. 977.
◊ Included in Valve Overhaul Gasket Set—See Ref. No. 1095.

12T700 to 12T799

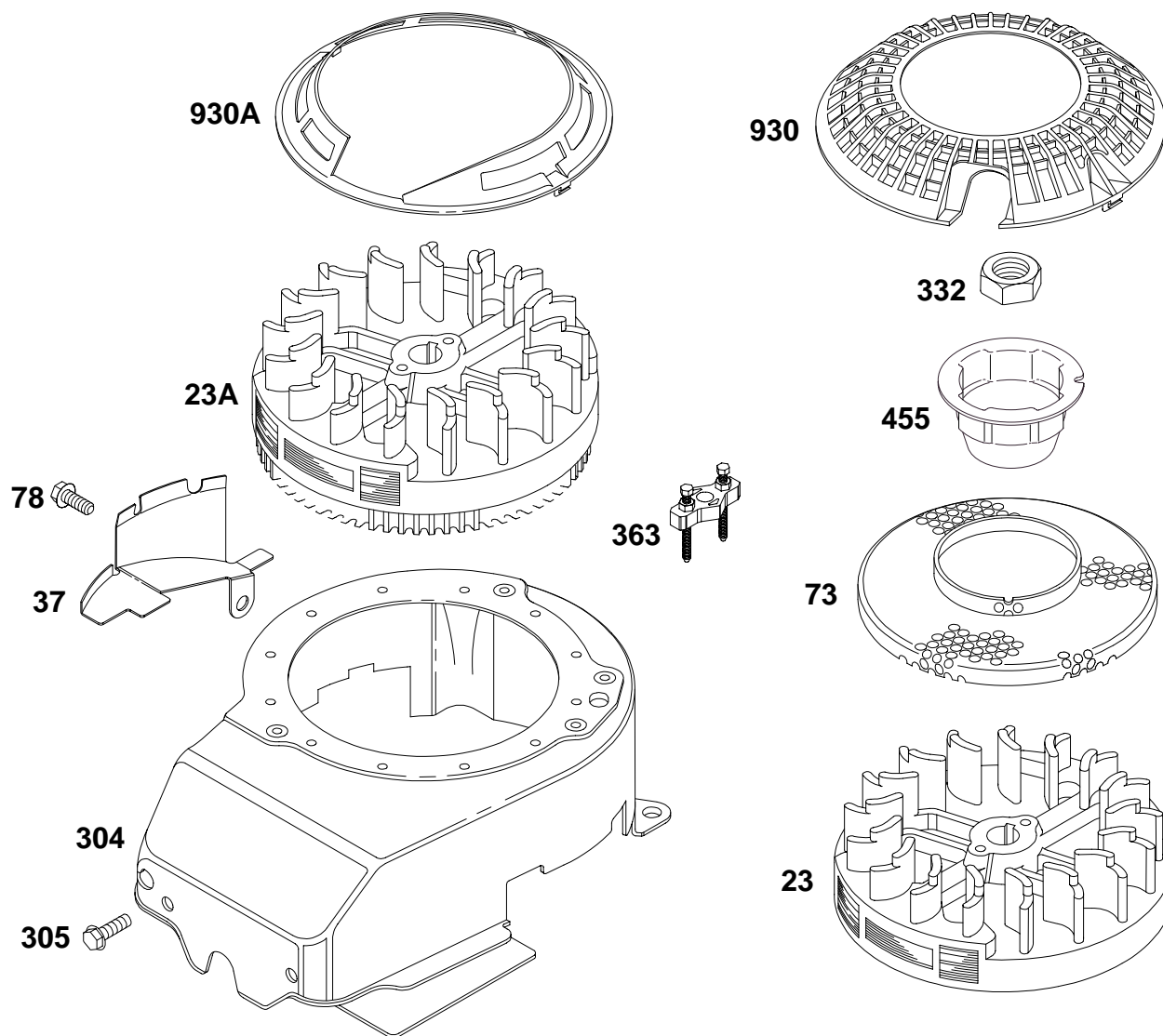


REF. NO.	PART NO.	DESCRIPTION	REF. NO.	PART NO.	DESCRIPTION	REF. NO.	PART NO.	DESCRIPTION
81	223664	Muffler Screw Lock	445	491588	Filter–Air Cleaner Cartridge	970	94749	Screw (Air Cleaner Primer Bracket)
159	224815	Air Cleaner Primer Bracket	529	281299	Grommet	976	694395	Carburetor Primer (Used After Code Date 99103100).
163★◆	272653	Air Cleaner Gasket	613	94231	Screw (Exhaust Muffler)	Note 496115 Carburetor Primer (Used Before Code Date 99110100).		
300	496106	Muffler–Exhaust	832	499034	Muffler Guard			
346	94896	Screw (Spark Arrester)	836	94874	Screw (Muffler Guard)	994	398067	Arrester–Spark
423	94873	Screw (Air Cleaner Primer Base)	966	496116	A/C Primer Base			
425	94872	Screw (Air Cleaner Cover)	968	281340	Cover–Air Cleaner			

★ Included in Gasket Set–See Ref. No. 358.
 ● Included in Carburetor Kit–See Ref. 121.

◆ Included in Carburetor Gasket Set–See Ref. 977.
 ◊ Included in Valve Overhaul Gasket Set–See Ref. No. 1095.

12T700 to 12T799



REF. NO.	PART NO.	DESCRIPTION	REF. NO.	PART NO.	DESCRIPTION	REF. NO.	PART NO.	DESCRIPTION
23	492177	Flywheel Note — 492893 Flywheel Used on Type No(s). 0660.	78	94786	Screw (Flywheel Guard)	305	691108	Screw (Blower Housing)
23A	492175	Flywheel	304	493293	Housing-Blower Note — 493294 Housing- Blower Used on Type No(s). 0651, 0660.	332	94877	Nut (Flywheel)
37	224511	Flywheel Guard				363	19069	Flywheel Puller
73	691221	Rotating Screen Used on Type No(s). 0672, 0674, 0675.				455	691219	Cup-Flywheel
						930	281136	Guard-Rewind
						930A	690598	Guard-Rewind

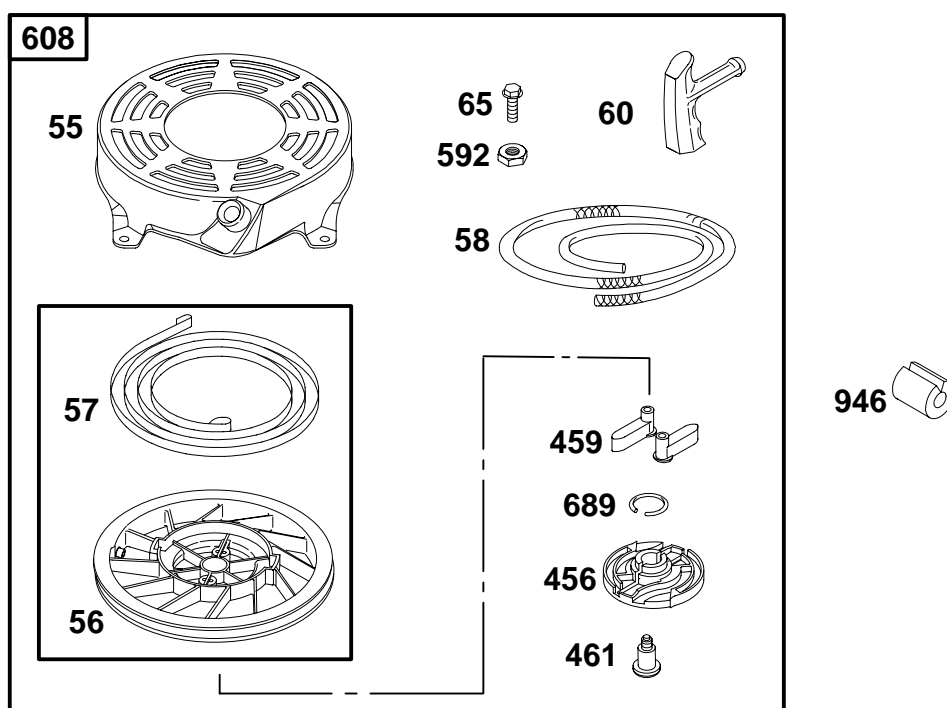
★ Included in Gasket Set—See Ref. No. 358.

● Included in Carburetor Kit—See Ref. 121.

◆ Included in Carburetor Gasket Set—See Ref. 977.

◊ Included in Valve Overhaul Gasket Set—See Ref. No. 1095.

12T700 to 12T799

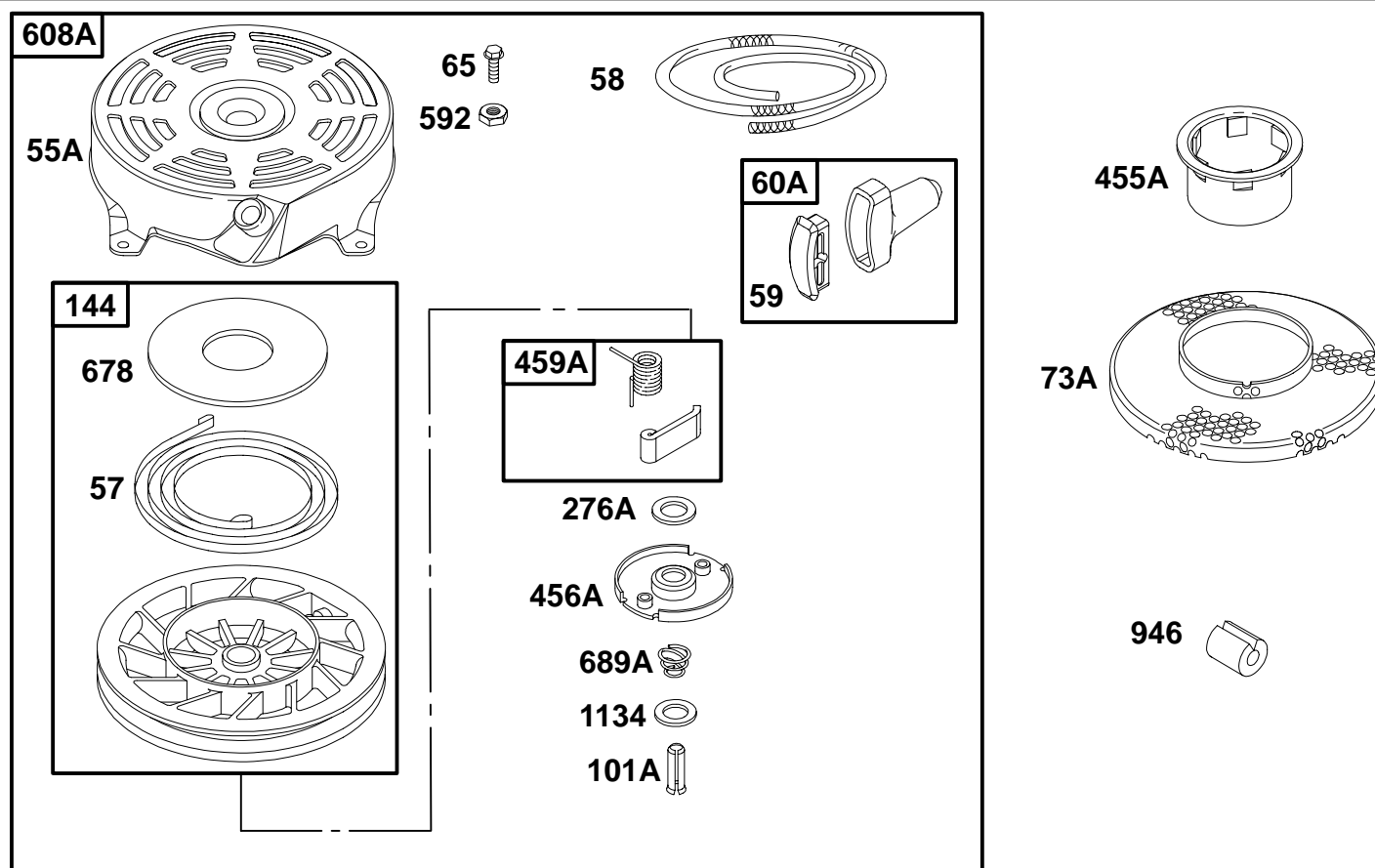


REF. NO.	PART NO.	DESCRIPTION	REF. NO.	PART NO.	DESCRIPTION	REF. NO.	PART NO.	DESCRIPTION
55	691421	Rewind Starter Housing	58	280399	Starter Rope (Cut to Required Length)	461	94943	Screw (Pawl Friction Plate)
56	498144	Pulley/Spring Assembly	60	281434	Starter Rope Grip	592	94908	Nut (Rewind Starter)
57	498144	Pulley/Spring Assembly	65	94686	Screw (Rewind Starter)	608	497680	Starter-Rewind
			456	281503	Plate-Pawl Friction	689	263073	Friction Spring
			459	281505	Pawl-Ratchet	946	223294	Rope Stop

★ Included in Gasket Set—See Ref. No. 358.
● Included in Carburetor Kit—See Ref. 121.

◆ Included in Carburetor Gasket Set—See Ref. 977.
Ø Included in Valve Overhaul Gasket Set—See Ref. No. 1095.

12T700 to 12T799

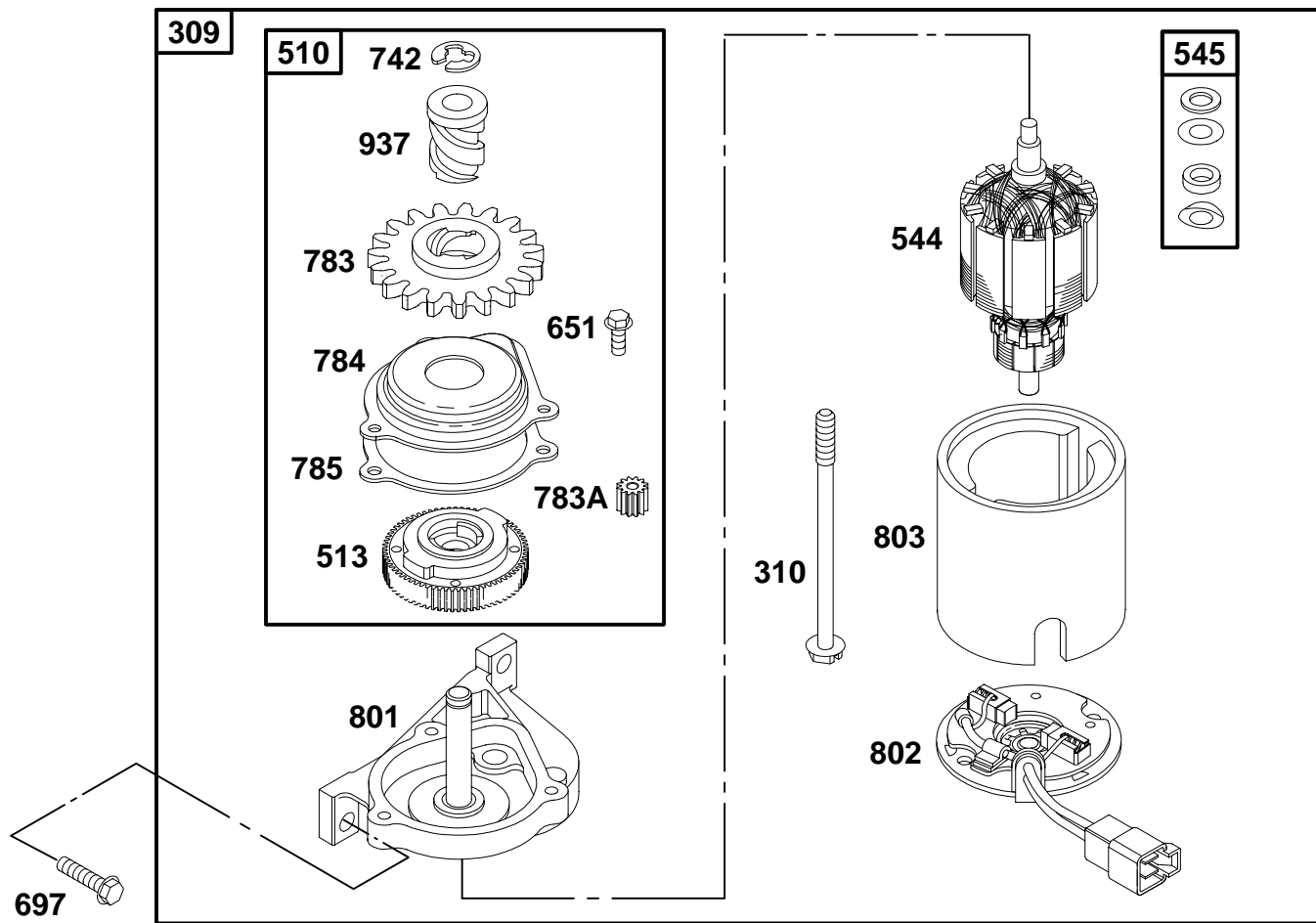


REF. NO.	PART NO.	DESCRIPTION	REF. NO.	PART NO.	DESCRIPTION	REF. NO.	PART NO.	DESCRIPTION
55A	492831	Rewind Starter Housing	73A	224251	Screen-Rotating Used on Type No(s). 0672, 0674, 0675.	608A	497598	Starter-Rewind Include(s): 691219 Cup-Flywheel
57	491889	Rewind Starter Spring	101A	262626	Shaft Pin	678	224278	Rewind Spacer
58	280399	Starter Rope (Cut to Required Length)	144	493824	Starter Pulley	689A	262625	Friction Spring
59	396892	Grip Insert	276A	280973	Sealing Washer	946	223294	Rope Stop
60A	393152	Starter Rope Grip	455A	224250	Cup-Flywheel	1134	224322	Washer (Pawl Friction Plate)
65	94686	Screw (Rewind Starter)	456A	224321	Pawl Friction Plate			
			459A	492833	Pawl-Ratchet			
			592	94908	Nut (Rewind Starter)			

★ Included in Gasket Set-See Ref. No. 358.
● Included in Carburetor Kit-See Ref. 121.

◆ Included in Carburetor Gasket Set-See Ref. 977.
◊ Included in Valve Overhaul Gasket Set-See Ref. No. 1095.

12T700 to 12T799

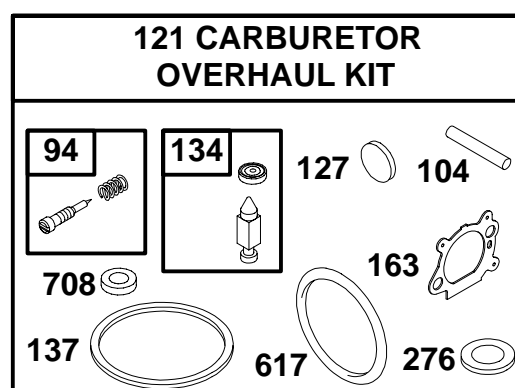
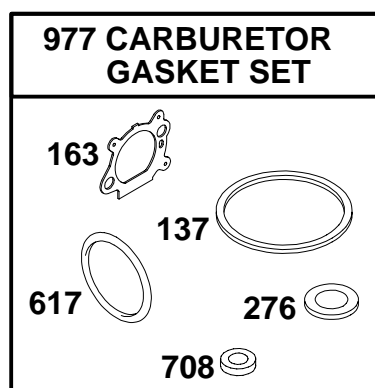
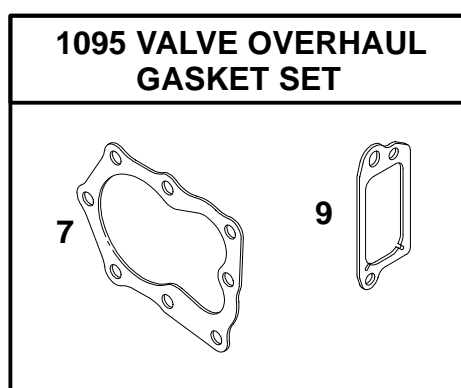
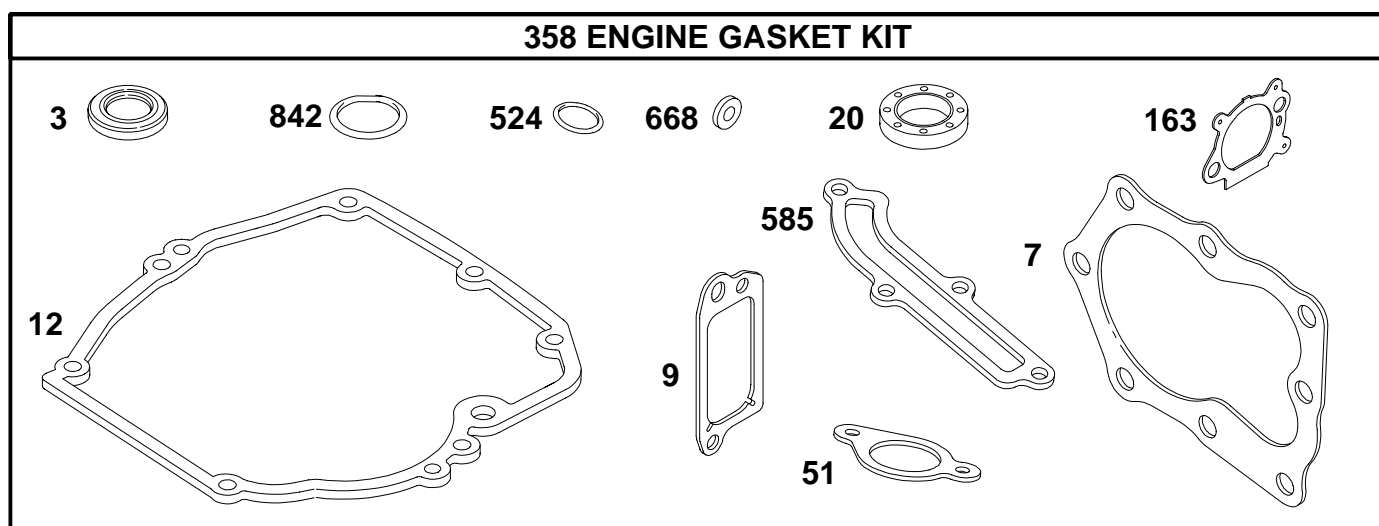


REF. NO.	PART NO.	DESCRIPTION	REF. NO.	PART NO.	DESCRIPTION	REF. NO.	PART NO.	DESCRIPTION
309	691376	Motor-Starter	651	690345	Screw (Starter Gear Cover)	784	692341	Cover-Gear
310	692327	Bolt (Starter Motor)	697	691127	Screw (Drive Cap)	785	692352	Starter Cover Gasket
510	494147	Drive-Starter	742	93941	E-Ring Retainer	801	690782	Drive Cap
513	692358	Clutch-Drive	783	281127	Gear-Pinion	802	690787	End Cap
544	690786	Armature-Starter	783A	691269	Gear-Pinion	803	690785	Housing-Starter
545	492919	Shim Set				937	691325	Spline-Starter

★ Included in Gasket Set-See Ref. No. 358.
● Included in Carburetor Kit-See Ref. 121.

◆ Included in Carburetor Gasket Set-See Ref. 977.
◊ Included in Valve Overhaul Gasket Set-See Ref. No. 1095.

12T700 to 12T799



REF. NO.	PART NO.	DESCRIPTION	REF. NO.	PART NO.	DESCRIPTION	REF. NO.	PART NO.	DESCRIPTION
3	★299819	Oil Seal (Magneto Side)	127	•	Welch Plug (Sold in Kit Only)	617	◆◆270344	O-Ring Seal (Intake Manifold)
7	★272916	Cylinder Head Gasket	134	◆398188	Needle/Seat Kit	668	★493823	Spacer (Includes 2)
9	★272481	Breather Gasket	137	◆◆	Float Bowl Gasket (Sold in Kit Only)	708	◆◆691321	Seal-Dust
12	★272198	Crankcase Gasket	163	◆◆272653	Air Cleaner Gasket	842	★280393	Dipstick/Tube Seal
20	★399781	Oil Seal (PTO Side)	276	◆◆691242	Sealing Washer (Sold in Kit Only)	977	498261	Gasket Set—Carburetor
51	★272199	Intake Gasket	358	497316	Engine Gasket Set	1095	498528	Valve Overhaul Gasket Set
94	◆493765	Idle Mixture Kit	524	★280966	Dipstick/Tube Seal			
104	◆691242	Float Hinge Pin	585	★272238	Breather Passage Gasket			
121	498260	Carburetor Overhaul Kit						

★ Included in Gasket Set—See Ref. No. 358.
 • Included in Carburetor Kit—See Ref. 121.

◆ Included in Carburetor Gasket Set—See Ref. 977.
 ◊ Included in Valve Overhaul Gasket Set—See Ref. No. 1095.