

**12G800 to 12G899**

# **Illustrated Parts List**

## **Model Series**

### **12G800 to 12G899**

TYPE NUMBERS  
0600, 0808, 0809,  
0813 through 0832,  
0835, 0836, 0840,  
0847, 0854, 0907,  
0915, 1108, 1119,  
1122, 1140, 1142,  
1508, 1509, 1572,

TYPE NUMBERS  
1700, 1908, 1909,  
1919, 1928, 1930,  
1935, 1936, 1942,  
1947, 1948, 2007,  
2015, 2308, 2322,  
2324, 2325, 2342,  
2343, 2608, 3105,  
4907.

#### **TO FIND**

#### **THE CORRECT NUMBER OF THE PART YOU NEED:**

#### **FOLLOW THE INSTRUCTIONS BELOW**

- A. Refer to Engine Model, Type and Code Number that is stamped on the blower housing of engine. Engine type numbers such as 0123 01 are listed only as 0123 in most instances. The two digits (01 or 02, etc.) to the right of the space may be required for more accurate parts identification in some instances. Select the Illustrated Parts List covering the correct Model Series and Type Number.
- B. Refer to the Illustrations and compare the original part with Illustration. The number next to the illustration is the Reference Number. Assemblies include all parts shown in frames. All parts shown in assembly frames having individual reference numbers can be purchased separately.
- C. After the Reference Number has been identified, refer to the Numerical text, where Reference and Primary Part Number are listed. **THE PRIMARY PART IS USED ON ALL TYPE NUMBERS EXCEPT THOSE TYPE NUMBERS UNDER "NOTE."**
- D. If a "Note" appears below the Primary Part Number, it means that this part differs from the Primary Part for certain types. If your Type number is listed under "Note," order the part referred to at the "Note."
- E. If your Engine Type Number does not appear after any part number listed under "Note," use the Primary Part Number.
- F. For Engine Type Numbers not covered by this book, check other Parts Lists having the same engine model or contact your source of supply.

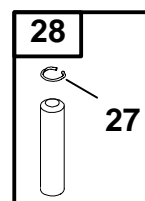
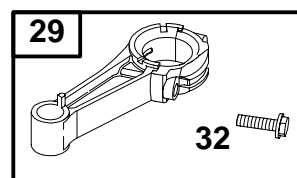
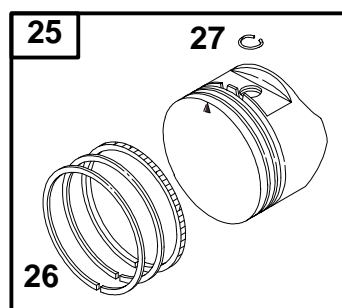
PRINTED IN U.S.A.



COPYRIGHT by BRIGGS & STRATTON CORPORATION  
All rights reserved. No part of this material may be reproduced or transmitted, in any form or by any means, electronic or mechanical, including photocopying, recording or by any information storage and retrieval system, without permission in writing from Briggs & Stratton Corporation.



## 12G800 to 12G899



REF. NO.	PART NO.	DESCRIPTION	REF. NO.	PART NO.	DESCRIPTION	REF. NO.	PART NO.	DESCRIPTION
25	499433	Piston Assembly (Standard) (Used After Code Date 97011200). ———— <b>Note</b> ———— <b>494058</b> Piston Assy. (Standard) (Used Before Code Date 97011300). <b>499434</b> Piston Assy. (.010 O.S.) (Used After Code Date 97011200). <b>494059</b> Piston Assy. (.010 O.S.) (Used Before Code Date 97011300). <b>499435</b> Piston Assy. (.020 O.S.) (Used After Code Date 97011200). <b>494060</b> Piston Assy. (.020 O.S.) (Used Before Code Date 97011300). <b>499436</b> Piston Assy. (.030 O.S.) (Used After Code Date 97011200). <b>494061</b> Piston Assy. (.030 O.S.) (Used Before Code Date 97011300).	26	499425	Ring Set (Standard) (Used After Code Date 97011200). ———— <b>Note</b> ———— <b>493261</b> Ring Set (Standard) (Used Before Code Date 97011300). <b>499426</b> Ring Set (.010 O.S.) (Used After Code Date 97011200). <b>493388</b> Ring Set (.010 O.S.) (Used Before Code Date 97011300). <b>499427</b> Ring Set (.020 O.S.) (Used After Code Date 97011200). <b>493389</b> Ring Set (.020 O.S.) (Used Before Code Date 97011300). <b>499428</b> Ring Set (.030 O.S.) (Used After Code Date 97011200). <b>493390</b> Ring Set (.030 O.S.) (Used Before Code Date 97011300).	27	263190	Piston Pin Lock (Used After Code Date 97011200). ———— <b>Note</b> ———— <b>26026</b> Piston Pin Lock (Used Before Code Date 97011300). 28 499423 Piston Pin (Standard) (Used After Code Date 97011200). ———— <b>Note</b> ———— <b>298909</b> Piston Pin (Standard) (Used Before Code Date 97011300). <b>298908</b> Piston Pin (.005 O.S.) (Used Before Code Date 97011300). 29 499424 Connecting Rod (Standard) (Used After Code Date 97011200). ———— <b>Note</b> ———— <b>490566</b> Connecting Rod (Standard) (Used Before Code Date 97011300). <b>490743</b> Connecting Rod (.020 Undersize) (Used Before Code Date 97011300). 32 94699 Screw (Connecting Rod)

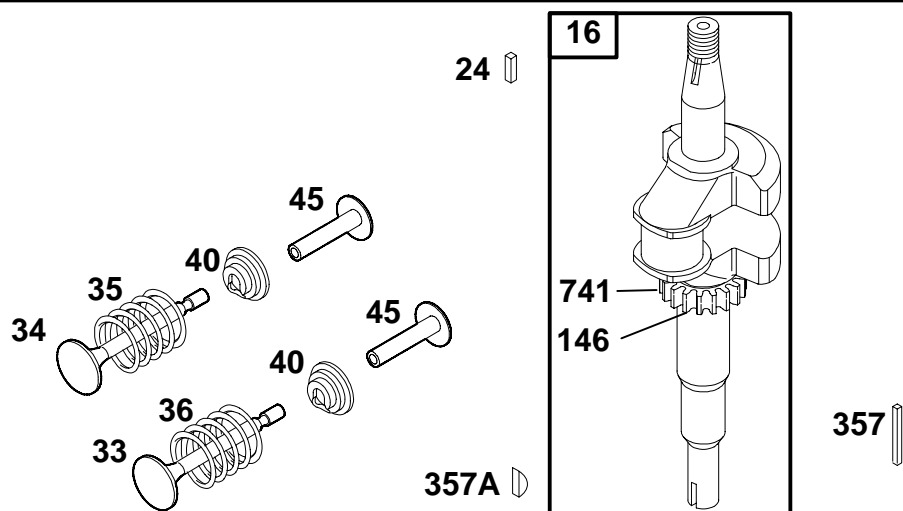
★ Included in Engine Overhaul Gasket Set—See Ref. No. 358.

● Included in Carburetor Overhaul Kit—See Ref. No.121.

◆ Included in Carburetor Gasket Set—See Ref. No. 977.

◊ Included in Valve Overhaul Gasket Set—See Ref. No. 1095.

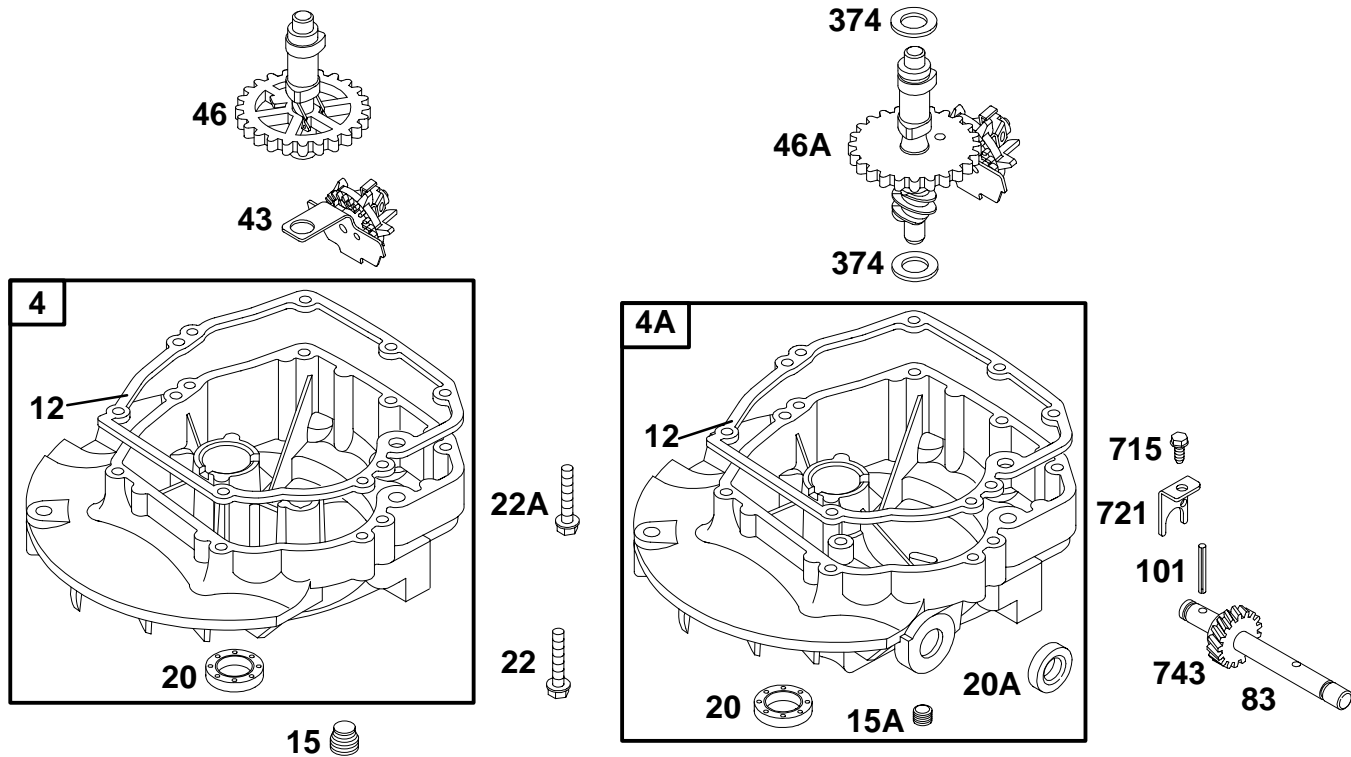
# 12G800 to 12G899



REF. NO.	PART NO.	DESCRIPTION	REF. NO.	PART NO.	DESCRIPTION	REF. NO.	PART NO.	DESCRIPTION
16	691451	Crankshaft (Used After Code Date 97011200), ———— <b>Note</b> ———— <b>493362</b> Crankshaft (Used Before Code Date 97011300). <b>691450</b> Crankshaft (Used After Code Date 97011200), Used on Type No(s). 0600, 0808, 0819, 1108, 1508, 1700, 1908,1919, 2308, 2608. <b>493282</b> Crankshaft (Used Before Code Date 97011300). Used on Type No(s). 0600, 0808, 0819, 1108, 1508, 1919. ————— <b>691452</b> Crankshaft (Used After Code Date 97011200), Used on Type No(s). 0823, 0824, 0831, 1119, 1140, 1509.			<b>493363</b> Crankshaft (Used Before Code Date 97011300). Used on Type No(s). 0823, 0824, 0831, 1119, 1140, 1509. ————— <b>692978</b> Crankshaft (Used After Code Date 97011200), Used on Type No(s). 0847, 1947. <b>690793</b> Crankshaft (Used Before Code Date 97011300). ————— <b>691455</b> Crankshaft (Used After Code Date 97011200), Used on Type No(s). 0814, 1930. <b>691375</b> Crankshaft (Used Before Code Date 97011300). Used on Type No(s). 0814, 1930.		<b>24</b> <b>33</b> <b>34</b> <b>35</b>  <b>36</b>  <b>40</b> <b>45</b> <b>146</b> <b>357</b> <b>357A</b> <b>741</b> <b>222698</b> <b>262651</b> <b>262652</b> <b>691270</b>  <b>691270</b>  <b>93312</b> <b>690548</b> <b>94388</b> <b>91539</b> <b>94329</b> <b>262598</b> Flywheel Key Exhaust Valve Intake Valve Valve Spring (Intake) Valve Spring (Exhaust) Valve Retainer Valve Tappet Timing Key Drive Pulley Key Drive Pulley Key Timing Gear	

★ Included in Engine Overhaul Gasket Set—See Ref. No. 358.  
● Included in Carburetor Overhaul Kit—See Ref. No. 121.

◆ Included in Carburetor Gasket Set—See Ref. No. 977.  
◊ Included in Valve Overhaul Gasket Set—See Ref. No. 1095.



REF. NO.	PART NO.	DESCRIPTION	REF. NO.	PART NO.	DESCRIPTION	REF. NO.	PART NO.	DESCRIPTION
<b>4</b>	<b>493279</b>	Engine Sump	<b>43</b>	<b>493737</b>	Governor/Oil Slinger	<b>83</b>	<b>690521</b>	Auxiliary Drive Shaft
<b>4A</b>	<b>493365</b>	Engine Sump	<b>46</b>	<b>691449</b>	Camshaft			———— <b>Note</b> ———
<b>12</b>	<b>★272198</b>	Crankcase Gasket			(Used After Code Date			<b>690522</b> Auxiliary Drive
<b>15</b>	<b>94880</b>	Oil Drain Plug			96060200).			Shaft
<b>15A</b>	<b>691093</b>	Oil Drain Plug			———— <b>Note</b> ———			Used on Type No(s).
<b>20</b>	<b>★399781</b>	Oil Seal			<b>492830</b> Camshaft			0824, 0825.
		(PTO Side)			(Used Before Code			<b>231671</b> Auxiliary Drive
<b>20A</b>	<b>391484</b>	Oil Seal			Date 96060300).			Shaft
		(PTO Side)	<b>46A</b>	<b>498629</b>	Camshaft			Used on Type No(s).
<b>22</b>	<b>691092</b>	Screw			(Used After Code Date			0836, 1936.
		(Crankcase Cover/			96060200).	<b>101</b>	<b>93474</b>	Shaft Pin
		Sump)			———— <b>Note</b> ———	<b>374</b>	<b>691074</b>	Washer
<b>22A</b>	<b>94612</b>	Screw			<b>493740</b> Camshaft			(Camshaft)
		(Crankcase Cover/			(Used Before Code	<b>715</b>	<b>94929</b>	Screw
		Sump)			Date 96060300).			(Stop Shaft)
		(One Used in Hole				<b>721</b>	<b>690449</b>	Shaft Stop
		Nearest Breather)				<b>743</b>	<b>690516</b>	Drive Gear

★ Included in Engine Overhaul Gasket Set—See Ref. No. 358.  
● Included in Carburetor Overhaul Kit—See Ref. No.121.

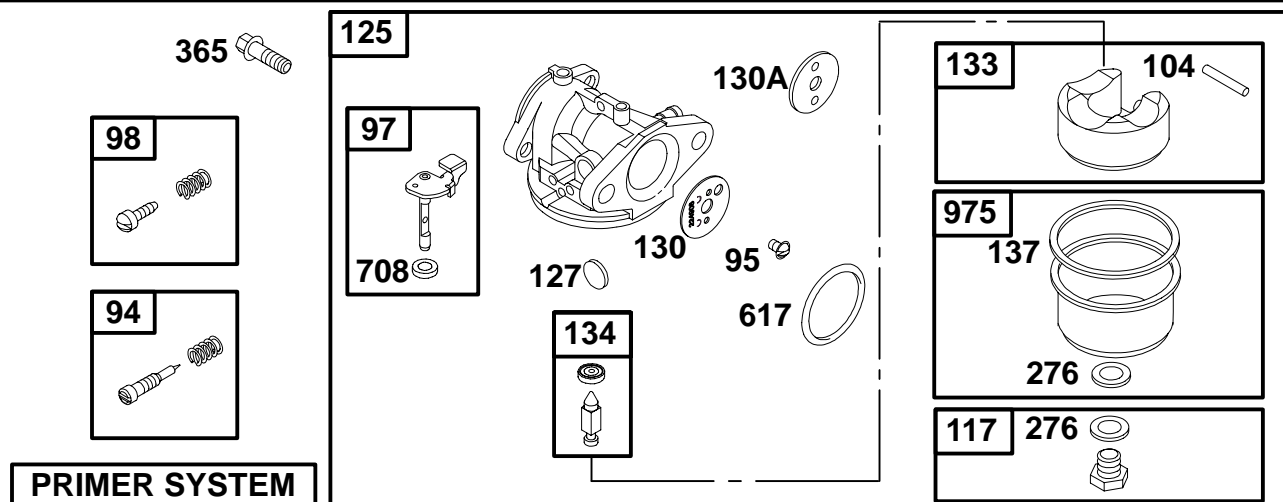
◆ Included in Carburetor Gasket Set—See Ref. No. 977.  
 Ø Included in Valve Overhaul Gasket Set—See Ref. No. 1095.

**0476-5**

**Assemblies include all parts shown in frames.**

69

# 12G800 to 12G899



REF. NO.	PART NO.	DESCRIPTION	REF. NO.	PART NO.	DESCRIPTION	REF. NO.	PART NO.	DESCRIPTION
94	●493765	Idle Mixture Kit (Used Before Code Date 94070400). Used on Type No(s). 0823, 0907, 0915, 1119.						<b>Note</b>
95	94098	Screw (Throttle Valve)			<b>493637</b> Main Jet (Standard) (Used Before Code Date 94070400). Used on Type No(s). 0823, 0907, 0915, 1119.			<b>498255</b> Carburetor (Used After Code Date 95102900 and Before Code Date 96060300).
97	493267	Throttle Shaft			<b>496495</b> Main Jet (High Altitude) (Used After Code Date 96060200).			<b>498254</b> Carburetor (Used After Code Date 95102900 and Before Code Date 96060300). Used on Type No(s). 1508, 1509.
98	398185	Idle Speed Kit (Used Before Code Date 94070400). Used on Type No(s). 0823, 0907, 0915, 1119.			<b>497348</b> Main Jet (High Altitude) (Used After Code Date 95102900 and Before Code Date 96060300).			<b>497586</b> Carburetor (Used After Code Date 94070300 and Before Code Date 95103000).
104	●691242	Float Hinge Pin			<b>496495</b> Main Jet (High Altitude) (Used After Code Date 94070300 and Before Code Date 95103000).			<b>496114</b> Carburetor (Used Before Code Date 94070400). Used on Type No(s). 0823, 0907, 0915, 1119.
117	498975	Main Jet (Standard) (Used After Code Date 96060200).			<b>496495</b> Main Jet (High Altitude) (Used After Code Date 94070300 and Before Code Date 95103000).			
		<b>Note</b>			<b>496495</b> Main Jet (High Altitude) (Used After Code Date 95102900 and Before Code Date 96060300). Used on Type No(s). 1508, 1509.	127	●	Welch Plug (Sold in Kit Only)
		<b>497315</b> Main Jet (Standard) (Used After Code Date 95102900 and Before Code Date 96060300).			<b>496063</b> Main Jet (High Altitude) (Used Before Code Date 94070400). Used on Type No(s). 0823, 0907, 0915, 1119.	130	691203	Throttle Valve
		<b>497466</b> Main Jet (Standard) (Used After Code Date 94070300 and Before Code Date 95103000).				130A	691181	Throttle Valve
		<b>497466</b> Main Jet (Standard) (Used After Code Date 95102900 and Before Code Date 96060300). Used on Type No(s). 1508, 1509.				133	398187	Carburetor Float
						134	●398188	Needle/Seat Kit
						137	◆◆	Float Bowl Gasket
						276	◆◆	Sealing Washer (Sold in Kit Only)
						365	94840	Screw (Carburetor)
						617	◆◆270344	O-Ring Seal (Intake Manifold)
						708	◆◆691321	Dust Seal (Throttle Shaft)
						975	493640	Float Bowl
			125	498966	Carburetor (Used After Code Date 96060200).			

★ Included in Engine Overhaul Gasket Set—See Ref. No. 358.

● Included in Carburetor Overhaul Kit—See Ref. No. 121.

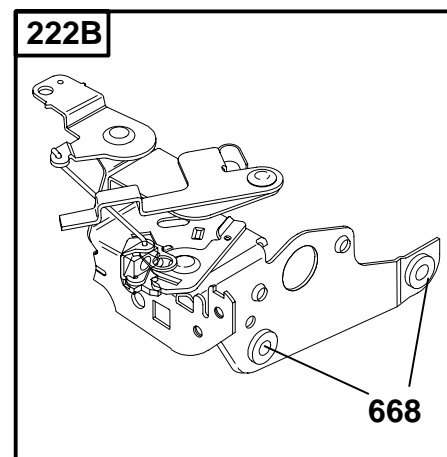
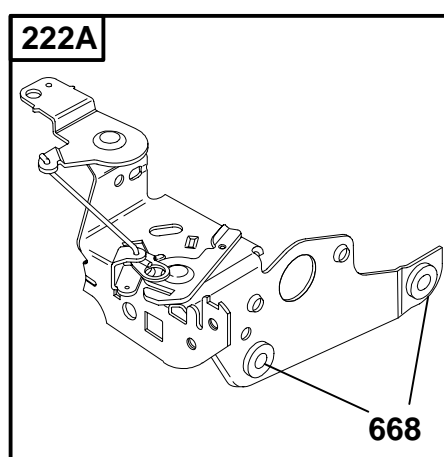
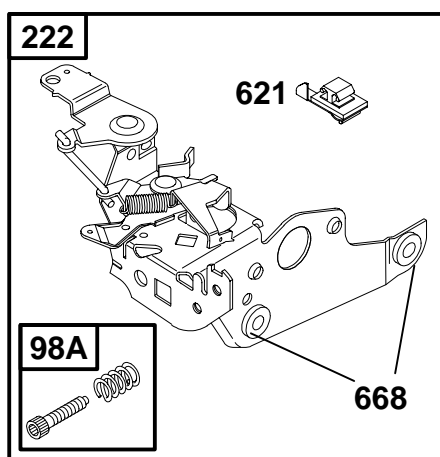
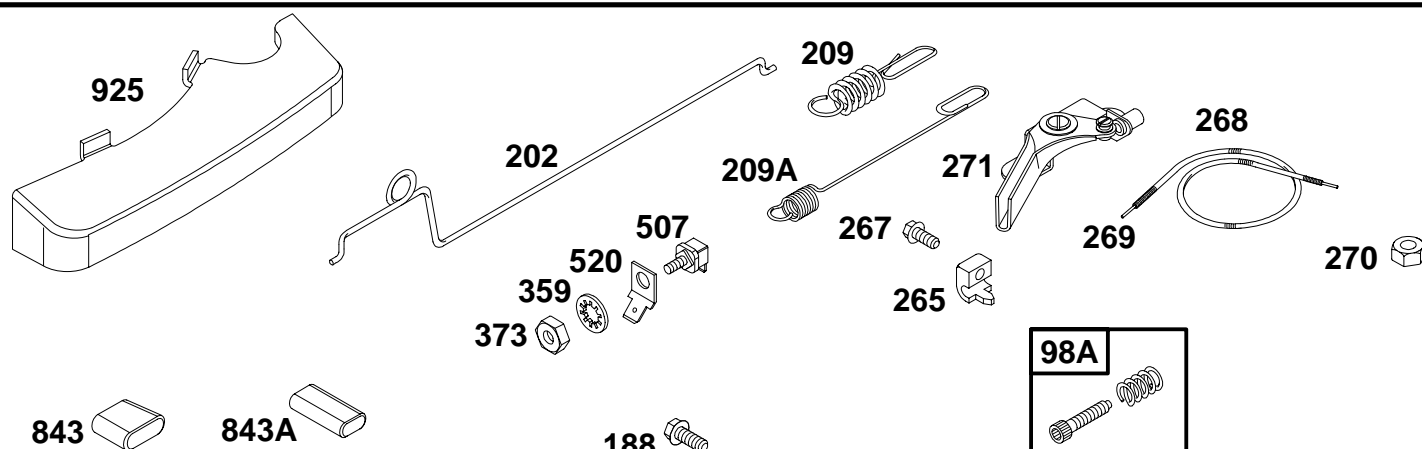
◆ Included in Carburetor Gasket Set—See Ref. No. 977.

⊙ Included in Valve Overhaul Gasket Set—See Ref. No. 1095.



◆ Included in Carburetor Gasket Set—See Ref. No. 977.  
 Ø Included in Valve Overhaul Gasket Set—See Ref. No. 1095.

# 12G800 to 12G899



REF. NO.	PART NO.	DESCRIPTION	REF. NO.	PART NO.	DESCRIPTION	REF. NO.	PART NO.	DESCRIPTION
98A	493280	Idle Speed Kit		263042	Gov. Spring.	268	691072	Casing Control Wire
188	94644	Screw			Used on Type No(s).			(Cut to Required
		(Control Bracket)			0819, 0847, 1919,			Length)
202	262579	Mechanical Governor			1928, 3105.	269	26099	Control Wire
		Link		691292	Gov. Spring			(Cut to Required
209	262661	Governor Spring			Used on Type No(s).			Length)
		————— <b>Note</b> —————			0809, 0813, 0814,	270	63426	Locknut
		691275 Gov. Spring			1108, 1508.			(Control Wire Casing)
		Used on Type No(s).			691290 Gov. Spring	271	290568	Control Lever
		0840.			Used on Type No(s).	359	691077	Washer
		262664 Gov. Spring			1930.			(Ground Terminal)
		Used on Type No(s).	222	495975	Control Bracket	373	90576	Nut
		0828			<b>Used with Choke</b>			(Ground Terminal)
209A	263044	Governor Spring			<b>Type Carburetor</b>	507	398525	Insulator
		————— <b>Note</b> —————	222A	497203	Control Bracket	520	691084	Ground Terminal
		691291 Gov. Spring			<b>Used with Primer</b>	621	396847	Stop Switch
		Used on Type No(s).			<b>Type Carburetor</b>	668	★493823	Spacer
		0907, 2007, 2343,	222B	692150	Control Bracket			(Includes 2)
		4907.	265	213146	Casing Clamp	843	272616	Lever Sleeve
		263041 Gov. Spring	267	94882	Screw	843A	280149	Lever Sleeve
		Used on Type No(s).			(Casing Clamp)			Used on Type No(s).
		1119, 1509.						2343.
						925	690595	Linkage Cover

★ Included in Engine Overhaul Gasket Set—See Ref. No. 358.

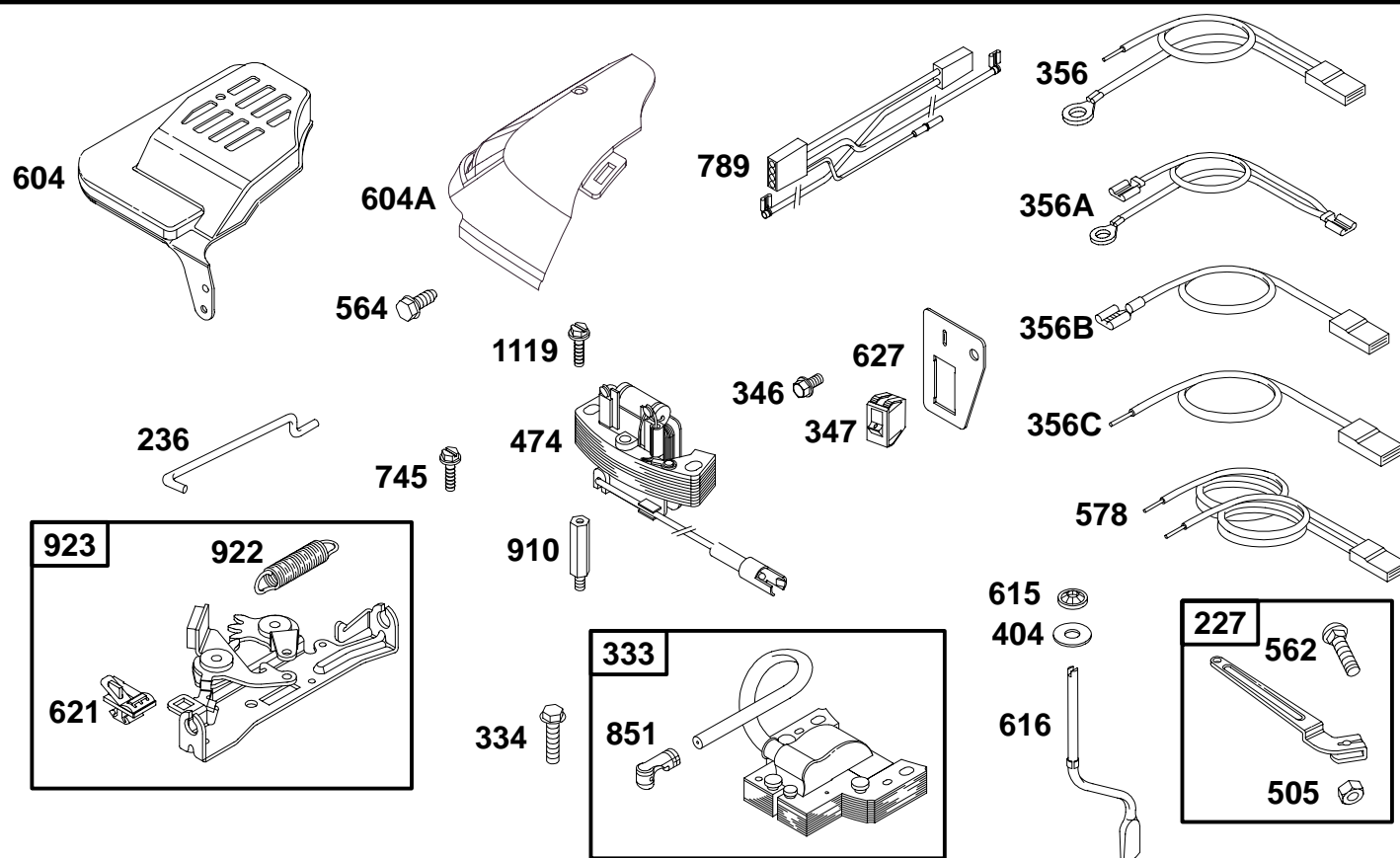
● Included in Carburetor Overhaul Kit—See Ref. No.121.

◆ Included in Carburetor Gasket Set—See Ref. No. 977.

◊ Included in Valve Overhaul Gasket Set—See Ref. No. 1095.



# 12G800 to 12G899

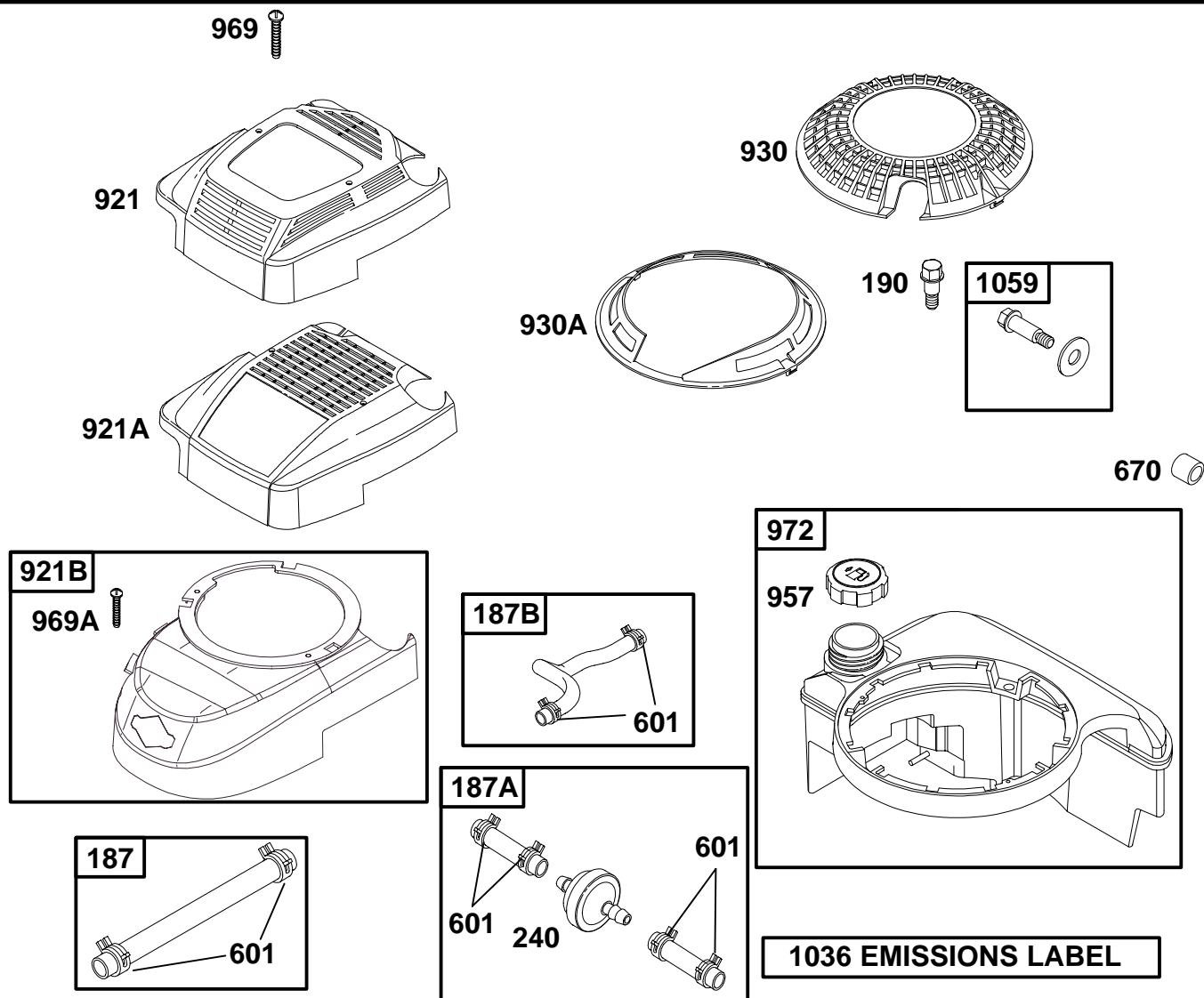


REF. NO.	PART NO.	DESCRIPTION	REF. NO.	PART NO.	DESCRIPTION	REF. NO.	PART NO.	DESCRIPTION
227	690783	Governor Control Lever	404	690272	Washer (Governor Crank)	615	690340	Governor Shaft Retainer
236	262461	Lock Out Link	474	492841	Alternator	616	691306	Governor Crank
333	802574	Magneto Armature	505	231082	Nut (Governor Control Lever)	621	396847	Stop Switch
334	94731	Screw (Magneto Armature)	562	92613	Bolt (Governor Control Lever)	627	692872	Stop Switch Bracket
346	94874	Screw (Stop Switch Bracket)	564	93801	Screw (Control Cover)	745	94512	Screw (Brake)
347	691396	Switch-Rocker	578	398153	Wire Assembly	789	691372	Wiring Harness
356	398808	Stop Wire	604	225103	Control Cover	851	493880	Spark Plug Terminal
356A	690650	Stop Wire	604A	691344	Control Cover	910	691094	Stud (Alternator)
356B	693010	Stop Wire				922	262640	Brake Spring
356C	692390	Stop Wire				923	493442	Brake
						1119	94512	Screw (Alternator)

★ Included in Engine Overhaul Gasket Set—See Ref. No. 358.  
 ● Included in Carburetor Overhaul Kit—See Ref. No.121.

◆ Included in Carburetor Gasket Set—See Ref. No. 977.  
 ◊ Included in Valve Overhaul Gasket Set—See Ref. No. 1095.

# 12G800 to 12G899

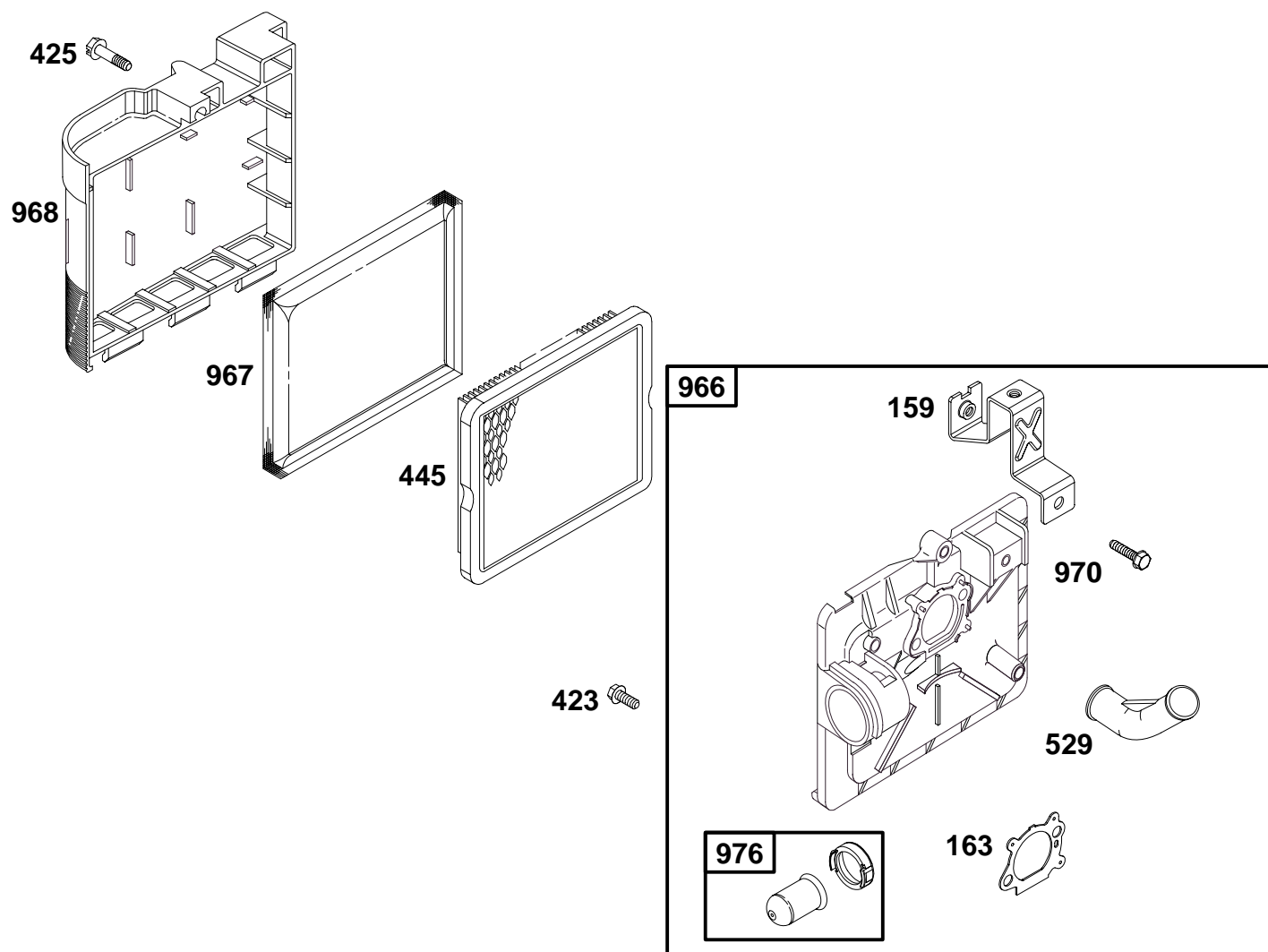


REF. NO.	PART NO.	DESCRIPTION	REF. NO.	PART NO.	DESCRIPTION	REF. NO.	PART NO.	DESCRIPTION
187	492790	Fuel Line (Cut to Required Length)	921	497233	Blower Housing Cover	972	495224	Fuel Tank
187A	498171	Fuel Line	921A	692932	Blower Housing Cover (Red)	1036	694458	Emissions Label (Used After Code Date 98123100).
187B	691371	Fuel Line			<b>Note</b>			<b>Note</b>
190	94511	Screw (Fuel Tank)			692931 Blower Housing Cover (Black)			499341 Emissions Label (Used After Code Date 97052500 and Before Code Date 99010100).
240	298090	Fuel Filter	921B	691468	Blower Housing Cover (Black)			499340 Emissions Label (Used Before Code Date 97052600).
601	93807	Hose Clamp (Black)	957	397974	Fuel Tank Cap	1059	398540	Screw/Washer Kit
		<b>Note</b>	969	94696	Screw (Blower Housing Cover)			
		93053 Hose Clamp (Green)						
670	280512	Fuel Tank Spacer	969A	691138	Screw (Blower Housing Cover)			
930	281136	Rewind Guard						
930A	690598	Rewind Guard						

★ Included in Engine Overhaul Gasket Set—See Ref. No. 358.  
● Included in Carburetor Overhaul Kit—See Ref. No.121.

◆ Included in Carburetor Gasket Set—See Ref. No. 977.  
◊ Included in Valve Overhaul Gasket Set—See Ref. No. 1095.

# 12G800 to 12G899

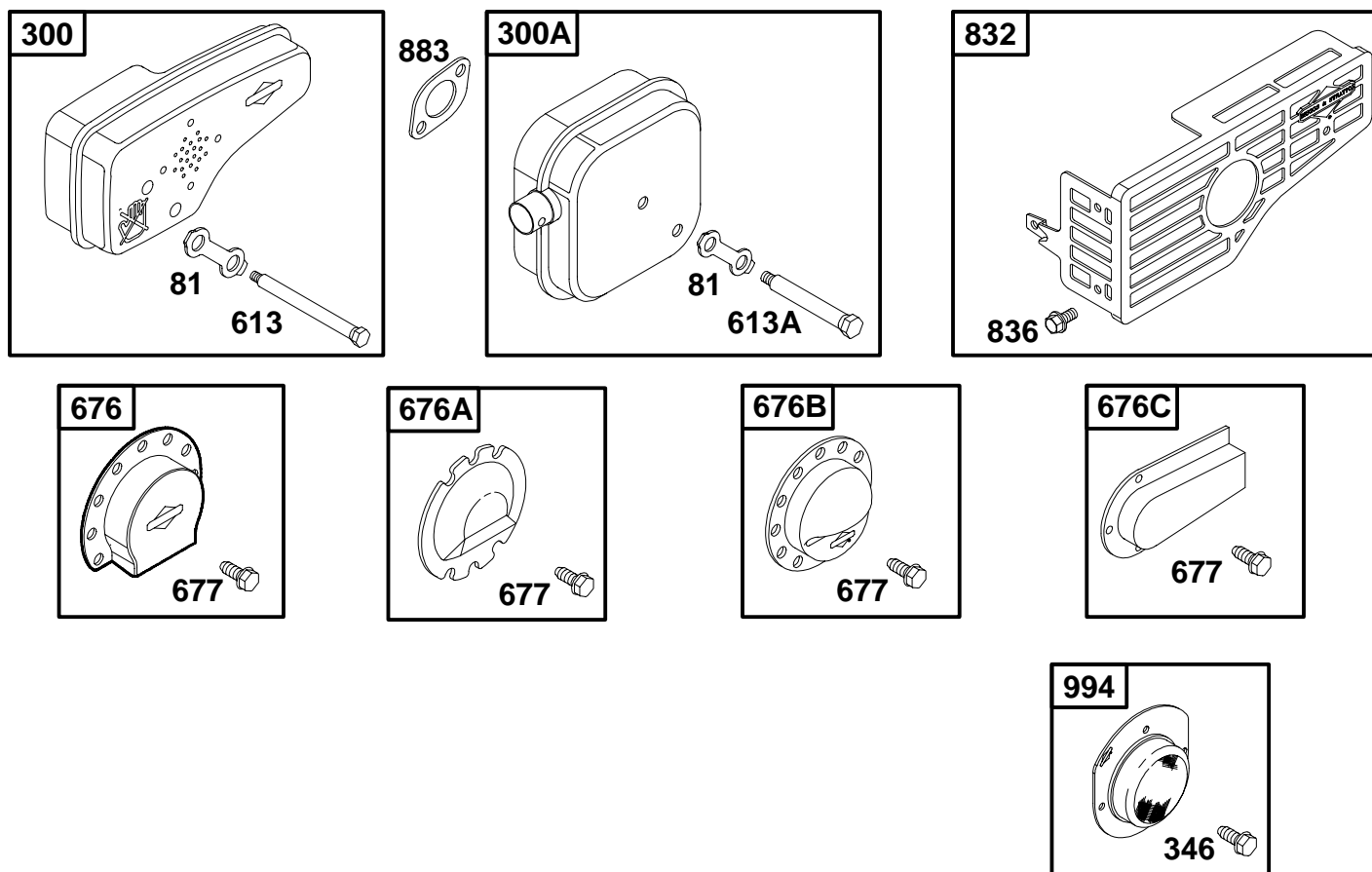


REF. NO.	PART NO.	DESCRIPTION	REF. NO.	PART NO.	DESCRIPTION	REF. NO.	PART NO.	DESCRIPTION
159	224815	A/C Primer Bracket	966	496116	Air Cleaner Primer Base	976	496115	Carburetor Primer (Used After Code Date 99103100).
163★◆	272653	Air Cleaner Gasket	967	493537	Pre-Cleaner Filter	<b>Note</b> 496115 Carburetor Primer (Used Before Code Date 99110100).		
423	94873	Screw (AC Primer Base)	968	281340	Air Cleaner Cover			
425	94872	Screw (Air Cleaner Cover)	970	94749	Screw (A/C Primer Bracket)			
445	491588	A/C Cartridge Filter						
529	281299	Grommet						

★ Included in Engine Overhaul Gasket Set—See Ref. No. 358.  
 ● Included in Carburetor Overhaul Kit—See Ref. No.121.

◆ Included in Carburetor Gasket Set—See Ref. No. 977.  
 Ø Included in Valve Overhaul Gasket Set—See Ref. No. 1095.

# 12G800 to 12G899



REF. NO.	PART NO.	DESCRIPTION	REF. NO.	PART NO.	DESCRIPTION	REF. NO.	PART NO.	DESCRIPTION
81	223664	Muffler Screw Lock	613	94231	Screw (Exhaust Muffler)	677	94896	Screw (Muffler Deflector)
300	496106	Exhaust Muffler	613A	94615	Screw (Exhaust Muffler)	832	499034	Muffler Guard
300A	494343	Exhaust Muffler	676	393760	Muffler Deflector	836	94874	Screw (Muffler Guard)
346	94896	Screw (Spark Arrester)	676A	393756	Muffler Deflector	883 ★	272253	Exhaust Gasket
			676B	396548	Muffler Deflector	994	398067	Spark Arrester
			676C	493871	Muffler Deflector			

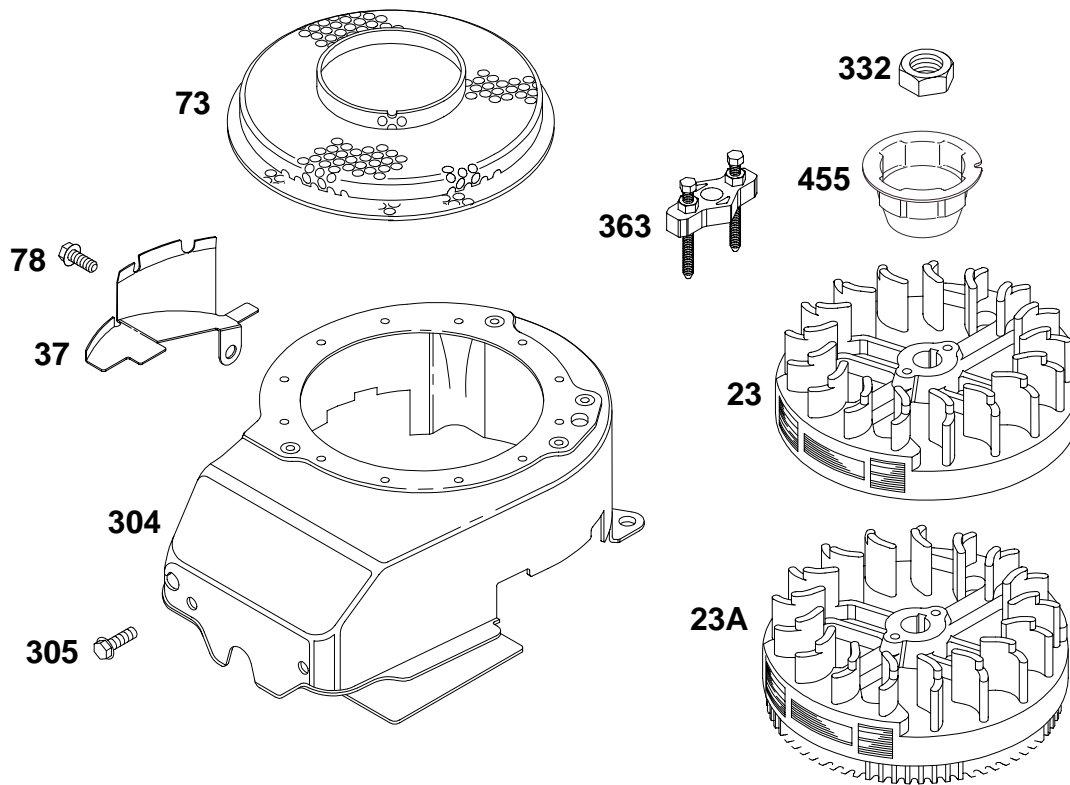
★ Included in Engine Overhaul Gasket Set—See Ref. No. 358.

● Included in Carburetor Overhaul Kit—See Ref. No.121.

◆ Included in Carburetor Gasket Set—See Ref. No. 977.

∅ Included in Valve Overhaul Gasket Set—See Ref. No. 1095.

## 12G800 to 12G899



REF. NO.	PART NO.	DESCRIPTION	REF. NO.	PART NO.	DESCRIPTION	REF. NO.	PART NO.	DESCRIPTION
23	492177	Flywheel	78	691108	Screw (Flywheel Guard)	305	691108	Screw (Blower Housing)
23A	492893	Flywheel	304	493294	Blower Housing (Used on Engines without Band Brake)	332	94877	Nut (Flywheel)
		<b>Note</b>			<b>Note</b>	363	19069	Flywheel Puller
		492175 Flywheel Used on Type No(s). 2324.			493293 Blower Housing (Used on Engines with Band Brake)	455	691219	Flywheel Cup
37	224511	Flywheel Guard						
73	691222	Rotating Screen						
		<b>Note</b>						
		224527 Rotating Screen (Used Before Code Date 94111400). Used on Type No(s). 0847.						

★ Included in Engine Overhaul Gasket Set—See Ref. No. 358.  
● Included in Carburetor Overhaul Kit—See Ref. No.121.

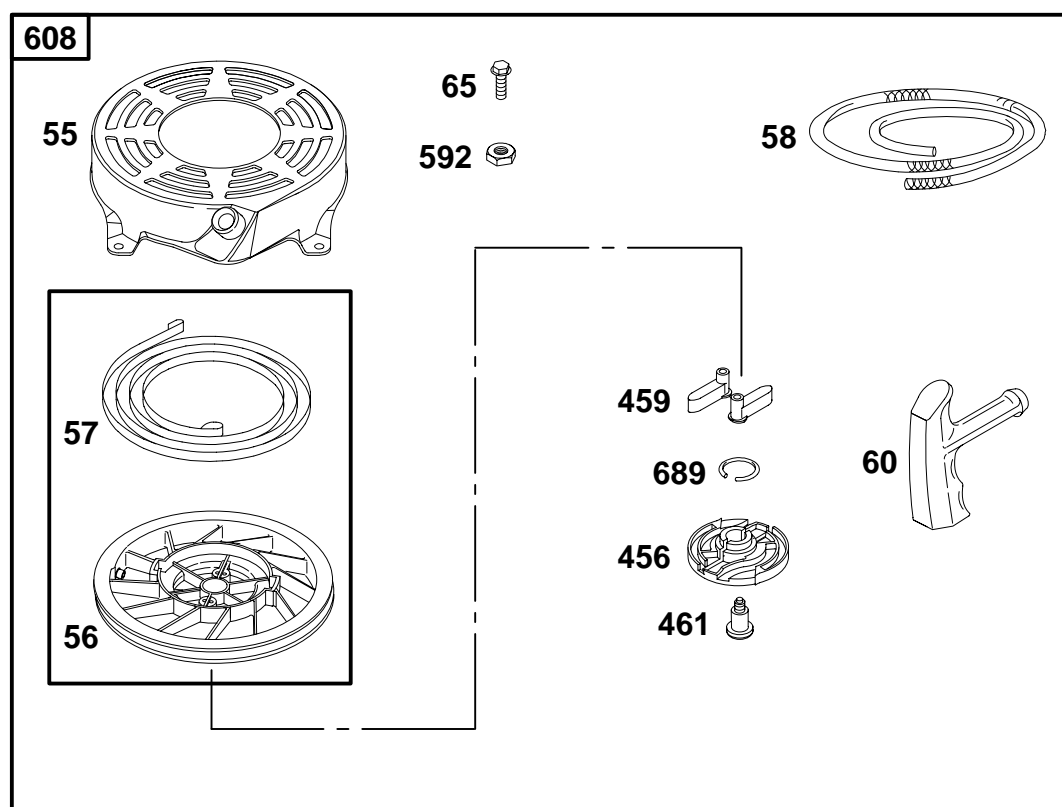
◆ Included in Carburetor Gasket Set—See Ref. No. 977.  
◊ Included in Valve Overhaul Gasket Set—See Ref. No. 1095.

0476-13

Assemblies include all parts shown in frames.

69

# 12G800 to 12G899



REF. NO.	PART NO.	DESCRIPTION	REF. NO.	PART NO.	DESCRIPTION	REF. NO.	PART NO.	DESCRIPTION
55	691421	Rewind Starter Housing	60	281434	Starter Rope Grip	461	94943	Screw (Pawl Friction Plate)
56	498144	Pulley/Spring Assembly	65	94904	Screw (Rewind Starter)	592	94908	Nut (Rewind Starter)
57	498144	Pulley/Spring Assembly	456	281503	Pawl Friction Plate	608	497680	Rewind Starter
58	280399	Starter Rope (Cut To Required Length)	459	281505	Ratchet Pawl	689	263073	Friction Spring

★ Included in Engine Overhaul Gasket Set—See Ref. No. 358.  
 ● Included in Carburetor Overhaul Kit—See Ref. No.121.

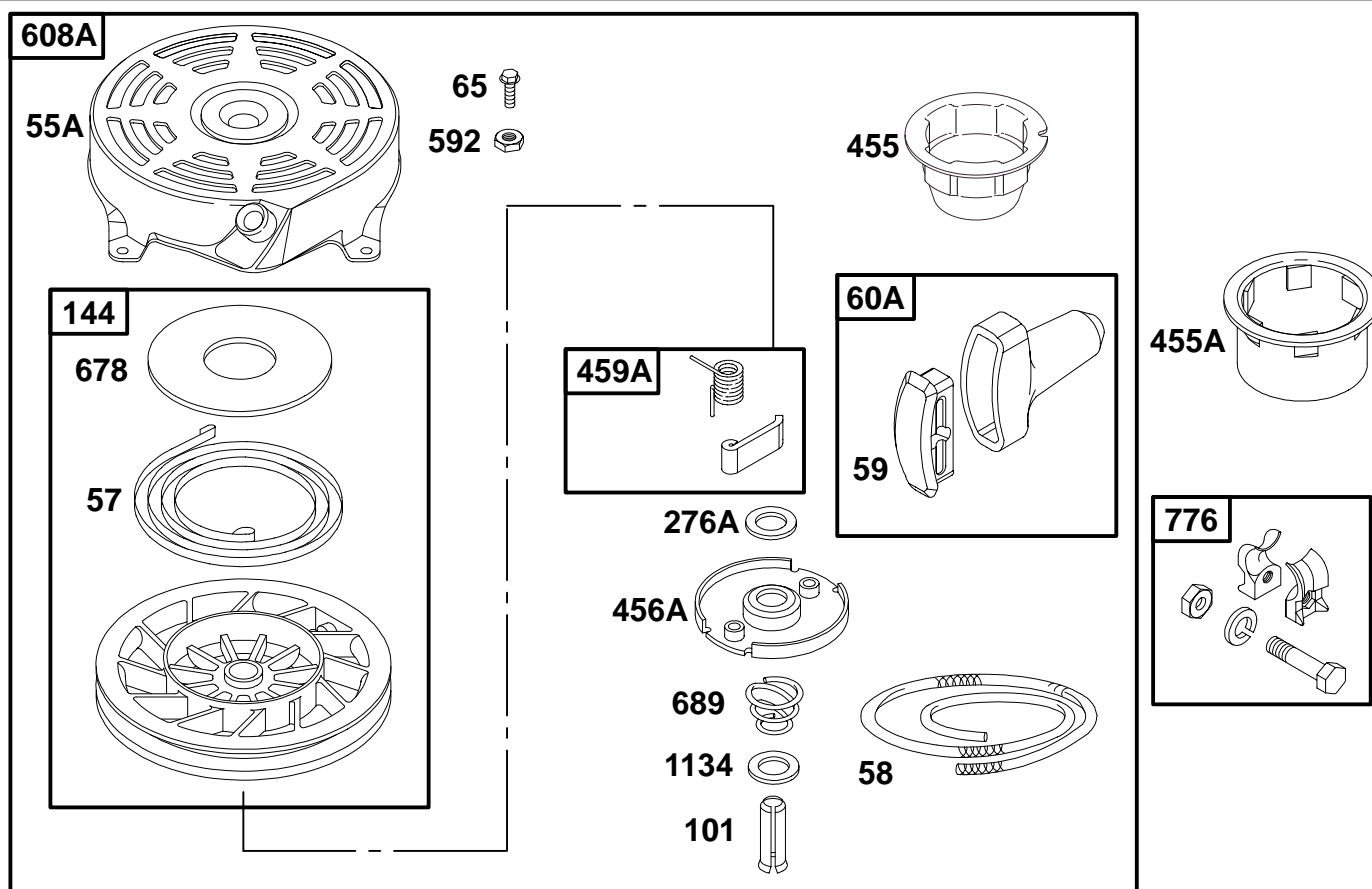
◆ Included in Carburetor Gasket Set—See Ref. No. 977.  
 Ø Included in Valve Overhaul Gasket Set—See Ref. No. 1095.

0476-14

Assemblies include all parts shown in frames.

69

# 12G800 to 12G899

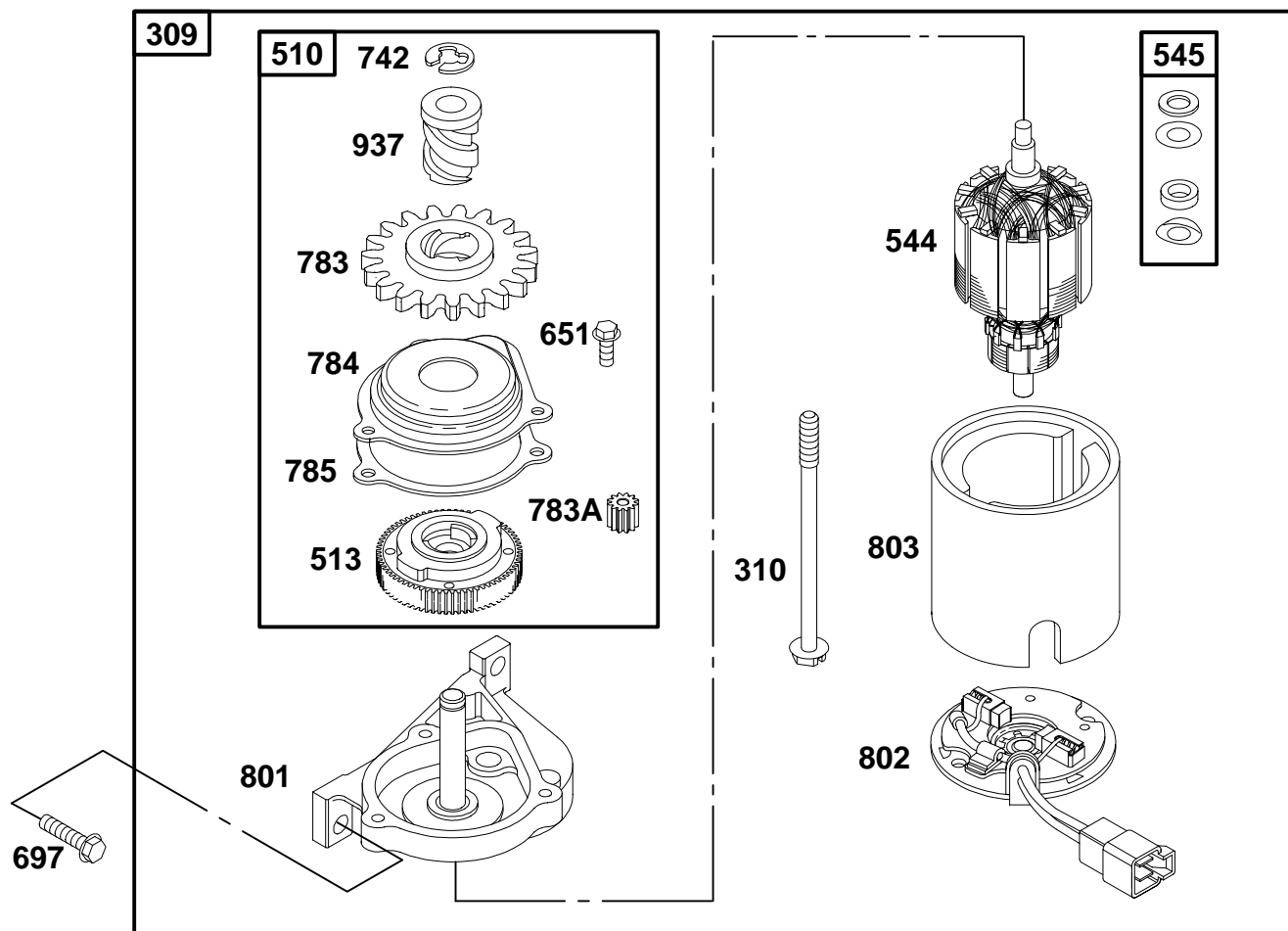


REF. NO.	PART NO.	DESCRIPTION	REF. NO.	PART NO.	DESCRIPTION	REF. NO.	PART NO.	DESCRIPTION
55A	492831	Rewind Starter Housing	65	94904	Screw (Rewind Starter)	592	94908	Nut (Rewind Starter)
57	491889	Rewind Starter Spring	101	262626	Shaft Pin	608A	497598	Rewind Starter
58	280399	Starter Rope (Cut To Required Length)	144	493824	Starter Pulley	678	224278	Rewind Spacer
59	396892	Grip Insert	276A	280973	Sealing Washer	689	262625	Friction Spring
60A	393152	Starter Rope Grip	455	691219	Flywheel Cup	776	396526	Rope Guide
			456A	224321	Pawl Friction Plate	1134	224322	Washer (Pawl Friction Plate)
			459A	492833	Ratchet Pawl			

★ Included in Engine Overhaul Gasket Set—See Ref. No. 358.  
 ● Included in Carburetor Overhaul Kit—See Ref. No. 121.

◆ Included in Carburetor Gasket Set—See Ref. No. 977.  
 Ø Included in Valve Overhaul Gasket Set—See Ref. No. 1095.

# 12G800 to 12G899



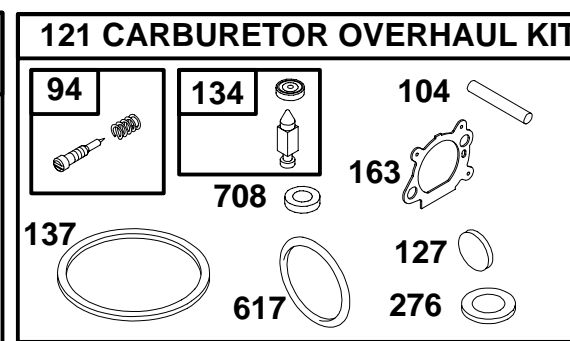
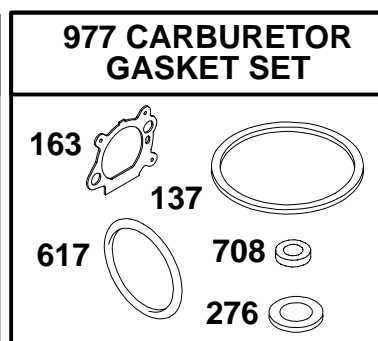
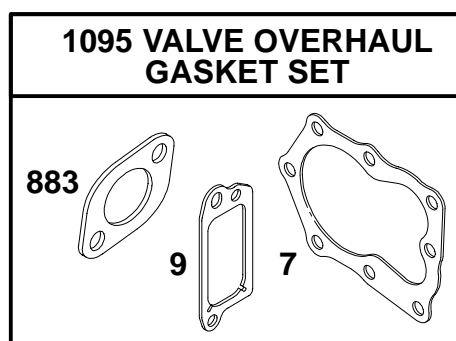
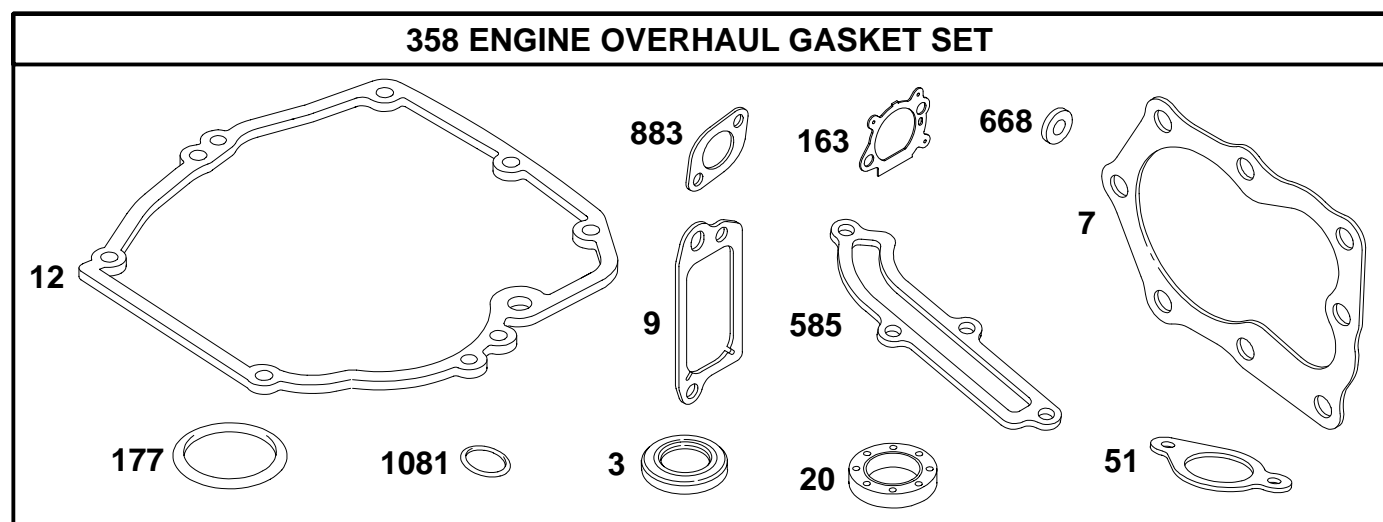
REF. NO.	PART NO.	DESCRIPTION	REF. NO.	PART NO.	DESCRIPTION	REF. NO.	PART NO.	DESCRIPTION
309	691376	Starter Motor	545	492919	Washer Set (Starter Motor)	783	281127	Pinion Gear
310	692327	Bolt (Starter Motor)	651	93490	Screw (Starter Gear Cover)	783A	691269	Pinion Gear
510	494147	Starter Drive	697	691127	Screw (Drive Cap)	784	692341	Starter Gear Cover
513	692358	Drive Clutch	742	93941	E-Ring Retainer	785	692352	Starter Cover Gasket
544	692786	Starter Armature				801	690782	Drive Cap
						802	690787	End Cap
						803	690785	Starter Housing
						937	691325	Starter Spline

★ Included in Engine Overhaul Gasket Set—See Ref. No. 358.  
 ● Included in Carburetor Overhaul Kit—See Ref. No.121.

◆ Included in Carburetor Gasket Set—See Ref. No. 977.  
 Ø Included in Valve Overhaul Gasket Set—See Ref. No. 1095.



# 12G800 to 12G899



REF. NO.	PART NO.	DESCRIPTION	REF. NO.	PART NO.	DESCRIPTION	REF. NO.	PART NO.	DESCRIPTION
3	★299819	Oil Seal (Magneto Side)	134	●398188	Needle/Seat Kit	617	●●270344	O—Ring Seal (Intake Manifold)
7	★Ø272916	Cylinder Head Gasket	137	●●	Float Bowl Gasket (Sold in Kit Only)	668	★493823	Spacer (Includes 2)
9	★Ø272481	Breather Gasket	163	★●●272653	Air Cleaner Gasket	708	●◆691321	Dust Seal
12	★272198	Crankcase Gasket	177	★280393	O—Ring Seal (Dipstick)	883	★Ø272253	Exhaust Gasket
20	★399781	Oil Seal (PTO Side)	276	●●	Sealing Washer (Sold in Kit Only)	977	498261	Carburetor Gasket Set
51	★272199	Intake Gasket	358	497316	Engine Overhaul Gasket Set	1081	★280966	O—Ring Seal (Dipstick Tube)
94	●493765	Idle Mixture Kit	585	★272238	Breather Passage Gasket	1095	498528	Valve Overhaul Gasket Set
104	●691242	Float Hinge Pin						
121	498260	Carburetor Overhaul Kit						
127	●	Welch Plug (Sold in Kit Only)						

★ Included in Engine Overhaul Gasket Set—See Ref. No. 358.  
 ◆ Included in Carburetor Overhaul Kit—See Ref. No. 121.

◆ Included in Carburetor Gasket Set—See Ref. No. 977.  
 Ø Included in Valve Overhaul Gasket Set—See Ref. No. 1095.