

# 11A600 to 11A699

## Illustrated Parts List Model Series 11A600 to 11A699

TYPE NUMBERS  
0100, 0111, 0113,  
0114, 0118, 0147.

### TO FIND THE CORRECT NUMBER OF THE PART YOU NEED: FOLLOW THE INSTRUCTIONS BELOW

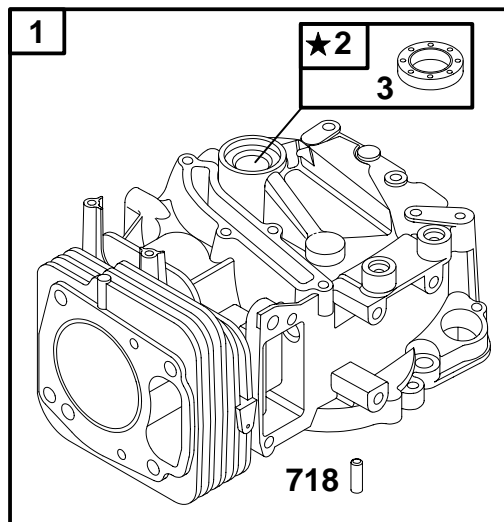
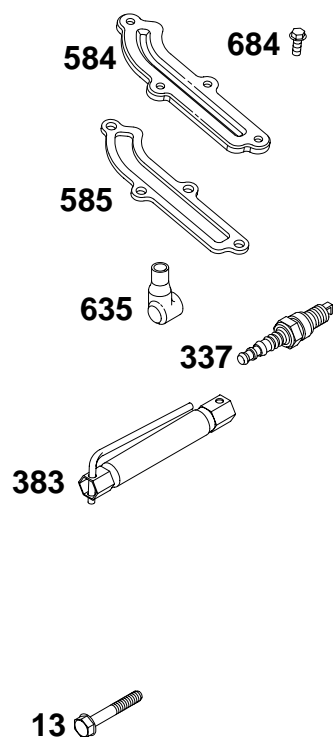
- A. Refer to Engine Model, Type and Code Number that is stamped on the blower housing of engine. Engine type numbers such as 0123 01 are listed only as 0123 in most instances. The two digits (01 or 02, etc.) to the right of the space may be required for more accurate parts identification in some instances. Select the Illustrated Parts List covering the correct Model Series and Type Number.
- B. Refer to the Illustrations and compare the original part with Illustration. The number next to the illustration is the Reference Number. Assemblies include all parts shown in frames. All parts shown in assembly frames having individual reference numbers can be purchased separately.
- C. After the Reference Number has been identified, refer to the Numerical text, where Reference and Primary Part Number are listed. **THE PRIMARY PART IS USED ON ALL TYPE NUMBERS EXCEPT THOSE TYPE NUMBERS UNDER "NOTE."**
- D. If a "Note" appears below the Primary Part Number, it means that this part differs from the Primary Part for certain types. If your Type number is listed under "Note," order the part referred to at the "Note."
- E. If your Engine Type Number does not appear after any part number listed under "Note," use the Primary Part Number.
- F. For Engine Type Numbers not covered by this book, check other Parts Lists having the same engine model or contact your source of supply.

PRINTED IN U.S.A.



COPYRIGHT by BRIGGS & STRATTON CORPORATION  
All rights reserved. No part of this material may be reproduced or transmitted, in any form or by any means, electronic or mechanical, including photocopying, recording or by any information storage and retrieval system, without permission in writing from Briggs & Stratton Corporation.

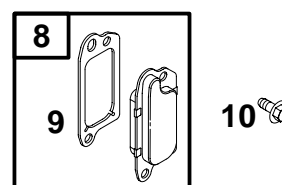
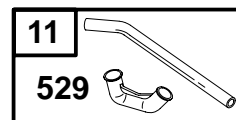
## 11A600 to 11A699



★ **REQUIRES SPECIAL TOOLS TO INSTALL. SEE REPAIR INSTRUCTION MANUAL.**

**1058 OWNER'S MANUAL**

**1019 KIT-LABEL**



| REF. NO. | PART NO. | DESCRIPTION                     | REF. NO. | PART NO. | DESCRIPTION             | REF. NO. | PART NO. | DESCRIPTION                    |
|----------|----------|---------------------------------|----------|----------|-------------------------|----------|----------|--------------------------------|
| 1        | 692670   | Cylinder Assembly               | 13       | 691137   | Screw (Cylinder Head)   | 635      | 66538    | Boot-Sparkplug                 |
| 2        | 399269   | Kit-Bushing/Seal (Magneto Side) | 337      | 692051   | Sparkplug               | 684      | 690345   | Screw (Breather Passage Cover) |
| 3        | ★299819  | Seal-Oil (Magneto Side)         | 383      | 19374    | Wrench-Sparkplug        | 718      | 230192   | Pin-Locating                   |
| 8        | 495786   | Breather Assembly               | 529      | 281736   | Grommet                 | 1019     | 695811   | Kit-Label                      |
| 9        | ★272481  | Gasket-Breather                 | 584      | 692342   | Cover-Breather Passage  | 1058     | 274782   | Owner's Manual                 |
| 10       | 691125   | Screw (Breather Assembly)       | 585      | ★272238  | Gasket-Breather Passage |          |          |                                |
| 11       | 499675   | Tube-Breather                   |          |          |                         |          |          |                                |

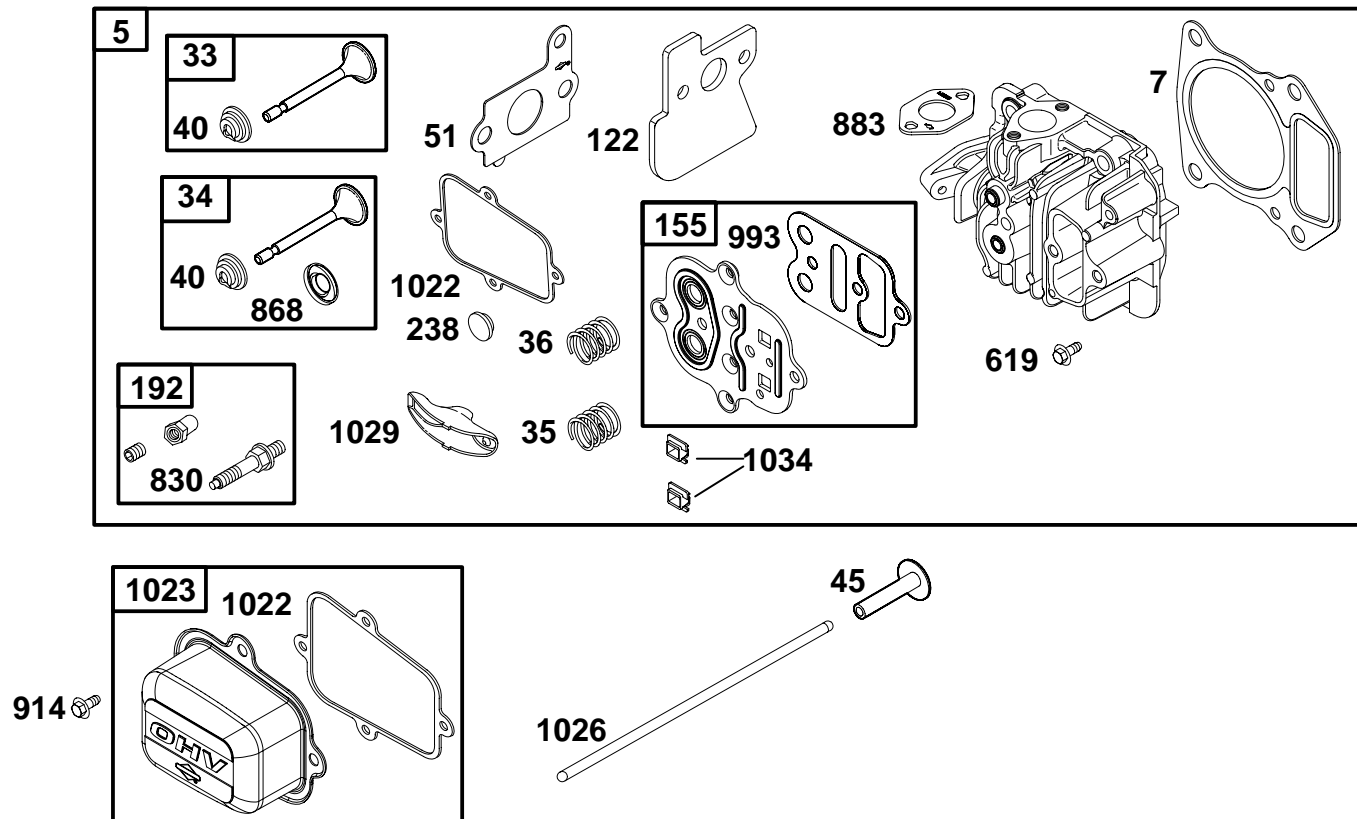
★ Included in Engine Gasket Set-Ref. No. 358.

△ Included in Valve Gasket Set-Ref. No. 1095.

● Included in Carburetor Overhaul Kit-Ref. No. 121.

◆ Included in Carburetor Gasket Set-Ref. No. 977.

## 11A600 to 11A699



| REF. NO. | PART NO. | DESCRIPTION            | REF. NO. | PART NO. | DESCRIPTION                 | REF. NO. | PART NO. | DESCRIPTION                |
|----------|----------|------------------------|----------|----------|-----------------------------|----------|----------|----------------------------|
| 5        | 695276   | Head-Cylinder          | 122★◆△   | 692799   | Spacer-Carburetor           | 914      | 691108   | Screw                      |
| 7        | ★△695166 | Gasket-Cylinder Head   | 155      | 695168   | Plate-Cylinder Head         |          |          | (Rocker Arm Cover)         |
| 33       | 499642   | Valve-Exhaust          | 192      | 694543   | Adjuster-Rocker Arm         | 993      | ★△694088 | Gasket-Cylinder Head Plate |
| 34       | 499641   | Valve-Intake           | 238      | 691300   | Cap-Valve                   | 1022     | ★△691890 | Gasket-Rocker Cover        |
| 35       | 691304   | Spring-Valve (Intake)  | 619      | 691108   | Screw (Cylinder Head Plate) | 1023     | 499624   | Cover-Rocker Arm           |
| 36       | 691304   | Spring-Valve (Exhaust) | 830      | 694544   | Stud (Rocker Arm)           | 1026     | 498597   | Rod-Push                   |
| 40       | 93312    | Retainer-Valve         | 868      | ★△498592 | Seal-Valve                  | 1029     | 691230   | Arm-Rocker                 |
| 45       | 262679   | Tappet-Valve           | 883      | ★△273348 | Gasket-Exhaust              | 1034     | 691343   | Guide-Push Rod             |
| 51◆◆     | 692668   | Gasket-Intake          |          |          |                             |          |          |                            |

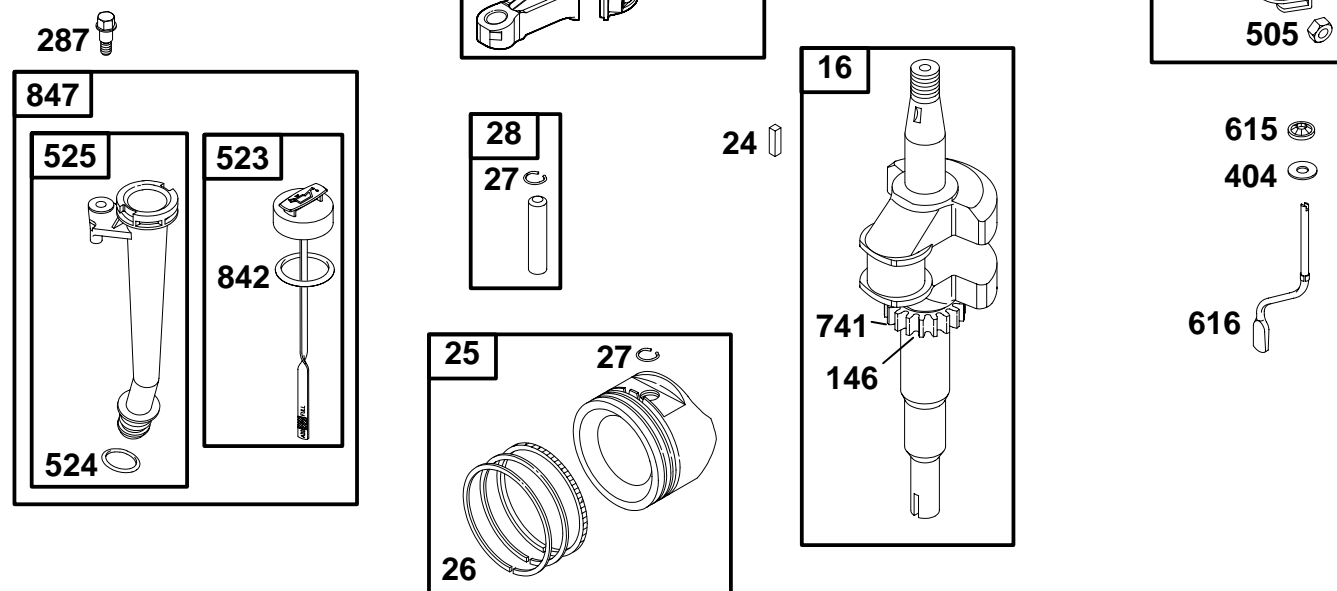
★ Included in Engine Gasket Set-Ref. No. 358.

△ Included in Valve Gasket Set-Ref. No. 1095.

◆ Included in Carburetor Overhaul Kit-Ref. No. 121.

◆ Included in Carburetor Gasket Set-Ref. No. 977.

# 11A600 to 11A699



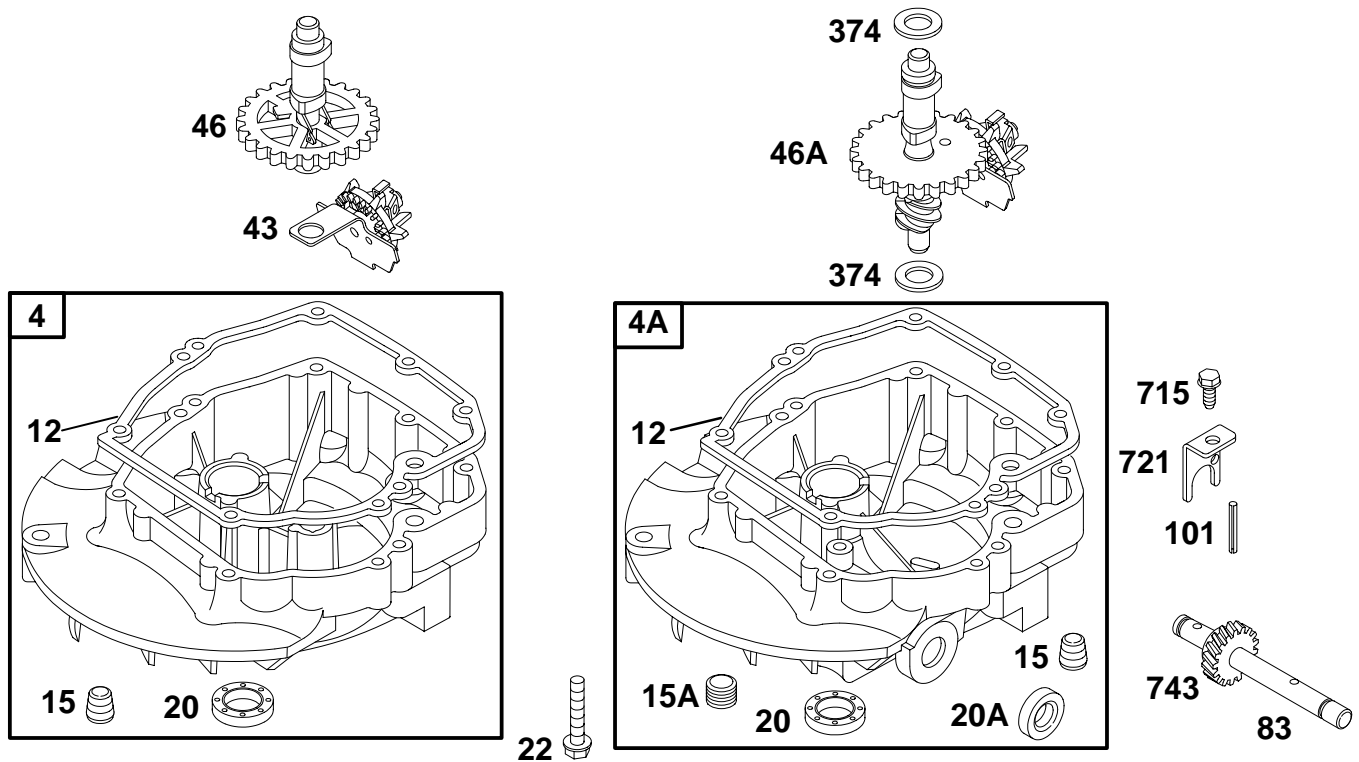
| REF. NO.  | PART NO.      | DESCRIPTION  | REF. NO.   | PART NO.      | DESCRIPTION   | REF. NO.   | PART NO.       | DESCRIPTION  |
|-----------|---------------|--|------------|---------------|---|------------|----------------|--|
| <b>16</b> | <b>692676</b> | Crankshaft<br><b>Note</b><br><b>692798</b> Crankshaft<br>Used on Type No(s).<br>0118.  | <b>26</b>  | <b>499425</b> | Ring Set<br>(Standard)<br><b>Note</b><br><b>499426</b> Ring Set<br>(.010" O.S.)<br><b>499427</b> Ring Set<br>(.020" O.S.)<br><b>499428</b> Ring Set<br>(.030" O.S.) | <b>505</b> | <b>231082</b>  | Nut<br>(Governor Control<br>Lever)                 |
| <b>24</b> | <b>222698</b> | Key-Flywheel   | <b>27</b>  | <b>263190</b> | Lock-Piston Pin   | <b>523</b> | <b>495264</b>  | Dipstick   |
| <b>25</b> | <b>499429</b> | Piston Assembly<br>(Standard)<br><b>Note</b><br><b>499430</b> Piston<br>Assembly<br>(.010" O.S.)<br><b>499431</b> Piston<br>Assembly<br>(.020" O.S.)<br><b>499432</b> Piston<br>Assembly<br>(.030" O.S.)<br>(Standard) | <b>28</b>  | <b>499423</b> | Pin-Piston  | <b>524</b> | <b>★280966</b> | Seal-Dipstick Tube                                 |
|           |               |  | <b>29</b>  | <b>692671</b> | Rod-Connecting  | <b>525</b> | <b>495265</b>  | Tube-Dipstick                                      |
|           |               |  | <b>32</b>  | <b>94699</b>  | Screw<br>(Connecting Rod)   | <b>562</b> | <b>94852</b>   | Bolt<br>(Governor Control<br>Lever)                |
|           |               |  | <b>146</b> | <b>94388</b>  | Key-Timing  | <b>615</b> | <b>690340</b>  | Retainer-Governor<br>Shaft                         |
|           |               |  | <b>227</b> | <b>691467</b> | Lever-Governor<br>Control   | <b>616</b> | <b>691306</b>  | Crank-Governor                                     |
|           |               |  | <b>287</b> | <b>94511</b>  | Screw<br>(Dipstick Tube)  | <b>741</b> | <b>262598</b>  | Gear-Timing  |
|           |               |  | <b>404</b> | <b>690272</b> | Washer<br>(Governor Crank)  | <b>842</b> | <b>★280393</b> | Seal-O Ring<br>(Tube & Dipstick/Cap<br>Combo Only) |
|           |               |  |            |               |   | <b>847</b> | <b>495263</b>  | Dipstick/Tube<br>Assembly                          |

★ Included in Engine Gasket Set-Ref. No. 358.

△ Included in Valve Gasket Set-Ref. No. 1095.

● Included in Carburetor Overhaul Kit-Ref. No. 121.

◆ Included in Carburetor Gasket Set-Ref. No. 977.



| REF. NO. | PART NO. | DESCRIPTION  | REF. NO. | PART NO. | DESCRIPTION   | REF. NO. | PART NO. | DESCRIPTION  |
|----------|----------|--|----------|----------|---|----------|----------|--|
| 4        | 499619   | Sump-Engine  | 22       | 691092   | Screw<br>(Crankcase<br>Cover/Sump)                    | 101      | 93474    | Pin-Shaft  |
| 4A       | 493365   | Sump-Engine<br>Used on Type No(s).<br>0118.                        | 43       | 493737   | Slinger-Governor/Oil                                  | 374      | 691074   | Washer<br>(Camshaft)   |
| 12       | ★272198  | Gasket-Crankcase   | 46       | 694039   | Camshaft  | 715      | 94929    | Screw<br>(Stop Shaft)  |
| 15       | 94880    | Plug-Oil Drain   | 46A      | 694037   | Camshaft<br>(Counterclockwise)                        | 721      | 690449   | Stop-Shaft   |
| 15A      | 691093   | Plug-Oil Drain   | 83       | 690527   | Shaft-Auxiliary Drive<br>Used on Type No(s).<br>0118. | 743      | 231279   | Gear-Drive<br>(Counterclockwise)<br>Used on Type No(s).<br>0114. |
| 20       | ★399781  | Seal-Oil<br>(PTO Side, 1 11/16"<br>O.D. With Spring)               |          |          |   |          |          |  |
| 20A      | 391484   | Seal-Oil<br>(PTO Side, Auxiliary<br>Drive, 1" O.D. With<br>Spring) |          |          |   |          |          |  |

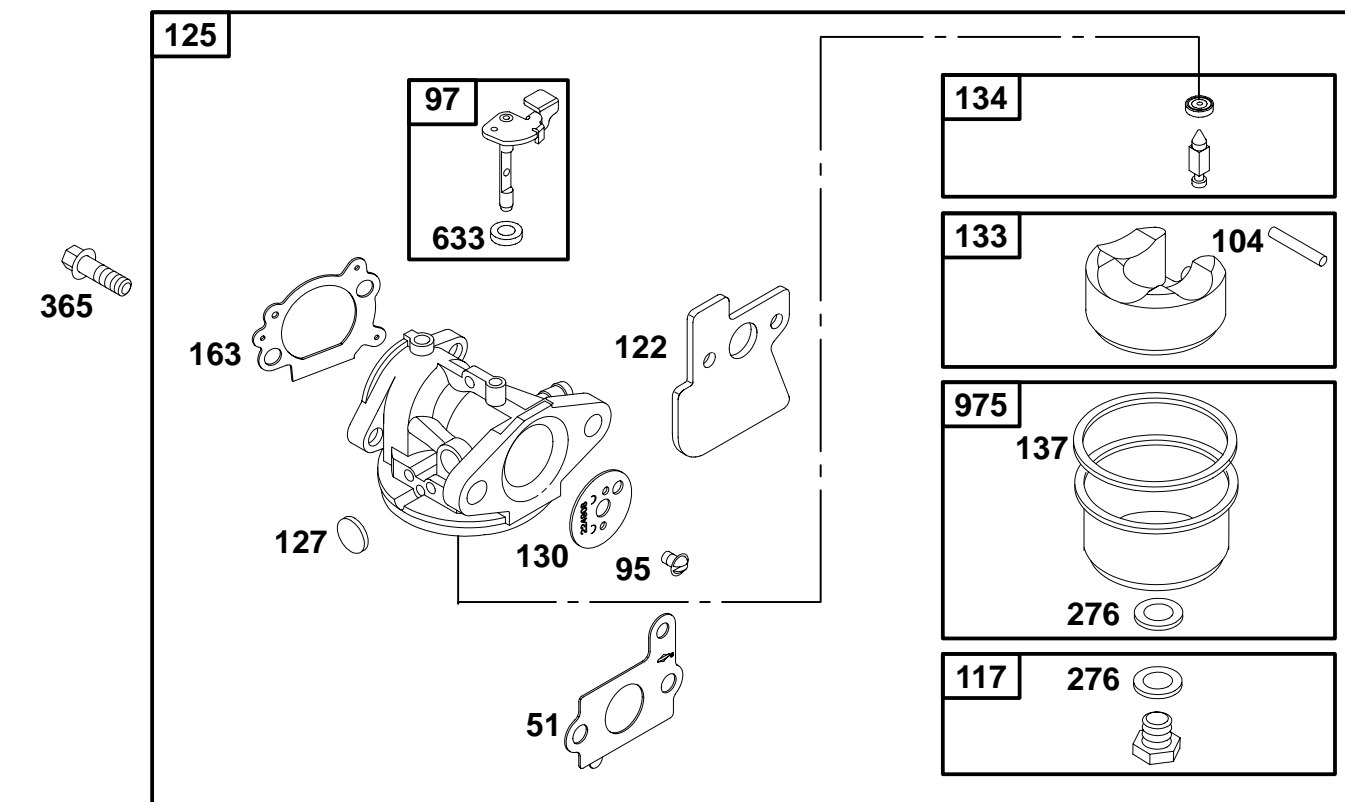
★ Included in Engine Gasket Set-Ref. No. 358.

△ Included in Valve Gasket Set-Ref. No. 1095.

● Included in Carburetor Overhaul Kit-Ref. No. 121.

◆ Included in Carburetor Gasket Set-Ref. No. 977.

# 11A600 to 11A699

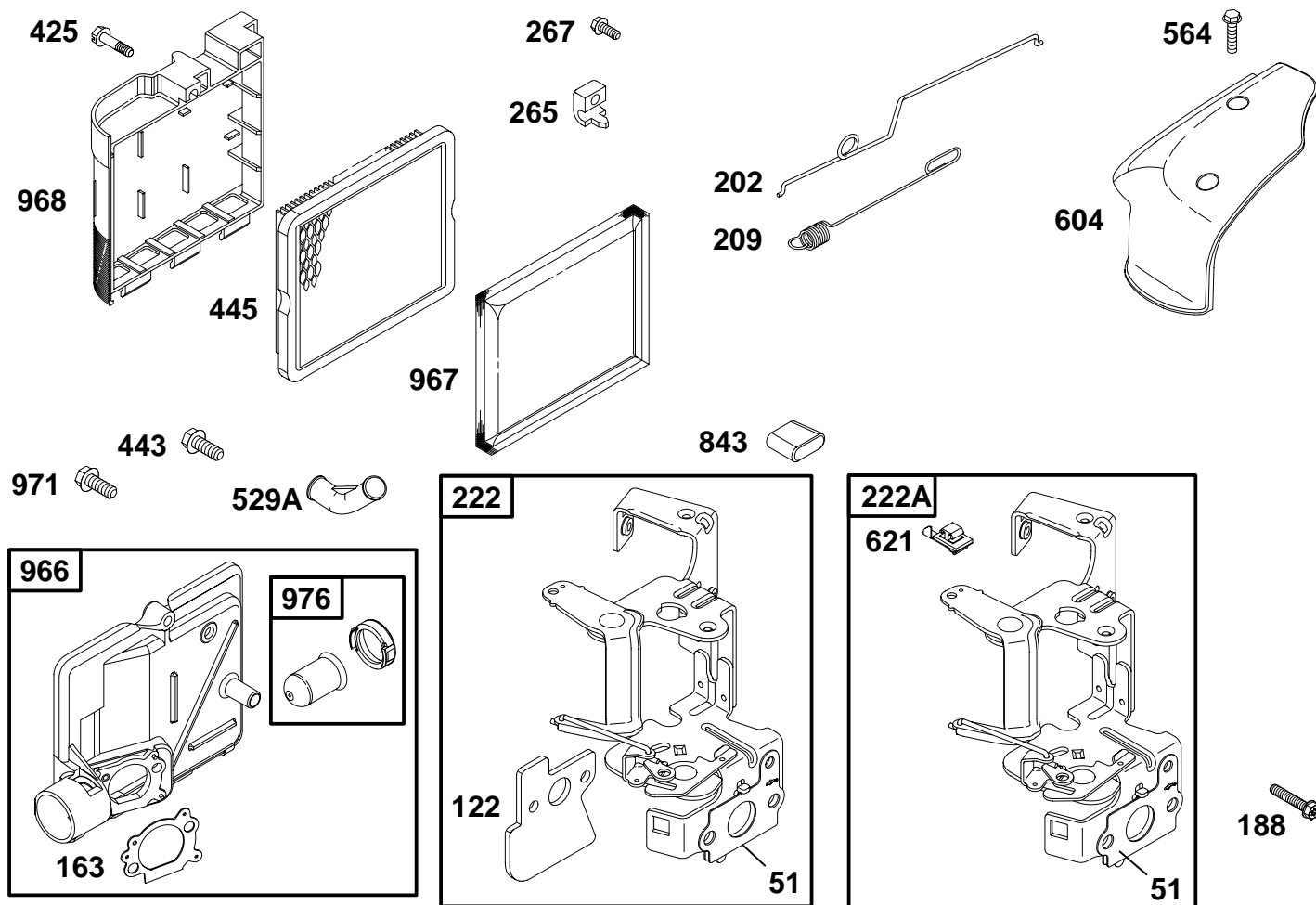


| REF. NO. | PART NO. | DESCRIPTION            | REF. NO. | PART NO. | DESCRIPTION              | REF. NO. | PART NO. | DESCRIPTION               |
|----------|----------|------------------------|----------|----------|--------------------------|----------|----------|---------------------------|
| 51★◆△    | 692668   | Gasket-Intake          | 117      | 498978   | Jet-Main (Standard)      | 134      | ◆398188  | Kit-Needle/Seat           |
| 95       | 94098    | Screw (Throttle Valve) |          |          | <b>Note</b>              | 137      | ◆◆693981 | Gasket-Float Bowl         |
| 97       | 499682   | Shaft-Throttle         |          | 498975   | Jet-Main (High Altitude) | 163★◆◆   | 692667   | Gasket-Air Cleaner        |
| 104      | ◆691242  | Pin-Float Hinge        | 122★◆◆△  | 692799   | Spacer-Carburetor        | 276      | ◆◆271716 | Washer-Sealing            |
|          |          |                        | 125      | 694202   | Carburetor               | 365      | 691136   | Screw (Carburetor)        |
|          |          |                        | 127      | ◆694468  | Plug-Welch               | 633      | ◆◆691321 | Seal-Choke/Throttle Shaft |
|          |          |                        | 130      | 691203   | Valve-Throttle           | 975      | 493640   | Bowl-Float                |
|          |          |                        | 133      | 398187   | Float-Carburetor         |          |          |                           |

★ Included in Engine Gasket Set-Ref. No. 358.  
 △ Included in Valve Gasket Set-Ref. No. 1095.

◆ Included in Carburetor Overhaul Kit-Ref. No. 121.  
 ◆ Included in Carburetor Gasket Set-Ref. No. 977.

# 11A600 to 11A699

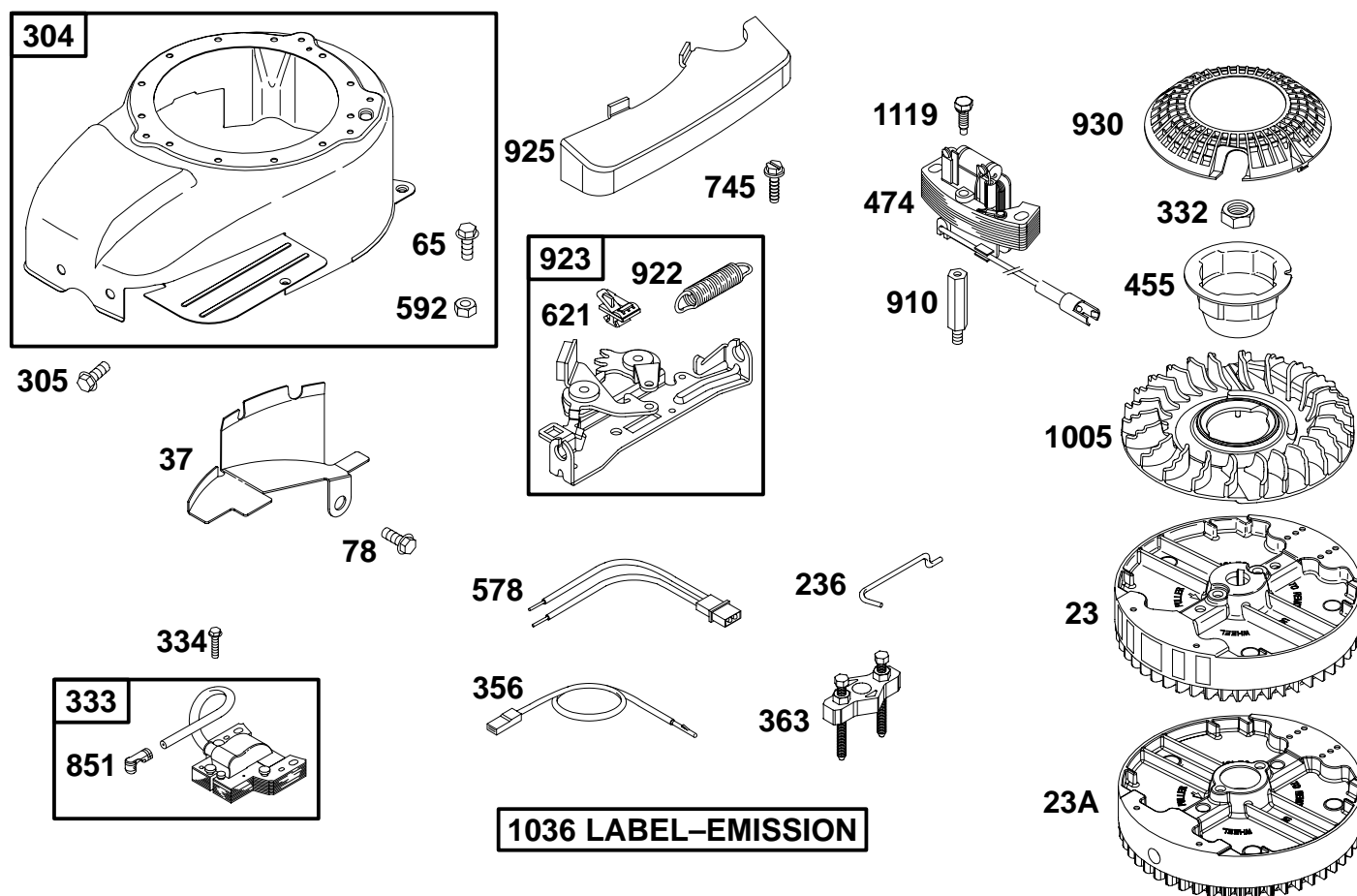


| REF. NO. | PART NO.    | DESCRIPTION                     | REF. NO. | PART NO.    | DESCRIPTION                     | REF. NO. | PART NO. | DESCRIPTION                            |
|----------|-------------|---------------------------------|----------|-------------|---------------------------------|----------|----------|--|
| 51       | 692668      | Gasket-Intake                   | 222      | 693897      | Bracket-Control                 | 445      | 491588   | Filter-Air Cleaner Cartridge           |
| 122      | 692799      | Spacer-Carburetor               |          | <b>Note</b> |                                 | 529A     | 281299   | Grommet                                |
| 163      | 692667      | Gasket-Air Cleaner              |          | 692672      | Bracket-Control                 | 564      | 693808   | Screw (Control Cover)                  |
| 188      | 691147      | Screw (Control Bracket)         |          |             | Used on Type No(s). 0118.       | 604      | 692669   | Cover-Control                          |
| 202      | 691303      | Link-Mechanical Governor        | 222A     | 693378      | Bracket-Control                 | 621      | 396847   | Switch-Stop                            |
| 209      | 263042      | Spring-Governor                 |          |             | Used on Type No(s). 0111, 0113. | 843      | 272616   | Sleeve-Lever                           |
|          | <b>Note</b> |                                 | 265      | 213146      | Clamp-Casing                    | 966      | 692673   | Base-Air Cleaner Primer                |
|          | 691291      | Spring-Governor                 | 267      | 691044      | Screw (Casing Clamp)            | 967      | 493537   | Filter-Pre Cleaner                     |
|          |             | Used on Type No(s). 0111, 0113. | 425      | 94872       | Screw (Air Cleaner Cover)       | 968      | 281340   | Cover-Air Cleaner                      |
|          |             |                                 | 443      | 94118       | Screw (Air Cleaner Primer Base) | 971      | 94873    | Screw (Air Cleaner Base to Carburetor) |
|          |             |                                 |          |             |                                 | 976      | 496115   | Primer-Carburetor                      |

★ Included in Engine Gasket Set-Ref. No. 358.  
 Δ Included in Valve Gasket Set-Ref. No. 1095.

● Included in Carburetor Overhaul Kit-Ref. No. 121.  
 ◆ Included in Carburetor Gasket Set-Ref. No. 977.

# 11A600 to 11A699



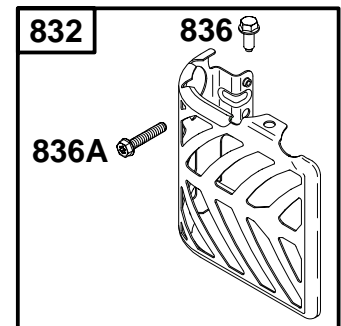
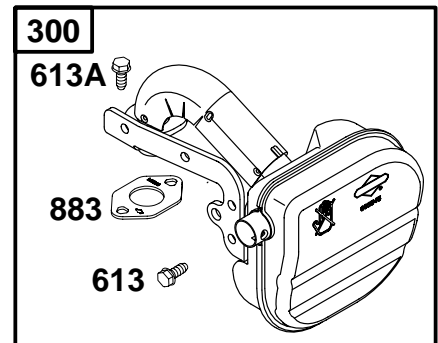
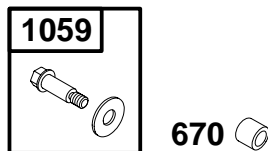
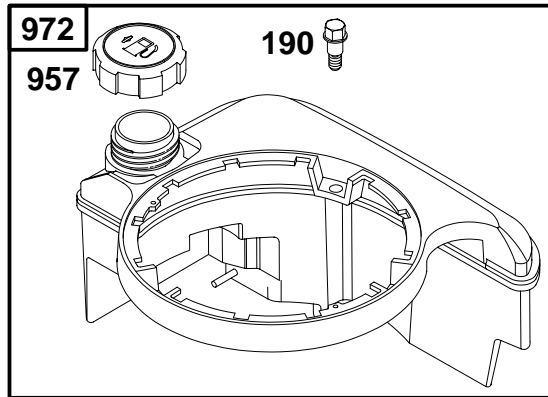
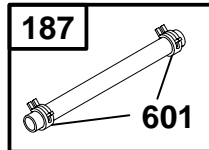
| REF. NO.                        | PART NO. | DESCRIPTION                           | REF. NO. | PART NO. | DESCRIPTION              | REF. NO. | PART NO. | DESCRIPTION        |
|---------------------------------|----------|---------------------------------------|----------|----------|--------------------------|----------|----------|--------------------|
| 23                              | 692452   | Flywheel                              | 305      | 690960   | Screw (Blower Housing)   | 745      | 94512    | Screw (Brake)      |
| 23A                             | 692693   | Flywheel<br>Used on Type No(s). 0111. | 332      | 94877    | Nut (Flywheel)           | 851      | 493880   | Terminal-Sparkplug |
| 37                              | 694086   | Guard-Flywheel                        | 333      | 802574   | Armature-Magneto         | 910      | 691094   | Stud (Alternator)  |
| 65                              | 94904    | Screw (Rewind Starter)                | 334      | 94731    | Screw (Magneto Armature) | 922      | 262640   | Spring-Brake       |
| 78                              | 691108   | Screw (Flywheel Guard)                | 356      | 692390   | Wire-Stop                | 923      | 493442   | Brake              |
| 236                             | 262461   | Link-Lockout                          | 363      | 19069    | Puller-Flywheel          | 925      | 690595   | Cover-Linkage      |
| 304                             | 499677   | Housing-Blower                        | 455      | 691219   | Cup-Flywheel             | 930      | 281136   | Guard-Rewind       |
| <b>Note</b>                     |          |                                       | 474      | 492841   | Alternator               | 1005     | 691346   | Fan-Flywheel       |
| 499676 Housing-Blower           |          |                                       | 578      | 398153   | Wire Assembly            | 1036     | 695109   | Label-Emission     |
| Used on Type No(s). 0111, 0113. |          |                                       | 592      | 94908    | Nut (Rewind Starter)     | 1119     | 692979   | Screw (Alternator) |
|                                 |          |                                       | 621      | 396847   | Switch-Stop              |          |          |                    |

★ Included in Engine Gasket Set-Ref. No. 358.  
 △ Included in Valve Gasket Set-Ref. No. 1095.

● Included in Carburetor Overhaul Kit-Ref. No. 121.  
 ◆ Included in Carburetor Gasket Set-Ref. No. 977.



## 11A600 to 11A699



| REF. NO. | PART NO. | DESCRIPTION                       | REF. NO. | PART NO. | DESCRIPTION             | REF. NO. | PART NO. | DESCRIPTION                  |
|----------|----------|-----------------------------------|----------|----------|-------------------------|----------|----------|------------------------------|
| 187      | 298049   | Line-Fuel                         | 613      | 691108   | Screw (Exhaust Muffler) | 836      | 691147   | Screw (Muffler Guard)        |
| 190      | 94511    | Screw (Fuel Tank)                 | 613A     | 691140   | Screw (Exhaust Muffler) | 836A     | 692557   | Screw (Muffler Guard)        |
| 300      | 693982   | Muffler Used on Type No(s). 0100. | 670      | 280512   | Spacer-Fuel Tank        | 883      | ★△273348 | Gasket-Exhaust               |
| 601      | 93053    | Clamp-Hose                        | 832      | 695593   | Guard-Muffler           | 957      | 397974   | Cap-Fuel Tank                |
|          |          |                                   |          |          |                         | 972      | 495224   | Tank-Fuel                    |
|          |          |                                   |          |          |                         | 1059     | 398540   | Kit-Screw/Washer (Fuel Tank) |

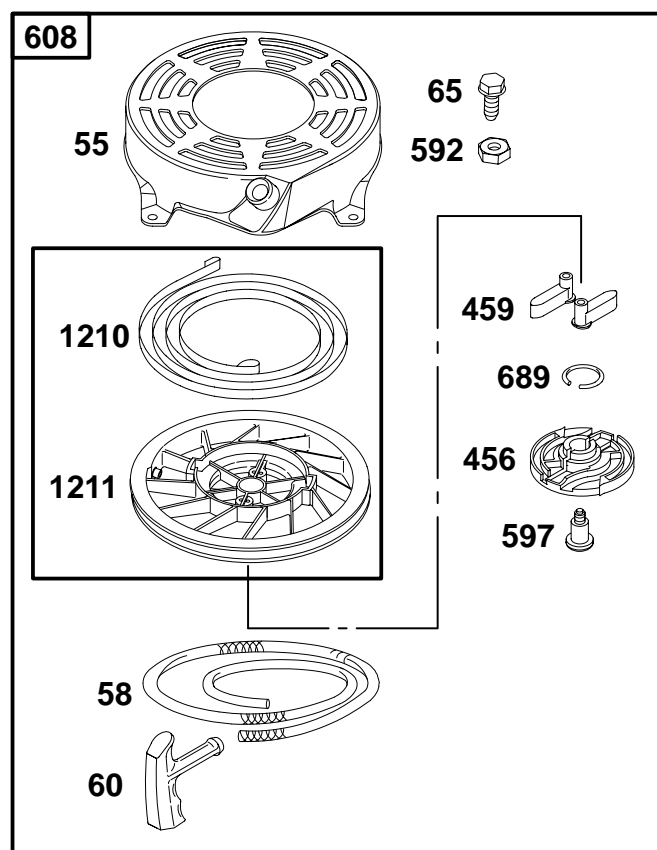
★ Included in Engine Gasket Set-Ref. No. 358.

△ Included in Valve Gasket Set-Ref. No. 1095.

● Included in Carburetor Overhaul Kit-Ref. No. 121.

◆ Included in Carburetor Gasket Set-Ref. No. 977.

# 11A600 to 11A699



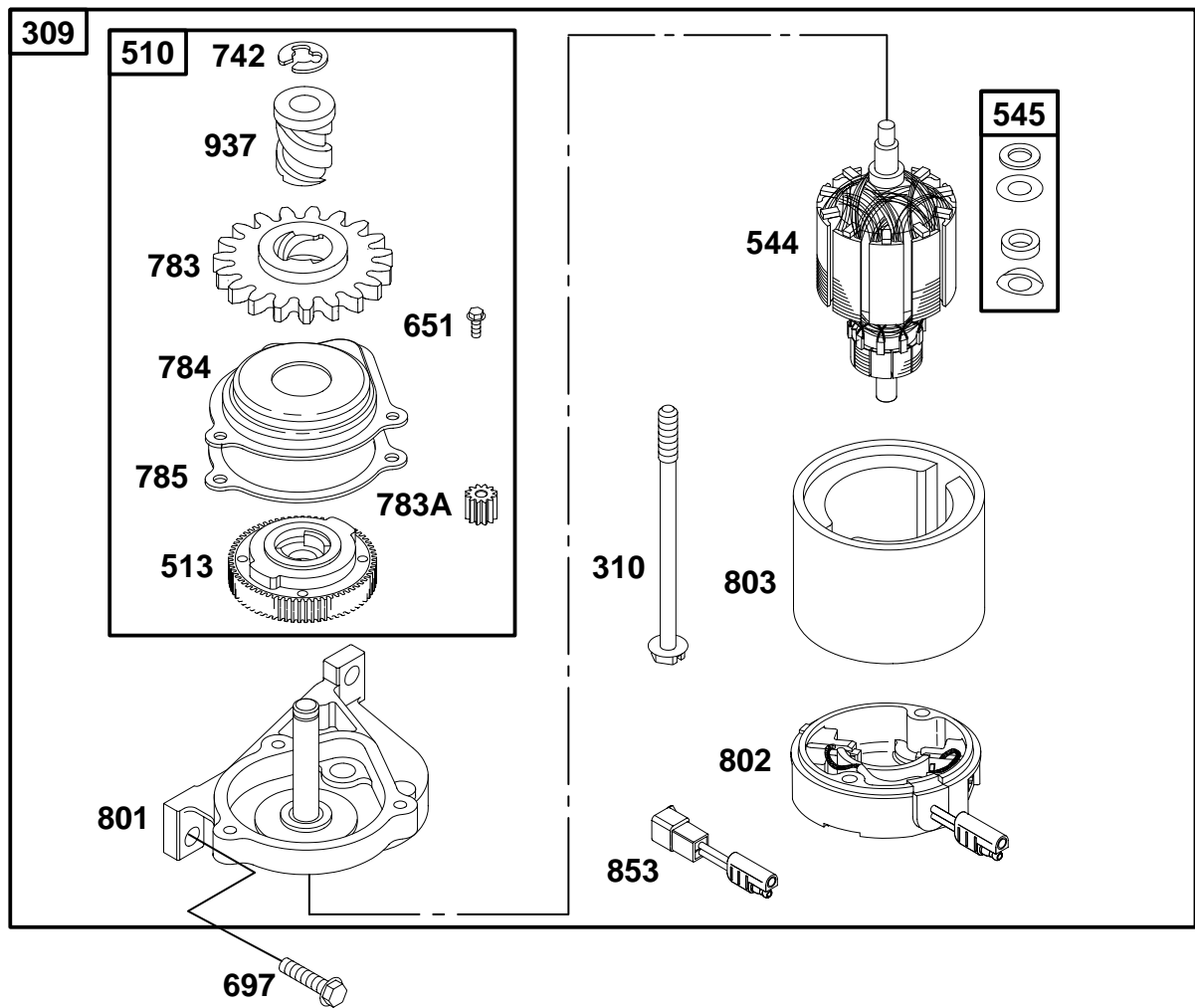
| REF. NO. | PART NO. | DESCRIPTION                  | REF. NO. | PART NO. | DESCRIPTION                 | REF. NO. | PART NO. | DESCRIPTION                     |
|----------|----------|------------------------------|----------|----------|-----------------------------|----------|----------|---------------------------------|
| 55       | 691421   | Housing-Rewind Starter       | 456      | 281503   | Plate-Pawl Friction         | 689      | 263073   | Spring-Friction                 |
| 58       | 281464   | Rope-Starter (Cut To Length) | 459      | 281505   | Pawl-Ratchet                | 1210     | 498144   | Pulley/Spring Assembly (Pulley) |
| 60       | 281434   | Grip-Starter Rope            | 592      | 94908    | Nut (Rewind Starter)        | 1211     | 498144   | Pulley/Spring Assembly (Spring) |
| 65       | 94904    | Screw (Rewind Starter)       | 597      | 94943    | Screw (Pawl Friction Plate) |          |          |                                 |
|          |          |                              | 608      | 497680   | Starter-Rewind              |          |          |                                 |

★ Included in Engine Gasket Set-Ref. No. 358.

△ Included in Valve Gasket Set-Ref. No. 1095.

● Included in Carburetor Overhaul Kit-Ref. No. 121.

◆ Included in Carburetor Gasket Set-Ref. No. 977.



| REF. NO. | PART NO. | DESCRIPTION             | REF. NO. | PART NO. | DESCRIPTION                   | REF. NO. | PART NO. | DESCRIPTION          |
|----------|----------|-------------------------|----------|----------|-------------------------------|----------|----------|----------------------|
| 309      | 695550   | Starter Motor           | 651      | 93490    | Screw<br>(Starter Gear Cover) | 784      | 692341   | Gear Cover           |
| 310      | 692327   | Bolt<br>(Starter Motor) | 697      | 691127   | Screw<br>(Drive Cap)          | 785      | 692352   | Starter Cover Gasket |
| 510      | 494147   | Starter Drive           | 742      | 93941    | E-Ring Retainer               | 801      | 690782   | Drive Cap            |
| 513      | 692358   | Drive Clutch            | 783      | 281127   | Pinion Gear                   | 802      | 695267   | End Cap              |
| 544      | 690786   | Starter Armature        | 783A     | 691269   | Pinion Gear                   | 803      | 695266   | Starter Housing      |
| 545      | 492919   | Washer Set              |          |          |                               | 853      | 695268   | Adapter-Wire         |
|          |          |                         |          |          |                               | 937      | 691325   | Starter Spline       |

★ Included in Engine Gasket Set-Ref. No. 358.

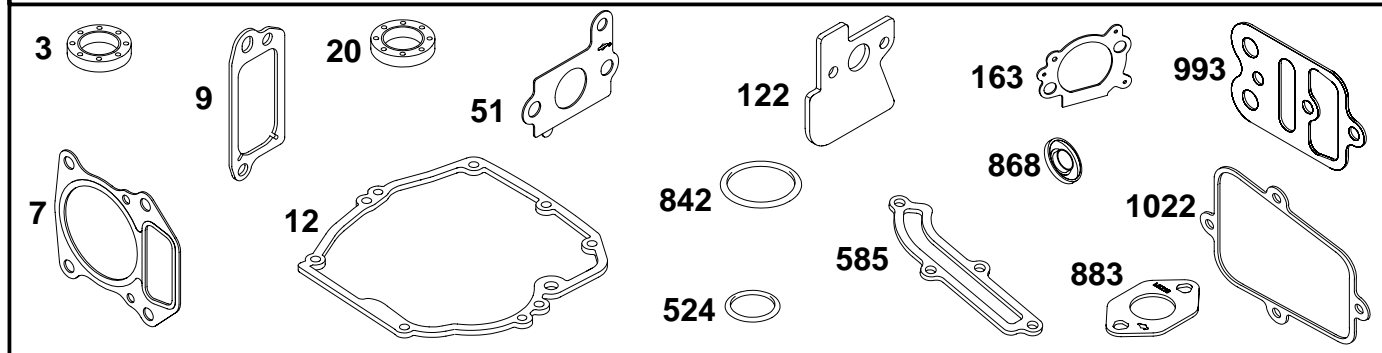
△ Included in Valve Gasket Set-Ref. No. 1095.

● Included in Carburetor Overhaul Kit-Ref. No. 121.

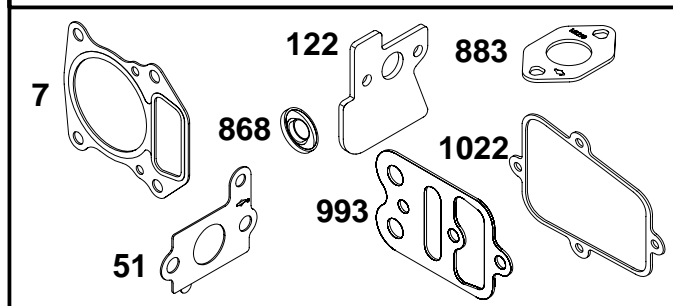
◆ Included in Carburetor Gasket Set-Ref. No. 977.

# 11A600 to 11A699

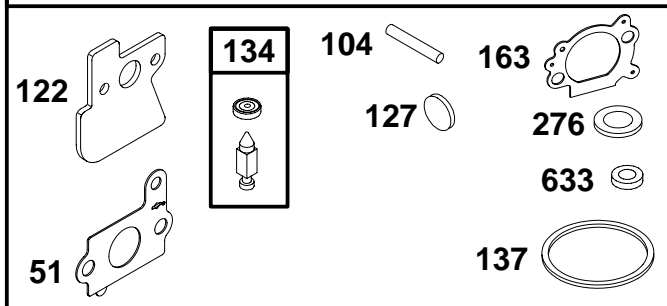
## 358 ENGINE GASKET SET



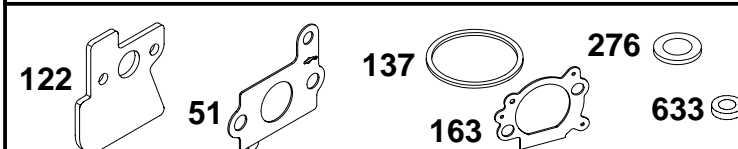
## 1095 VALVE GASKET SET



## 121 CARBURETOR OVERHAUL KIT



## 977 CARBURETOR GASKET SET



| REF. NO. | PART NO.  | DESCRIPTION             | REF. NO. | PART NO.  | DESCRIPTION                     | REF. NO. | PART NO. | DESCRIPTION                                  |
|----------|-----------|-------------------------|----------|-----------|---------------------------------|----------|----------|--|
| 3        | ★299819   | Seal—Oil (Magneto Side) | 134      | ●398188   | Kit—Needle/Seat (Includes Seat) | 842      | ★280393  | Seal—O Ring (Tube & Dipstick/Cap Combo Only) |
| 7        | ★Δ695166  | Gasket—Cylinder Head    | 137      | ◆◆693981  | Gasket—Float Bowl               | 868      | ★Δ498592 | Seal—Valve                                   |
| 9        | ★272481   | Gasket—Breather         | 163      | ★◆◆692667 | Gasket—Air Cleaner              | 883      | ★Δ273348 | Gasket—Exhaust                               |
| 12       | ★272198   | Gasket—Crankcase        | 276      | ◆◆271716  | Washer—Sealing                  | 977      | 692704   | Gasket Set—Carburetor (Throttle Shaft)       |
| 20       | ★399781   | Seal—Oil (PTO Side)     | 358      | 694090    | Gasket Set—Engine               | 993      | ★Δ694088 | Gasket—Cylinder Head Plate                   |
| 51       | ★◆◆692668 | Gasket—Intake           | 524      | ★280966   | Seal—Dipstick/Tube              | 1022     | ★Δ691890 | Gasket—Rocker Cover                          |
| 104      | ●691242   | Pin—Float Hinge         | 585      | ★272238   | Gasket—Breather Passage         | 1095     | 694091   | Gasket Set—Valve                             |
| 121      | 692703    | Kit—Carburetor Overhaul | 633      | ◆◆691321  | Seal—Choke/Throttle Shaft       |          |          |  |
| 122      | ★◆◆692799 | Spacer—Carburetor       |          |           |                                 |          |          |  |
| 127      | ●694468   | Plug—Welch              |          |           |                                 |          |          |  |

★ Included in Engine Gasket Set—Ref. No. 358.

Δ Included in Valve Gasket Set—Ref. No. 1095.

● Included in Carburetor Overhaul Kit—Ref. No. 121.

◆ Included in Carburetor Gasket Set—Ref. No. 977.